

PRODUCT INFORMATION PACKET

Model No: LM80256

Catalog No: LM80256

Fire Pump Motor, 75 HP, 3 Ph, 60 Hz, 200/400 V, 3600 RPM, 364TS Frame, DP

Regal and are trademarks of Regal Rexnord Corporation or one of its affiliated companies.
©2022 Regal Rexnord Corporation, All Rights Reserved. MC017097E



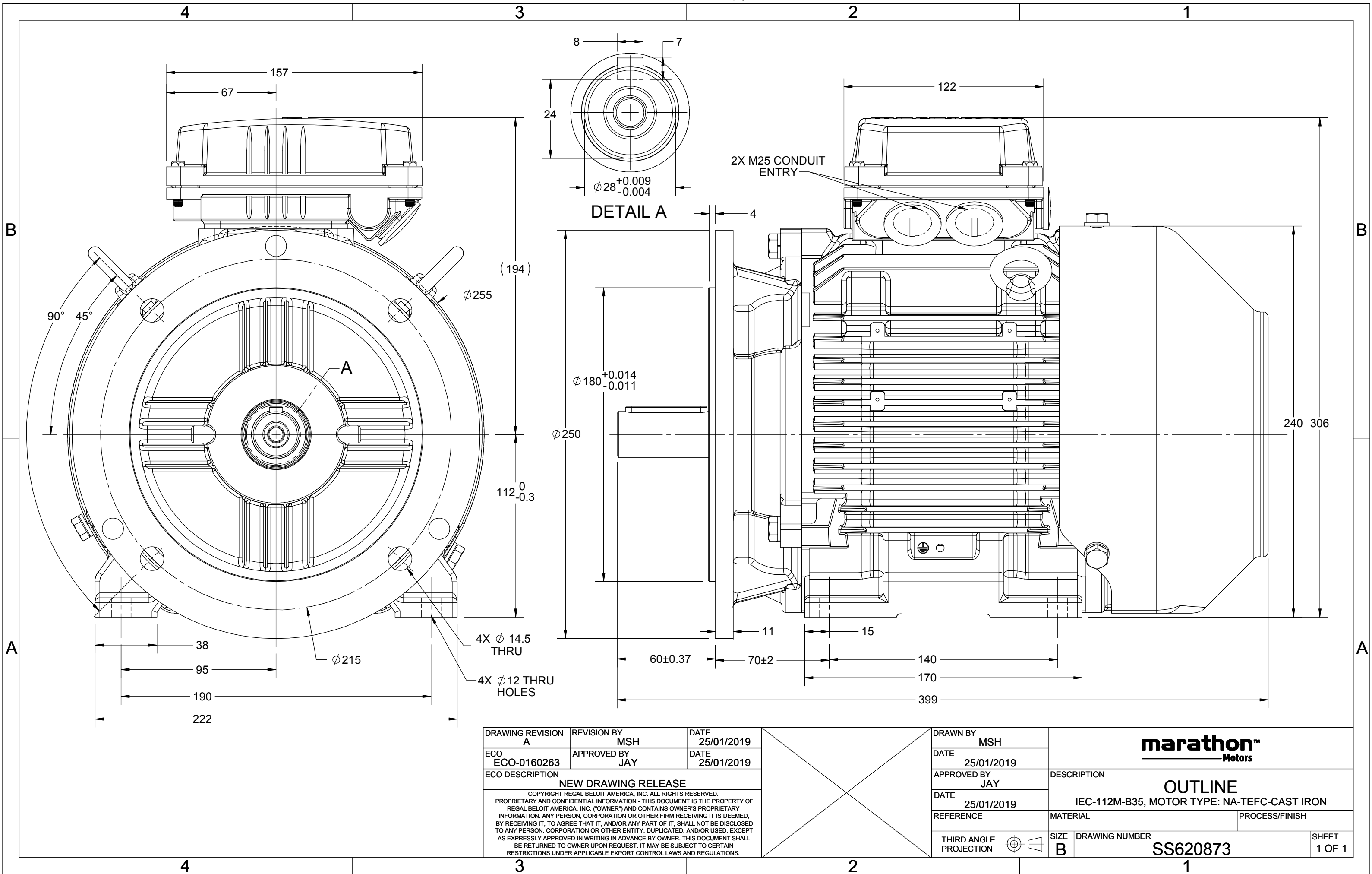
Nameplate Specifications

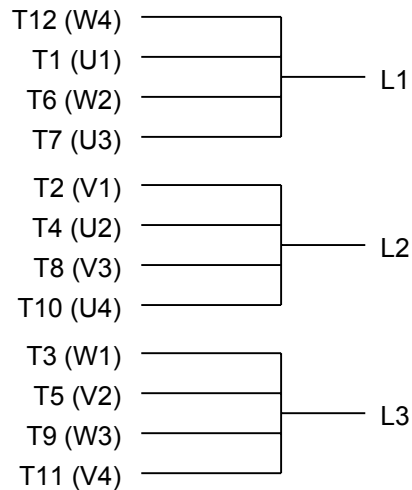
| | | | |
|------------------------|---------------|----------------------------|------------|
| Output HP | 75 Hp | Output KW | 56.0 kW |
| Frequency | 60 Hz | Voltage | 200/400 V |
| Current | 198.0/98.0 A | Speed | 3568 rpm |
| Service Factor | 1.15 | Phase | 3 |
| Efficiency | 93 % | Power Factor | 88 |
| Duty | Continuous | Insulation Class | F |
| Design Code | B | KVA Code | F |
| Frame | 364TS | Enclosure | Drip Proof |
| Thermal Protection | No Protection | Ambient Temperature | 50 °C |
| Drive End Bearing Size | 6312 | Opp Drive End Bearing Size | 6312 |
| UL | No | CSA | Y |
| CE | Y | IP Code | 23 |
| Number of Speeds | 1 | | |

Technical Specifications

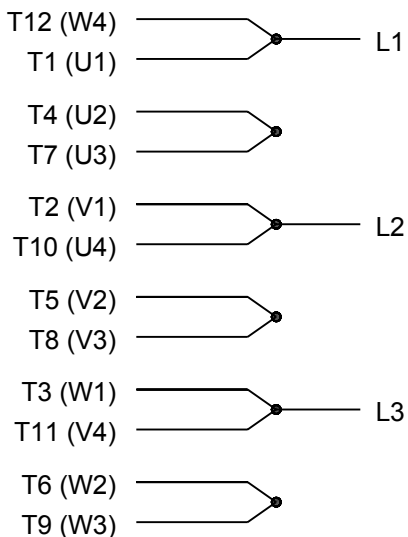
| | | | |
|-----------------------|-----------------------------|-----------------------|--|
| Electrical Type | Squirrel Cage Induction Run | Starting Method | Part Wdg Start Low Volt Only & Wye Start Delta Run |
| Poles | 2 | Rotation | Reversible |
| Resistance Main | .116 Ohms | Mounting | Rigid Base |
| Motor Orientation | Horizontal | Drive End Bearing | Ball |
| Opp Drive End Bearing | Ball | Frame Material | Cast Iron |
| Shaft Type | TS | Overall Length | 29.57 in |
| Frame Length | 17.32 in | Shaft Diameter | 1.875 in |
| Shaft Extension | 3.75 in | Assembly/Box Mounting | F1/F2 CAPABLE |
| Outline Drawing | SS620873 | Connection Drawing | EE7308AA |

This is an uncontrolled document once printed or downloaded and is subject to change without notice. Date Created:09/16/2022

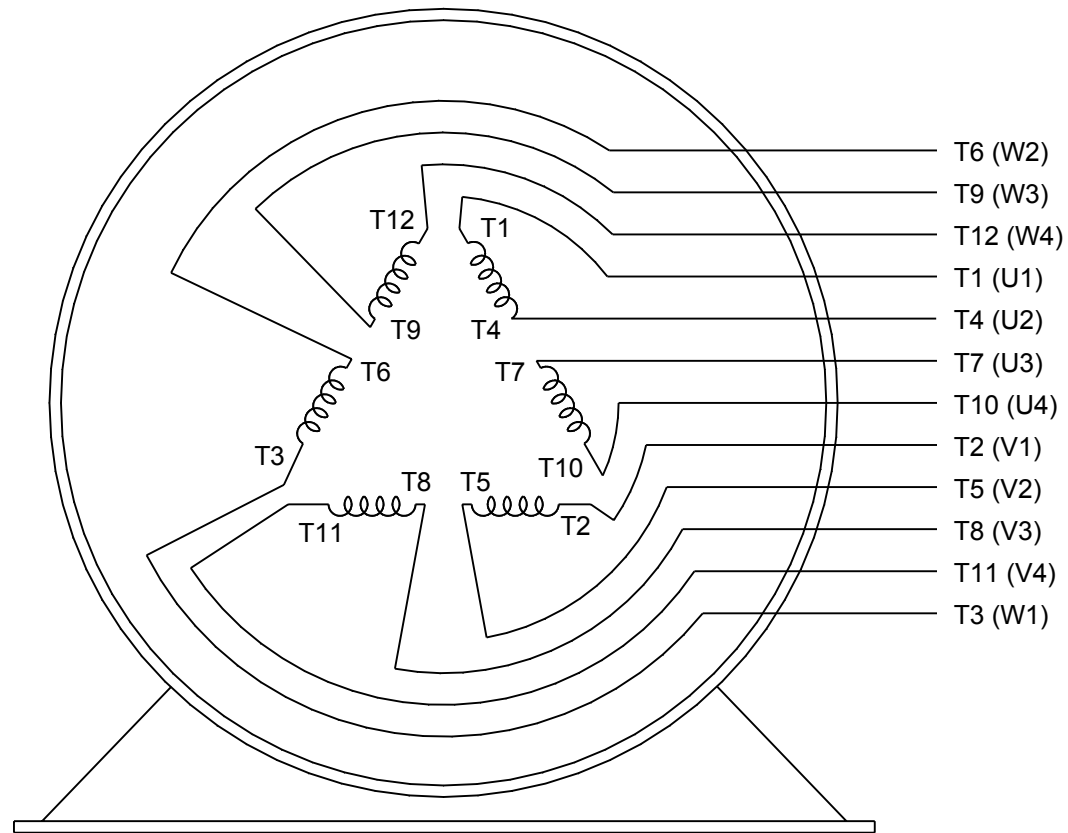




LOW VOLTAGE



HIGH VOLTAGE



VIEW OF TERMINAL END

| | | |
|---|-----------------------|--------------------|
| DRAWING REVISION K | REVISION BY AJW | DATE 07-17-2015 |
| ECO ECO-0081632 | APPROVED BY T. VUE | DATE 07-17-2015 |
| ECO DESCRIPTION REV'D IEC MARKINGS PER IEC 60034-8 | | |
| <small>COPYRIGHT REGAL BELOIT AMERICA, INC. ALL RIGHTS RESERVED. PROPRIETARY AND CONFIDENTIAL INFORMATION - THIS DOCUMENT IS THE PROPERTY OF REGAL BELOIT AMERICA, INC. ("OWNER") AND CONTAINS OWNER'S PROPRIETARY INFORMATION. ANY PERSON, CORPORATION OR OTHER FIRM RECEIVING IT IS DEEMED, BY RECEIVING IT, TO AGREE THAT IT, AND/OR ANY PART OF IT, SHALL NOT BE DISCLOSED TO ANY PERSON, CORPORATION OR OTHER ENTITY, DUPLICATED, AND/OR USED, EXCEPT AS EXPRESSLY APPROVED IN WRITING IN ADVANCE BY OWNER. THIS DOCUMENT SHALL BE RETURNED TO OWNER UPON REQUEST. IT MAY BE SUBJECT TO CERTAIN RESTRICTIONS UNDER APPLICABLE EXPORT CONTROL LAWS AND REGULATIONS.</small> | | |

| | |
|---------------------------|--------------------|
| DRAWN BY LZ | DATE 01-12-1994 |
| APPROVED BY GK | DATE 01-14-1994 |
| REFERENCE | |
| THIRD ANGLE PROJECTION | |

| | | |
|--|----------------------------|-----------------|
| Regal Beloit America, Inc. | | |
| DESCRIPTION CONN DIAGRAM-EXTERNAL 3Ø-2/1 DELTA-12 LEADS | | |
| MATERIAL | PROCESS/FINISH | |
| SIZE A | DRAWING NUMBER EE7308AA | SHEET 1 OF 1 |

EC Declaration of Conformity

The undersigned representing
the manufacturer:

Regal Beloit America
100 East Randolph St.
Wausau, WI 54401

and the authorized representative
established within the Community:

Marathon Electric UK
6F Thistleton Road Ind. Estate
Market Overton
Oakham, Rutland LE15 7PP UK

are committed to providing customers with products that comply with applicable regulations and international protocols to which they are subject, including the requirements of the European Parliament Directive on the Harmonization of the laws relating to electrical equipment designed for use within certain voltage limits (2014/35/EU).

Regal Beloit America declares that the following product(s), to which this declaration relates, are in conformity with the relevant sections of the EC standards listed below.

This statement supersedes any statements previously issued pertaining to the product(s) listed below and is subject to change without notice.

Model No : LM80256

(Model No. may contain prefix and/or suffix characters)

Catalog No : LM80256

Rework No : N/A

Directives :

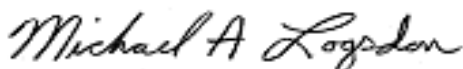
Low Voltage Directive 2014/35/EU

Harmonized Standards Used :

EN 60034-1: 2010 (IEC 60034-1: 2010)

EN 60034-5: 2001/A1:2007 (IEC 60034-5: 2000/A1:2006)

Authorized Representative:



Michael A. Logsdon
Vice President, Technology

Authorized Representative in the Community:



Julian Clark
Marketing Engineer

Created on 09/01/2022

CE 22