

PRODUCT INFORMATION PACKET



Model No: LM80179

Catalog No: LM80179

CCD2P450TS64PYAP5..450HP..3572RPM.449TS.ODP.460//380VAC.3PH.60/50HZ.CONT.....

Regal and Leeson are trademarks of Regal Rexnord Corporation or one of its affiliated companies.

©2023 Regal Rexnord Corporation, All Rights Reserved. MC017097E





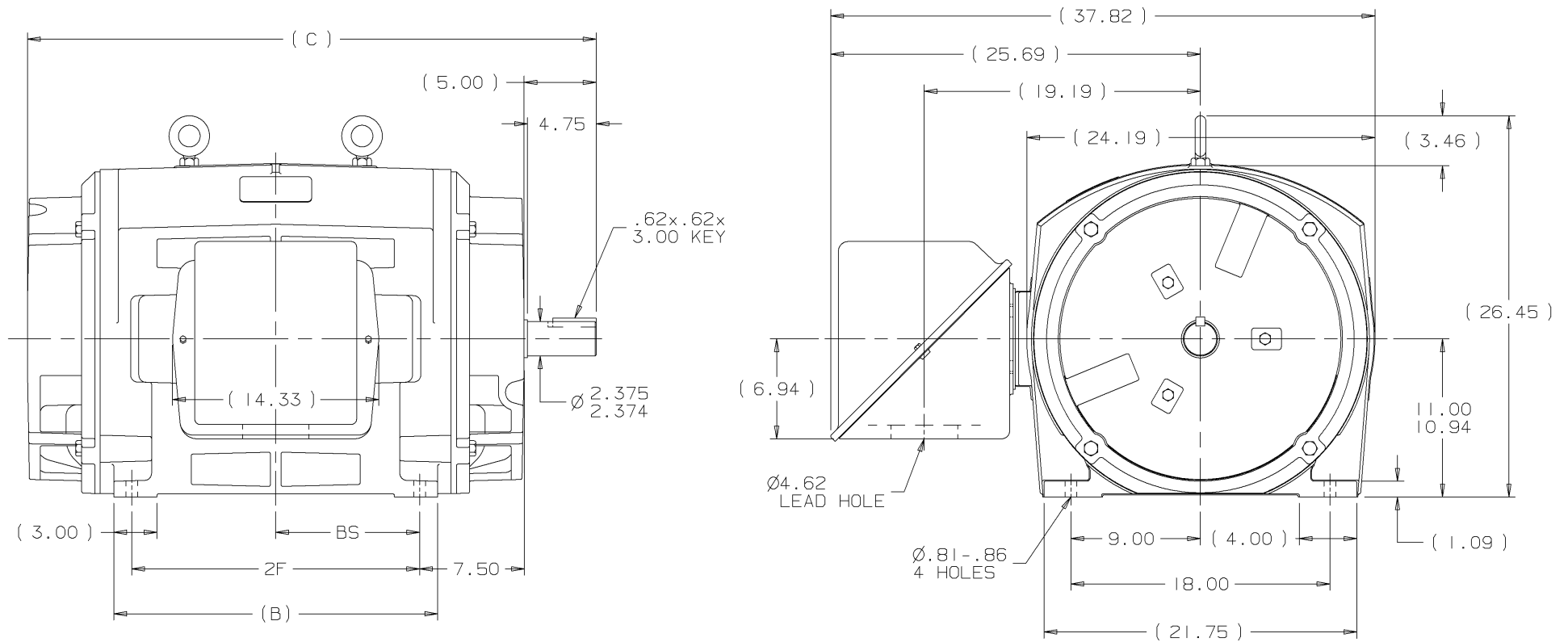
Nameplate Specifications

Phase	3	Output HP	450 & 400 Hp
Output KW	340.0 & 300.0 kW	Voltage	460 & 380 V
Speed	3572 & 2970 rpm	Service Factor	1.15 & 1.15
Frame	449TS	Enclosure	Drip Proof
Thermal Protection	No Protection	Efficiency	95.8 & 95 %
Ambient Temperature	40 °C	Frequency	60 & 50 Hz
Current	495 & 530 A	Power Factor	89.5
Duty	Continuous	Insulation Class	B
Design Code	B	KVA Code	F
Drive End Bearing Size	6314	Opp Drive End Bearing Size	6314
UL	Listed	CSA	Y
CE	Y	IP Code	12
Number of Speeds	1		

Technical Specifications

Electrical Type	Squirrel Cage Induction Run	Starting Method	Part Wdg Start & Wye Start Delta Run
Poles	2	Rotation	Reversible
Resistance Main	.0083 Ohms	Mounting	Rigid Base
Motor Orientation	Horizontal	Drive End Bearing	Ball
Opp Drive End Bearing	Ball	Frame Material	Cast Iron
Shaft Type	TS	Assembly/Box Mounting	F1/F2 CAPABLE
Outline Drawing	B-SS514570LN-2938	Connection Drawing	A-EE7300BH-LN

This is an uncontrolled document once printed or downloaded and is subject to change without notice. Date Created:06/22/2023



NOTES:

1. CONDUIT BOX CAN BE ROTATED IN 90° STEPS.
2. CONDUIT BOX CAN BE MOUNTED ON OPPOSITE SIDE BY REMOVING BRACKETS AND TURNING FRAME 180°.
3. NAMEPLATE TO BE READ FROM CONDUIT BOX SIDE OF MOTOR.

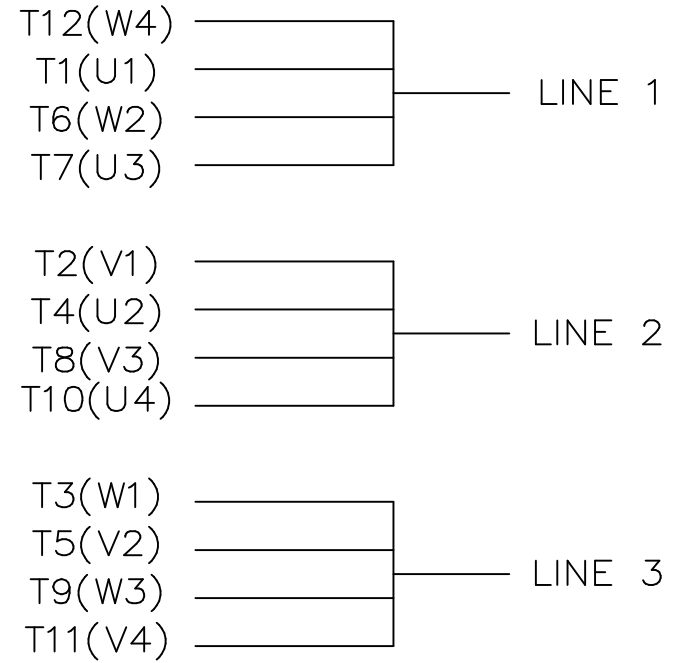
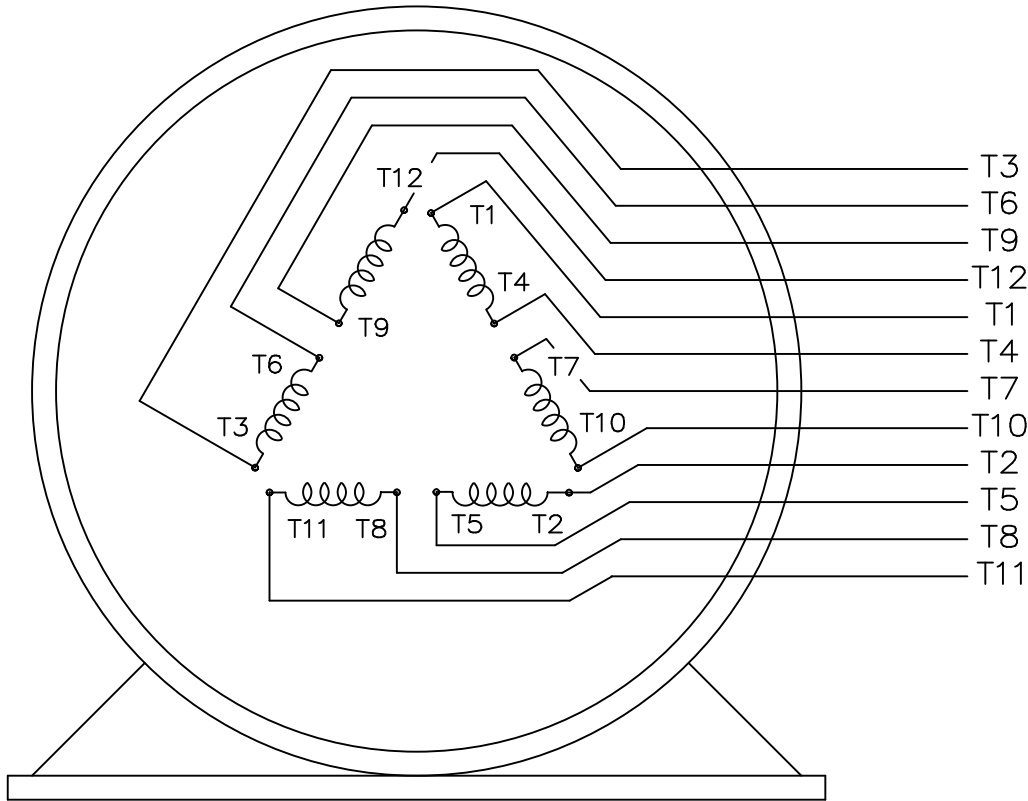
(B-SS514335)

DASH	FRAME	B	C	2F	BS	REV	DATE	CHANGE	NAME	PART NAME	OUTLINE	DRWG NO
2438	447TS	22.50	39.50	20.00	10.00	I	05-16-2001	NEW DRAWING	MU37352	KL	447/9TS FR. - DR.PR.	B-SS514570LN
2938	449TS	27.50	44.50	25.00	12.50							




UNLESS OTHERWISE SPECIFIED DIMENSIONS ARE IN INCHES TOL. ON XX±.03 XXX±.005 XXXX±.0005 ANGLES± 7'30"			
✓	MAX. SURFACE ROUGHNESS UNLESS OTHERWISE NOTED	DRAWN BY	KL
	FINISH	CHKD BY	DJK
	MATERIAL	APPD BY	JES

PURCHASED | L | DISTRIBUTION WA - LB - WP - LN - BY | CADD FILE NO. | SS514570LN



VIEW OF TERMINAL END

				TOLERANCES UNLESS SPECIFIED					DRAWN KL 04-23-2002		
				DEC.	INCHES				CHK DJK 04-24-2002		
				.X	±.1				APPD EAB 04-24-2002		
				.XX	±.01				SCALE 1=1		
2	ADDED IEC TERMINAL MARKINGS CN 41429	JJB 05/24/2000	ML	.XXX	±.005	TITLE CONNECTION DIAGRAM – EXTERNAL 12 LEAD – SINGLE VOLTAGE			REF		
1	NEW DRAWING MU41562	KL 04-12-02		.XXXX	±.0005	MAT'L.			FMF		
NO.	REVISION	BY & DATE	CHK	ANG	±1/2"	FINISH			PREV		
THIS DRAWING IN DESIGN AND DETAIL IS OUR PROPERTY AND MUST NOT BE USED EXCEPT IN CONNECTION WITH OUR WORK ALL RIGHTS OF DESIGN AND INVENTION ARE RESERVED THIS IS AN ELECTRONICALLY GENERATED DOCUMENT – DO NOT SCALE THIS PRINT			RFP		CAD FILE ee7300bh_ln			SIZE A	DRAWING NO. EE7300BH-LN	PAGE OF 2	REV. 2
			DIST WA-SB								