

PRODUCT INFORMATION PACKET



Model No: LM80177
Catalog No: LM80177
CCD2P400TS64PYAP5.....



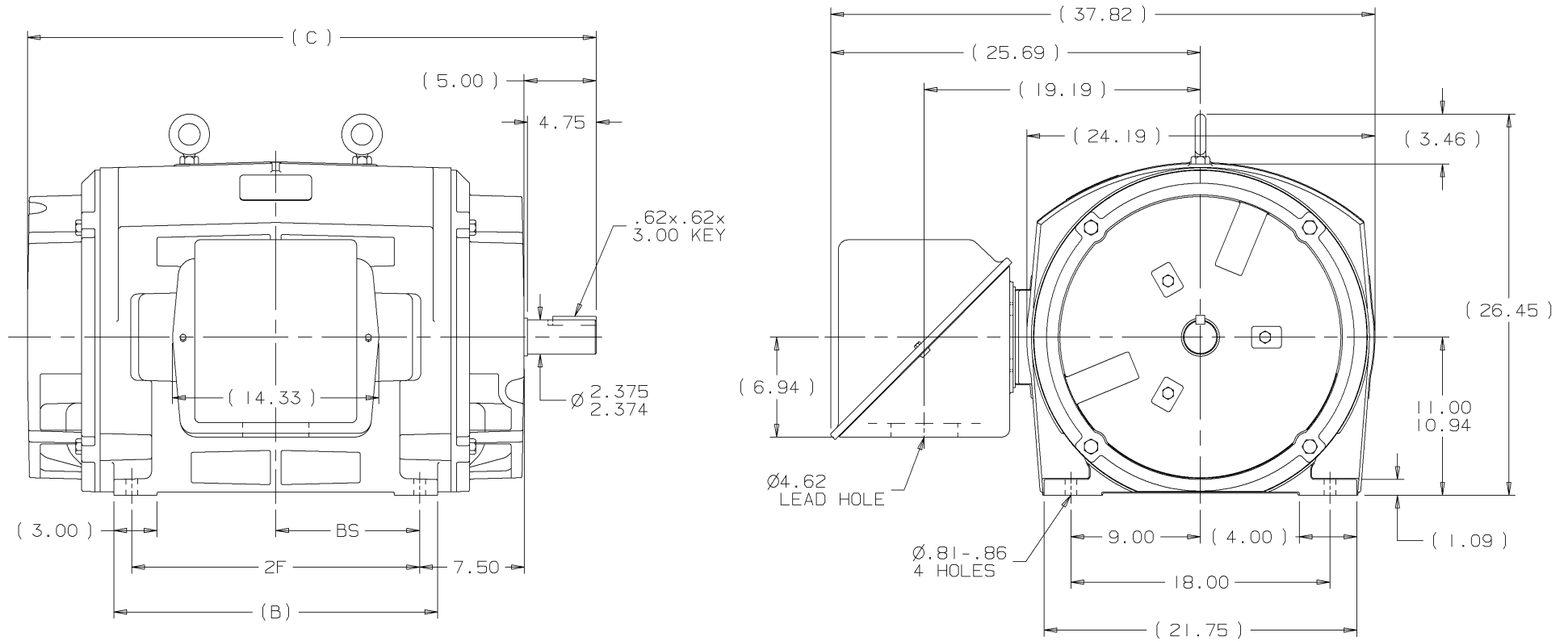
Nameplate Specifications

Phase	3	Output HP	400 & 350 Hp
Output KW	300.0 & 260.0 kW	Voltage	460 & 380 V
Speed	3568 & 2965 rpm	Service Factor	1.15 & 1.15
Frame	447TS	Enclosure	Drip Proof
Thermal Protection	No Protection	Efficiency	95.4 & 94.5 %
Ambient Temperature	40 °C	Frequency	60 & 50 Hz
Current	435 & 465 A	Power Factor	88.5
Duty	Continuous	Insulation Class	F
Design Code	B	KVA Code	F
Drive End Bearing Size	6314	Opp Drive End Bearing Size	6314
UL	No	CSA	Y
CE	Y	IP Code	12
Number of Speeds	1		

Technical Specifications

Electrical Type	Squirrel Cage Induction Run	Starting Method	Part Wdg Start & Wye Start Delta Run
Poles	2	Rotation	Reversible
Resistance Main	.0105 Ohms	Mounting	Rigid Base
Motor Orientation	Horizontal	Drive End Bearing	Ball
Opp Drive End Bearing	Ball	Frame Material	Cast Iron
Shaft Type	TS	Assembly/Box Mounting	F1/F2 CAPABLE
Outline Drawing	B-SS514570LN-2438	Connection Drawing	A-EE7300BH-LN

This is an uncontrolled document once printed or downloaded and is subject to change without notice. Date Created:06/22/2023



NOTES:

1. CONDUIT BOX CAN BE ROTATED IN 90° STEPS.
2. CONDUIT BOX CAN BE MOUNTED ON OPPOSITE SIDE BY REMOVING BRACKETS AND TURNING FRAME 180°.
3. NAMEPLATE TO BE READ FROM CONDUIT BOX SIDE OF MOTOR.

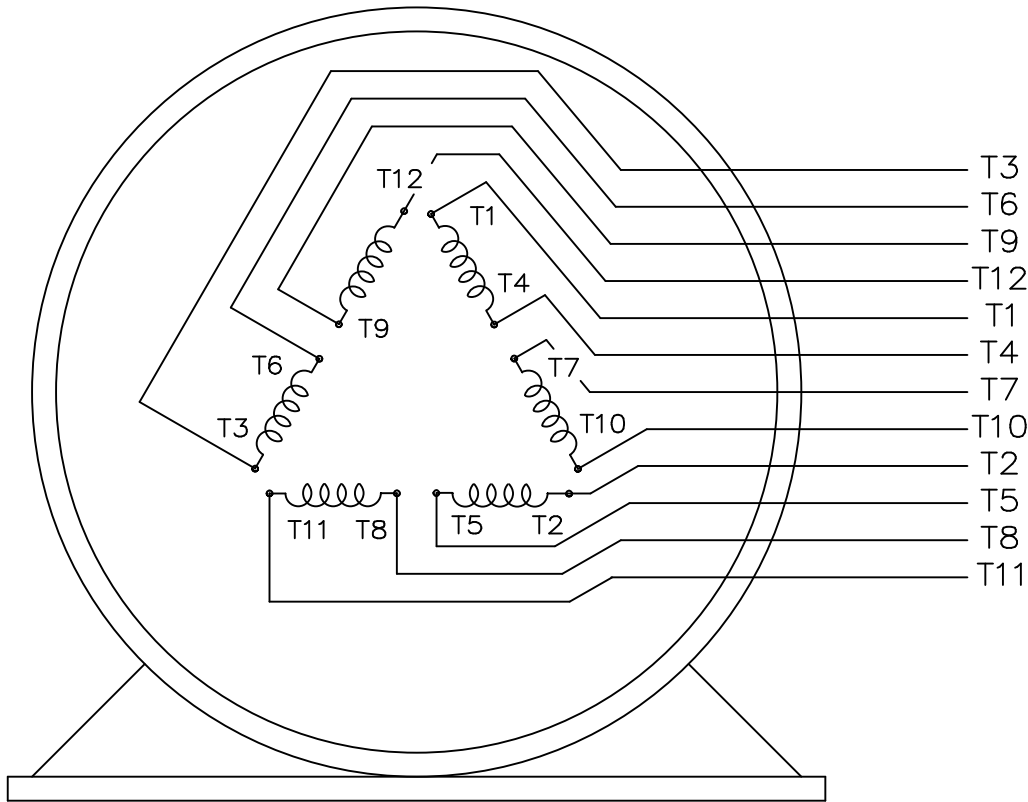
(B-SS514335)

DASH	FRAME	B	C	2F	BS	REV	DATE	CHANGE	NAME	PART NAME	OUTLINE	DRWG NO
2438	447TS	22.50	39.50	20.00	10.00	I	05-16-2001	NEW DRAWING	MU37352	KL	447/9TS FR. - DR.PR.	B-SS514570LN
2938	449TS	27.50	44.50	25.00	12.50							

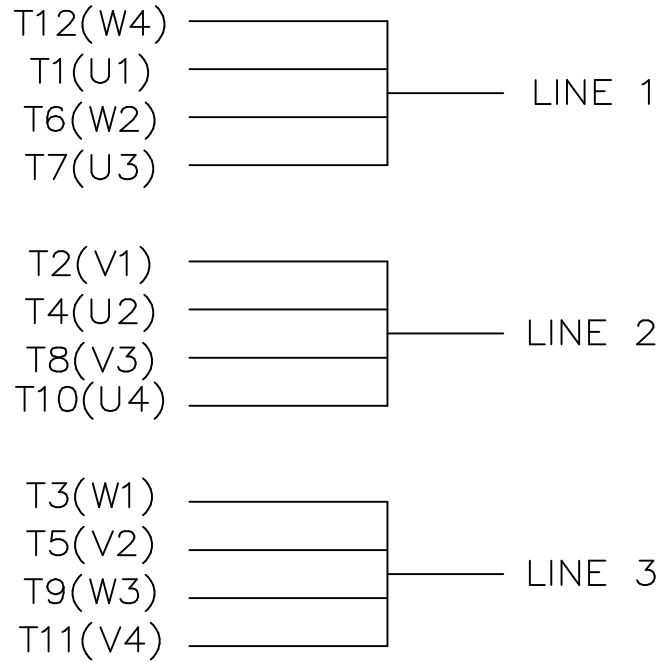



UNLESS OTHERWISE SPECIFIED DIMENSIONS ARE IN INCHES TOL. ON XX±.03 XXX±.005 XXXX±.0005 ANGLES± 7'30"			
MAX. SURFACE ROUGHNESS UNLESS OTHERWISE NOTED		DRAWN BY	KL
FINISH		CHKD BY	DJK
MATERIAL		APPD BY	JES

PURCHASED | L | DISTRIBUTION WA - LB - WP - LN - BY | CADD FILE NO. | SS514570LN



VIEW OF TERMINAL END



				TOLERANCES UNLESS SPECIFIED			DRAWN KL 04-23-2002			
				DEC.	INCHES		CHK DJK 04-24-2002			
				.X	±.1		APPD EAB 04-24-2002			
				.XX	±.01		SCALE 1=1			
2	ADDED IEC TERMINAL MARKINGS CN 41429	JJB 05/24/2000	ML	.XXX	±.005	TITLE CONNECTION DIAGRAM – EXTERNAL 12 LEAD – SINGLE VOLTAGE MAT'L. FINISH	REF			
1	NEW DRAWING MU41562	KL 04-12-02		.XXXX	±.0005		FMF			
NO.	REVISION	BY & DATE	CHK	ANG	±1/2"		PREV			
THIS DRAWING IN DESIGN AND DETAIL IS OUR PROPERTY AND MUST NOT BE USED EXCEPT IN CONNECTION WITH OUR WORK ALL RIGHTS OF DESIGN AND INVENTION ARE RESERVED THIS IS AN ELECTRONICALLY GENERATED DOCUMENT – DO NOT SCALE THIS PRINT				RFP	CAD FILE ee7300bh_ln	SIZE A	DRAWING NO. EE7300BH-LN	PAGE OF	REV. 2	
				DIST WA-SB						