

PRODUCT INFORMATION PACKET



Model No: LM80176
Catalog No: LM80176

Fire Pump Motor, 350 & 300 HP, 3 Ph, 60 & 50 Hz, 460 & 380 V, 1800 & 1500 RPM, 447T Frame, DP



Regal and Leeson are trademarks of Regal Rexnord Corporation or one of its affiliated companies.
©2023 Regal Rexnord Corporation, All Rights Reserved. MC017097E



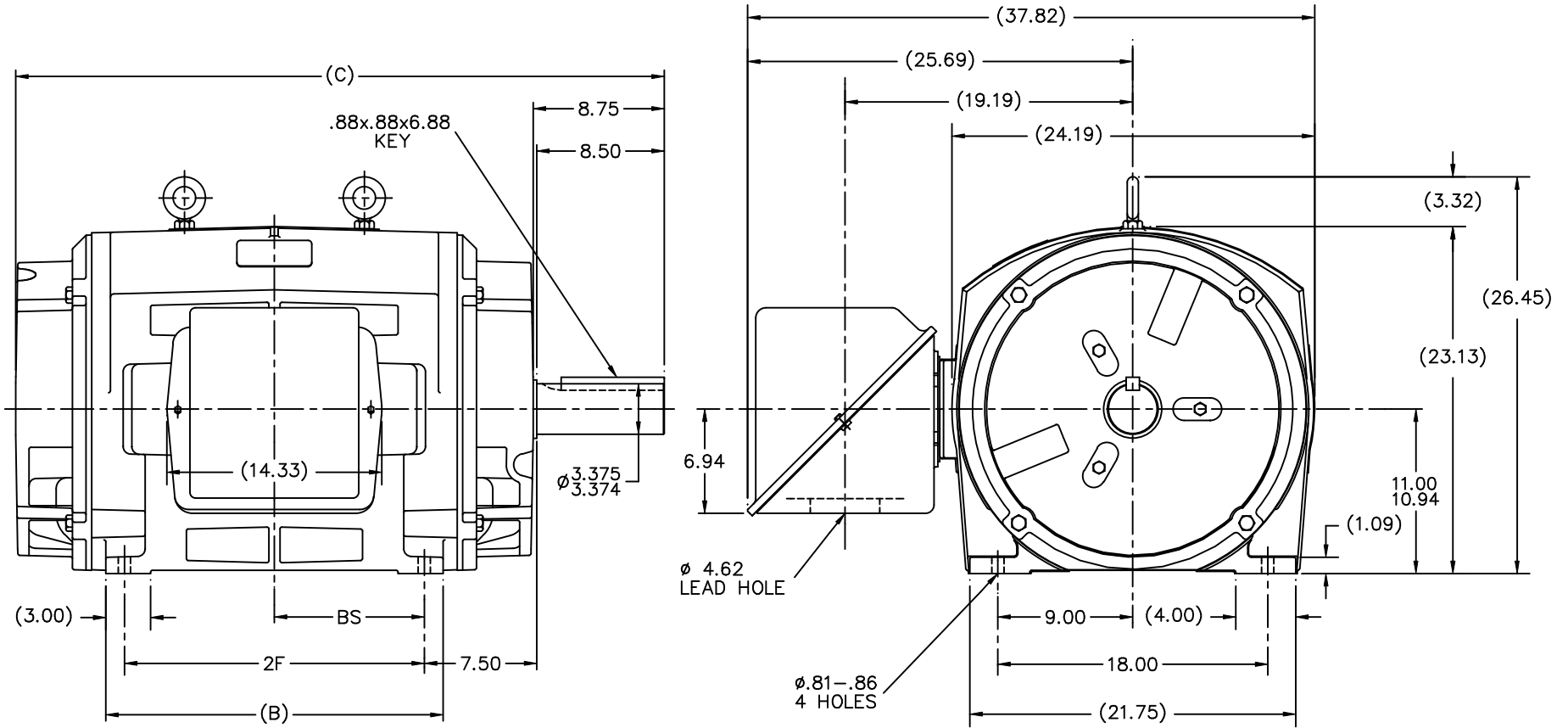


Nameplate Specifications

Phase	3	Output HP	350 & 300 Hp
Output KW	260.0 & 224.0 kW	Voltage	460 & 380 V
Speed	1780 & 1480 rpm	Service Factor	1.15 & 1.15
Frame	447T	Enclosure	Drip Proof
Thermal Protection	No Protection	Efficiency	95.4 & 94.5 %
Ambient Temperature	40 °C	Frequency	60 & 50 Hz
Current	405 & 418 A	Power Factor	86
Duty	Continuous	Insulation Class	F
Design Code	B	KVA Code	F
Drive End Bearing Size	6318	Opp Drive End Bearing Size	6314
UL	No	CSA	Y
CE	Y	IP Code	12
Number of Speeds	1		

Technical Specifications


Electrical Type	Squirrel Cage Induction Run	Starting Method	Part Wdg Start & Wye Start Delta Run
Poles	4	Rotation	Reversible
Resistance Main	.015 Ohms	Mounting	Rigid Base
Motor Orientation	Horizontal	Drive End Bearing	Ball
Opp Drive End Bearing	Ball	Frame Material	Cast Iron
Shaft Type	T	Overall Length	43.25 in
Frame Length	24.38 in	Shaft Diameter	3.375 in
Shaft Extension	8.5 in	Assembly/Box Mounting	F1/F2 CAPABLE
Connection Drawing	A-EE7300BH-LN	Outline Drawing	B-SS514258LN-2438

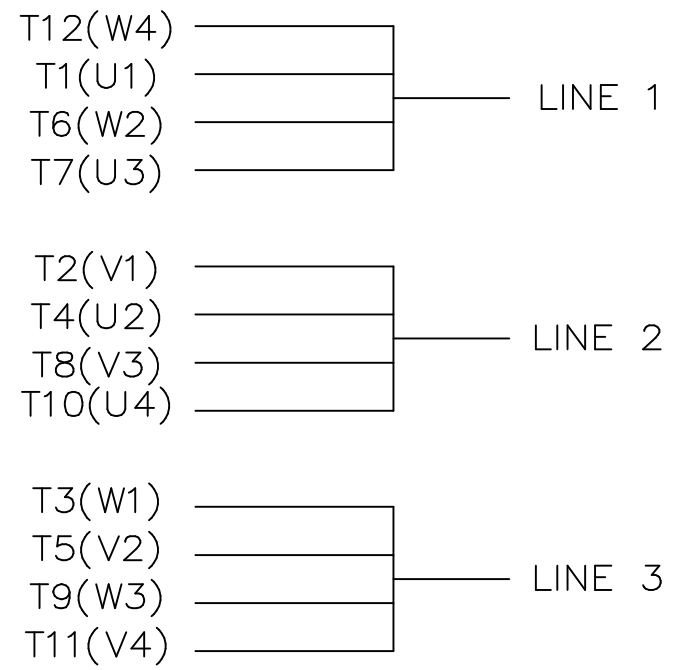
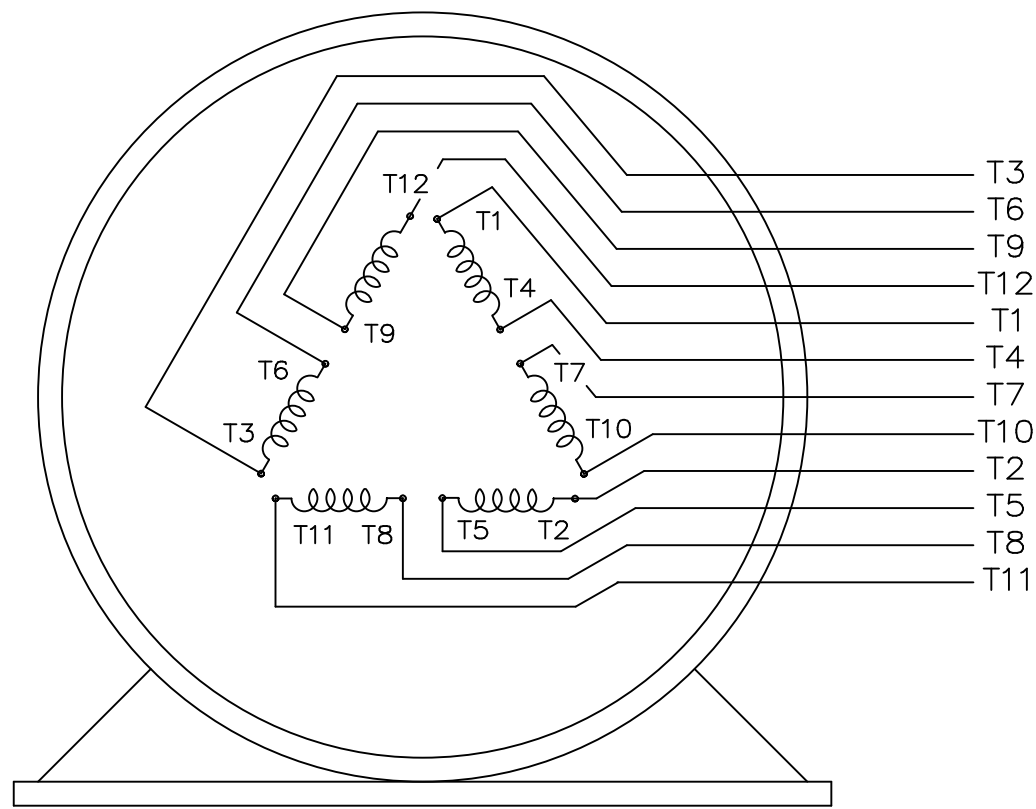


NOTES:


1. C.BOX CAN BE ROTATED IN 90° STEPS.
2. C.BOX CAN BE MOUNTED ON OPPOSITE SIDE BY REMOVING BRACKETS & TURNING FRAME 180°.
3. NAMEPLATES TO BE READ FROM CONDUIT BOX SIDE OF MOTOR.

2438	447T	43.25	---	22.50	20.00	---	---	10.00
2938	449T	48.25	---	27.50	25.00	---	---	12.50
DASH	FRAME	C	AG	B	2F	2FF	2FFF	BS

		TOLERANCES UNLESS SPECIFIED				DRAWN TAT 06-25-2004	
DEC.	INCHES	CHK	ML 06-25-2004				
.X	±.1	APPD	GK 06-25-2004	TITLE OUTLINE - DR.PR.		SCALE 1=7	
.XX	±.03	447-449T FR.		REF		FMF	
.XXX	±.005	MATL		PREV			
.XXXX	±.0005	FINISH		RFP		CAD FILE ss514258ln	
NO.	REVISION	BY & DATE	CHK	ANG	±1/2"	SIZE	DRAWING NO. PAGE OF REV.
THIS DRAWING IN DESIGN AND DETAIL IS OUR PROPERTY AND MUST NOT BE USED EXCEPT IN CONNECTION WITH OUR WORK ALL RIGHTS OF DESIGN AND INVENTION ARE RESERVED THIS IS AN ELECTRONICALLY GENERATED DOCUMENT - DO NOT SCALE THIS PRINT						B	SS514258LN
						DIST	WA



VIEW OF TERMINAL END

				TOLERANCES UNLESS SPECIFIED			DRAWN KL 04-23-2002			
				DEC.	INCHES		CHK DJK 04-24-2002			
				.X	±.1		APPD EAB 04-24-2002			
				.XX	±.01		SCALE 1=1			
2	ADDED IEC TERMINAL MARKINGS CN 41429	JJB 05/24/2004	ML	.XXX	±.005	TITLE CONNECTION DIAGRAM - EXTERNAL 12 LEAD - SINGLE VOLTAGE	REF			
1	NEW DRAWING MU41562	KL 04-12-02		.XXXX	±.0005		MAT'L.	FMF		
NO.	REVISION	BY & DATE	CHK	ANG	±1/2"	FINISH	PREV			
THIS DRAWING IN DESIGN AND DETAIL IS OUR PROPERTY AND MUST NOT BE USED EXCEPT IN CONNECTION WITH OUR WORK ALL RIGHTS OF DESIGN AND INVENTION ARE RESERVED THIS IS AN ELECTRONICALLY GENERATED DOCUMENT - DO NOT SCALE THIS PRINT				RFP	CAD FILE	ee7300bh_ln	SIZE	DRAWING NO.	PAGE OF	REV.
				DIST	WA-SB		A	EE7300BH-LN	2	2

Data Sheet

Date: 1/30/2018

LM80176



Data @ 460 V

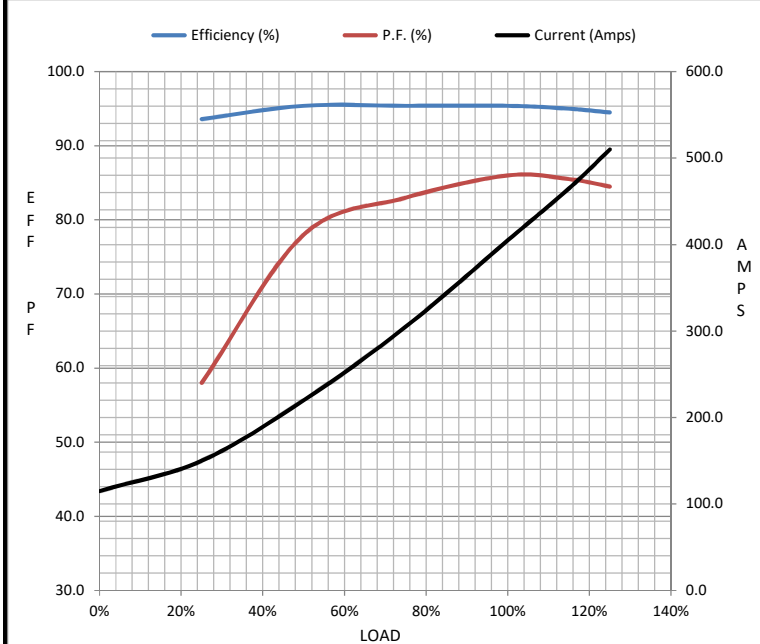
Motor Load Data

Load	0%	25%	50%	75%	100%	115%	125%	LR
Current (Amps)	115	150	220	305	405	465	510	2,100
Torque (ft-lb)	0.00	256	513	772	1,032	1,190	1,295	1,375
RPM	1800	1795	1790	1785	1780	1,778	1775	0
Efficiency (%)		93.6	95.4	95.4	95.4	95.0	94.5	
P.F. (%)	4.0	58.0	78.0	83.0	86.0	85.5	84.5	28.0

Motor Speed Data

	LR	Pull-Up	BD	Rated	Idle
Speed (RPM)	0	900	1725	1780	1800
Current (Amps)	2,100	1,850	1,550	405	115
Torque (ft-lb)	1,375	1,150	2,500	1,032	0.00

Information Block				
HP	350.0			
Sync. RPM	1800			
Frame	447			
Enclosure	DP			
Construction	TDN			
Voltage	460#380 V			
Frequency	60 Hz			
Design	B			
LR Code letter	F			
Service Factor	1.15			
Temp Rise @ FL	70 °C			
Duty	CONT			
Ambient	40 °C			
Elevation	1,000 feet			
Rotor/Shaft wk ²	53.0 Lb-Ft ²			
Ref Wdg	T447445 NONE			
Sound Pressure @ 1M	82 dBA			
VFD Rating	NONE			
Outline Dwg	B-SS514258LN-2438			
Conn. Diag	A-EE7300BH-LN			
Additional Specifications:				
0				
0				
EQUIV CKT (OHMS / PHASE)				
R1	R2	X1	X2	Xm
0.0120	0.0070	0.0960	0.0920	2.4410



Speed - Torque Curve

