

PRODUCT INFORMATION PACKET



Model No: LM80172

Catalog No: LM80172

Fire Pump Motor, 350 & 300 HP, 3 Ph, 60 & 50 Hz, 460 & 380 V, 3600 & 3000 RPM, 447TS Frame, DP



Regal and Leeson are trademarks of Regal Rexnord Corporation or one of its affiliated companies.

©2023 Regal Rexnord Corporation, All Rights Reserved. MC017097E



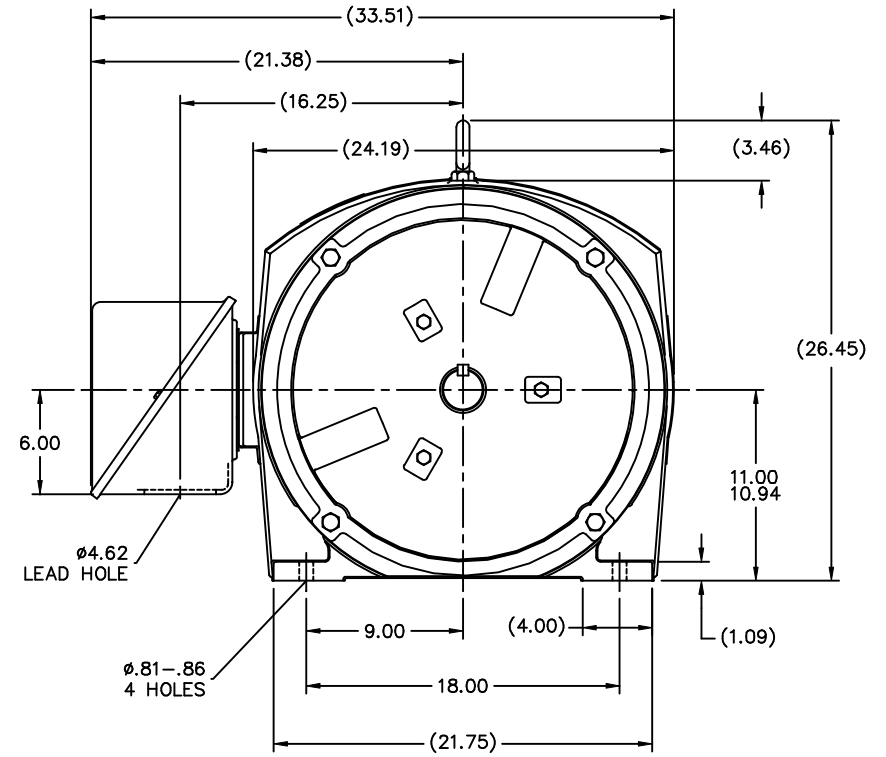
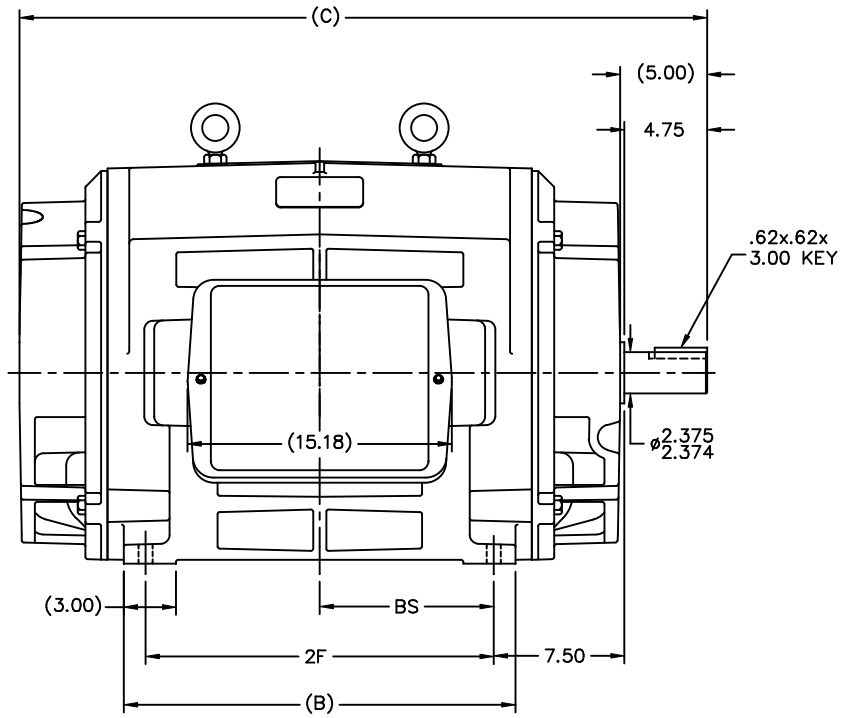


Nameplate Specifications

Phase	3	Output HP	350 & 300 Hp
Output KW	260.0 & 224.0 kW	Voltage	460 & 380 V
Speed	3565 & 2965 rpm	Service Factor	1.15 & 1.15
Frame	447TS	Enclosure	Drip Proof
Thermal Protection	No Protection	Efficiency	95 & 94.5 %
Ambient Temperature	40 °C	Frequency	60 & 50 Hz
Current	385 & 402 A	Power Factor	88.5
Duty	Continuous	Insulation Class	F
Design Code	B	KVA Code	F
Drive End Bearing Size	6314	Opp Drive End Bearing Size	6314
UL	No	CSA	Y
CE	Y	IP Code	12
Number of Speeds	1		

Technical Specifications

Electrical Type	Squirrel Cage Induction Run	Starting Method	Part Wdg Start & Wye Start Delta Run
Poles	2	Rotation	Reversible
Resistance Main	.0145 Ohms	Mounting	Rigid Base
Motor Orientation	Horizontal	Drive End Bearing	Ball
Opp Drive End Bearing	Ball	Frame Material	Cast Iron
Shaft Type	TS	Overall Length	39.50 in
Frame Length	24.38 in	Shaft Diameter	2.375 in
Shaft Extension	4.75 in	Assembly/Box Mounting	F1/F2 CAPABLE
Outline Drawing	B-SS514335LN-2438	Connection Drawing	A-EE7300BH-LN



NOTES:

1. CONDUIT BOX CAN BE ROTATED IN 90° STEPS.
2. CONDUIT BOX CAN BE MOUNTED ON OPPOSITE SIDE BY REMOVING BRACKETS AND TURNING FRAME 180°.
3. NAMEPLATES TO BE READ FROM CONDUIT BOX SIDE OF MOTOR

(B-SS514570)

						TOLERANCES UNLESS SPECIFIED		Lincoln ROTARY	DRAWN DRS 02-10-2003			
						DEC.	INCHES		CHK	ML	02-10-2003	
						.X	±.1	TITLE OUTLINE - STD. 447/9TS FR. - DR.PR.	APPD GK 02-10-2003			
						.XX	±.03		SCALE 9-64			
						.XXX	±.005	REF				
						ML	±.0005	FMF				
						CHK	ANG ±7°30"	PREV				
						RFP	CAD FILE SS514335LN	SIZE		DRAWING NO.	PAGE OF	REV.
						DIST	WA	B		SS514335LN	2	

DASH	FRAME	B	C	2F	BS
2438	447TS	22.50	39.50	20.00	10.00
2938	449TS	27.50	44.50	25.00	12.50

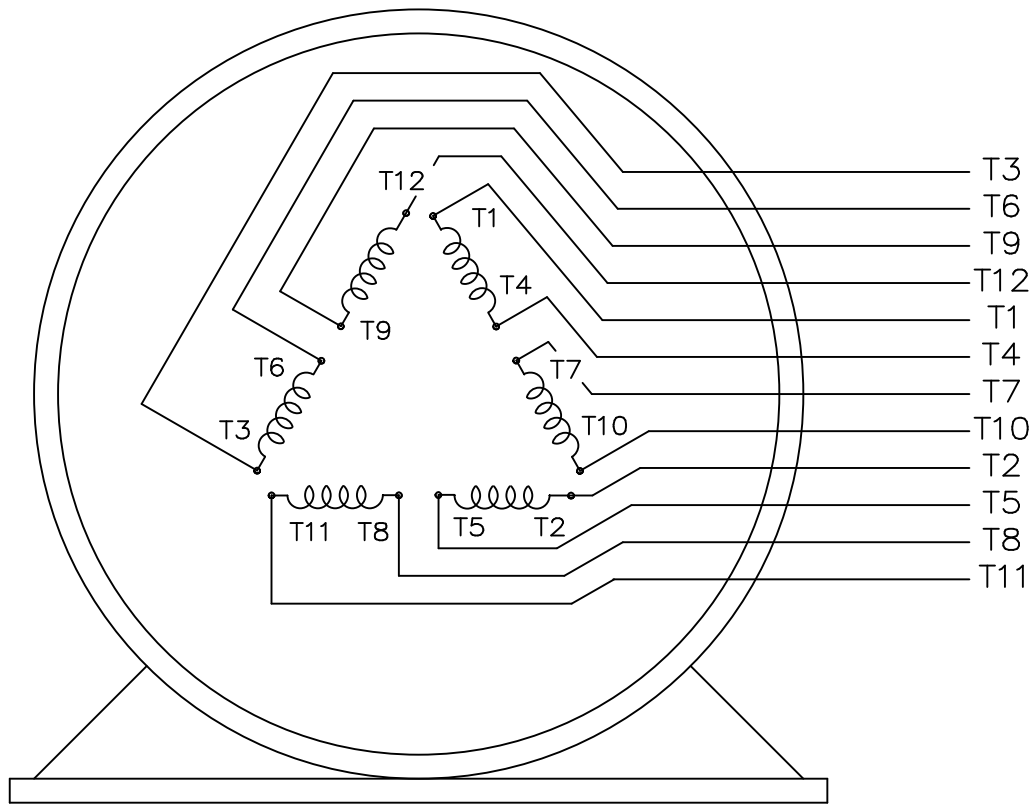
NO.	REVISION	BY & DATE
2	SHAFT TOL. WAS 2.376/2.375	KL 05-23-2005
1	NEW DRAWING	DRS 02-10-2003

THIS DRAWING IN DESIGN AND DETAIL IS OUR PROPERTY AND MUST NOT BE USED EXCEPT IN CONNECTION WITH OUR WORK ALL RIGHTS OF DESIGN AND INVENTION ARE RESERVED THIS IS AN ELECTRONICALLY GENERATED DOCUMENT - DO NOT SCALE THIS PRINT

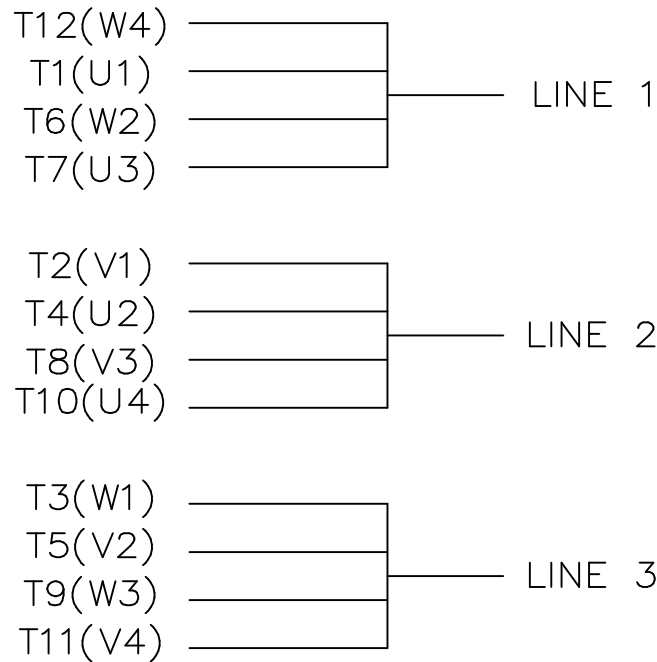
```
ERROR: undefined  
OFFENDING COMMAND: ex
```


```
STACK:
```

```
{--begin-- Pscript_Win_Data --begin-- }  
-dictionary-
```



VIEW OF TERMINAL END



				TOLERANCES UNLESS SPECIFIED			DRAWN KL 04-23-2002			
				DEC.	INCHES		CHK DJK 04-24-2002			
				.X	±.1		APPD EAB 04-24-2002			
				.XX	±.01		SCALE 1=1			
2	ADDED IEC TERMINAL MARKINGS CN 41429	JJB 05/24/2004	ML	.XXX	±.005	TITLE CONNECTION DIAGRAM – EXTERNAL 12 LEAD – SINGLE VOLTAGE	REF			
1	NEW DRAWING MU41562	KL 04-12-02		.XXXX	±.0005		MAT'L.	FMF		
NO.	REVISION	BY & DATE	CHK	ANG	±1/2"	FINISH	PREV			
THIS DRAWING IN DESIGN AND DETAIL IS OUR PROPERTY AND MUST NOT BE USED EXCEPT IN CONNECTION WITH OUR WORK ALL RIGHTS OF DESIGN AND INVENTION ARE RESERVED THIS IS AN ELECTRONICALLY GENERATED DOCUMENT – DO NOT SCALE THIS PRINT			RFP		CAD FILE ee7300bh_ln		SIZE A	DRAWING NO. EE7300BH-LN	PAGE OF 2	REV. 2
			DIST WA-SB							



**2100 WASHINGTON ST.
GRAFTON, WI
PH. 262-277-8810**

CERTIFICATION DATA SHEET

CONN. DIAGRAM: A-EE7300BH-LN

CATALOG #: LM80172

OUTLINE: B-SS514335LN-2438

WINDING #: T447223 1

MOUNTING: F1/F2 CAPABLE

TYPICAL MOTOR PERFORMANCE DATA

HP	kW	SYNC. RPM	F.L. RPM	FRAME	ENCLOSURE	KVA CODE	DESIGN
350&300	260&224	3600	3565&2965	447TS	DP	F	B

PH	Hz	VOLTS	AMPS	START TYPE	DUTY	INSL	S.F.	AMB°C
3	60/50	460&380	385&402	PWS & YDRUN	CONTINUOUS	F1	1.15/1.15	40

FULL LOAD EFF:	95&94.5	3/4 LOAD EFF:	95	1/2 LOAD EFF:	94.5	GTD. EFF		ELEC. TYPE
FULL LOAD PF:	88.5&89.5	3/4 LOAD PF:	87.5	1/2 LOAD PF:	82.5	94.1		SQ CAGE IND RUN

F.L. TORQUE	LOCKED ROTOR AMPS	L.R. TORQUE	B.D. TORQUE	F.L. RISE°C
516 LB-FT	2175	525 LB-FT 100 %	1250 LB-FT 242 %	70

SOUND PRESSURE @ 3 FT.	SOUND POWER	ROTOR WK^2	MAX. WK^2	SAFE STALL TIME	STARTS / HOUR	APPROX. MOTOR WGT
85 dBA	95 dBA	32 LB-FT^2	150 LB-FT^2	10 SEC.	1	2000 LBS.

***** SUPPLEMENTAL INFORMATION *****

DE BRACKET TYPE	ODE BRACKET TYPE	MOUNT TYPE	ORIENTATION	SEVERE DUTY	HAZARDOUS LOCATION	DRIP COVER	SCREENS	PAINT
STANDARD	STANDARD	RIGID	HORIZONTAL	FALSE	NONE	FALSE	NONE	RED (ENAMEL)

BEARINGS		GREASE	SHAFT TYPE	SPECIAL DE	SPECIAL ODE	SHAFT MATERIAL	FRAME MATERIAL
DE	ODE						
BALL	BALL						
6314	6314	POLYREX EM	TS	NONE	NONE	1045 HOT ROLLED (C-204)	CAST IRON

THERMO-PROTECTORS				THERMISTORS	CONTROL	SPACE HEATERS
THERMOSTATS	PROTECTORS	WDG RTDs	BRG RTDs			
NONE	NOT	NONE	NONE	NONE	FALSE	NONE VOLTS

*

N

O

T

E

S

*

INVERTER TORQUE: NONE
INV. HP SPEED RANGE: NONE
ENCODER: NONE NONE NONE NONE NONE PPR
BRAKE: NONE NONE NONE P/N NONE NONE NONE NONE FT-LB NONE V NONE Hz

Data Sheet

Date: 1/24/2018

LM80172



Data @ 460 V

Motor Load Data

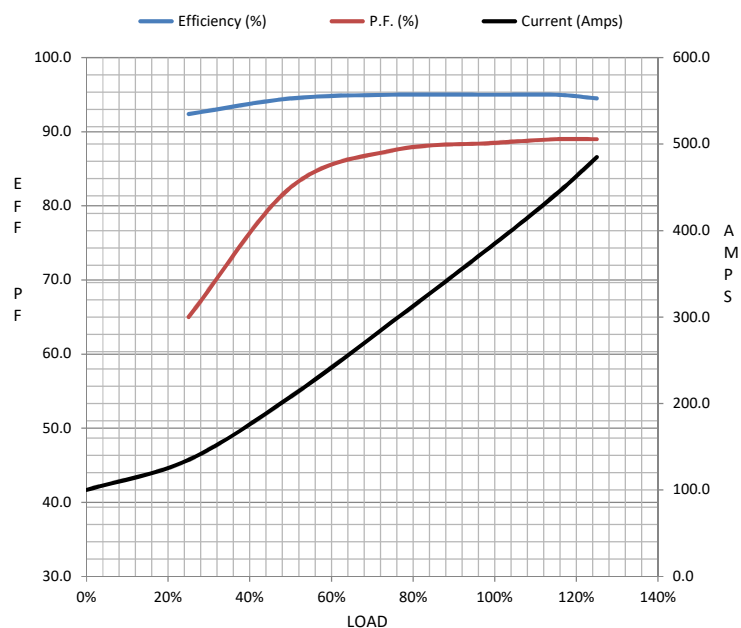
Load	0%	25%	50%	75%	100%	115%	125%	LR	
Current (Amps)	100	135	208	295	385	442	485	2,175	
Torque (ft-lb)	0.00	128	257	386	516	594	646	525	
RPM	3600	3590	3582	3575	3565	3,560	3552	0	
Efficiency (%)		92.4	94.5	95.0	95.0	95.0	94.5		
P.F. (%)	5.0	65.0	82.5	87.5	88.5	89.0	89.0	22.0	

Motor Speed Data

	LR	Pull-Up	BD	Rated	Idle
Speed (RPM)	0	1800	3400	3565	3600
Current (Amps)	2,175	2,050	1,375	385	100
Torque (ft-lb)	525	470	1,250	516	0.00

Information Block

HP	350.0			
Sync. RPM	3600			
Frame	447			
Enclosure	DP			
Construction	TDN			
Voltage	460#380 V			
Frequency	60 Hz			
Design	B			
LR Code letter	F			
Service Factor	1.15			
Temp Rise @ FL	70 °C			
Duty	CONT			
Ambient	40 °C			
Elevation	1,000 feet			
Rotor/Shaft wk²	32.0 Lb-Ft²			
Ref Wdg	T447223 NONE			
Sound Pressure @ 1M	85 dBA			
VFD Rating	NONE			
Outline Dwg	B-SS514335LN-2438			
Conn. Diag	A-EE7300BH-LN			
Additional Specifications:				
0				
0				
EQUIV CKT (OHMS / PHASE)				
R1	R2	X1	X2	Xm
0.0110	0.0070	0.0910	0.0650	2.7410



Speed - Torque Curve

