

PRODUCT INFORMATION PACKET



Model No: LM80145
Catalog No: LM80145
125 HP Fire Pump Motor, 3 phase, 1800 RPM, 200/400 V, 405T Frame, ODP
Fire Pump Motors



Regal and Leeson are trademarks of Regal Rexnord Corporation or one of its affiliated companies.
©2021 Regal Rexnord Corporation, All Rights Reserved. MC017097E





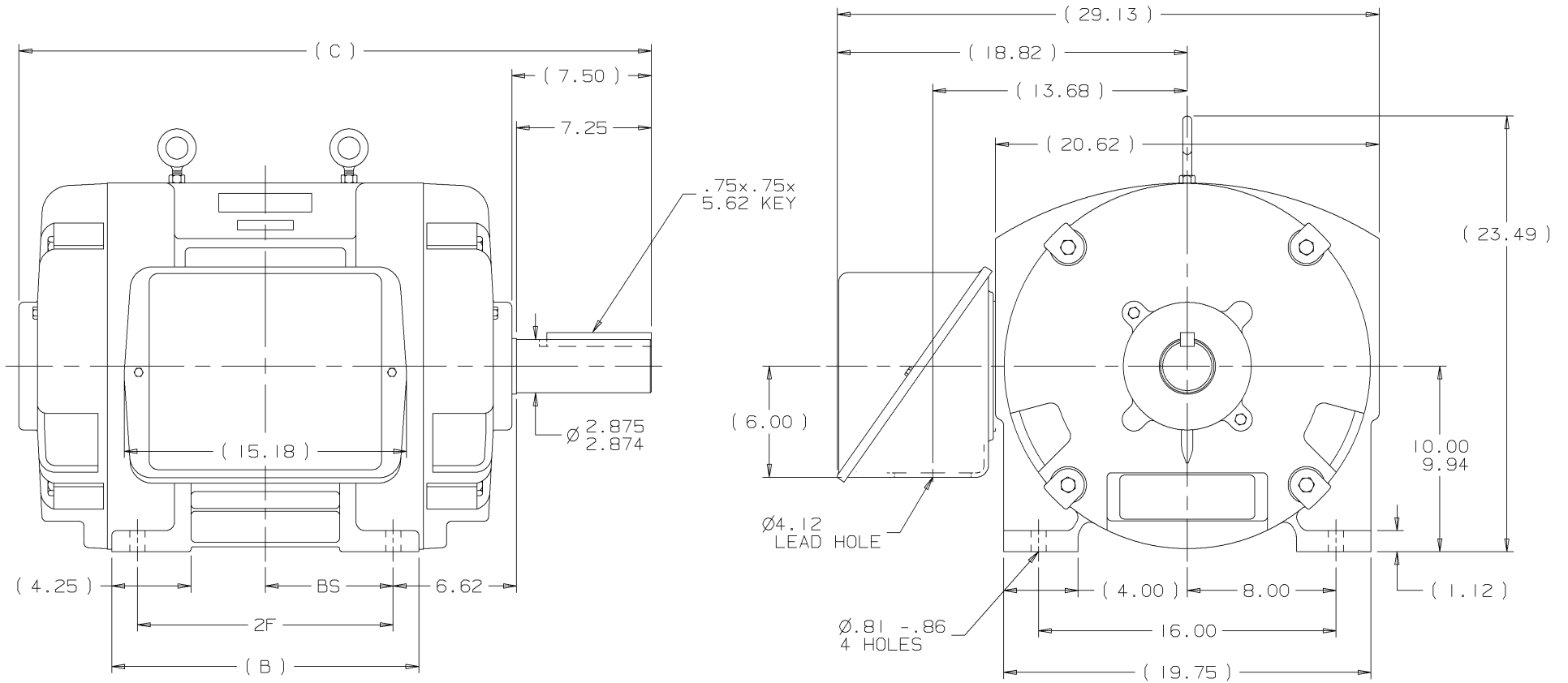
Nameplate Specifications

Output HP	125 Hp	Output KW	93.0 kW
Frequency	60 Hz	Voltage	200/400 V
Current	331.0/166.0 A	Speed	1778 rpm
Service Factor	1.15	Phase	3
Efficiency	94.5 %	Power Factor	87
Duty	Continuous	Insulation Class	F
Design Code	B	KVA Code	G
Frame	405T	Enclosure	Drip Proof
Thermal Protection	No	Ambient Temperature	40 °C
Drive End Bearing Size	6316	Opp Drive End Bearing Size	6313
UL	No	CSA	Y
CE	Y	IP Code	12
Number of Speeds	1		

Technical Specifications

Electrical Type	Squirrel Cage Induction Run	Starting Method	Wye Start Delta Run
Poles	4	Rotation	Reversible
Resistance Main	.045 Ohms	Mounting	Rigid Base
Motor Orientation	Horizontal	Drive End Bearing	Ball
Opp Drive End Bearing	Ball	Frame Material	Cast Iron
Shaft Type	T	Overall Length	34.00 in
Frame Length	17.02 in	Shaft Diameter	2.875 in
Shaft Extension	7.25 in	Assembly/Box Mounting	F1/F2 CAPABLE
Connection Drawing	A-EE7308AA-LN	Outline Drawing	B-SS509599LN-1700

This is an uncontrolled document once printed or downloaded and is subject to change without notice. Date Created:10/07/2021



NOTES:

1. CONDUIT BOX CAN BE ROTATED IN 90° STEPS.
2. CONDUIT BOX CAN BE MOUNTED ON OPPOSITE SIDE BY REMOVING BRACKETS AND TURNING FRAME 180°.
3. NAMEPLATE TO BE READ FROM CONDUIT BOX SIDE OF MOTOR.

						TOLERANCES UNLESS SPECIFIED				Lincoln MOTOR				DRAWN KL 12-20-2001	
						DEC. TOLERANCE								CHK DJK 12-20-2001	
						.X ±.1								APPD JES 12-20-2001	
						.XX ±.03				TITLE OUTLINE				SCALE	
						.XXX ±.005				400T FR. - DR.PR. - STD.				REF	
						.XXXX ±.0005				MAT'L.				FMF	
						ANG ±7'30"				FINISH				PREV	
DASH	FRAME	B	C	2F	BS	NO. REVISION				PURCHASED				SIZE	
1550	404T	15.00	32.50	12.25	6.12	1 NEW DRAWING MU40009				CAD FILE SS509599LN.GEN				DRAWING NO.	
1700	405T	16.50	34.00	13.75	6.88	THIS DRAWING IN DESIGN AND DETAIL IS OUR PROPERTY AND MUST NOT BE USED EXCEPT IN CONNECTION WITH OUR WORK. ALL RIGHTS OF DESIGN AND INVENTION ARE RESERVED. THIS IS AN ELECTRONICALLY GENERATED DOCUMENT - DO NOT SCALE THIS PRINT				DIST WA - CA - OR - TX - IL - IN - OH				B SS509599LN	

T12 _____
 T1 _____
 T6 _____ L1
 T7 _____

T2 _____
 T4 _____ L2
 T8 _____
 T10 _____

T3 _____
 T5 _____ L3
 T9 _____
 T11 _____

LOW VOLTAGE

T12 _____ L1
 T1 _____

T4 _____
 T7 _____

T2 _____ L2
 T10 _____

T5 _____
 T8 _____

T3 _____ L3
 T11 _____

T6 _____
 T9 _____

HIGH VOLTAGE



VIEW OF TERMINAL END

					✓ UNLESS OTHERWISE SPECIFIED DIMENSIONS ARE IN INCHES TOL. ON XX±.02 XXX±.005 XXXX±.0005 ANGLES± 7°30"		
2	08-09-1999	RE-ISSUE, ADDED '-' TO PART NUMBER	BLR		MAX. SURFACE ROUGHNESS UNLESS OTHERWISE NOTED		DRAWN BY TRB 07-16-1999
1	06-18-1999	NEW DRAWING	TRB		FINISH		CHKD BY ML 06-18-1999
					MATERIAL		APPD BY GK 06-18-1999
REV	DATE	CHANGE	NAME	PART NAME 3 PHASE CONNECTION DIAGRAM 2/1 DELTA - 12 LEADS			DRWG NO A- EE7308AA-LN
					PURCHASED	CADD FILE NO.	EE7308AALN

ERROR: undefined
OFFENDING COMMAND: Pscrip
STACK:



1051 CHEYENNE AVE.
GRAFTON, WI 53024
PH. 262-277-8810

DATA VOLTS: 460

CERTIFICATION DATA SHEET

CONN. DIAGRAM: A-EE7308AA-LN

CAT #: LM80145

OUTLINE: B-SS509599LN-1700

WINDING: T4054138

NONE 2

TYPICAL MOTOR PERFORMANCE DATA

HP	KW	SYNC RPM	FL RPM	FRAME	ENCLOSURE	TYPE	KVA CODE	DESIGN
125	93	1800	1778	405T	DP	TDS	G	B

PH	HZ	VOLTS	AMPS	START TYPE	DUTY	INSL	S.F.	AMB	ELEV.
3	60	200/400	331/166	VVE START DELTA RUN	CONT	F	1.15	40	3300

F.L. EFF	94.5	3/4 LD EFF	94.5	1/2 LD EFF	93.6	GTD EFF		ELECT. TYPE	
F.L. PF	87.0	3/4 LD PF	84.5	1/2 LD PF	78.0	93.6		SQ CAGE IND RUN	

F.L. TORQUE	LR AMPS @ 460 V	L.R. TORQUE	B.D. TORQUE	F.L. RISE (° C)	
369 LB-FT	1,006	700 LB-FT 190%	950 LB-FT 257%	55	

PRESSURE @ 3	SOUND	POWER	ROTOR WK²	MAX. LOAD WK²	SAFE STALL TIME	STARTS/HOUR	MOTOR WGT
80 dBA	89 dBA		26.5 LB-FT²	0 LB-FT²	20 SEC.	0	1150 LB.

*** SUPPLEMENTAL INFORMATION ***

DE BRACKET TYPE	ODE BRACKET TYPE	MOUNT TYPE	MOTOR ORIENTATION	SEVERE DUTY	HAZARDOUS LOCATION	DRIP COVER	SCREENS	PAINT
STANDARD	STANDARD	RIGID	HORIZONTAL	NO	NONE	NO	NONE	WATTSaver

BEARINGS	GREASE	SHAFT TYPE	SPECIAL DE	SPECIAL ODE	SHAFT MATERIAL	FRAME MATERIAL
DE ODE						
BALL BALL	POLYREX EM	T	NONE	NONE	1045 HOT ROLLED (C-204)	CAST IRON
6316 6313						

THERMOSTATS	PROTECTORS	WDG RTD's	BRG RTD's	THERMISTORS	CONTROL	SPACE HEATERS
NONE	NOT	NONE	NONE	NONE	FALSE	NA

R1 (ohms/ph)	R2 (ohms/ph)	X1 (ohms/ph)	X2 (ohms/ph)	Xm (ohms/ph)	VIBRATION (in/sec)	FLOAT
0.024	0.016	0.142	0.161	3.893	0.150	ODE

* N O T E S *		INVERTER TORQUE: NONE INV. HP SPEED RANGE: NONE
	ENCODER: NONE NONE NONE	NONE PPR

DATE: 8/31/2018	BRAKE: NONE NONE	NONE
	FT-LB: NA	
	VOLTAGE: NONE	HZ:
	UL: NONE	

Data Sheet

Date: 8/31/2018

LM80145



Data @ 400 V

Motor Load Data

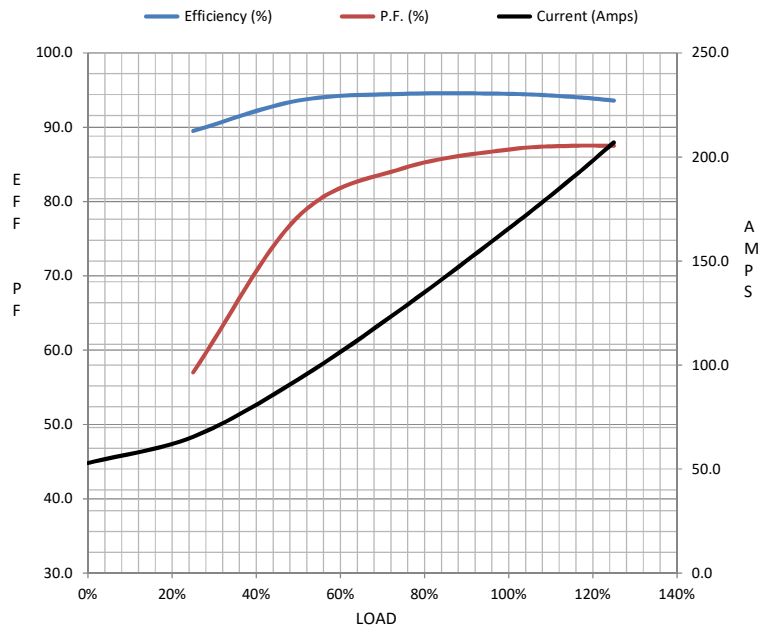
Load	0%	25%	50%	75%	100%	115%	125%	LR	
Current (Amps)	52.9	65.6	93.2	128	166	190	207	1,006	
Torque (ft-lb)	0.00	91.5	183	276	369	425	463	700	
RPM	1800	1795	1788	1782	1778	1,772	1768	0	
Efficiency (%)		89.5	93.6	94.5	94.5	94.1	93.6		
P.F. (%)	6.0	57.0	78.0	84.5	87.0	87.5	87.5	35.0	

Motor Speed Data

	LR	Pull-Up	BD	Rated	Idle
Speed (RPM)	0	900	1715	1778	1800
Current (Amps)	1,006	920	575	166	52.9
Torque (ft-lb)	700	650	950	369	0.00

Information Block

HP	125.0			
Sync. RPM	1800			
Frame	405			
Enclosure	DP			
Construction	TDS			
Voltage	200/400	V		
Frequency	60	Hz		
Design	B			
LR Code letter	G			
Service Factor	1.15			
Temp Rise @ FL	55	° C		
Duty	CONT			
Ambient	40	° C		
Elevation	1,000	feet		
Rotor/Shaft wk²	26.5	Lb-Ft²		
Ref Wdg	T4054138 NONE			
Sound Pressure @ 1M	80	dBA		
VFD Rating	NONE			
Outline Dwg	B-SS509599LN-1700			
Conn. Diag	A-EE7308AA-LN			
Additional Specifications:				
0				
0				
EQUIV CKT (OHMS / PHASE)				
R1	R2	X1	X2	Xm
0.0240	0.0160	0.1420	0.1610	3.8930



Speed - Torque Curve

