

PRODUCT INFORMATION PACKET



Model No: LM80136

Catalog No: LM80136

Fire Pump Motor, 100 & 75 HP, 3 Ph, 60 & 50 Hz, 230/460 & 190/380 V, 3600 & 3000 RPM, 365TS Frame,
DP



Regal and Leeson are trademarks of Regal Rexnord Corporation or one of its affiliated companies.

©2023 Regal Rexnord Corporation, All Rights Reserved. MC017097E



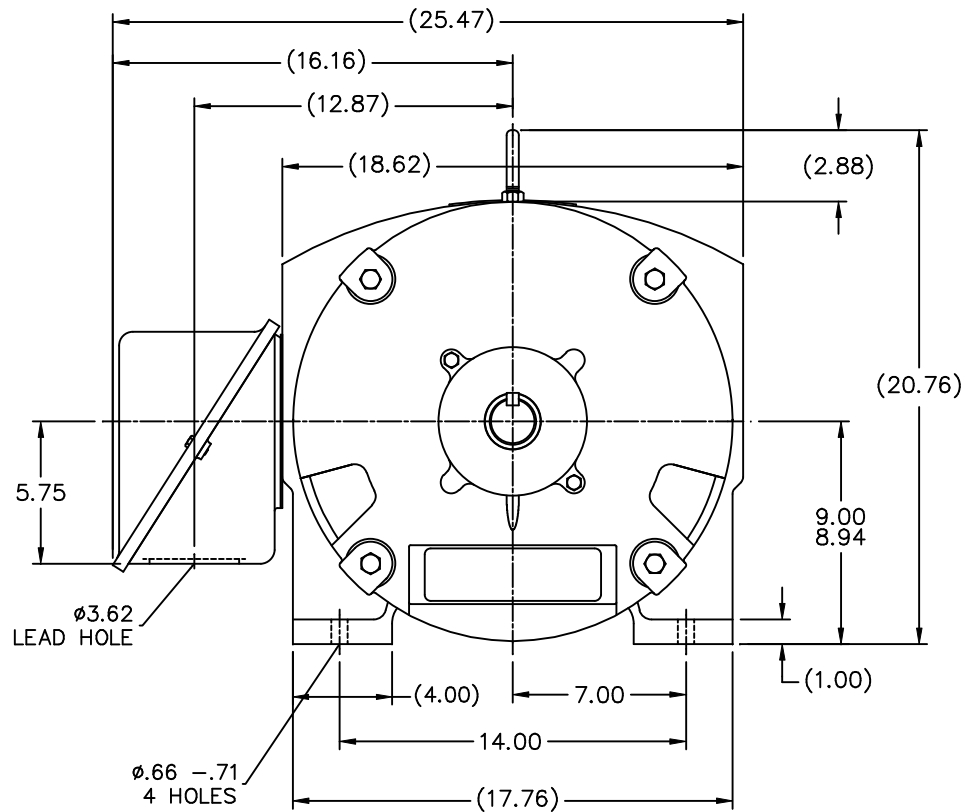
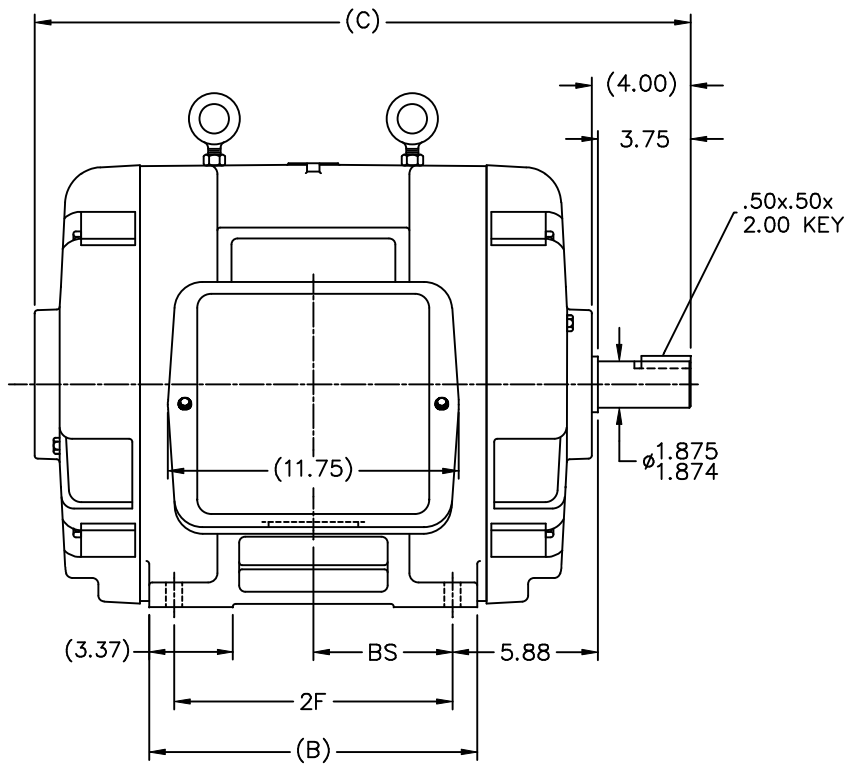


Nameplate Specifications

Phase	3	Output HP	100 & 75 Hp
Output KW	75.0 & 56.0 kW	Voltage	230/460 & 190/380 V
Speed	3550 & 2960 rpm	Service Factor	1.15 & 1.15
Frame	365TS	Enclosure	Drip Proof
Thermal Protection	No Protection	Efficiency	93 & 91.7 %
Ambient Temperature	40 °C	Frequency	60 & 50 Hz
Current	240/120 & 216/108 A	Power Factor	83.5
Duty	Continuous	Insulation Class	F
Design Code	B	KVA Code	F
Drive End Bearing Size	6312	Opp Drive End Bearing Size	6312
UL	No	CSA	Y
CE	Y	IP Code	12
Number of Speeds	1		


Technical Specifications

Electrical Type	Squirrel Cage Induction Run	Starting Method	Wye Start Delta Run
Poles	2	Rotation	Reversible
Resistance Main	.064 Ohms	Mounting	Rigid Base
Motor Orientation	Horizontal	Drive End Bearing	Ball
Opp Drive End Bearing	Ball	Frame Material	Cast Iron
Shaft Type	TS	Overall Length	27.50 in
Frame Length	15.00 in	Shaft Diameter	1.875 in
Shaft Extension	3.75 in	Assembly/Box Mounting	F1/F2 CAPABLE
Outline Drawing	B-SS509469LN-1500	Connection Drawing	A-EE7308AA-LN



NOTES:

1. CONDUIT BOX CAN BE ROTATED IN 90° STEPS.
2. CONDUIT BOX CAN BE MOUNTED ON OPPOSITE SIDE BY REMOVING BRACKETS AND TURNING FRAME 180°.
3. NAMEPLATE TO BE READ FROM CONDUIT BOX SIDE OF MOTOR

						TOLERANCES UNLESS SPECIFIED			DRAWN KL 03-31-2003			
						DEC.	INCHES		CHK	GPH	03-31-2003	
						.X	±.1		APPD	JES	03-31-2003	
						.XX	±.03	TITLE OUTLINE	SCALE 1=5			
2 REVISED KEY LENGTH MU65502 LMC 04-04-2005						.XXX	±.005	360TS FR. —DR.PR.	REF			
1 NEW DRAWING MU45965 KL 03-31-2003						.XXXX	±.0005	MAT'L	FMF			
NO. REVISION						CHK	ANG	FINISH	PREV			
BY & DATE						RFP		CAD FILE ss509469ln	SIZE	DRAWING NO.	PAGE	OF
THIS DRAWING IN DESIGN AND DETAIL IS OUR PROPERTY AND MUST NOT BE USED EXCEPT IN CONNECTION WITH OUR WORK ALL RIGHTS OF DESIGN AND INVENTION ARE RESERVED THIS IS AN ELECTRONICALLY GENERATED DOCUMENT — DO NOT SCALE THIS PRINT						DIST	WA		B	SS509469LN	2	REV.

T12 _____
 T1 _____
 T6 _____ L1
 T7 _____

T2 _____
 T4 _____
 T8 _____ L2
 T10 _____

T3 _____
 T5 _____
 T9 _____ L3
 T11 _____

LOW VOLTAGE

T12 _____ L1
 T1 _____

T4 _____
 T7 _____

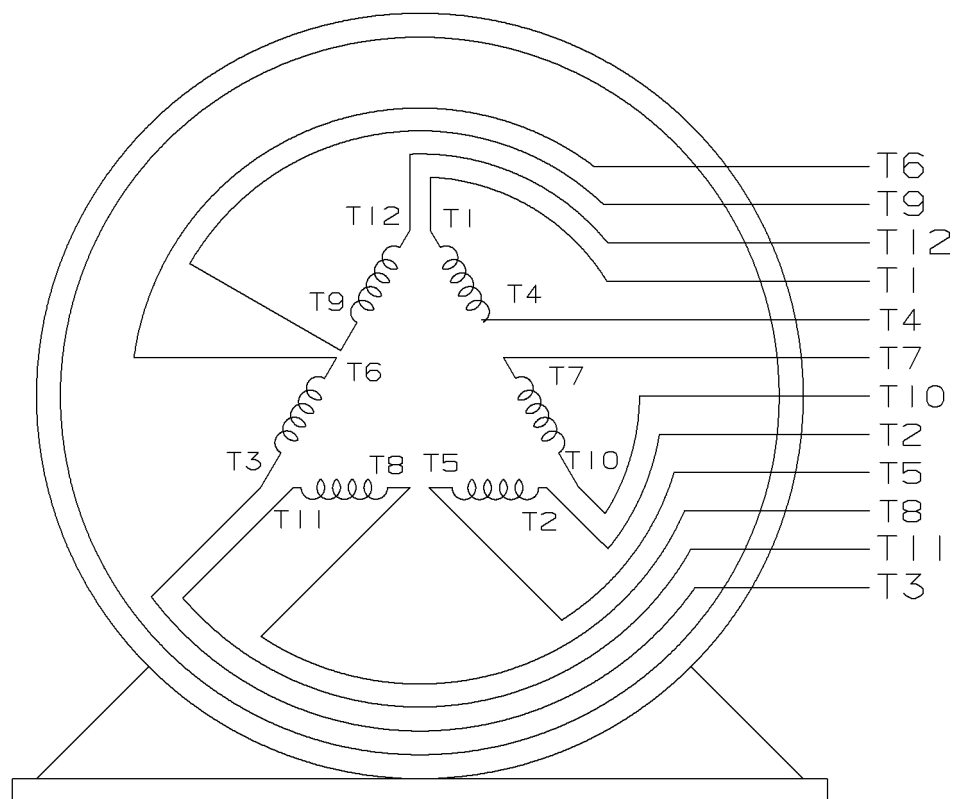
T2 _____ L2
 T10 _____

T5 _____
 T8 _____

T3 _____ L3
 T11 _____

T6 _____
 T9 _____

HIGH VOLTAGE



VIEW OF TERMINAL END

					✓ UNLESS OTHERWISE SPECIFIED DIMENSIONS ARE IN INCHES TOL. ON XX±.02 XXX±.005 XXXX±.0005 ANGLES± 7°30"		
2	08-09-1999	RE-ISSUE, ADDED '-' TO PART NUMBER	BLR		MAX. SURFACE ROUGHNESS UNLESS OTHERWISE NOTED		DRAWN BY TRB 07-16-1999
1	06-18-1999	NEW DRAWING	TRB		FINISH		CHKD BY ML 06-18-1999
					MATERIAL		APPD BY GK 06-18-1999
REV	DATE	CHANGE	NAME	PART NAME 3 PHASE CONNECTION DIAGRAM 2/1 DELTA - 12 LEADS			DRWG NO A- EE7308AA-LN
					PURCHASED	CADD FILE NO.	EE7308AALN

ERROR: undefined
OFFENDING COMMAND: Pscrip
STACK:

Data Sheet

Date: 2/1/2018

LM80136



Data @ 460 V

Motor Load Data

Load	0%	25%	50%	75%	100%	115%	125%	LR	
Current (Amps)	34.0	45.5	65.5	91.0	120	138	150	610	
Torque (ft-lb)	0.00	36.5	73.5	110	148	170	185	215	
RPM	3600	3588	3575	3565	3550	3,540	3530	0	
Efficiency (%)		90.2	92.4	93.0	93.0	92.4	91.7		
P.F. (%)	8.0	57.0	77.0	82.0	83.5	84.0	84.5	32.0	

Motor Speed Data

	LR	Pull-Up	BD	Rated	Idle	Information Block	
Speed (RPM)	0	1800	3425	3550	3600	HP	100.0
Current (Amps)	610	525	375	120	34.0	Sync. RPM	3600
Torque (ft-lb)	215	185	315	148	0.00	Frame	365
						Enclosure	DP
						Construction	TDS
						Voltage	230/460#190/380 V
						Frequency	60 Hz
						Design	B
						LR Code letter	F
						Service Factor	1.15
						Temp Rise @ FL	55 °C
						Duty	CONT
						Ambient	40 °C
						Elevation	1,000 feet
						Rotor/Shaft wk²	6.9 Lb-Ft²
						Ref Wdg	T365256 NONE
						Sound Pressure @ 1M	80 dBA
						VFD Rating	NONE
						Outline Dwg	B-SS509469LN-1500
						Conn. Diag	A-EE7308AA-LN
Additional Specifications:							
0							
0							
EQUIV CKT (OHMS / PHASE)							
	R1	R2	X1	X2	Xm		
	0.0430	0.0320	0.2770	0.2980	8.7760		

Speed - Torque Curve

