

PRODUCT INFORMATION PACKET



Model No: LM80130

Catalog No: LM80130

Fire Pump Motor, 75 & 60 HP, 3 Ph, 60 & 50 Hz, 230/460 & 190/380 V, 3600 & 3000 RPM, 364TS Frame,
DP



Regal and Leeson are trademarks of Regal Rexnord Corporation or one of its affiliated companies.

©2023 Regal Rexnord Corporation, All Rights Reserved. MC017097E



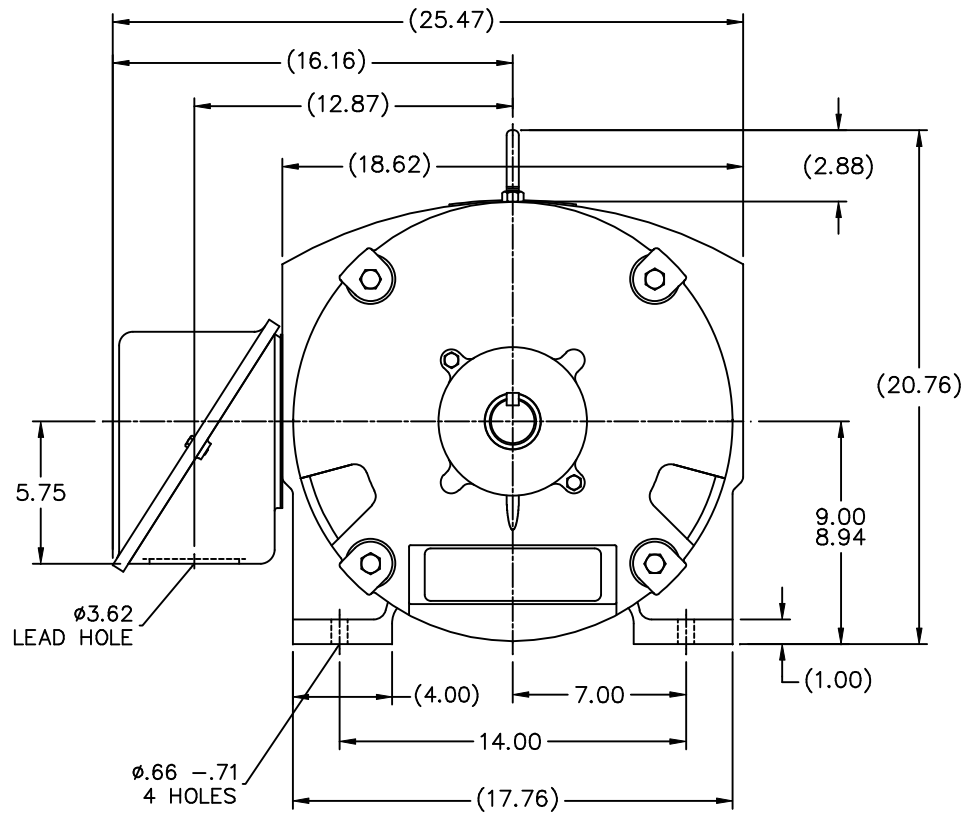
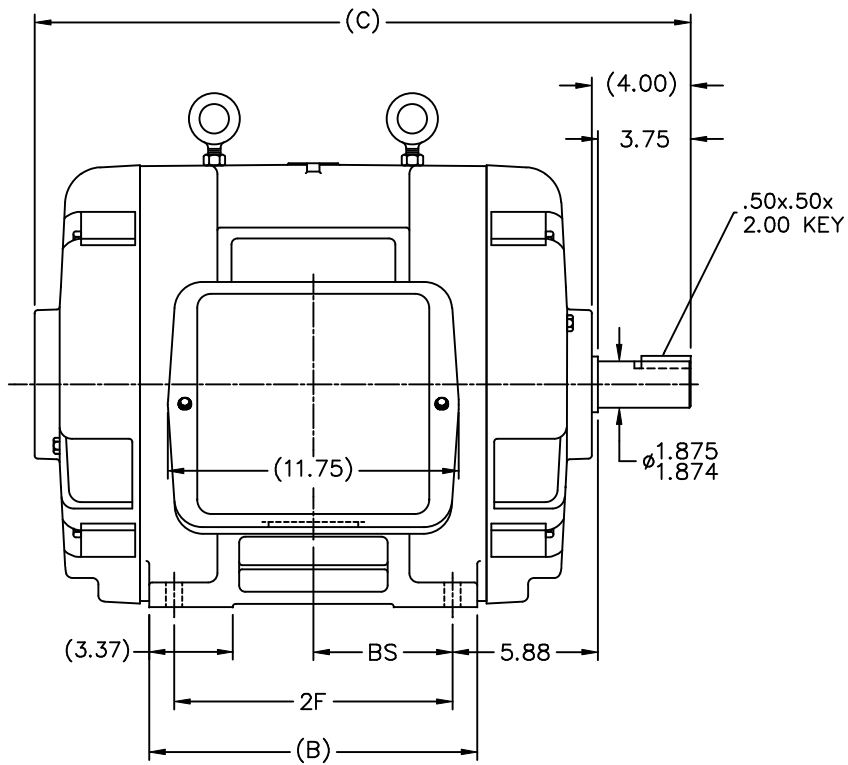


Nameplate Specifications

Phase	3	Output HP	75 & 60 Hp
Output KW	56.0 & 45.0 kW	Voltage	230/460 & 190/380 V
Speed	3560 & 2960 rpm	Service Factor	1.15 & 1.15
Frame	364TS	Enclosure	Drip Proof
Thermal Protection	No Protection	Efficiency	93 & 93 %
Ambient Temperature	40 °C	Frequency	60 & 50 Hz
Current	183/91.5 & 172/86 A	Power Factor	82
Duty	Continuous	Insulation Class	F
Design Code	B	KVA Code	F
Drive End Bearing Size	6312	Opp Drive End Bearing Size	6312
UL	No	CSA	Y
CE	Y	IP Code	12
Number of Speeds	1		


Technical Specifications

Electrical Type	Squirrel Cage Induction Run	Starting Method	Part Wdg Start Low Volt Only & Wye Start Delta Run
Poles	2	Rotation	Reversible
Resistance Main	.34 Ohms	Mounting	Rigid Base
Motor Orientation	Horizontal	Drive End Bearing	Ball
Opp Drive End Bearing	Ball	Frame Material	Cast Iron
Shaft Type	TS	Overall Length	26.50 in
Frame Length	14.00 in	Shaft Diameter	1.875 in
Shaft Extension	3.75 in	Assembly/Box Mounting	F1/F2 CAPABLE
Connection Drawing	A-EE7308AA-LN	Outline Drawing	B-SS509469LN-1400



NOTES:

1. CONDUIT BOX CAN BE ROTATED IN 90° STEPS.
2. CONDUIT BOX CAN BE MOUNTED ON OPPOSITE SIDE BY REMOVING BRACKETS AND TURNING FRAME 180°.
3. NAMEPLATE TO BE READ FROM CONDUIT BOX SIDE OF MOTOR

						TOLERANCES UNLESS SPECIFIED			DRAWN KL 03-31-2003			
						DEC.	INCHES		CHK	GPH	03-31-2003	
						.X	±.1		APPD	JES	03-31-2003	
						.XX	±.03	TITLE OUTLINE	SCALE 1=5			
						.XXX	±.005	360TS FR. —DR.PR.	REF			
						.XXXX	±.0005	MAT'L	FMF			
						CHK	ANG	FINISH	PREV			
						RFP		CAD FILE ss509469ln	SIZE	DRAWING NO.	PAGE	OF
						DIST	WA		B	SS509469LN		2

T12 _____
 T1 _____
 T6 _____ L1
 T7 _____

T2 _____
 T4 _____
 T8 _____ L2
 T10 _____

T3 _____
 T5 _____
 T9 _____ L3
 T11 _____

LOW VOLTAGE

T12 _____ L1
 T1 _____

T4 _____
 T7 _____

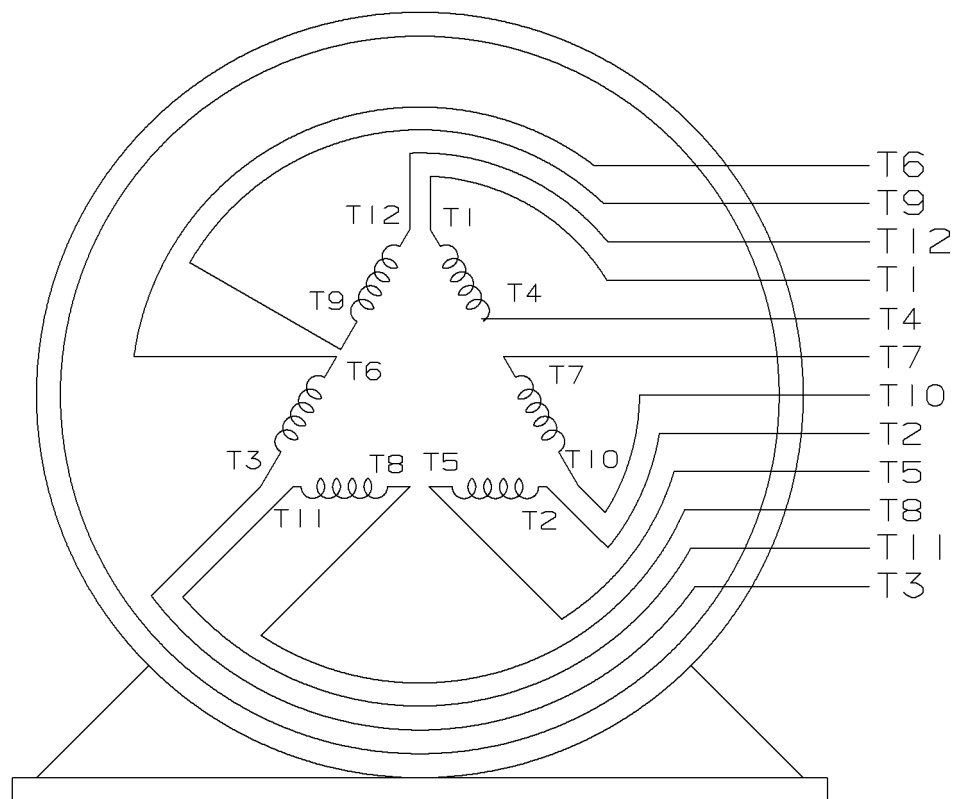
T2 _____ L2
 T10 _____

T5 _____
 T8 _____

T3 _____ L3
 T11 _____

T6 _____
 T9 _____

HIGH VOLTAGE



VIEW OF TERMINAL END

					✓ UNLESS OTHERWISE SPECIFIED DIMENSIONS ARE IN INCHES TOL. ON XX±.02 XXX±.005 XXXX±.0005 ANGLES± 7°30"		
2	08-09-1999	RE-ISSUE, ADDED '-' TO PART NUMBER	BLR		MAX. SURFACE ROUGHNESS UNLESS OTHERWISE NOTED		DRAWN BY TRB 07-16-1999
1	06-18-1999	NEW DRAWING	TRB		FINISH		CHKD BY ML 06-18-1999
					MATERIAL		APPD BY GK 06-18-1999
REV	DATE	CHANGE	NAME	PART NAME 3 PHASE CONNECTION DIAGRAM 2/1 DELTA - 12 LEADS			DRWG NO A- EE7308AA-LN
					PURCHASED	CADD FILE NO.	EE7308AALN

ERROR: undefined
OFFENDING COMMAND: Pscrip
STACK:

Data Sheet

Date: 2/1/2018

LM80130



Data @ 460 V

Motor Load Data

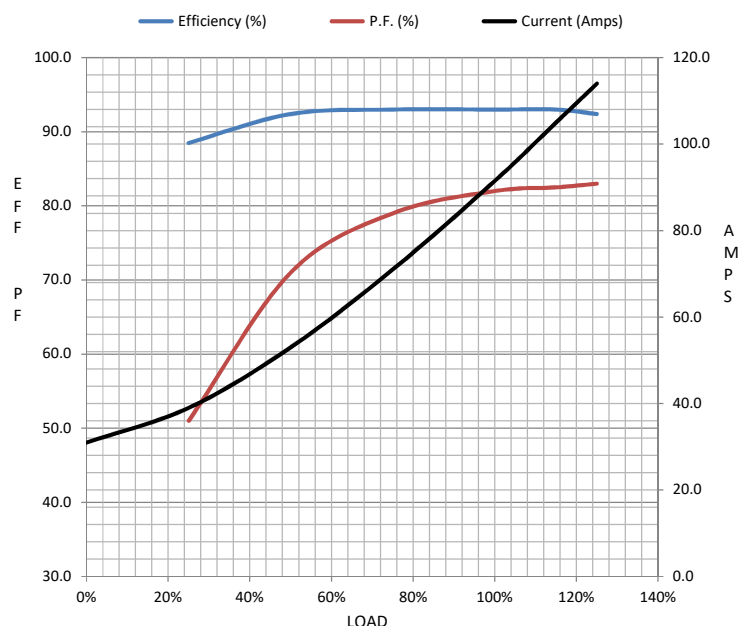
Load	0%	25%	50%	75%	100%	115%	125%	LR	
Current (Amps)	31.0	39.0	53.0	71.0	91.5	105	114	500	
Torque (ft-lb)	0.00	27.5	55.0	83.0	111	128	140	175	
RPM	3600	3588	3578	3565	3560	3,550	3540	0	
Efficiency (%)		88.5	92.4	93.0	93.0	93.0	92.4		
P.F. (%)	6.5	51.0	71.0	79.0	82.0	82.5	83.0	34.0	

Motor Speed Data

	LR	Pull-Up	BD	Rated	Idle
Speed (RPM)	0	1800	3375	3560	3600
Current (Amps)	500	450	325	91.5	31.0
Torque (ft-lb)	175	165	260	111	0.00

Information Block

HP	75.0			
Sync. RPM	3600			
Frame	364			
Enclosure	DP			
Construction	TDS			
Voltage	230/460#190/380	V		
Frequency	60	Hz		
Design	B			
LR Code letter	F			
Service Factor	1.15			
Temp Rise @ FL	45	° C		
Duty	CONT			
Ambient	40	° C		
Elevation	1,000	feet		
Rotor/Shaft wk²	6.1	Lb-Ft²		
Ref Wdg	T364263 NONE			
Sound Pressure @ 1M	80	dBA		
VFD Rating	NONE			
Outline Dwg	B-SS509469LN-1400			
Conn. Diag	A-EE7308AA-LN			
Additional Specifications:				
0				
0				
EQUIV CKT (OHMS / PHASE)				
R1	R2	X1	X2	Xm
0.0600	0.0400	0.3650	0.3260	8.8450



Speed - Torque Curve

