

PRODUCT INFORMATION PACKET



Model No: LM80125
Catalog No: LM80125
60 HP Fire Pump Motor, 3 phase, 1800 RPM, 200/400 V, 364TS Frame, ODP
Fire Pump Motors



Regal and Leeson are trademarks of Regal Rexnord Corporation or one of its affiliated companies.
©2021 Regal Rexnord Corporation, All Rights Reserved. MC017097E





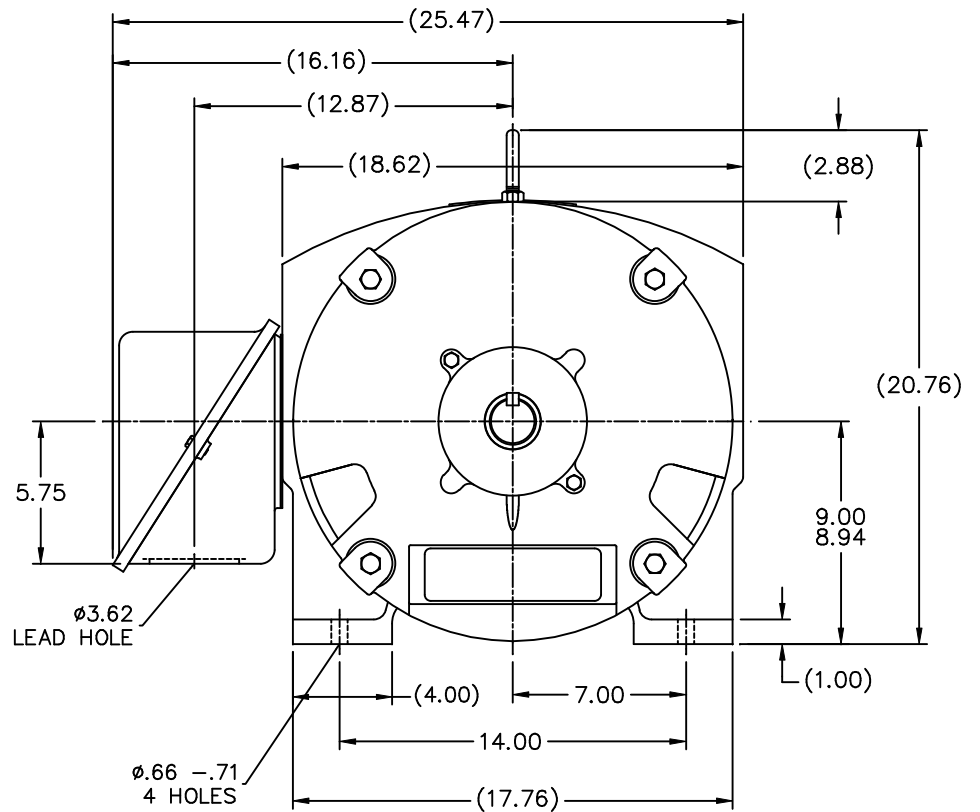
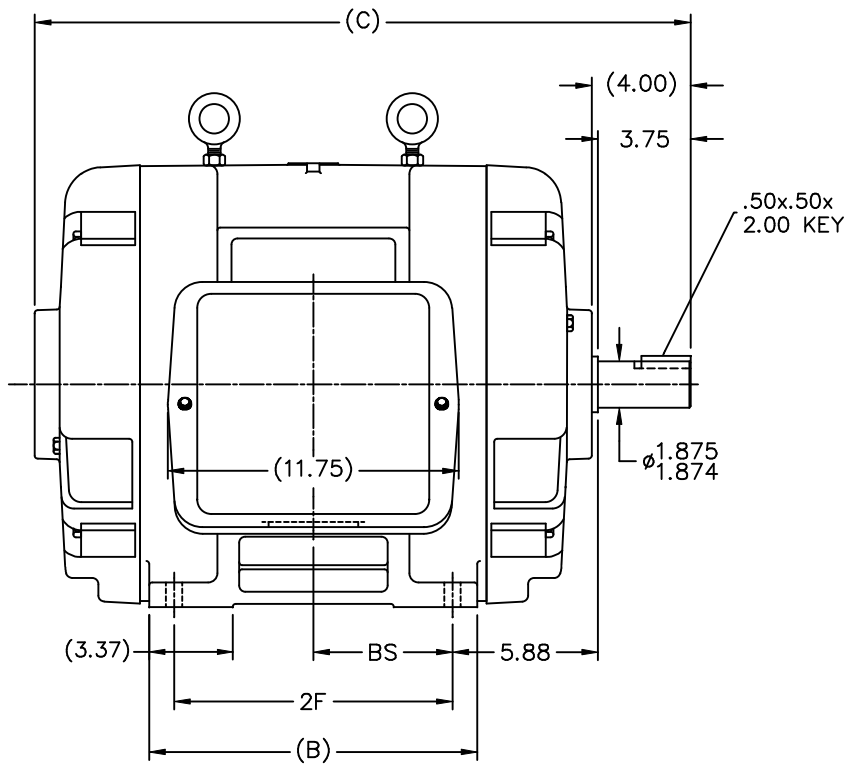
Nameplate Specifications

Output HP	60 Hp	Output KW	45.0 kW
Frequency	60 Hz	Voltage	200/400 V
Current	166.0/83.0 A	Speed	1780 rpm
Service Factor	1.15	Phase	3
Efficiency	93.6 %	Power Factor	83.5
Duty	Continuous	Insulation Class	F
Design Code	B	KVA Code	F
Frame	364TS	Enclosure	Drip Proof
Thermal Protection	No	Ambient Temperature	40 °C
Drive End Bearing Size	6312	Opp Drive End Bearing Size	6312
UL	No	CSA	Y
CE	Y	IP Code	12
Number of Speeds	1		

Technical Specifications


Electrical Type	Squirrel Cage Induction Run	Starting Method	Part Wdg Start Low Volt Only & Wye Start Delta Run
Poles	4	Rotation	Reversible
Resistance Main	.115 Ohms	Mounting	Rigid Base
Motor Orientation	Horizontal	Drive End Bearing	Ball
Opp Drive End Bearing	Ball	Frame Material	Cast Iron
Shaft Type	TS	Overall Length	26.50 in
Frame Length	14.02 in	Shaft Diameter	1.875 in
Shaft Extension	3.75 in	Assembly/Box Mounting	F1/F2 CAPABLE
Connection Drawing	A-EE7308AA-LN	Outline Drawing	B-SS509469LN-1400

This is an uncontrolled document once printed or downloaded and is subject to change without notice. Date Created:10/12/2021



NOTES:

1. CONDUIT BOX CAN BE ROTATED IN 90° STEPS.
2. CONDUIT BOX CAN BE MOUNTED ON OPPOSITE SIDE BY REMOVING BRACKETS AND TURNING FRAME 180°.
3. NAMEPLATE TO BE READ FROM CONDUIT BOX SIDE OF MOTOR

						TOLERANCES UNLESS SPECIFIED			DRAWN KL 03-31-2003			
						DEC.	INCHES		CHK	GPH	03-31-2003	
						.X	±.1		APPD	JES	03-31-2003	
						.XX	±.03	TITLE OUTLINE	SCALE 1=5			
						.XXX	±.005	360TS FR. —DR.PR.	REF			
						.XXXX	±.0005	MAT'L	FMF			
						CHK	ANG	FINISH	PREV			
						RFP		CAD FILE ss509469ln	SIZE	DRAWING NO.	PAGE	OF
						DIST	WA		B	SS509469LN		2

T12 _____
 T1 _____
 T6 _____ L1
 T7 _____

T2 _____
 T4 _____
 T8 _____ L2
 T10 _____

T3 _____
 T5 _____
 T9 _____ L3
 T11 _____

LOW VOLTAGE

T12 _____ L1
 T1 _____

T4 _____
 T7 _____

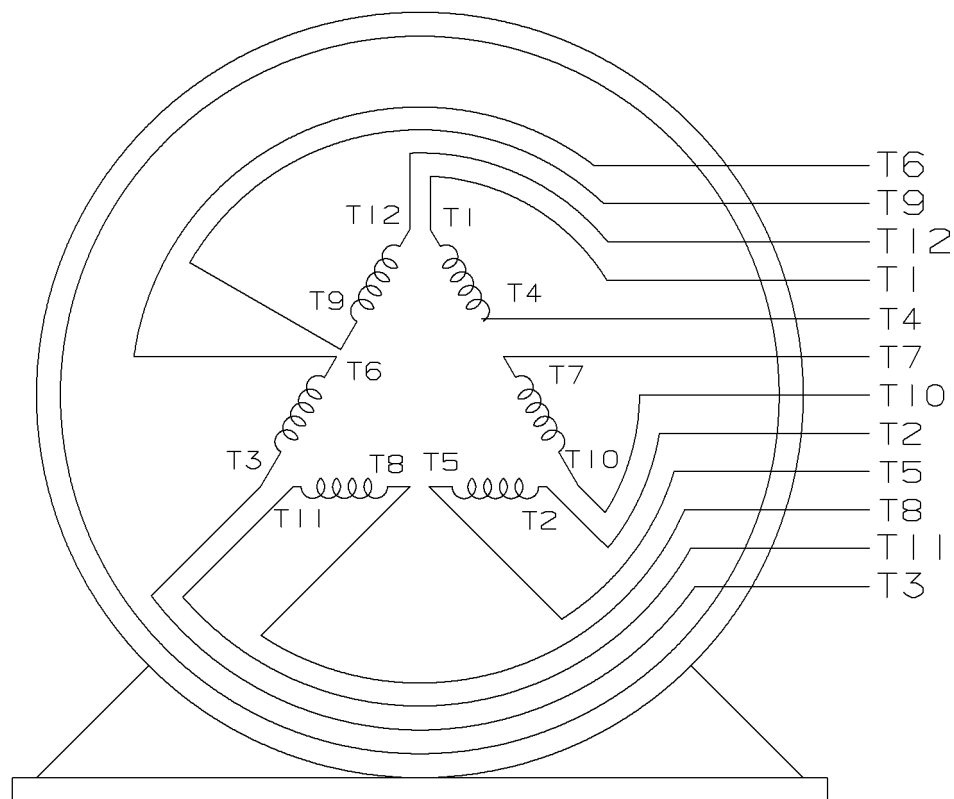
T2 _____ L2
 T10 _____

T5 _____
 T8 _____

T3 _____ L3
 T11 _____

T6 _____
 T9 _____

HIGH VOLTAGE



VIEW OF TERMINAL END

					✓ UNLESS OTHERWISE SPECIFIED DIMENSIONS ARE IN INCHES TOL. ON XX±.02 XXX±.005 XXXX±.0005 ANGLES± 7°30"		
2	08-09-1999	RE-ISSUE, ADDED '-' TO PART NUMBER	BLR		MAX. SURFACE ROUGHNESS UNLESS OTHERWISE NOTED		DRAWN BY TRB 07-16-1999
					FINISH		CHKD BY ML 06-18-1999
1	06-18-1999	NEW DRAWING	TRB		MATERIAL		APPD BY GK 06-18-1999
REV	DATE	CHANGE	NAME	PART NAME 3 PHASE CONNECTION DIAGRAM 2/1 DELTA - 12 LEADS			DRWG NO A- EE7308AA-LN
				PURCHASED	CADD FILE NO.	EE7308AALN	

ERROR: undefined
OFFENDING COMMAND: Pscrip
STACK:



1051 CHEYENNE AVE.
GRAFTON, WI 53024
PH. 262-277-8810

DATA VOLTS: 460

CERTIFICATION DATA SHEET

CONN. DIAGRAM: A-EE7308AA-LN

CAT #: LM80125

OUTLINE: B-SS509469LN-1400

WINDING: T3644140

NONE 11

TYPICAL MOTOR PERFORMANCE DATA

HP	KW	SYNC RPM	FL RPM	FRAME	ENCLOSURE	TYPE	KVA CODE	DESIGN
60	45	1800	1780	364TS	DP	TDS	F	B

PH	HZ	VOLTS	AMPS	START TYPE	DUTY	INSL	S.F.	AMB	ELEV.
3	60	200/400	166/83	PWS(LV ONLY) & YDRU	CONT	F	1.15	40	3300

F.L. EFF	93.6	3/4 LD EFF	93.6	1/2 LD EFF	93.0	GTD EFF	ELECT. TYPE
F.L. PF	83.5	3/4 LD PF	80.0	1/2 LD PF	72.0	92.4	SQ CAGE IND RUN

F.L. TORQUE	LR AMPS @ 460 V	L.R. TORQUE	B.D. TORQUE	F.L. RISE (° C)
177 LB-FT	477	300 LB-FT 169%	400 LB-FT 226%	40

PRESSURE @ 3	SOUND	POWER	ROTOR WK²	MAX. LOAD WK²	SAFE STALL TIME	STARTS/HOUR	MOTOR WGT
75 dBA	84 dBA		12.2 LB-FT²	300 LB-FT²	20 SEC.	2	675 LB.

*** SUPPLEMENTAL INFORMATION ***

DE BRACKET TYPE	ODE BRACKET TYPE	MOUNT TYPE	MOTOR ORIENTATION	SEVERE DUTY	HAZARDOUS LOCATION	DRIP COVER	SCREENS	PAINT
STANDARD	STANDARD	RIGID	HORIZONTAL	NO	NONE	NO	NONE	WATTSaver

BEARINGS	GREASE	SHAFT TYPE	SPECIAL DE	SPECIAL ODE	SHAFT MATERIAL	FRAME MATERIAL
DE ODE						
BALL BALL	POLYREX EM	TS	NONE	NONE	1045 HOT ROLLED (C-204)	CAST IRON
6312 6312						

THERMOSTATS	PROTECTORS	WDG RTD's	BRG RTD's	THERMISTORS	CONTROL	SPACE HEATERS
NONE	NOT	NONE	NONE	NONE	FALSE	NA

R1 (ohms/ph)	R2 (ohms/ph)	X1 (ohms/ph)	X2 (ohms/ph)	Xm (ohms/ph)	VIBRATION (in/sec)	FLOAT
0.06	0.036	0.333	0.408	7.94	0.150	ODE

* N O T E S *		INVERTER TORQUE: NONE INV. HP SPEED RANGE: NONE
	ENCODER: NONE NONE NONE	NONE PPR

DATE: 8/30/2018	BRAKE: NONE NONE	NONE
	FT-LB: NA	
	VOLTAGE: NONE	HZ:
	UL: NONE	

Data Sheet

Date: 8/30/2018

LM80125



Data @ 400 V

Motor Load Data

Load	0%	25%	50%	75%	100%	115%	125%	LR	
Current (Amps)	29.3	35.1	47.7	64.4	82.8	94.9	104	477	
Torque (ft-lb)	0.00	44.0	88.0	132	177	204	222	300	
RPM	1800	1795	1790	1785	1780	1,775	1770	0	
Efficiency (%)		90.2	93.0	93.6	93.6	93.0	92.4		
P.F. (%)	5.5	51.0	72.0	80.0	83.5	84.0	84.0	31.0	

Motor Speed Data

	LR	Pull-Up	BD	Rated	Idle						
Speed (RPM)	0	900	1675	1780	1800	Information Block					
Current (Amps)	477	431	259	82.8	29.3	HP	60.0				
Torque (ft-lb)	300	275	400	177	0.00	Sync. RPM	1800				
<div><div>— Efficiency (%) — P.F. (%) — Current (Amps)</div><div>EFFICIENCY (%)</div><div>P.F. (%)</div><div>CURRENT (AMPS)</div><div>LOAD</div></div>						Frame	364				
						Enclosure	DP				
						Construction	TDS				
						Voltage	200/400	V			
						Frequency	60	Hz			
						Design	B				
						LR Code letter	F				
						Service Factor	1.15				
						Temp Rise @ FL	40	° C			
						Duty	CONT				
						Ambient	40	° C			
						Elevation	1,000	feet			
						Rotor/Shaft wk²	12.2	Lb-Ft²			
						Ref Wdg	T3644140	NONE			
						Sound Pressure @ 1M	75	dBA			
						VFD Rating	NONE				
						Outline Dwg	B-SS509469LN-1400				
						Conn. Diag	A-EE7308AA-LN				
						Additional Specifications:					
						0					
						0					
						EQUIV CKT (OHMS / PHASE)					
						R1	R2	X1		X2	Xm
0.0600	0.0360	0.3330		0.4080	7.9400						

Speed - Torque Curve

