

# PRODUCT INFORMATION PACKET



Model No: LM80105  
Catalog No: LM80105  
25 HP Fire Pump Motor, 3 phase, 1800 RPM, 200/400 V, 284T Frame, ODP  
Fire Pump Motors

Regal and Leeson are trademarks of Regal Rexnord Corporation or one of its affiliated companies.  
©2021 Regal Rexnord Corporation, All Rights Reserved. MC017097E





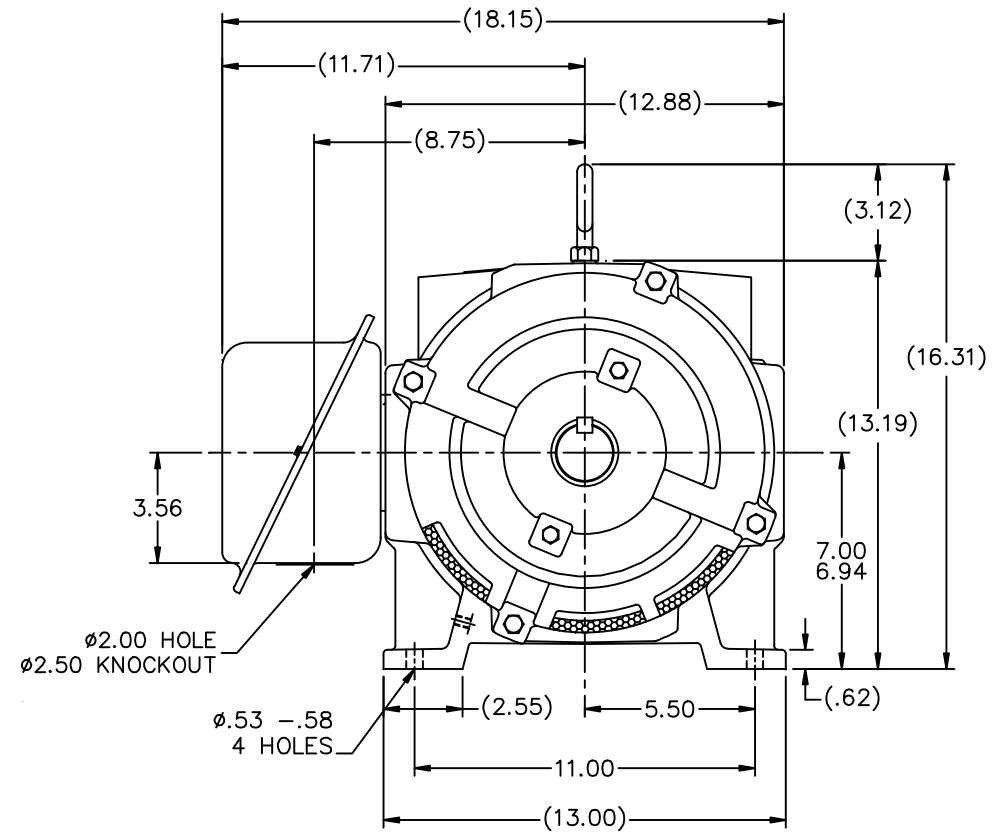
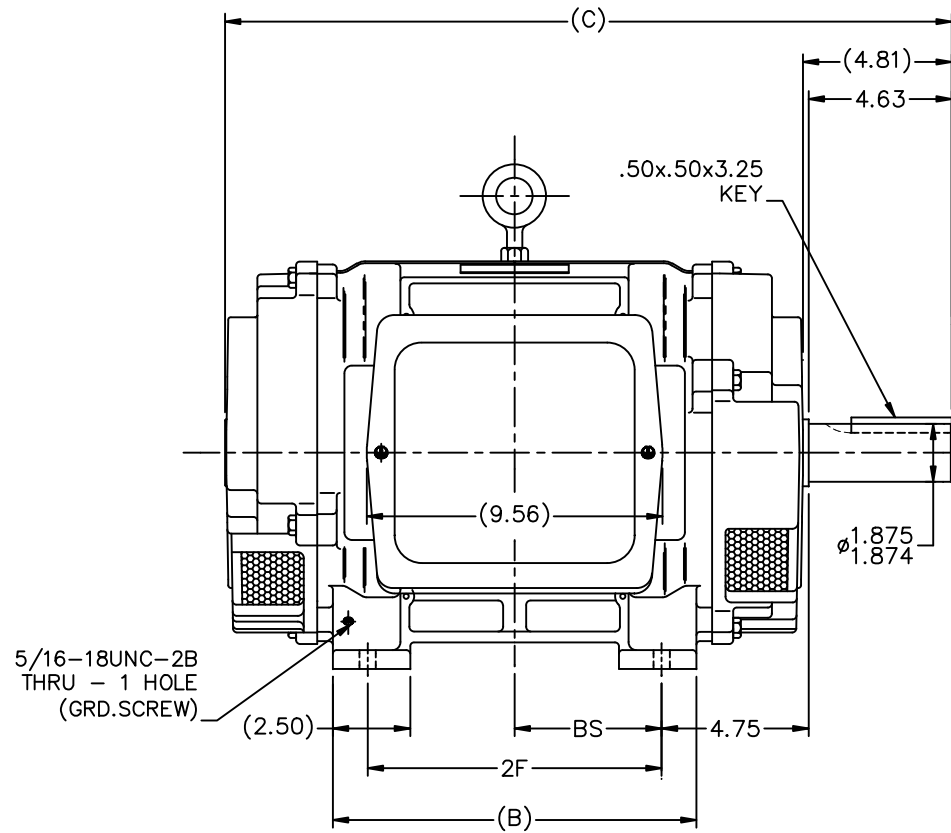
### Nameplate Specifications

Output HP	25 Hp	Output KW	18.7 kW
Frequency	60 Hz	Voltage	200/400 V
Current	70.0/35.0 A	Speed	1765 rpm
Service Factor	1.15	Phase	3
Efficiency	91.7 %	Power Factor	84
Duty	Continuous	Insulation Class	F
Design Code	B	KVA Code	F
Frame	284T	Enclosure	Drip Proof
Thermal Protection	No	Ambient Temperature	40 °C
Drive End Bearing Size	311	Opp Drive End Bearing Size	210
UL	No	CSA	Y
CE	Y	IP Code	12
Number of Speeds	1		

### Technical Specifications

Electrical Type	Squirrel Cage Induction Run	Starting Method	Wye Start Delta Run
Poles	4	Rotation	Reversible
Resistance Main	.399 Ohms	Mounting	Rigid Base
Motor Orientation	Horizontal	Drive End Bearing	Ball
Opp Drive End Bearing	Ball	Frame Material	Cast Iron
Shaft Type	T	Overall Length	23.49 in
Frame Length	13.00 in	Shaft Diameter	1.875 in
Shaft Extension	4.81 in	Assembly/Box Mounting	F1/F2 CAPABLE
Connection Drawing	A-EE7358-LN	Outline Drawing	B-SS200030LN-1275

This is an uncontrolled document once printed or downloaded and is subject to change without notice. Date Created:10/07/2021



## NOTES

1. BOX CAN BE ROTATED IN 90° STEPS
2. BOX CAN BE MOUNTED ON OPPOSITE SIDE BY REMOVING BRACKETS AND TURNING FRAME 180°
3. NAMEPLATE TO BE READ FROM CONDUIT BOX SIDE OF MOTOR

DASH	FRAME	B	C	2F	BS
1275	284T	11.75	23.49	9.50	4.75
1425	286T	13.25	24.99	11.00	5.50

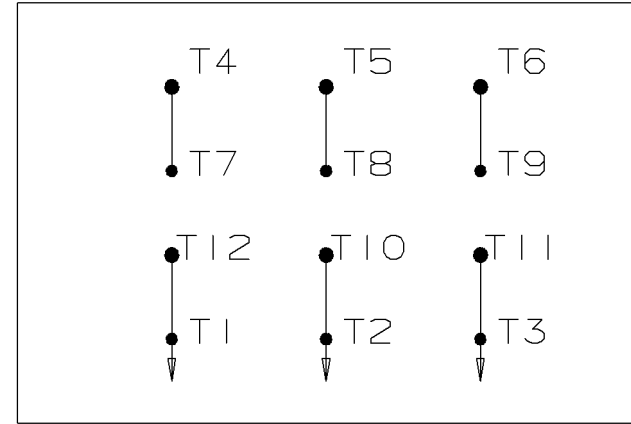
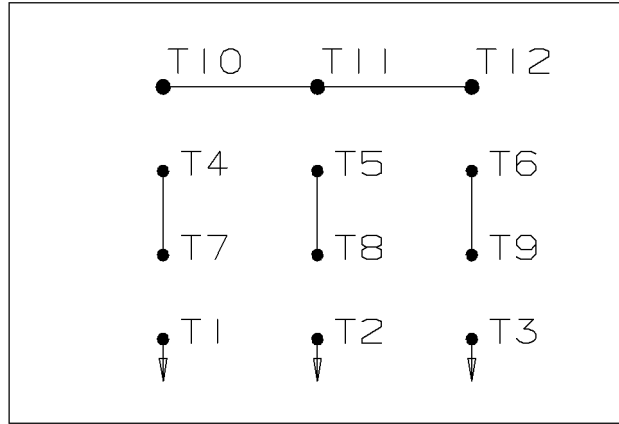
				TOLERANCES UNLESS SPECIFIED		Lincoln MOTOR		DRAWN CTO 12-12-2003	
				DEC.	INCHES			CHK	ML 12-12-2003
				.X	±.1			APPD	BW 12-12-2003
				.XX	±.03	TITLE OUTLINE - DR.PR. - CAST IRON		SCALE 1=4	
				.XXX	±.005	280T FR. - BB - TS - DBL. END VENT.		REF	
				.ML	±.0005	MAT'L		FMF MU49135	
				CHK	ANG ±7°30"	FINISH		PREV	
				RFP	12-12-2003	CAD FILE ss200030ln		SIZE	DRAWING NO. PAGE OF REV.
				DIST	LB			B	SS200030LN 2

THIS DRAWING IN DESIGN AND DETAIL IS OUR PROPERTY AND MUST NOT BE USED EXCEPT IN CONNECTION WITH OUR WORK. ALL RIGHTS OF DESIGN AND INVENTION ARE RESERVED. THIS IS AN ELECTRONICALLY GENERATED DOCUMENT - DO NOT SCALE THIS PRINT

# WYE START

# HIGH VOLTAGE

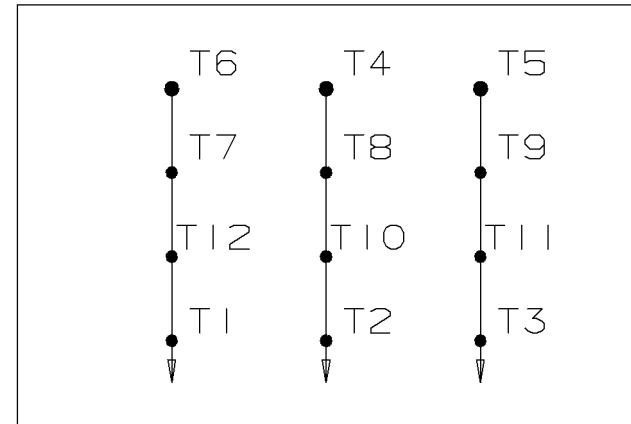
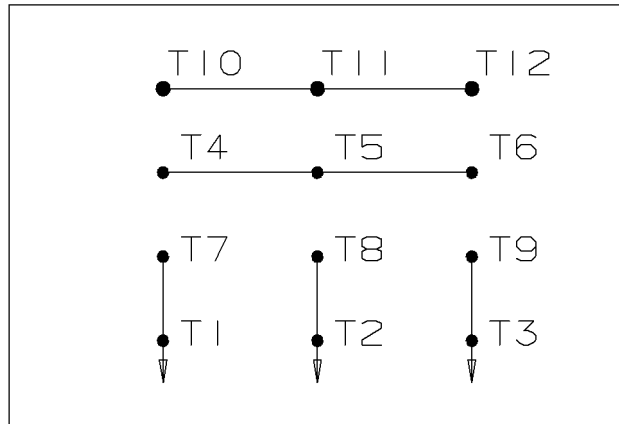
# DELTA RUN



# WYE START

# LOW VOLTAGE

# DELTA RUN



4/2 CKTY Δ

				✓ UNLESS OTHERWISE SPECIFIED DIMENSIONS ARE IN INCHES TOL. ON XX±.02 XXX±.005 XXXX±.0005 ANGLES± 7°30"			
				MAX. SURFACE ROUGHNESS UNLESS OTHERWISE NOTED		DRAWN BY DRS	12-07-1999
				FINISH		CHKD BY ML	12-07-1999
				MATERIAL		APPD BY TB	12-07-1999
REV	DATE	CHANGE	NAME	PART NAME CONNECTION DIAGRAM			DRWG NO A- EE7358-LN
					PURCHASED	CADD FILE NO.	EE7358-LN