

PRODUCT INFORMATION PACKET



Model No: LM80116
Catalog No: LM80116

Fire Pump Motor, 40 & 30 HP, 3 Ph, 60 & 50 Hz, 230/460 & 190/380 V, 1800 & 1500 RPM, 324T Frame, DP



Regal and Leeson are trademarks of Regal Rexnord Corporation or one of its affiliated companies.
©2023 Regal Rexnord Corporation, All Rights Reserved. MC017097E



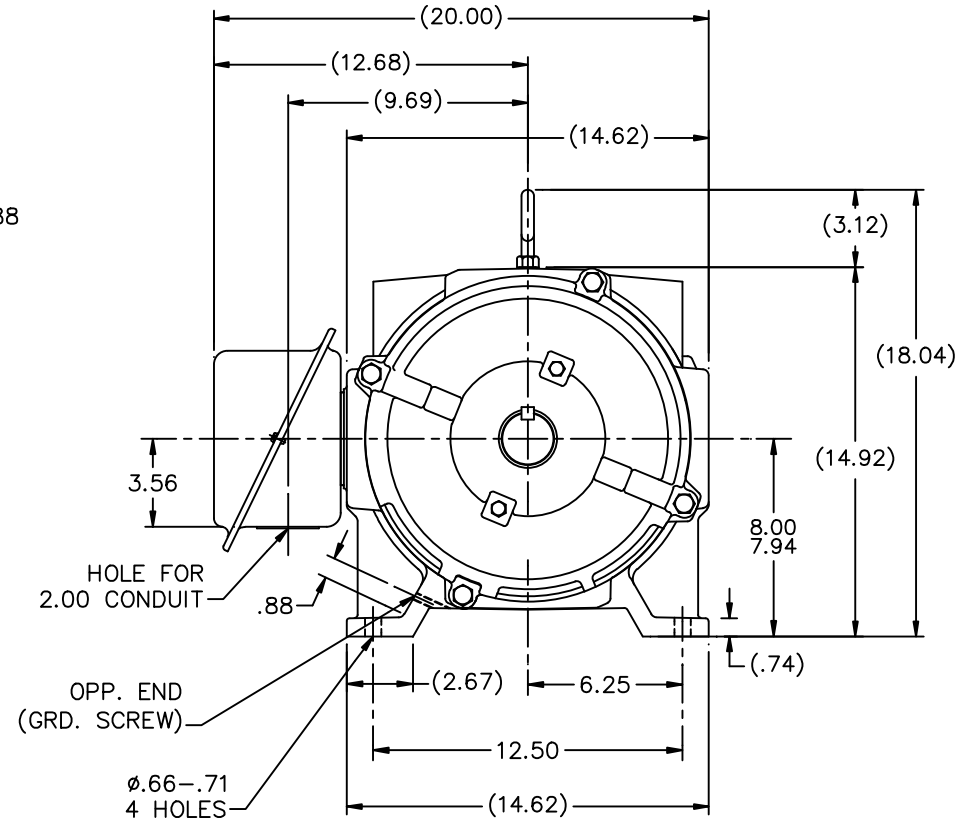
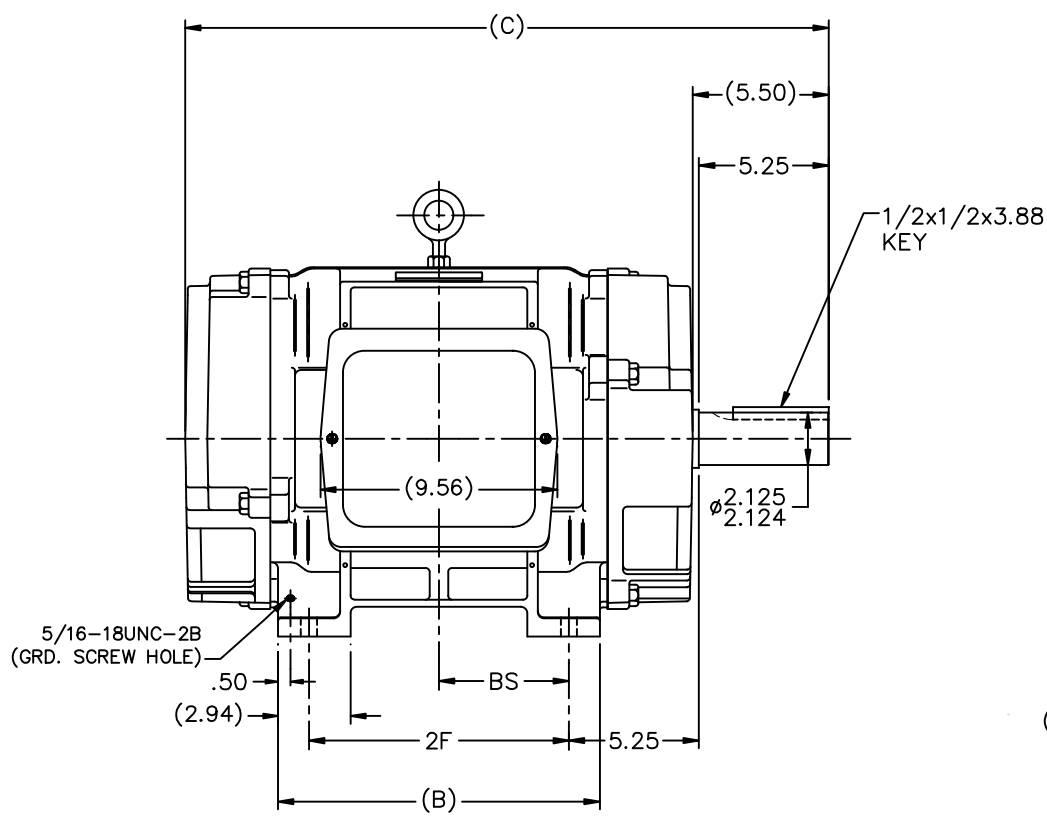


Nameplate Specifications

Phase	3	Output HP	40 & 30 Hp
Output KW	30.0 & 22.4 kW	Voltage	230/460 & 190/380 V
Speed	1770 & 1475 rpm	Service Factor	1.15 & 1.15
Frame	324T	Enclosure	Drip Proof
Thermal Protection	No Protection	Efficiency	93 & 93 %
Ambient Temperature	40 °C	Frequency	60 & 50 Hz
Current	97/48.5 & 88/44 A	Power Factor	82.5
Duty	Continuous	Insulation Class	F
Design Code	B	KVA Code	F
Drive End Bearing Size	312	Opp Drive End Bearing Size	311
UL	No	CSA	Y
CE	Y	IP Code	12
Number of Speeds	1		

Technical Specifications

Electrical Type	Squirrel Cage Induction Run	Starting Method	Wye Start Delta Run
Poles	4	Rotation	Reversible
Resistance Main	.165 Ohms	Mounting	Rigid Base
Motor Orientation	Horizontal	Drive End Bearing	Ball
Opp Drive End Bearing	Ball	Frame Material	Cast Iron
Shaft Type	T	Overall Length	26.00 in
Frame Length	13.62 in	Shaft Diameter	2.125 in
Shaft Extension	5.25 in	Assembly/Box Mounting	F1/F2 CAPABLE
Outline Drawing	B-SS200078LN-1362	Connection Drawing	A-EE7358-LN



- NOTES:
 1. BOX CAN BE ROTATED IN 90° STEPS
 2. BOX CAN BE MOUNTED ON OPPOSITE SIDE BY REMOVING BRACKETS AND TURNING FRAME 180°
 3. NAMEPLATE TO BE READ FROM CONDUIT BOX SIDE OF MOTOR

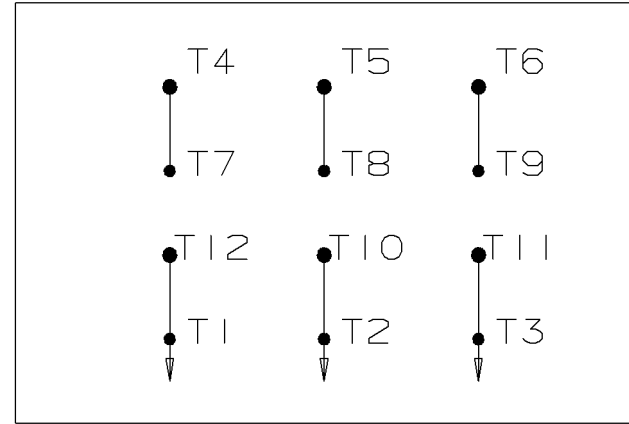
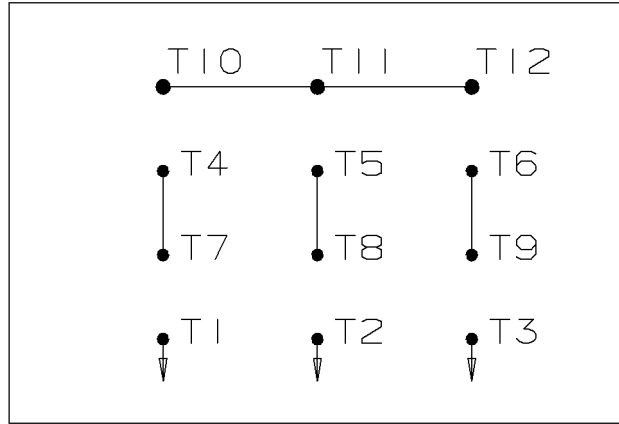
1362	324TC	26.00	13.00	10.50	---	---	5.25	
1512	326TC	27.50	14.50	12.00	---	---	6.00	
DASH	FRAME	C	AG	B	2F	2FF	2FFF	BS

		TOLERANCES UNLESS SPECIFIED		Lincoln MOTOR		DRAWN CAV 07-08-2002	
		DEC. INCHES				CHK ML 07-08-2002	
		.X ±.1				APPD DD 07-08-2002	
		.XX ±.03		TITLE OUTLINE - DR.PR. - CAST IRON		SCALE 1=5	
2		REPLACED C'FACE BRKT W/STD. BRKT MU9867B		MSG 06-07-2011		320TC FR. - BB - TS - D.E.V.	
1		NEW DRAWING MU42484		CAV 07-08-2002		REF	
NO.		REVISION		BY & DATE		FMF	
		THIS DRAWING IN DESIGN AND DETAIL IS OUR PROPERTY AND MUST NOT BE USED EXCEPT IN CONNECTION WITH OUR WORK ALL RIGHTS OF DESIGN AND INVENTION ARE RESERVED THIS IS AN ELECTRONICALLY GENERATED DOCUMENT - DO NOT SCALE THIS PRINT		RFP		PREV	
				CAD FILE SS200078LN		SIZE DRAWING NO. PAGE OF REV.	
				DIST LB		B SS200078LN 1	

WYE START

HIGH VOLTAGE

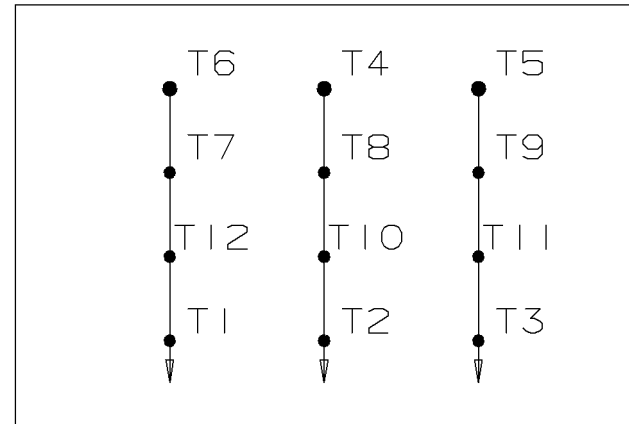
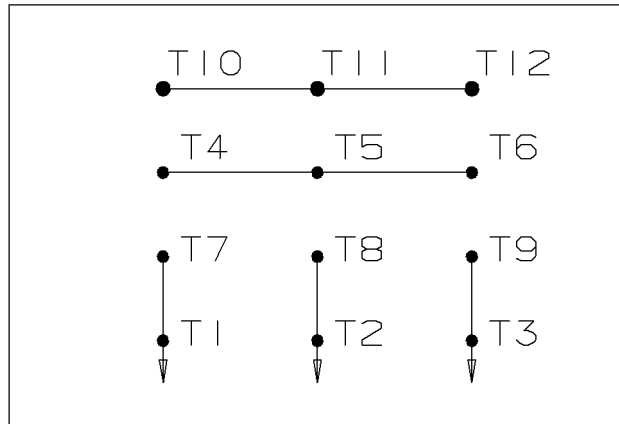
DELTA RUN



WYE START

LOW VOLTAGE

DELTA RUN



4/2 CKTY Δ

					<input checked="" type="checkbox"/> UNLESS OTHERWISE SPECIFIED DIMENSIONS ARE IN INCHES TOL. ON XX± .02 XXX± .005 XXXX± .0005 ANGLES± 7'30"		
					MAX. SURFACE ROUGHNESS UNLESS OTHERWISE NOTED FINISH MATERIAL	DRAWN BY DRS CHKD BY ML APPD BY TB	12-07-1999 12-07-1999 12-07-1999
1	12-07-1999	NEW DRAWING	DRS	PART NAME CONNECTION DIAGRAM			DRWG NO A-EE7358-LN
REV	DATE	CHANGE	NAME	PURCHASED			CADD FILE NO. EE7358-LN

Data Sheet

Date: 1/30/2018

LM80116



Data @ **460 V**

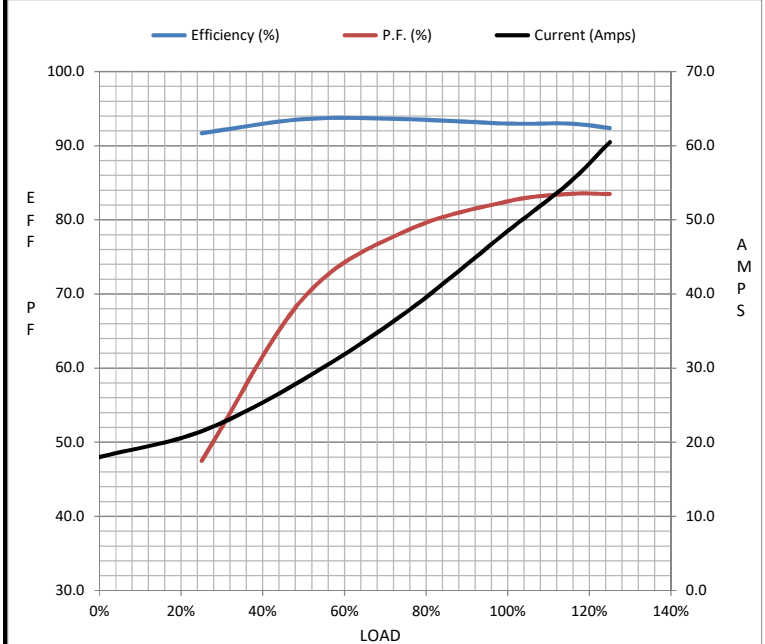
Motor Load Data

Load	0%	25%	50%	75%	100%	115%	125%	LR
Current (Amps)	18.0	21.5	28.5	37.5	48.5	55.0	60.5	275
Torque (ft-lb)	0.00	29.0	58.5	88.5	119	134	149	205
RPM	1800	1792	1785	1778	1770	1.765	1758	0
Efficiency (%)		91.7	93.6	93.6	93.0	93.0	92.4	
P.F. (%)	3.5	47.5	69.5	78.5	82.5	83.5	83.5	34.0

Motor Speed Data

	LR	Pull-Up	BD	Rated	Idle
Speed (RPM)	0	900	1650	1770	1800
Current (Amps)	275	240	170	48.5	18.0
Torque (ft-lb)	205	180	305	119	0.00

Information Block				
HP	40.0			
Sync. RPM	1800			
Frame	324			
Enclosure	DP			
Construction	TDP			
Voltage	230/460#190/380 V			
Frequency	60 Hz			
Design	B			
LR Code letter	F			
Service Factor	1.15			
Temp Rise @ FL	40 °C			
Duty	CONT			
Ambient	40 °C			
Elevation	1,000 feet			
Rotor/Shaft wk ²	4.7 Lb-Ft ²			
Ref Wdg	K2864252 NONE			
Sound Pressure @ 1M	75 dBA			
VFD Rating	NONE			
Outline Dwg	B-SS200078LN-1362			
Conn. Diag	A-EE7358-LN			
Additional Specifications:				
0				
0				
EQUIV CKT (OHMS / PHASE)				
R1	R2	X1	X2	Xm
0.1100	0.0960	0.5930	0.8010	14.7900



Speed - Torque Curve

