

PRODUCT INFORMATION PACKET



Model No: LM80067
Catalog No: LM80067
15 HP Fire Pump Motor, 3 phase, 3600 RPM, 230/460 V, 254T Frame, TEFC
Fire Pump Motors



Regal and Leeson are trademarks of Regal Rexnord Corporation or one of its affiliated companies.
©2021 Regal Rexnord Corporation, All Rights Reserved. MC017097E





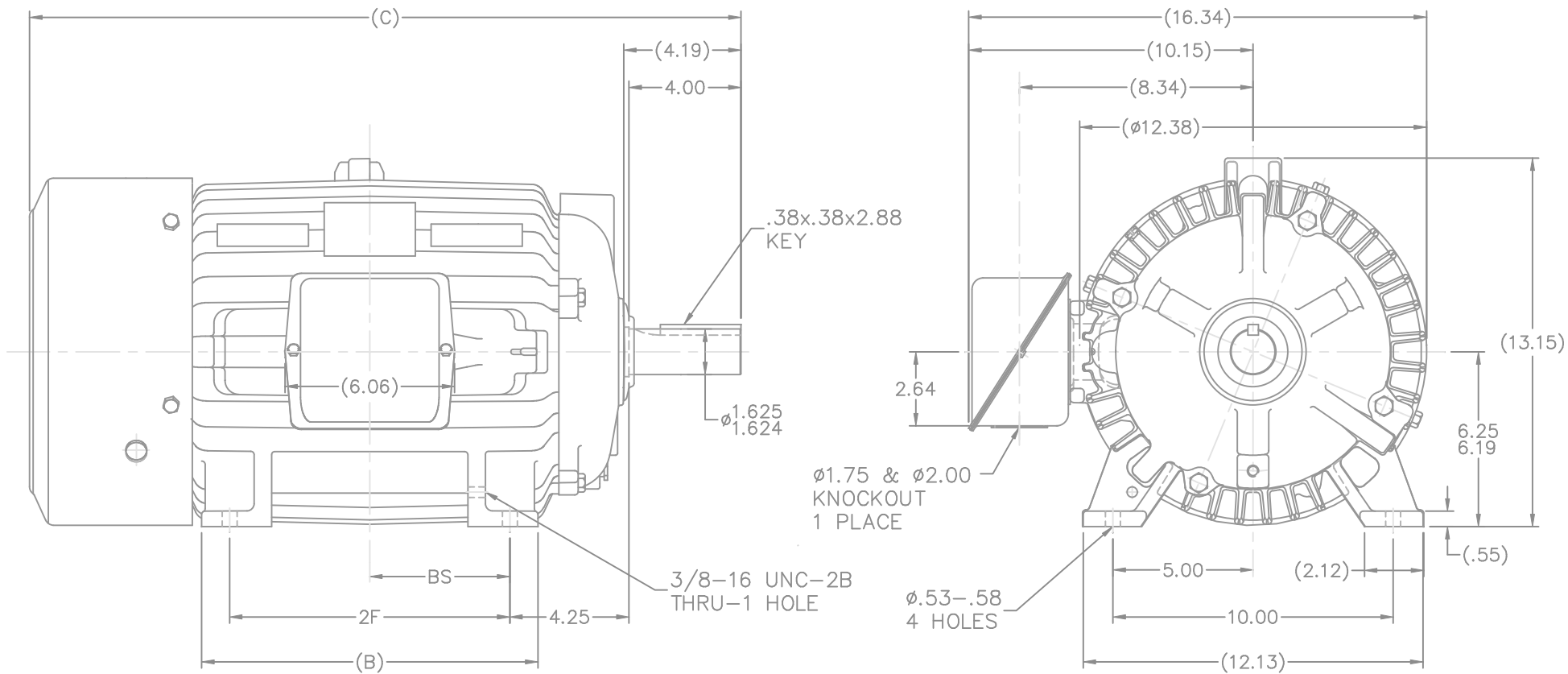
Nameplate Specifications

Output HP	15 Hp	Output KW	11.2 kW
Frequency	60 Hz	Voltage	230/460 V
Current	35.0/17.5 A	Speed	3520 rpm
Service Factor	1.15	Phase	3
Efficiency	90.2 %	Power Factor	87
Duty	Continuous	Insulation Class	F
Design Code	B	KVA Code	G
Frame	254T	Enclosure	Totally Enclosed Fan Cooled
Thermal Protection	No	Ambient Temperature	40 °C
Drive End Bearing Size	6309	Opp Drive End Bearing Size	6207
UL	No	CSA	Y
CE	Y	IP Code	43
Number of Speeds	1		

Technical Specifications

Electrical Type	Squirrel Cage Induction Run	Starting Method	Across The Line
Poles	2	Rotation	Reversible
Resistance Main	.63 Ohms	Mounting	Rigid Base
Motor Orientation	Horizontal	Drive End Bearing	Ball
Opp Drive End Bearing	Ball	Frame Material	Cast Iron
Shaft Type	T	Overall Length	23.69 in
Frame Length	11.75 in	Shaft Diameter	1.625 in
Shaft Extension	4 in	Assembly/Box Mounting	F1/F2 CAPABLE
Outline Drawing	B-SS203005LN-1175	Connection Drawing	A-EE7308K-LN

This is an uncontrolled document once printed or downloaded and is subject to change without notice. Date Created:10/07/2021



NOTES:

1. C.BOX CAN BE ROTATED IN 90° STEPS
2. C.BOX CAN BE MOUNTED ON OPPOSITE SIDE BY REMOVING BRACKETS AND TURNING FRAME 180°
3. NAMEPLATES TO BE READ FROM CONDUIT BOX SIDE OF MOTOR

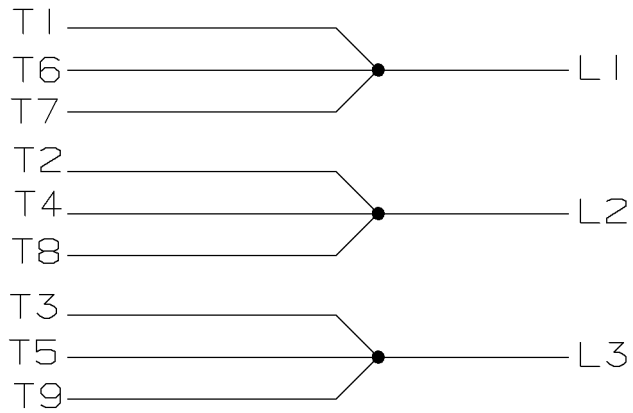
(B-SS203000)

DASH	FRAME	B	C	2F	BS
1175	254T	10.25	23.69	8.25	4.12
1350	256T	12.00	25.44	10.00	5.00

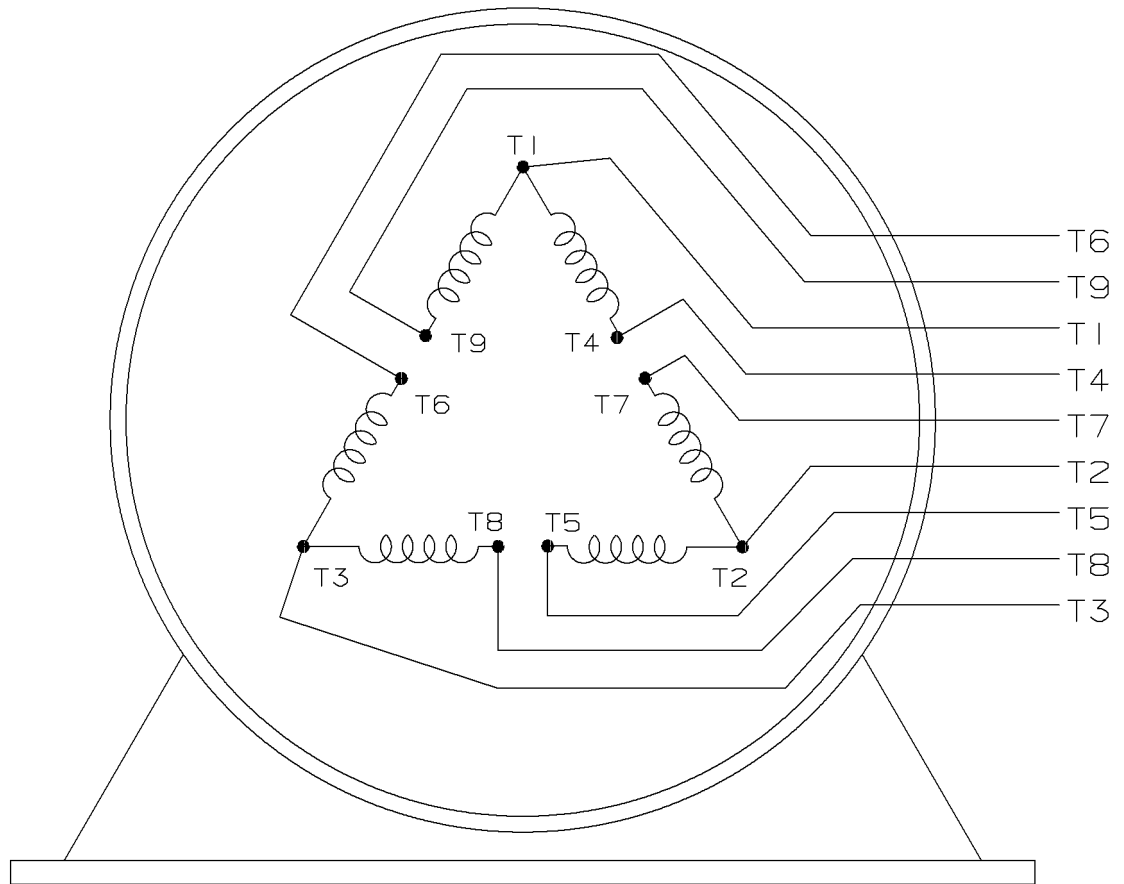
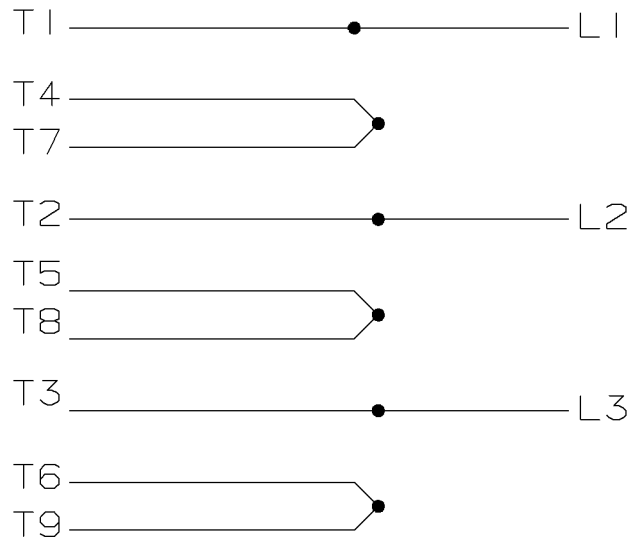
		TOLERANCES UNLESS SPECIFIED		Lincoln MOTORS	DRAWN NJS 09-24-1999		
		DEC.	INCHES		CHK	ML 09-27-1999	
		.X	±.1			APPD TB 09-27-1999	
		.XX	±.03			SCALE 9=32	
2	OPEN C.N. 28426	RWR	01-10-2005	ML	.XXX ±.005	TITLE OUTLINE - TEFC 250T FR. -BB - TS - STD.	
1	NEW DRAWING	NJS	09-27-1999	ML	.XXXX ±.0005	REF B-SS203005	
NO.	REVISION	BY & DATE		CHK	ANG	MAT'L	
				RFP	09-27-1999	FINISH	
THIS DRAWING IN DESIGN AND DETAIL IS OUR PROPERTY AND MUST NOT BE USED EXCEPT IN CONNECTION WITH OUR WORK ALL RIGHTS OF DESIGN AND INVENTION ARE RESERVED THIS IS AN ELECTRONICALLY GENERATED DOCUMENT - DO NOT SCALE THIS PRINT				DIST	LB	CAD FILE ss203005LN	
						SIZE B	DRAWING NO. SS203005LN
						PAGE 1 OF 1	REV. 2

LOW VOLTAGE

A-EE7308K-LN



HIGH VOLTAGE



					<input checked="" type="checkbox"/> UNLESS OTHERWISE SPECIFIED DIMENSIONS ARE IN INCHES TOL. ON XX±.02 XXX±.005 XXXX±.0005 ANGLES± 7'30"			
2	08-09-1999	RE-ISSUE, ADDED '-' TO PART NUMBER	BLR		MAX. SURFACE ROUGHNESS UNLESS OTHERWISE NOTED FINISH MATERIAL		DRAWN BY TRB	07-15-1999
1	06-18-1999	NEW DRAWING	TRB			CHKD BY ML	07-15-1999	
				PART NAME CONNECTION DIAGRAM DELTA CONN. - 3Ø - 9 LEADS			APPD BY GK	07-20-1999
REV	DATE	CHANGE	NAME	PURCHASED			CADD FILE NO.	EE7308KLN



1051 CHEYENNE AVE.
GRAFTON, WI 53024
PH. 262-277-8810

DATA VOLTS: 460

CERTIFICATION DATA SHEET

CONN. DIAGRAM: A-EE7308K-LN
OUTLINE: B-SS203005LN-1175
WINDING: K2152215

CAT #: LM80067

NONE 1

TYPICAL MOTOR PERFORMANCE DATA

HP	KW	SYNC RPM	FL RPM	FRAME	ENCLOSURE	TYPE	KVA CODE	DESIGN
15	11.2	3600	3520	254T	TEFC	TFP	G	B

PH	HZ	VOLTS	AMPS	START TYPE	DUTY	INSL	S.F.	AMB	ELEV.
3	60	230/460	35/17.5	ACROSS THE LINE	CONT	F	1.15	40	3300

F.L. EFF	90.2	3/4 LD EFF	90.2	1/2 LD EFF	89.5	GTD EFF	ELECT. TYPE
F.L. PF	87.0	3/4 LD PF	84.0	1/2 LD PF	77.0	88.5	SQ CAGE IND RUN

F.L. TORQUE	LR AMPS @ 460 V	L.R. TORQUE	B.D. TORQUE	F.L. RISE (° C)
22.5 LB-FT	111	43.0 LB-FT 191%	67.0 LB-FT 298%	55

PRESSURE @ 3	SOUND	POWER	ROTOR WK²	MAX. LOAD WK²	SAFE STALL TIME	STARTS/HOUR	MOTOR WGT
72 dBA	81 dBA		0.60 LB-FT²	16 LB-FT²	20 SEC.	2	250 LB.

***** SUPPLEMENTAL INFORMATION *****

DE BRACKET TYPE	ODE BRACKET TYPE	MOUNT TYPE	MOTOR ORIENTATION	SEVERE DUTY	HAZARDOUS LOCATION	DRIP COVER	SCREENS	PAINT
STANDARD	STANDARD	RIGID	HORIZONTAL	NO	NONE	NO	NONE	WATTSAVER

BEARINGS		GREASE	SHAFT TYPE	SPECIAL DE	SPECIAL ODE	SHAFT MATERIAL	FRAME MATERIAL
DE	ODE	POLYREX EM	T	NONE	NONE	1045 HOT ROLLED (C-204)	CAST IRON
BALL	BALL						
6309	6207						

THERMOSTATS	PROTECTORS	WDG RTD's	BRG RTD's	THERMISTORS	CONTROL	SPACE HEATERS
NONE	NOT	NONE	NONE	NONE	FALSE	NA

R1 (ohms/ph)	R2 (ohms/ph)	X1 (ohms/ph)	X2 (ohms/ph)	Xm (ohms/ph)	VIBRATION (in/sec)	FLOAT
0.438	0.329	1.389	1.249	45.171	0.150	ODE

* N O T E S *	INVERTER TORQUE: NONE	
	INV. HP SPEED RANGE: NONE	
	ENCODER: NONE	
	NONE	NONE PPR
	NONE	

DATE: 8/31/2018	BRAKE: NONE	
	NONE	NONE
	FT-LB: NA	
	VOLTAGE: NONE	HZ:
UL: NONE		

Data Sheet

Date: 8/31/2018

LM80067



Data @ **460 V**

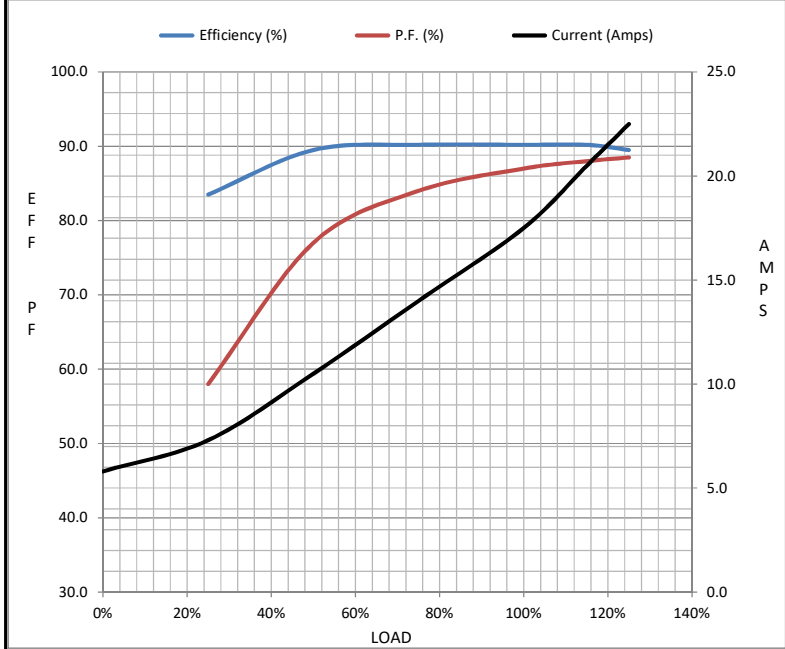
Motor Load Data

Load	0%	25%	50%	75%	100%	115%	125%	LR
Current (Amps)	5.8	7.3	10.5	14.0	17.5	20.5	22.5	111
Torque (ft-lb)	0.00	5.5	11.0	16.8	22.5	26.0	28.0	43.0
RPM	3600	3578	3560	3535	3520	3,500	3490	0
Efficiency (%)		83.5	89.5	90.2	90.2	90.2	89.5	
P.F. (%)	10.5	58.0	77.0	84.0	87.0	88.0	88.5	42.0

Motor Speed Data

	LR	Pull-Up	BD	Rated	Idle
Speed (RPM)	0	1800	3170	3520	3600
Current (Amps)	111	100	71.0	17.5	5.8
Torque (ft-lb)	43.0	39.0	67.0	22.5	0.00

Information Block				
HP	15.0			
Sync. RPM	3600			
Frame	254			
Enclosure	TEFC			
Construction	TFP			
Voltage	230/460 V			
Frequency	60 Hz			
Design	A			
LR Code letter	G			
Service Factor	1.15			
Temp Rise @ FL	55 ° C			
Duty	CONT			
Ambient	40 ° C			
Elevation	1,000 feet			
Rotor/Shaft wk ²	0.60 Lb-Ft ²			
Ref Wdg	K2152215 NONE			
Sound Pressure @ 1M	72 dBA			
VFD Rating	NONE			
Outline Dwg	B-SS203005LN-1175			
Conn. Diag	A-EE7308K-LN			
Additional Specifications:				
0				
0				
EQUIV CKT (OHMS / PHASE)				
R1	R2	X1	X2	Xm
0.4380	0.3290	1.3890	1.2490	45.1710



Speed - Torque Curve

