

PRODUCT INFORMATION PACKET



Model No: LM62029

Catalog No: LM62029

DISOLETE - REPLACED BY 199060.00 - ..15HP..1800RPM.254TC.TEFC.230/460V.3PH.60HZ.CONT.40C.1.15SF.RIG
ID-C.....

Regal and Leeson are trademarks of Regal Rexnord Corporation or one of its affiliated companies.

©2023 Regal Rexnord Corporation, All Rights Reserved. MC017097E





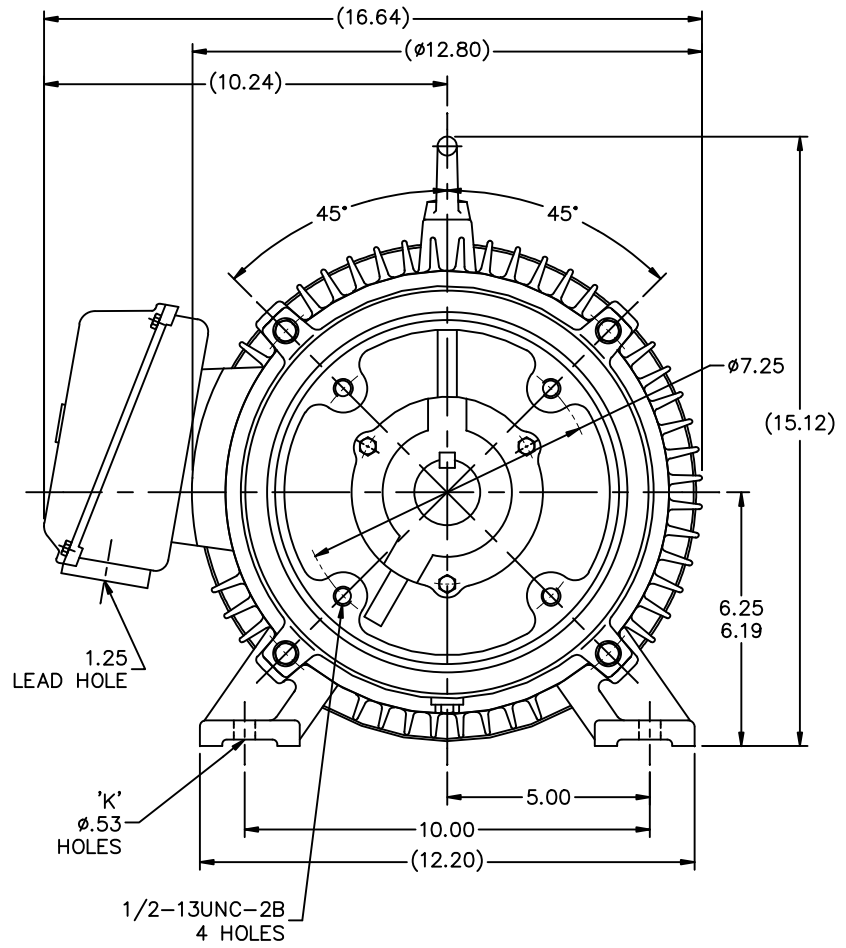
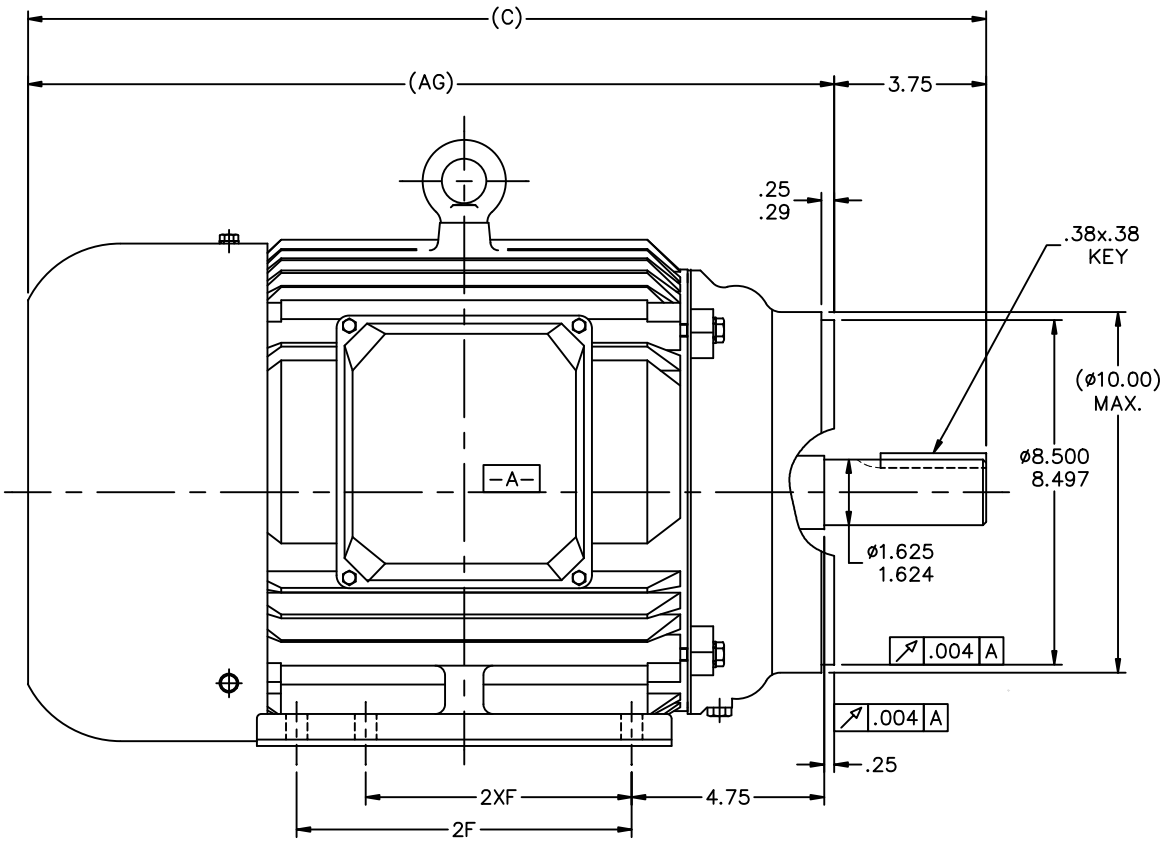
Nameplate Specifications

Phase	3	Output HP	15 & 10 Hp
Output KW	11.2 & 7.5 kW	Voltage	208-230/460 & 190/380 V
Speed	1765 & 1465 rpm	Service Factor	1.15 & 1.15
Frame	254TC	Enclosure	Totally Enclosed Fan Cooled
Thermal Protection	No Protection	Efficiency	92.4 & 92.4 %
Ambient Temperature	40 °C	Frequency	60 & 50 Hz
Current	40-36/18 & 30.5/15.25 A	Power Factor	84
Duty	Continuous	Insulation Class	F
Design Code	B	KVA Code	H
Drive End Bearing Size	6309	Opp Drive End Bearing Size	6308
UL	Recognized	CSA	Y
CE	Y	IP Code	43
Number of Speeds	1		

Technical Specifications

Electrical Type	Squirrel Cage Induction Run	Starting Method	Across The Line
Poles	4	Rotation	Reversible
Mounting	Rigid Base	Motor Orientation	Horizontal
Drive End Bearing	Ball	Opp Drive End Bearing	Ball
Frame Material	Cast Iron	Shaft Type	T
Assembly/Box Mounting	F1/F2 CAPABLE		
Outline Drawing	SS622044RB	Connection Drawing	004172.03

This is an uncontrolled document once printed or downloaded and is subject to change without notice. Date Created:06/22/2023



NOT DRAWN TO SCALE

----	N254TC-2	23.75	20.00	----	8.26	----	4	----
----	N254TC-4	23.75	20.00	----	8.26	----	4	----
----	N256TC-2	25.48	21.73	----	10.00	8.26	6	----
----	N256TC-4	25.48	21.73	----	10.00	8.26	6	----
DASH	FRAME	C	AG	B	2F	2XF	K	BS

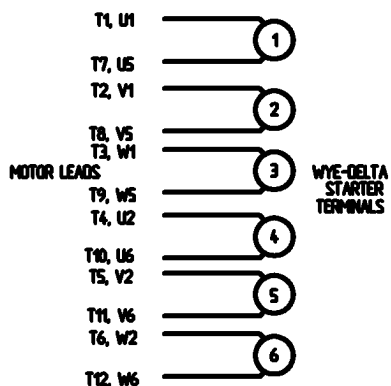
		TOLERANCES UNLESS SPECIFIED		DRAWN MSG 08-11-2005	
		DEC.	INCHES	CHK ML 08-12-2005	
		.X	±.1	APPD LMC 08-23-2005	
		.XX	±.03	SCALE 3=8	
		.XXX	±.005	REF	
		.XXXX	±.0005	FMF	
NO.	REVISION	BY & DATE	CHK	ANG	±7'30"
THIS DRAWING IN DESIGN AND DETAIL IS OUR PROPERTY AND MUST NOT BE USED EXCEPT IN CONNECTION WITH OUR WORK ALL RIGHTS OF DESIGN AND INVENTION ARE RESERVED THIS IS AN ELECTRONICALLY GENERATED DOCUMENT - DO NOT SCALE THIS PRINT			RFP	FINISH	PREV 250013670-3700
			CAD FILE	ss622044RB	SIZE DRAWING NO. PAGE OF REV.
			DIST	LB	B SS622044RB



TITLE OUTLINE
254/6TC FRAME - C'FACE

WYE - DELTA STARTING USEABLE ON 2,4 AND 6 POLE MOTORS.

LOW VOLTAGE CONNECTION

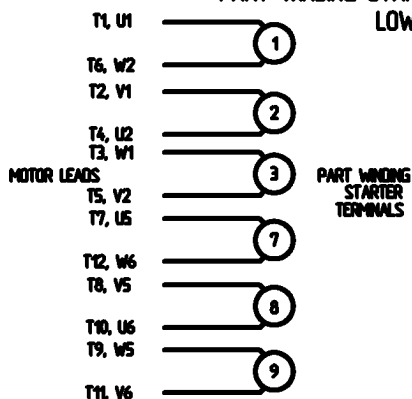


HIGH VOLTAGE CONNECTION



REFER TO THE WYE-DELTA STARTER CONNECTION INSTRUCTIONS FOR PROPER CONNECTION OF POWER LINES TO STARTER.

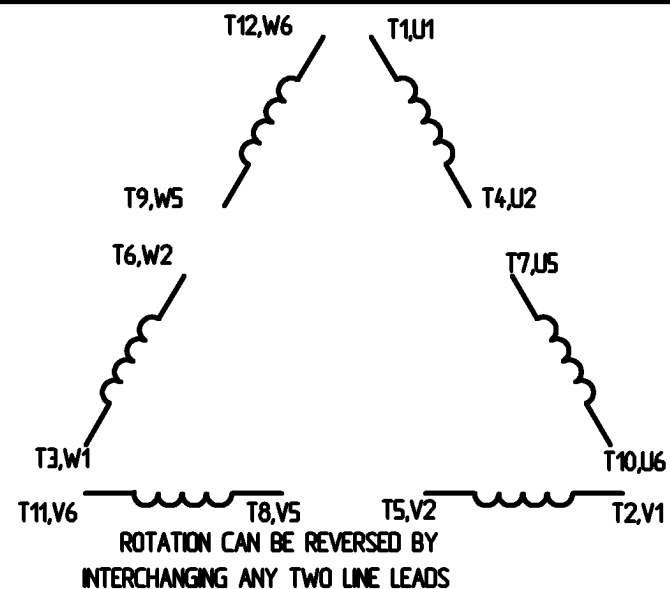
PART WINDING START USABLE ON 4 & 6 POLE MOTORS
LOW VOLTAGE CONNECTION ONLY



REFER TO THE PART WINDING STARTER INSTRUCTIONS FOR PROPER CONNECTION OF POWER LINES TO STARTER.

REFER TO THE CUTLER - HAMMER OR EQUIV. FOR PROPER SELECTION OF OVERLOAD HEATER COILS.

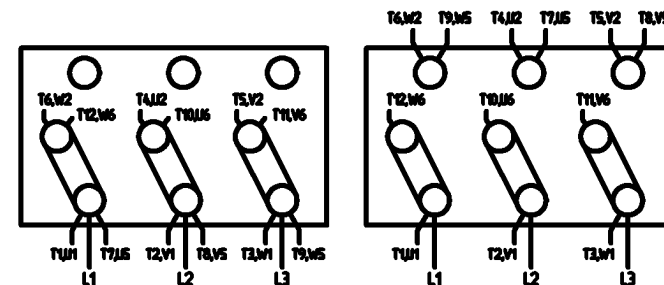
LINE LEADS



12 LEAD DELTA CONNECTION ACROSS THE LINE START
(FOR Y START DELTA RUN, REMOVE THE JUMPERS)

LOW VOLTAGE
MUST BE REWIRED AS SHOWN

HIGH VOLTAGE
FACTORY WIRED FOR HIGH VOLTAGE AS SHOWN



		TOLERANCES UNLESS SPECIFIED			TITLE DELTA - WYE CONNECTION DIAGRAM IEC CAST IRON MOTORS	DRAWN C/W 08/28/02		
		DEC.	INCHES			CHK		
		X	+ 1			APPO		
		XX	+ .01			SCALE	1:1	
		XXX	+ .005			REF		
		XXXX	+ .0005	MAT'L	FMF			
NO.	REVISION	BY & DATE	CHK	ANG	FINISH	PREV		
THIS DRAWING IN DESIGN AND DETAIL IS OUR PROPERTY AND MUST NOT BE USED EXCEPT IN CONNECTION WITH OUR WORK ALL RIGHTS OF DESIGN AND INVENTION ARE RESERVED THIS IS AN ELECTRONICALLY GENERATED DOCUMENT - DO NOT SCALE THIS PRINT			RFP	CAD FILE	00417203	SIZE	DRAWING NO.	REV.
			DST			A	004172-03	

ERROR: syntaxerror
OFFENDING COMMAND: --nostringval--

STACK:

/CB
-dictionary-
/Pscript_WinNT_Compat
-dictionary-