

PRODUCT INFORMATION PACKET



Model No: LM62026

Catalog No: LM62026

..10HP..1800RPM.215TC.TEFC.230/460V.3PH.60HZ.CONT.40C.1.15SF.RIGID-C.....

Regal and Leeson are trademarks of Regal Rexnord Corporation or one of its affiliated companies.

©2023 Regal Rexnord Corporation, All Rights Reserved. MC017097E





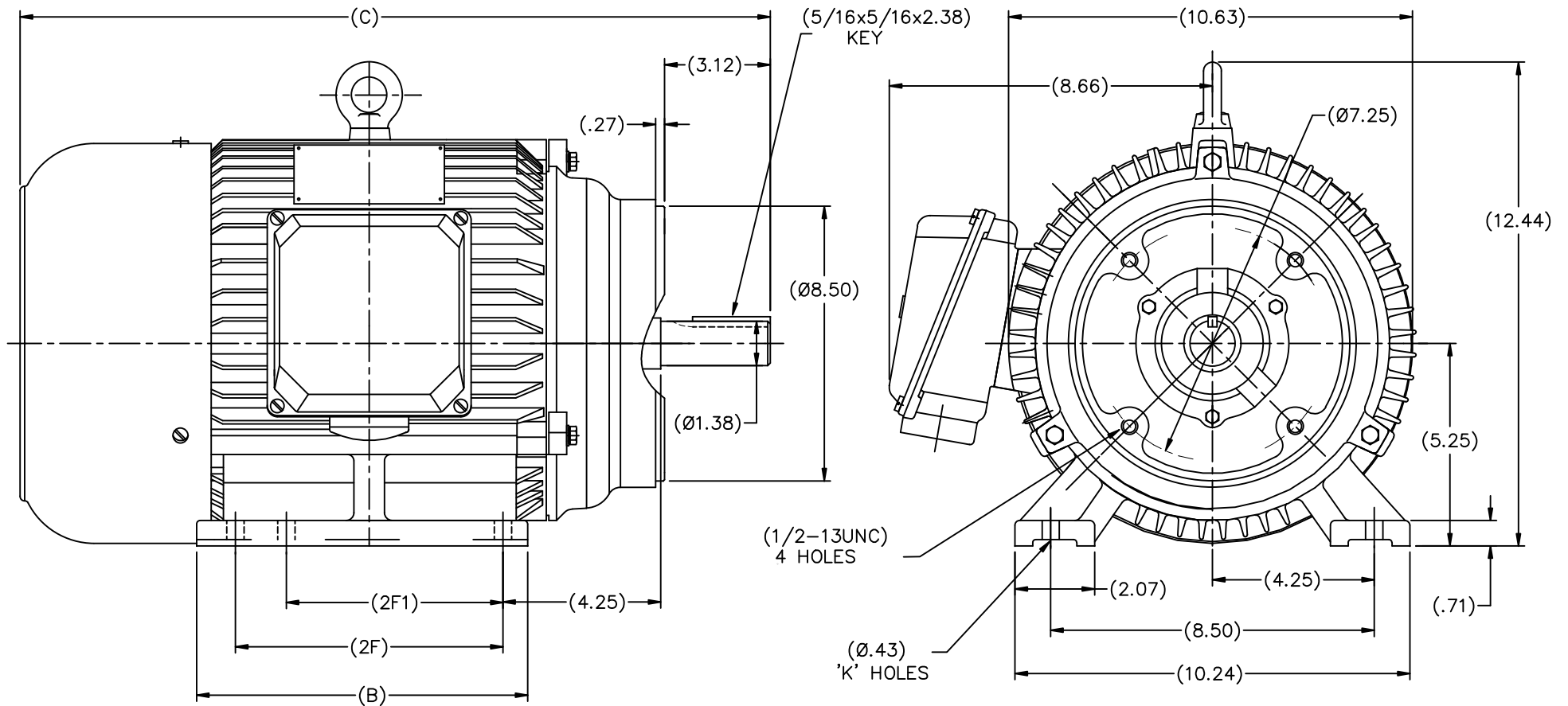
Nameplate Specifications

Phase	3	Output HP	10 & 7.50 Hp
Output KW	7.5 & 5.6 kW	Voltage	208-230/460 & 190/380 V
Speed	1760 & 1465 rpm	Service Factor	1.15 & 1.15
Frame	215TC	Enclosure	Totally Enclosed Fan Cooled
Thermal Protection	No Protection	Efficiency	91.7 & 91 %
Ambient Temperature	40 °C	Frequency	60 & 50 Hz
Current	27-25/12.5 & 23/11.5 A	Power Factor	81.6
Duty	Continuous	Insulation Class	F
Design Code	B	KVA Code	H
Drive End Bearing Size	6308	Opp Drive End Bearing Size	6306
UL	Recognized	CSA	Y
CE	Y	IP Code	43
Number of Speeds	1		

Technical Specifications

Electrical Type	Squirrel Cage Inverter Rated	Starting Method	Line Or Inverter
Poles	4	Rotation	Reversible
Resistance Main	.216 Ohms	Mounting	Rigid Base
Motor Orientation	Horizontal	Drive End Bearing	Ball
Opp Drive End Bearing	Ball	Frame Material	Cast Iron
Shaft Type	T	Assembly/Box Mounting	F1/F2 CAPABLE
Inverter Load	CONSTANT 10:1		
Outline Drawing	SS622294RB	Connection Drawing	00501010LN

This is an uncontrolled document once printed or downloaded and is subject to change without notice. Date Created:06/23/2023



FRAME	B	C	2F	2F1	K
N213TC-2W2	7.32	18.94	5.50		4
N215TC-4W2	8.82	20.35	7.00	5.50	6
N213TC-4W2	7.32	18.94	5.50		4
N215TC-4W2	8.82	20.35	7.00	5.50	6
N215TC-6W2	8.82	20.35	7.00	5.50	6

DRAWING NOT TO SCALE

TOLERANCES UNLESS SPECIFIED		DEC. INCHES		TITLE		DRAWN MOL 03-07-2011	
.X		±.1		REGAL-BELOIT CORPORATION		CHK MOL 03-07-2011	
.XX		±.03		OUTLINE		APPD SB 03-07-2011	
.XXX		±.005		N210TC FR-2,4,6-W2- C'FACE - TEFC		SCALE 1=4	
.XXX		±.0005		MAT'L		REF	
NO.		REVISION		BY & DATE		FMF	
CHK		ANG		FINISH		PREV	
RFP		CAD FILE		SS622294RB		SIZE	
DIST		B		DRAWING NO.		PAGE OF	
						SS622294RB	
						REV.	