

PRODUCT INFORMATION PACKET



Model No: LM60062

Catalog No: LM60062

..100HP..1800RPM.405T.TEFC.230/460V.3PH.60HZ.CONT.40C.1.15SF.RIGID.....

Regal and Leeson are trademarks of Regal Rexnord Corporation or one of its affiliated companies.

©2023 Regal Rexnord Corporation, All Rights Reserved. MC017097E





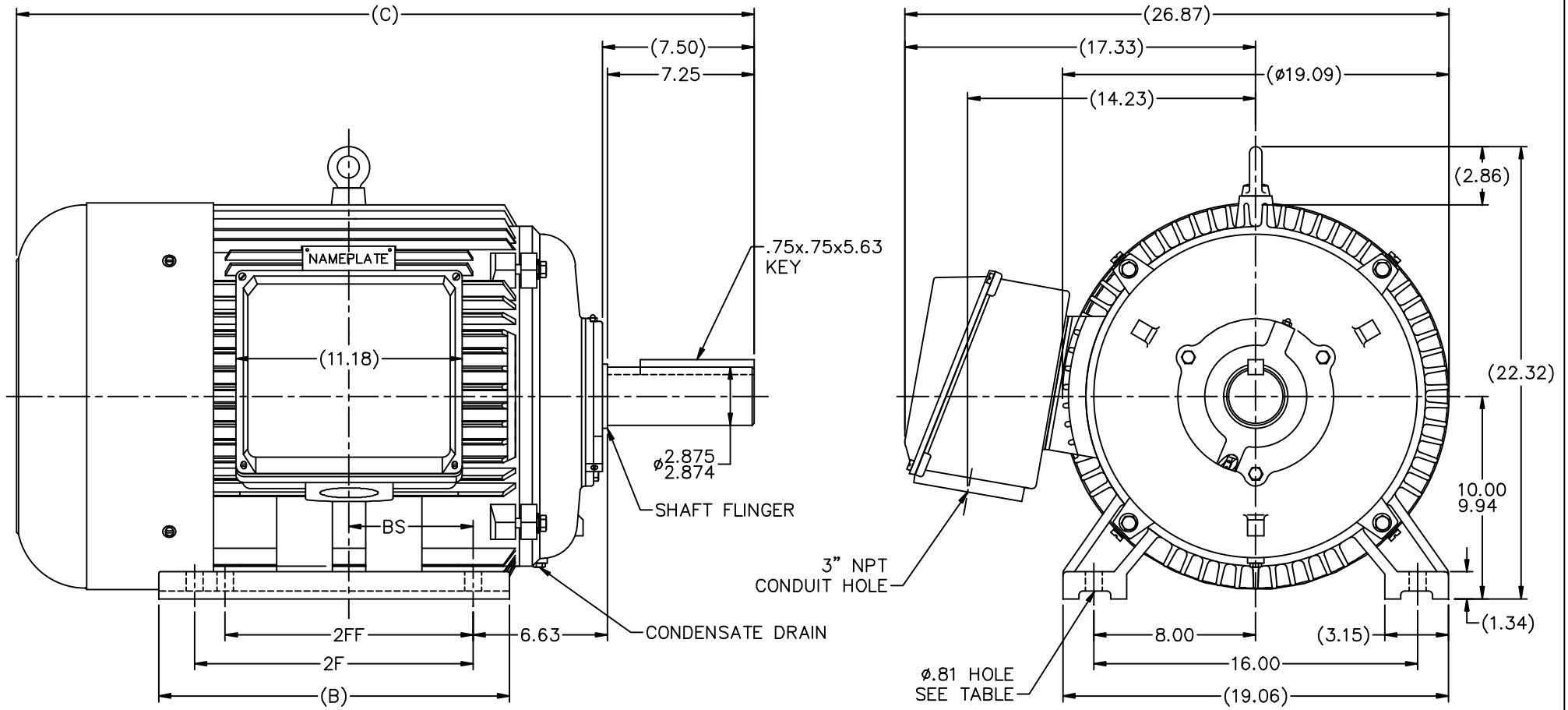
Nameplate Specifications


Phase	3	Output HP	100 & 75 Hp
Output KW	75.0 & 56.0 kW	Voltage	230/460 & 190/380 V
Speed	1785 & 1486 rpm	Service Factor	1.15 & 1.15
Frame	405T	Enclosure	Totally Enclosed Fan Cooled
Thermal Protection	No Protection	Efficiency	95.4 & 95.4 %
Ambient Temperature	40 °C	Frequency	60 & 50 Hz
Current	226/113 & 200/100 A	Power Factor	87
Duty	Continuous	Insulation Class	F
Design Code	B	KVA Code	G
Drive End Bearing Size	6316	Opp Drive End Bearing Size	6314
UL	Recognized	CSA	Y
CE	Y	IP Code	43
Number of Speeds	1		

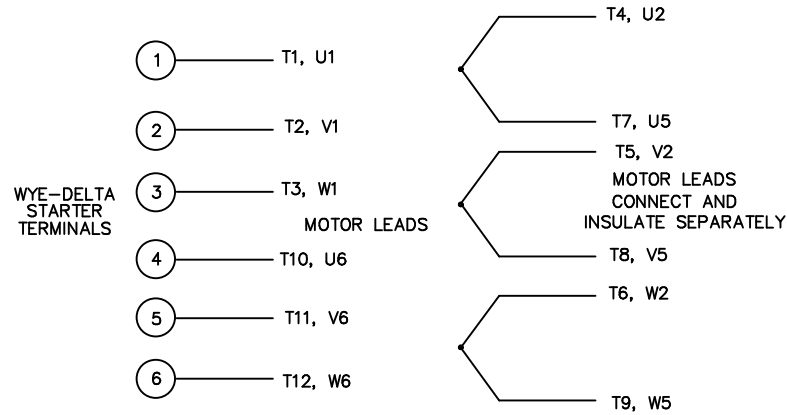
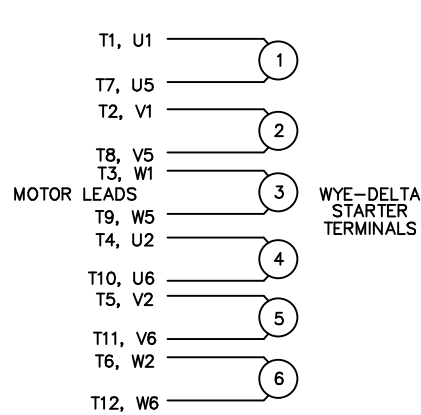
Technical Specifications

Electrical Type	Squirrel Cage Inverter Rated	Starting Method	Wye Start Delta Run Or Inverter
Poles	4	Rotation	Reversible
Resistance Main	.045 Ohms	Mounting	Rigid Base
Motor Orientation	Horizontal	Drive End Bearing	Ball
Opp Drive End Bearing	Ball	Frame Material	Cast Iron
Shaft Type	T	Assembly/Box Mounting	F1/F2 CAPABLE
Inverter Load	CONSTANT 2:1		
Outline Drawing	16954560LN	Connection Drawing	004172.03LN

This is an uncontrolled document once printed or downloaded and is subject to change without notice. Date Created:06/23/2023

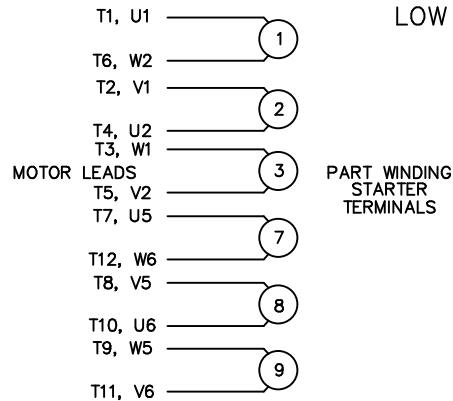


								TOLERANCES UNLESS SPECIFIED						DRAWN CTO 08-21-2002														
								DEC.		INCHES					CHK ML 08-29-2002													
								.X		±.1					APPD SB 08-30-2002													
								.XX		±.03		TITLE OUTLINE - RIGID 400T FR. - TEFC			SCALE 1=4.75													
								.XXX		±.005					REF													
								CTO 08-30-2002		SB .XXXX		±.0005		MAT'L			FMF											
								NO.		REVISION		BY & DATE		CHK ANG		FINISH		PREV										
								THIS DRAWING IN DESIGN AND DETAIL IS OUR PROPERTY AND MUST NOT BE USED EXCEPT IN CONNECTION WITH OUR WORK ALL RIGHTS OF DESIGN AND INVENTION ARE RESERVED THIS IS AN ELECTRONICALLY GENERATED DOCUMENT - DO NOT SCALE THIS PRINT										RFP		CAD FILE 16954560ln		SIZE						
																		DIST WA		B		DRAWING NO. PAGE OF		REV.				
																						169545-60LN		2				
1681	404T	36.42	15.83	12.25	-	5.39	4	2 CORRECTED FOOT MOUNTING HOLES DISCRPTION										MOL 10-21-2011		CTO 08-30-2002		SB .XXXX		±.0005		REF		
1831	405T	37.91	17.32	13.75	12.25	6.14	6	NEW DRAWING																		FMF		
																										PREV		
DASH	FRAME	C	B	2F	2FF	BS	HOLE QTY																					

WYE – DELTA STARTING USEABLE ON 2,4 AND 6 POLE MOTORS.LOW VOLTAGE CONNECTIONHIGH VOLTAGE CONNECTION

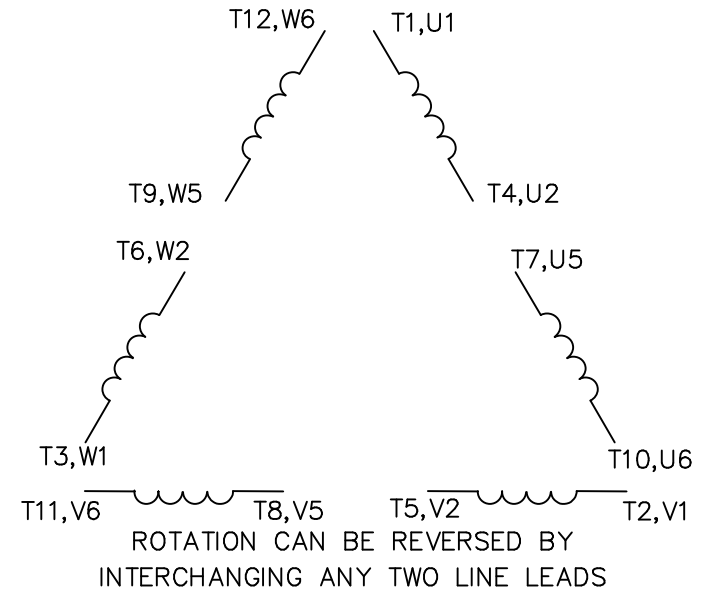
REFER TO THE WYE-DELTA STARTER CONNECTION INSTRUCTIONS FOR PROPER CONNECTION OF POWER LINES TO STARTER.

PART WINDING START USABLE ON 4 & 6 POLE MOTORS
LOW VOLTAGE CONNECTION ONLY



REFER TO THE PART WINDING STARTER INSTRUCTIONS FOR PROPER CONNECTION OF POWER LINES TO STARTER.

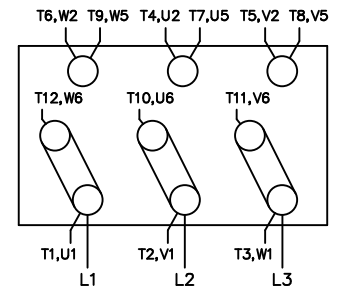
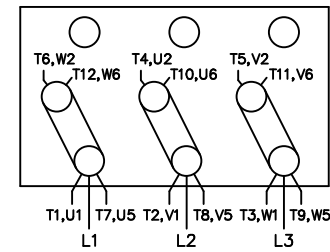
REFER TO THE CUTLER – HAMMER OR EQUIV. FOR PROPER SELECTION OF OVERLOAD HEATER COILS.

LINE LEADS

12 LEAD DELTA CONNECTION ACROSS THE LINE START
(FOR Y START DELTA RUN, REMOVE THE JUMPERS)

LOW VOLTAGE
(MUST BE REWIRED
AS SHOWN)

HIGH VOLTAGE
(FACTORY WIRED FOR HIGH
VOLTAGE AS SHOWN)



TOLERANCES
UNLESS SPECIFIED

DEC. INCHES

.X ±.1

.XX ±.02

.XXX ±.005

.XXXX ±.0005

ANG ±7'30"

Lincoln
MOTORS

TITLE DELTA – WYE CONNECTION DIAGRAM
IEC CAST IRON MOTORS

MAT'L.

FINISH

DRAWN RJW 09-12-2005

CHK ML 09-12-2005

APPD GK 09-12-2005

SCALE

REF

FMF

PREV

NO. REVISION

BY & DATE

CHK

ANG

FINISH

RFP 09-12-2005

DIST WA-PR

CAD FILE 00417203LN

SIZE

A

DRAWING NO. PAGE OF

004172-03-LN

REV.

THIS DRAWING IN DESIGN AND DETAIL IS OUR PROPERTY AND MUST NOT BE USED EXCEPT IN CONNECTION WITH OUR WORK ALL RIGHTS OF DESIGN AND INVENTION ARE RESERVED THIS IS AN ELECTRONICALLY GENERATED DOCUMENT – DO NOT SCALE THIS PRINT