

# PRODUCT INFORMATION PACKET



Model No: LM60054

Catalog No: LM60054

..50HP..1200RPM.365T.TEFC.230/460V.3PH.60HZ.CONT.40C.1.15SF.RIGID.....

Miscellaneous

Regal and Leeson are trademarks of Regal Rexnord Corporation or one of its affiliated companies.

©2021 Regal Rexnord Corporation, All Rights Reserved. MC017097E





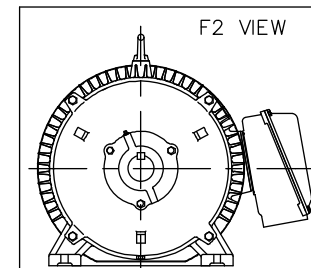
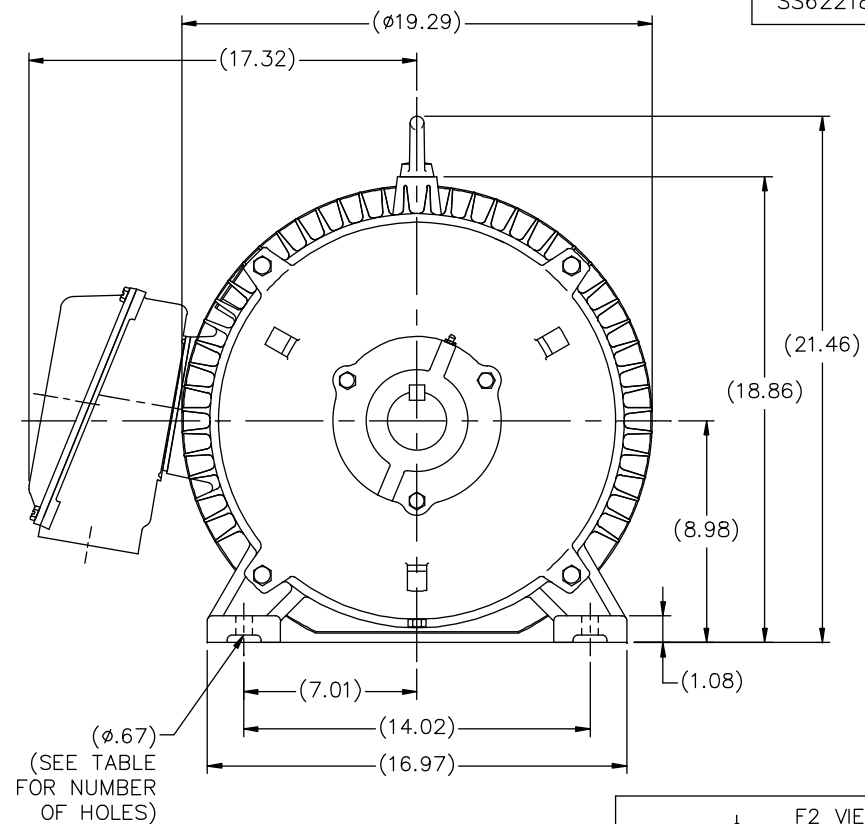
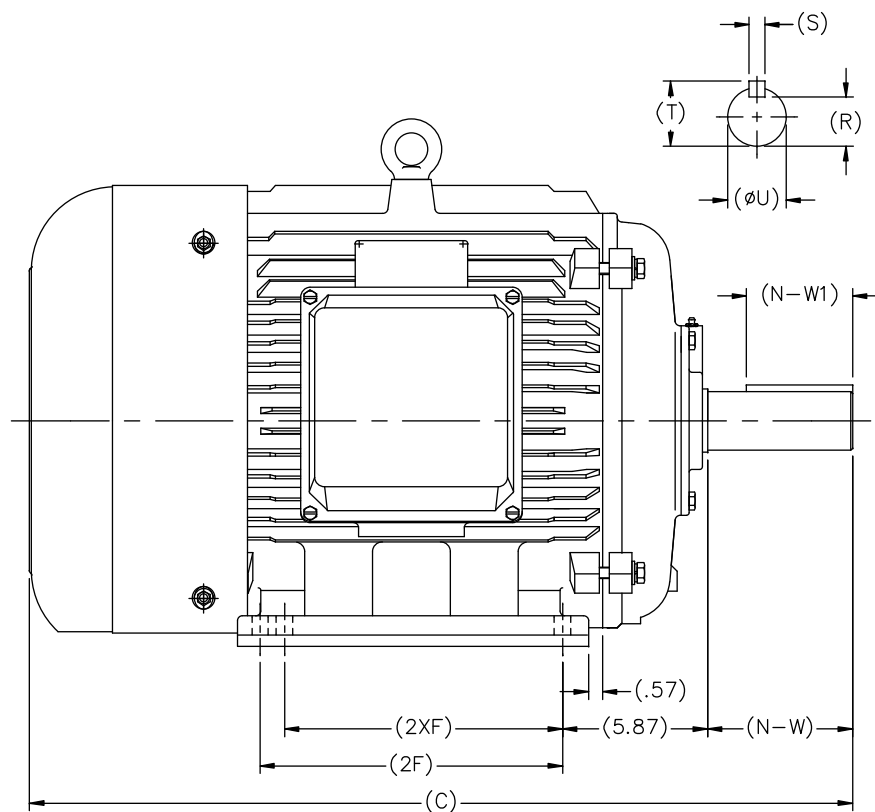
### Nameplate Specifications

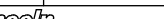
Output HP	50 Hp	Output KW	37.0 kW
Frequency	60 Hz	Voltage	208-230/460 V
Current	135.0-126.0/63.0 A	Speed	1190 rpm
Service Factor	1.15	Phase	3
Efficiency	94.1 %	Power Factor	79
Duty	Continuous	Insulation Class	F
Design Code	B	KVA Code	G
Frame	365T	Enclosure	Totally Enclosed Fan Cooled
Thermal Protection	No	Ambient Temperature	40 °C
Drive End Bearing Size	6313	Opp Drive End Bearing Size	6313
UL	Recognized	CSA	Y
CE	Y	IP Code	43
Number of Speeds	1		

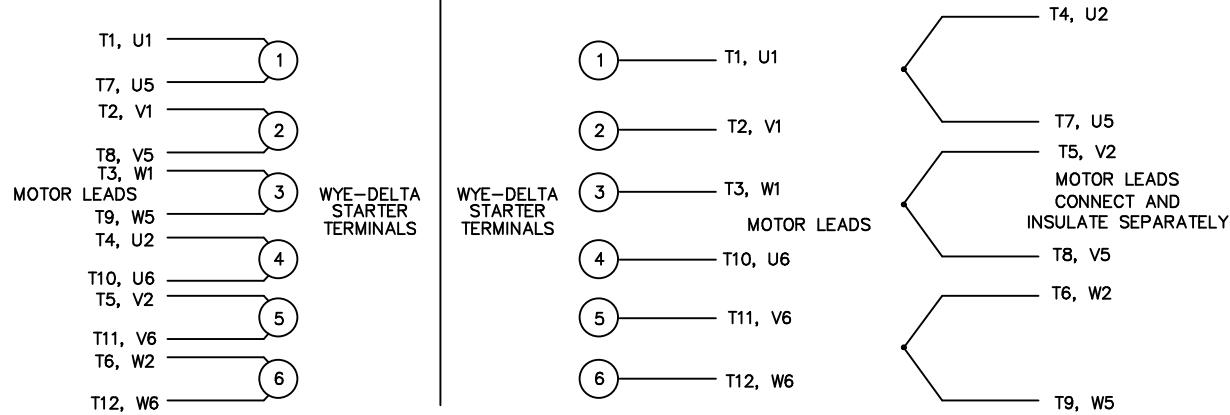
### Technical Specifications

Electrical Type	Squirrel Cage Inverter Rated	Starting Method	Wye Start Delta Run Or Inverter
Poles	6	Rotation	Reversible
Resistance Main	.12 Ohms	Mounting	Rigid Base
Motor Orientation	Horizontal	Drive End Bearing	Ball
Opp Drive End Bearing	Ball	Frame Material	Cast Iron
Shaft Type	T	Assembly/Box Mounting	F1/F2 CAPABLE
Outline Drawing	SS622180LN	Connection Drawing	004172.03LN

This is an uncontrolled document once printed or downloaded and is subject to change without notice. Date Created:10/26/2021

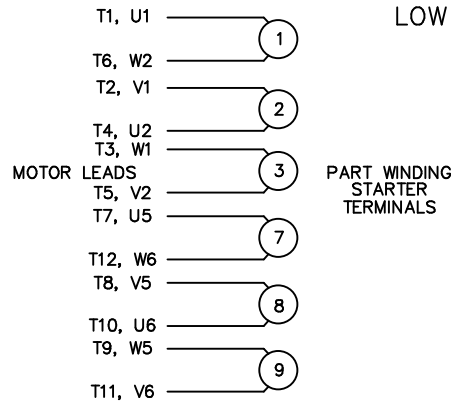


											TOLERANCES UNLESS SPECIFIED				DRAWN MSG 02-13-2007					
											DEC.	INCHES			CHK	ML	02-16-2207			
												.X	±.1	APPD		SB	02-23-2007			
NT364TS-2	30.20	11.26	---	4	3.74	2.05	1.87	1.59	0.50	2.09		.XX	±.03	TITLE OUTLINE 360 FR. — TEFC — (REDESIGNED)		SCALE	1=5			
NT365TS-2	31.18	12.24	11.26	6								.XXX	±.005			REF				
NT364T-4, 6	32.32	11.26	---	4	5.87	4.29	2.37	2.01	0.63	2.64	1	ADDED F2 VIEW	TJW	7/9/2013	SB	.XXXX	±.0005	MAT'L	FMF	HEBEI
NT365T-4, 6	33.31	12.24	11.26	6							NO.	REVISION				BY & DATE		CHK	ANG	±7'30"
THIS DRAWING IN DESIGN AND DETAIL IS OUR PROPERTY AND MUST NOT BE USED EXCEPT IN CONNECTION WITH OUR WORK ALL RIGHTS OF DESIGN AND INVENTION ARE RESERVED THIS IS AN ELECTRONICALLY GENERATED DOCUMENT - DO NOT SCALE THIS PRINT											RFP	CAD FILE SS622180LN				SIZE	DRAWING NO.	PAGE	OF	REV.
FRAME	C	2F	2XF	HOLES	N-W	N-W1	ØU	R	S	T					DIST	B	SS622180LN		1	

WYE – DELTA STARTING USEABLE ON 2,4 AND 6 POLE MOTORS.LOW VOLTAGE CONNECTIONHIGH VOLTAGE CONNECTION

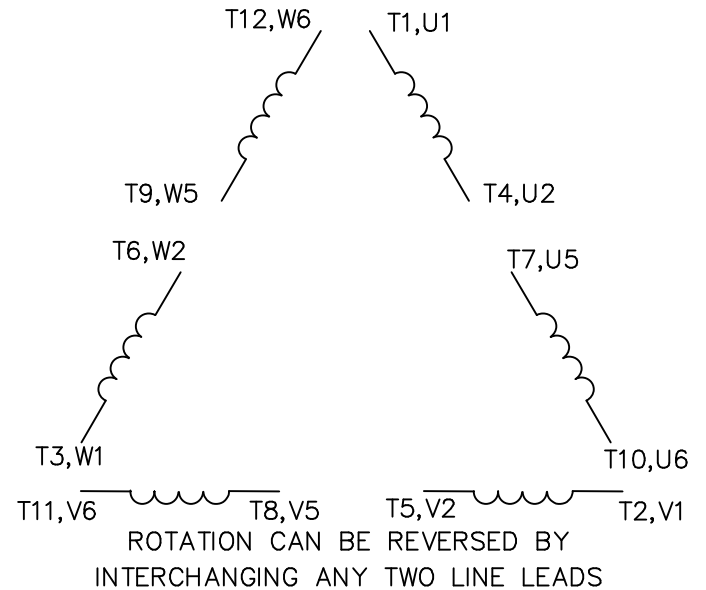
REFER TO THE WYE-DELTA STARTER CONNECTION INSTRUCTIONS FOR PROPER CONNECTION OF POWER LINES TO STARTER.

**PART WINDING START USABLE ON 4 & 6 POLE MOTORS**  
**LOW VOLTAGE CONNECTION ONLY**



REFER TO THE PART WINDING STARTER INSTRUCTIONS FOR PROPER CONNECTION OF POWER LINES TO STARTER.

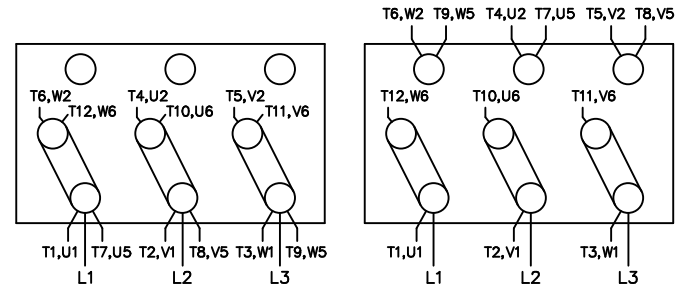
REFER TO THE CUTLER – HAMMER OR EQUIV. FOR PROPER SELECTION OF OVERLOAD HEATER COILS.

LINE LEADS

12 LEAD DELTA CONNECTION ACROSS THE LINE START  
 (FOR Y START DELTA RUN, REMOVE THE JUMPERS)

LOW VOLTAGE  
 (MUST BE REWIRED  
 AS SHOWN)

HIGH VOLTAGE  
 (FACTORY WIRED FOR HIGH  
 VOLTAGE AS SHOWN)



TOLERANCES  
 UNLESS SPECIFIED

DEC. INCHES

.X ±.1

.XX ±.02

.XXX ±.005

.XXXX ±.0005

ANG ±7'30"

**Lincoln**  
**MOTORS**

TITLE DELTA – WYE CONNECTION DIAGRAM  
 IEC CAST IRON MOTORS

MAT'L.

FINISH

DRAWN RJW 09-12-2005

CHK ML 09-12-2005

APPD GK 09-12-2005

SCALE

REF

FMF

PREV

NO. REVISION BY & DATE

RFP 09-12-2005

DIST WA-PR

CAD FILE 00417203LN

SIZE

A

DRAWING NO. PAGE OF REV.

004172-03-LN