

PRODUCT INFORMATION PACKET



Model No: LM60051

Catalog No: LM60051

BSOLETE-REPLACED BY 199029.00 -.40HP..1200RPM.364T.TEFC.230/460V.3PH.60HZ.CONT.40C.1.15SF.RIGID...

.....

Regal and Leeson are trademarks of Regal Rexnord Corporation or one of its affiliated companies.

©2023 Regal Rexnord Corporation, All Rights Reserved. MC017097E





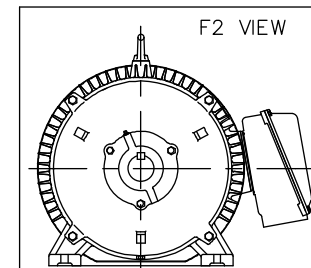
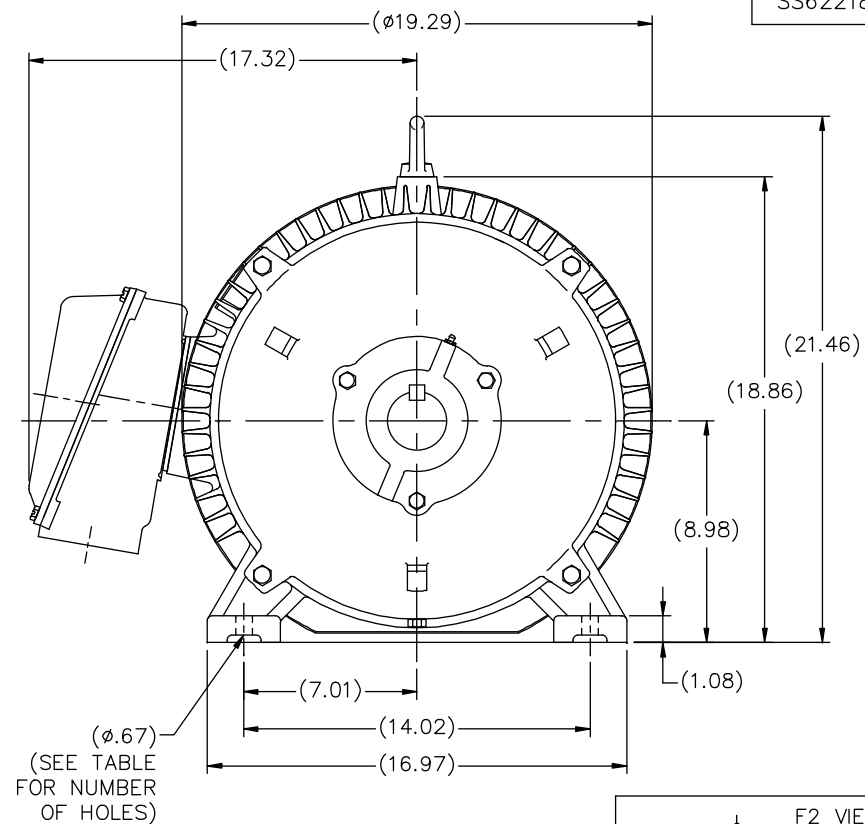
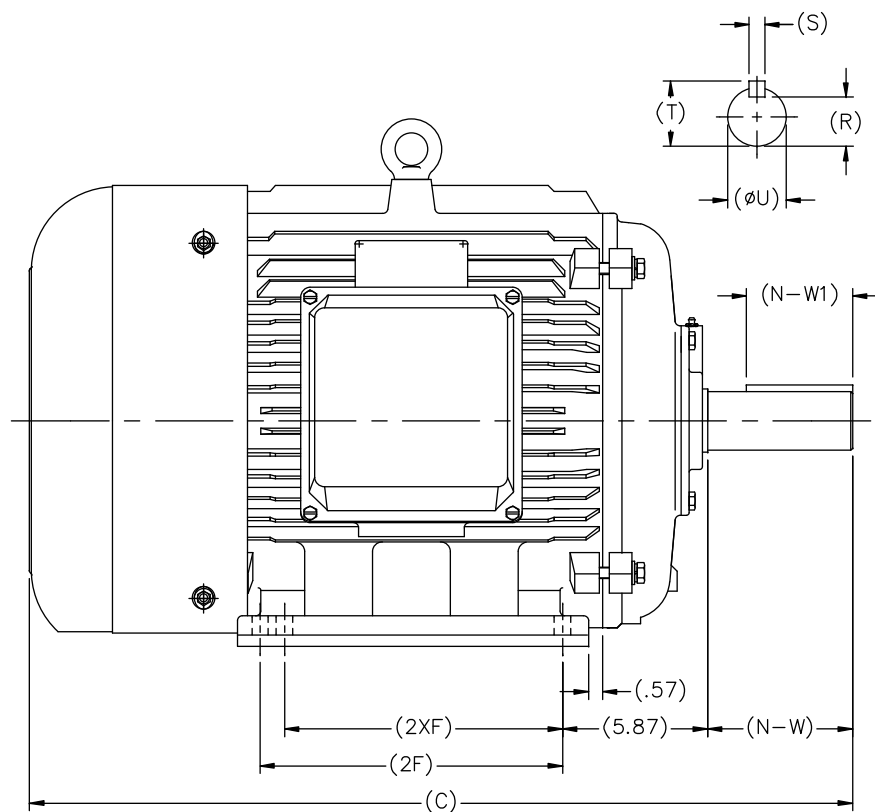
Nameplate Specifications


| | | | |
|------------------------|------------------------|----------------------------|-----------------------------|
| Phase | 3 | Output HP | 40 & 30 Hp |
| Output KW | 30.0 & 22.4 kW | Voltage | 208-230/460 & 190/380 V |
| Speed | 1192 & 992 rpm | Service Factor | 1.15 & 1.15 |
| Frame | 364T | Enclosure | Totally Enclosed Fan Cooled |
| Thermal Protection | No Protection | Efficiency | 94.1 & 94.1 % |
| Ambient Temperature | 40 °C | Frequency | 60 & 50 Hz |
| Current | 109-101/50.5 & 92/46 A | Power Factor | 78.5 |
| Duty | Continuous | Insulation Class | F |
| Design Code | B | KVA Code | F |
| Drive End Bearing Size | 6314 | Opp Drive End Bearing Size | 6313 |
| UL | Recognized | CSA | Y |
| CE | Y | IP Code | 43 |
| Number of Speeds | 1 | | |

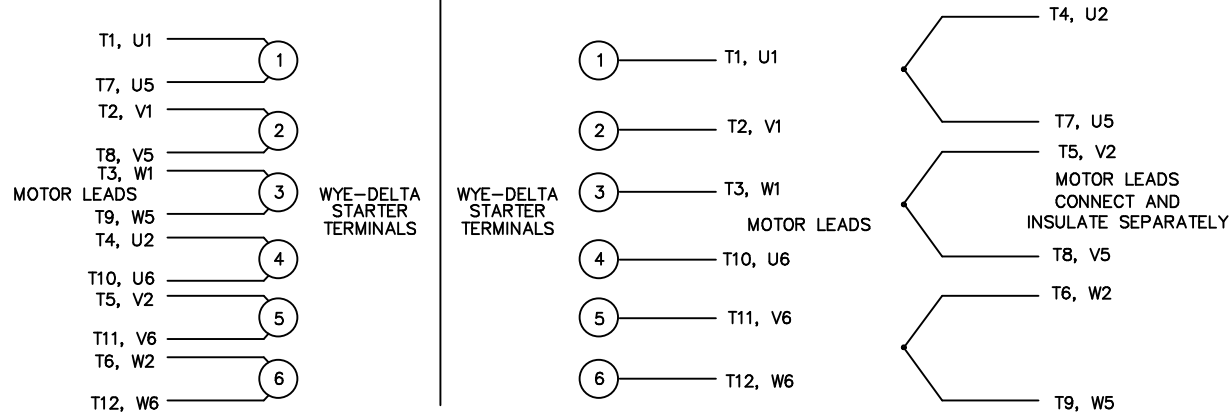
Technical Specifications

| | | | |
|-----------------------|-----------------------------|-----------------------|-----------------|
| Electrical Type | Squirrel Cage Induction Run | Starting Method | Across The Line |
| Poles | 6 | Rotation | Reversible |
| Resistance Main | .152 Ohms | Mounting | Rigid Base |
| Motor Orientation | Horizontal | Drive End Bearing | Ball |
| Opp Drive End Bearing | Ball | Frame Material | Cast Iron |
| Shaft Type | T | Assembly/Box Mounting | F1/F2 CAPABLE |
| Outline Drawing | SS622180LN | Connection Drawing | 004172.03LN |

This is an uncontrolled document once printed or downloaded and is subject to change without notice. Date Created:06/23/2023

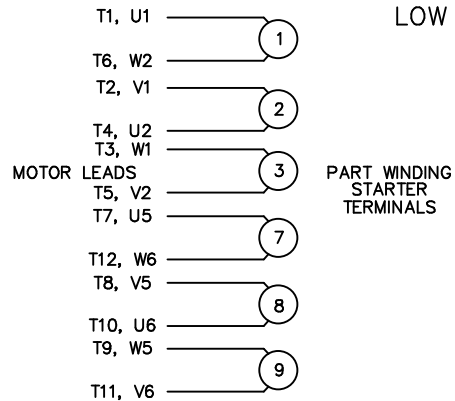


| | | | | | | | | | | | | | | | | | | | | | | | | | | | |
|-------------|-------|-------|-------|---|------|------|------|------|------|---|-----------------|--------------------------------|--------------|---|--|----------------------|----------------|--|--------|------|------|---------------------|--|------------------------|--|-----------|--|
| | | | | | | | | | | | | TOLERANCES UNLESS SPECIFIED | |  | | DRAWN MSG 02-13-2007 | | | | | | | | | | | |
| | | | | | | | | | | | | DEC. INCHES | | | | CHK ML 02-16-2207 | | | | | | | | | | | |
| | | | | | | | | | | | | .X ±.1 | | APPD SB 02-23-2007 | | | | | | | | | | | | | |
| NT364TS-2 | 30.20 | 11.26 | --- | 4 | 3.74 | 2.05 | 1.87 | 1.59 | 0.50 | 2.09 | | | .XX ±.03 | | TITLE OUTLINE 360 FR. — TEFC — (REDESIGNED) | | SCALE 1=5 | | | | | | | | | | |
| NT365TS-2 | 31.18 | 12.24 | 11.26 | 6 | | | | | | | | | .XXX ±.005 | | | | REF | | | | | | | | | | |
| NT364T-4, 6 | 32.32 | 11.26 | --- | 4 | 5.87 | 4.29 | 2.37 | 2.01 | 0.63 | 2.64 | 1 ADDED F2 VIEW | | TJW 7/9/2013 | | SB .XXXX ±.0005 | | MAT'L | | | | | | | | | | |
| NT365T-4, 6 | 33.31 | 12.24 | 11.26 | 6 | | | | | | | NO. | | REVISION | | BY & DATE | | CHK ANG ±7'30" | | FINISH | | PREV | | | | | | |
| | | | | | | | | | | THIS DRAWING IN DESIGN AND DETAIL IS OUR PROPERTY AND MUST NOT BE USED EXCEPT IN CONNECTION WITH OUR WORK ALL RIGHTS OF DESIGN AND INVENTION ARE RESERVED THIS IS AN ELECTRONICALLY GENERATED DOCUMENT — DO NOT SCALE THIS PRINT | | | | | | | | | | RFP | | CAD FILE SS622180LN | | SIZE | | | |
| | | | | | | | | | | | | | | | | | | | | DIST | | B | | DRAWING NO. SS622180LN | | PAGE OF 1 | |
| | | | | | | | | | | | | | | | | | | | | | | | | | | | |

WYE – DELTA STARTING USEABLE ON 2,4 AND 6 POLE MOTORS.LOW VOLTAGE CONNECTIONHIGH VOLTAGE CONNECTION

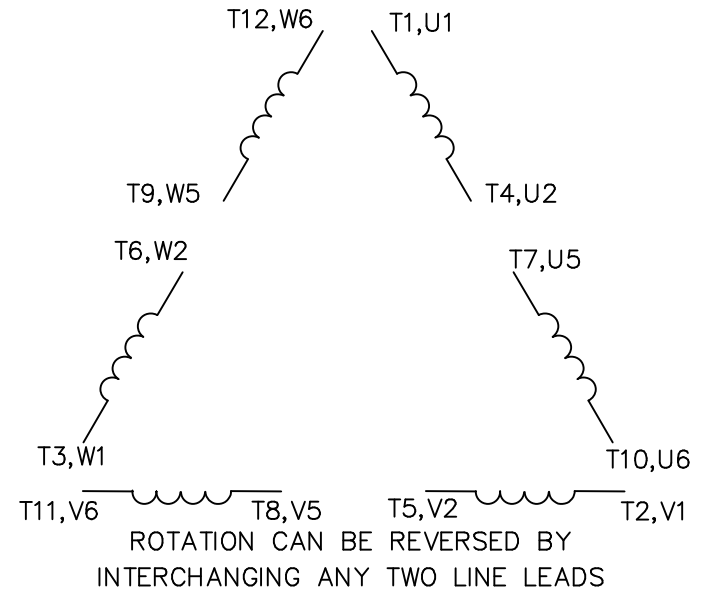
REFER TO THE WYE-DELTA STARTER CONNECTION INSTRUCTIONS FOR PROPER CONNECTION OF POWER LINES TO STARTER.

PART WINDING START USABLE ON 4 & 6 POLE MOTORS
LOW VOLTAGE CONNECTION ONLY



REFER TO THE PART WINDING STARTER INSTRUCTIONS FOR PROPER CONNECTION OF POWER LINES TO STARTER.

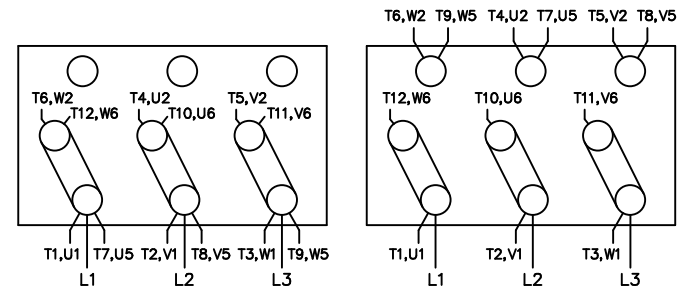
REFER TO THE CUTLER – HAMMER OR EQUIV. FOR PROPER SELECTION OF OVERLOAD HEATER COILS.

LINE LEADS

12 LEAD DELTA CONNECTION ACROSS THE LINE START
 (FOR Y START DELTA RUN, REMOVE THE JUMPERS)

LOW VOLTAGE
 (MUST BE REWIRED
 AS SHOWN)

HIGH VOLTAGE
 (FACTORY WIRED FOR HIGH
 VOLTAGE AS SHOWN)



TOLERANCES
 UNLESS SPECIFIED

DEC. INCHES

.X ±.1

.XX ±.02

.XXX ±.005

.XXXX ±.0005

ANG ±7'30"

Lincoln
MOTORS

TITLE DELTA – WYE CONNECTION DIAGRAM
 IEC CAST IRON MOTORS

MAT'L.

FINISH

DRAWN RJW 09-12-2005

CHK ML 09-12-2005

APPD GK 09-12-2005

SCALE

REF

FMF

PREV

NO. REVISION

BY & DATE

CHK

ANG

RFP 09-12-2005

DIST WA-PR

CAD FILE 00417203LN

SIZE

A

DRAWING NO. PAGE OF

004172-03-LN

REV.