

# PRODUCT INFORMATION PACKET



Model No: LM60048

Catalog No: LM60048

OBSOLETE - REPLACED BY 199026.00 - 30/25,1200/1000,TEFC,326T,3/60/50/208-230/460#190/380

Regal and Leeson are trademarks of Regal Rexnord Corporation or one of its affiliated companies.

©2023 Regal Rexnord Corporation, All Rights Reserved. MC017097E





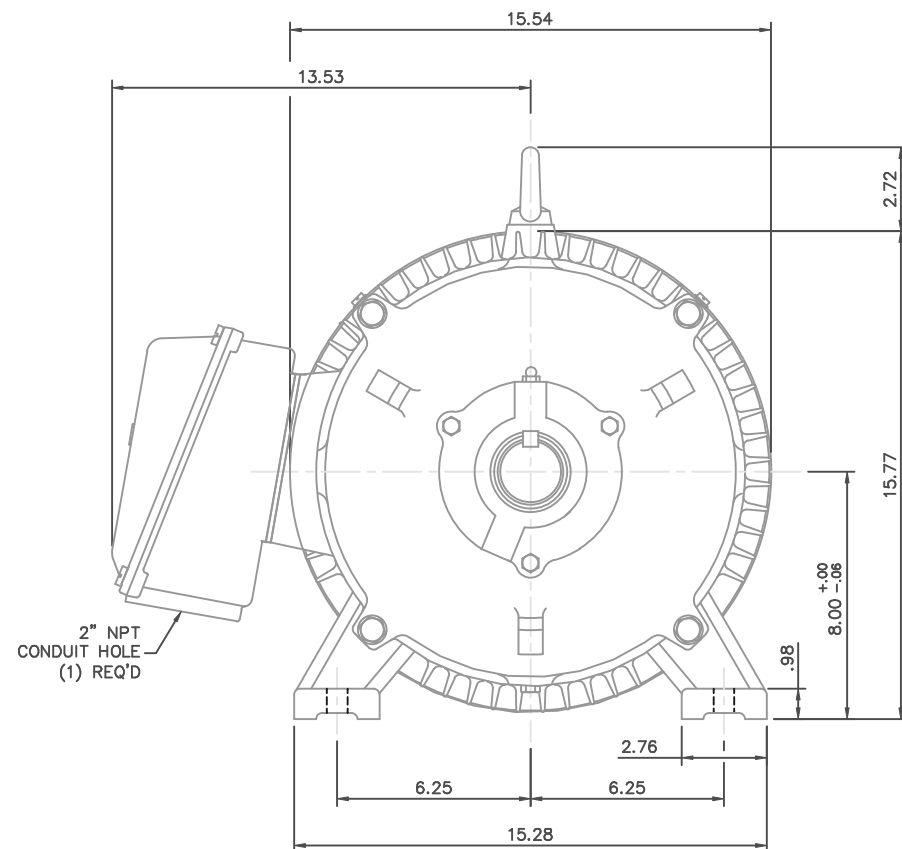
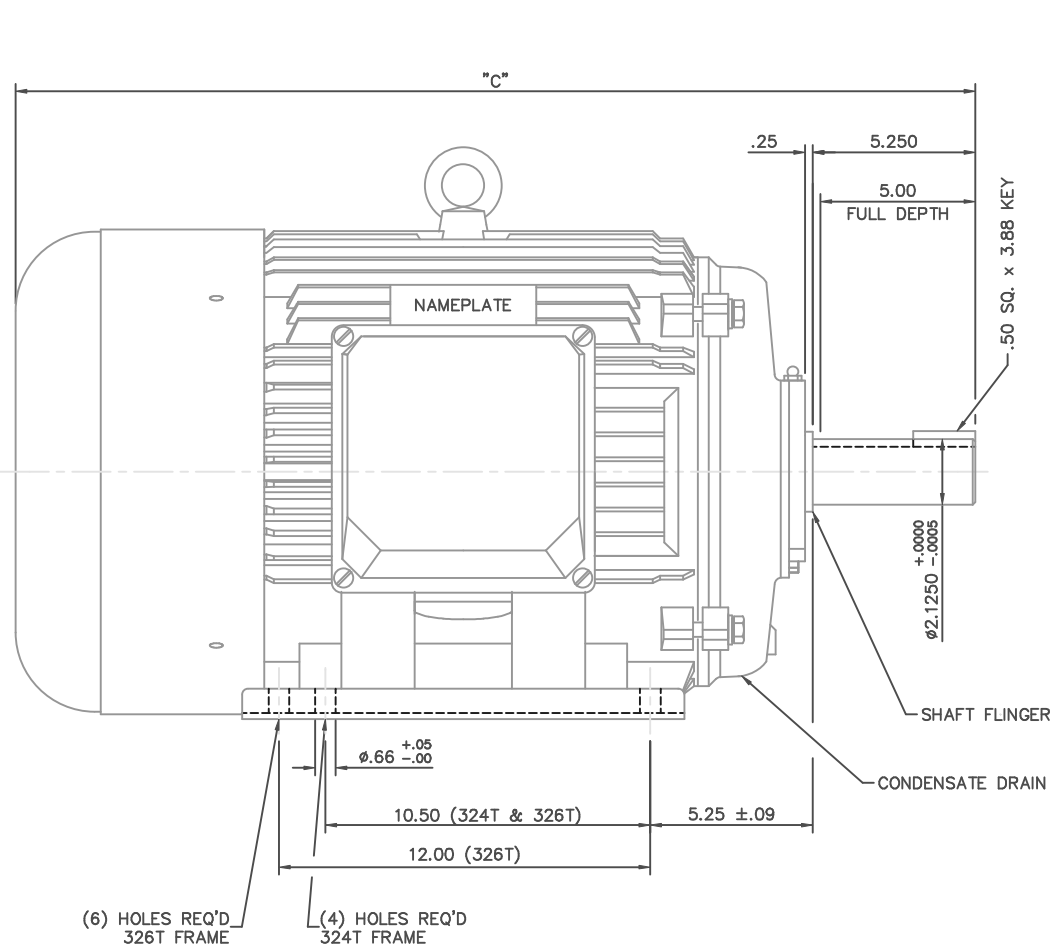
### Nameplate Specifications

Phase	3	Output HP	30 & 25 Hp
Output KW	22.4 & 18.7 kW	Voltage	208-230/460 & 190/380 V
Speed	1190 & 990 rpm	Service Factor	1.25 & 1.15
Frame	326T	Enclosure	Totally Enclosed Fan Cooled
Thermal Protection	No Protection	Efficiency	93.6 & 92.4 %
Ambient Temperature	40 °C	Frequency	60 & 50 Hz
Current	82-77/38.5 & 78/39 A	Power Factor	78
Duty	Continuous	Insulation Class	F
Design Code	B	KVA Code	F
Drive End Bearing Size	6312	Opp Drive End Bearing Size	6312
UL	Recognized	CSA	Y
CE	Y	IP Code	43
Number of Speeds	1		

### Technical Specifications

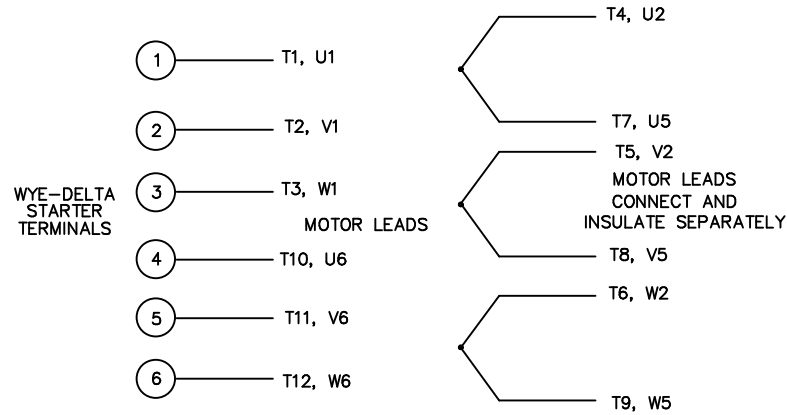
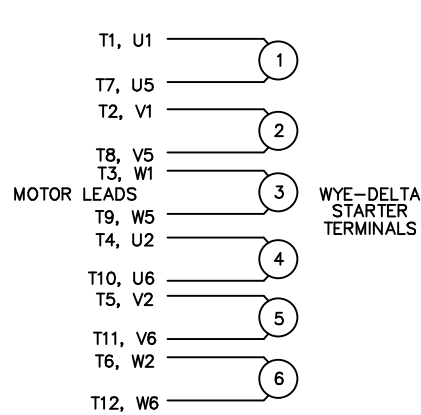
Electrical Type	Squirrel Cage Induction Run	Starting Method	Wye Start Delta Run
Poles	6	Rotation	Reversible
Mounting	Rigid Base	Motor Orientation	Horizontal
Drive End Bearing	Ball	Opp Drive End Bearing	Ball
Frame Material	Cast Iron	Shaft Type	T
Assembly/Box Mounting	F1/F2 CAPABLE		
Outline Drawing	16954160LN	Connection Drawing	004172.03LN

This is an uncontrolled document once printed or downloaded and is subject to change without notice. Date Created:06/22/2023



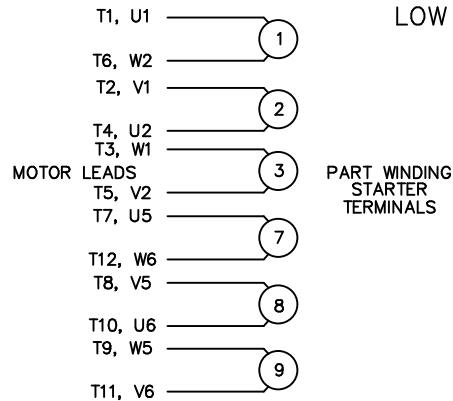
FRAME DESIGN	"C"
324T	29.53
326T	31.02

		TOLERANCES UNLESS SPECIFIED		TITLE	DRAWN JJK 03/29/99
NO.	REVISION	BY & DATE	CHK		
01	ADDED HOLE FOR 326T BASE	JJK 07/13/99	CHK	OUTLINE - 320T FRAME TEFC - RIGID	CHK
					APPD PG 03/31/99
					SCALE 1=4
					REF 169504
					FMF
					PREV
THIS DRAWING IN DESIGN AND DETAIL IS OUR PROPERTY AND MUST NOT BE USED EXCEPT IN CONNECTION WITH OUR WORK ALL RIGHTS OF DESIGN AND INVENTION ARE RESERVED THIS IS AN ELECTRONICALLY GENERATED DOCUMENT - DO NOT SCALE THIS PRINT				RFP	SIZE B
				DIST	DRAWING NO. 169541-60LN
					REV. 01

WYE – DELTA STARTING USEABLE ON 2,4 AND 6 POLE MOTORS.LOW VOLTAGE CONNECTIONHIGH VOLTAGE CONNECTION

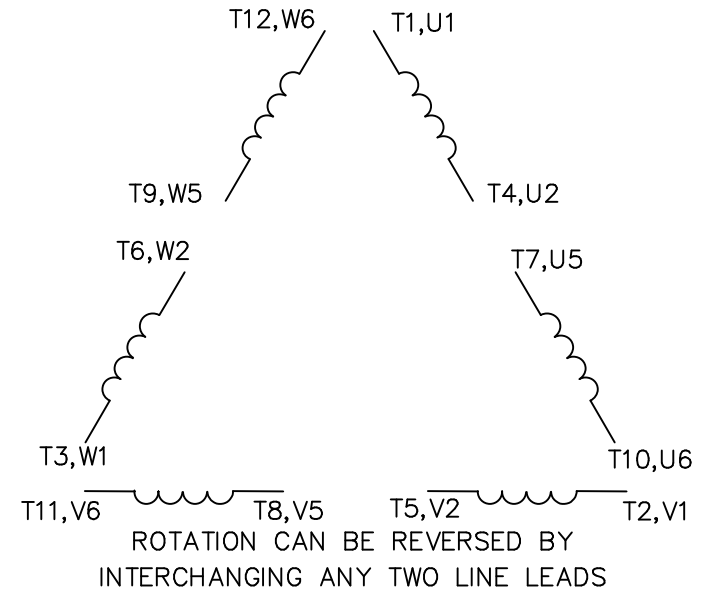
REFER TO THE WYE-DELTA STARTER CONNECTION INSTRUCTIONS FOR PROPER CONNECTION OF POWER LINES TO STARTER.

PART WINDING START USABLE ON 4 & 6 POLE MOTORS  
LOW VOLTAGE CONNECTION ONLY



REFER TO THE PART WINDING STARTER INSTRUCTIONS FOR PROPER CONNECTION OF POWER LINES TO STARTER.

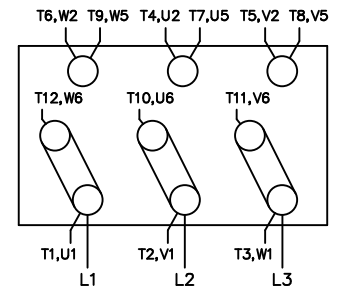
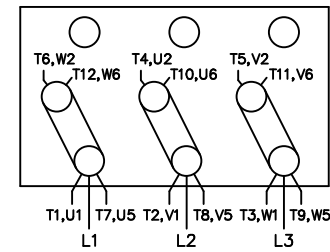
REFER TO THE CUTLER – HAMMER OR EQUIV. FOR PROPER SELECTION OF OVERLOAD HEATER COILS.

LINE LEADS

12 LEAD DELTA CONNECTION ACROSS THE LINE START  
(FOR Y START DELTA RUN, REMOVE THE JUMPERS)

LOW VOLTAGE  
(MUST BE REWIRED  
AS SHOWN)

HIGH VOLTAGE  
(FACTORY WIRED FOR HIGH  
VOLTAGE AS SHOWN)



TOLERANCES  
UNLESS SPECIFIED

DEC. INCHES

.X ±.1

.XX ±.02

.XXX ±.005

.XXXX ±.0005

ANG ±7'30"

**Lincoln**  
**MOTORS**

TITLE DELTA – WYE CONNECTION DIAGRAM  
IEC CAST IRON MOTORS

MAT'L.

FINISH

DRAWN RJW 09-12-2005

CHK ML 09-12-2005

APPD GK 09-12-2005

SCALE

REF

FMF

PREV

NO. REVISION BY & DATE

RFP 09-12-2005

DIST WA-PR

CAD FILE 00417203LN

SIZE

A

DRAWING NO. PAGE OF

004172-03-LN

REV.

THIS DRAWING IN DESIGN AND DETAIL IS OUR PROPERTY AND MUST NOT BE USED EXCEPT IN CONNECTION WITH OUR WORK ALL RIGHTS OF DESIGN AND INVENTION ARE RESERVED THIS IS AN ELECTRONICALLY GENERATED DOCUMENT – DO NOT SCALE THIS PRINT