

# PRODUCT INFORMATION PACKET



Model No: LM60046

Catalog No: LM60046

..30HP..3600RPM.286TS.TEFC.230/460V.3PH.60HZ.CONT.40C.1.15SF.RIGID.....

Regal and Leeson are trademarks of Regal Rexnord Corporation or one of its affiliated companies.

©2023 Regal Rexnord Corporation, All Rights Reserved. MC017097E





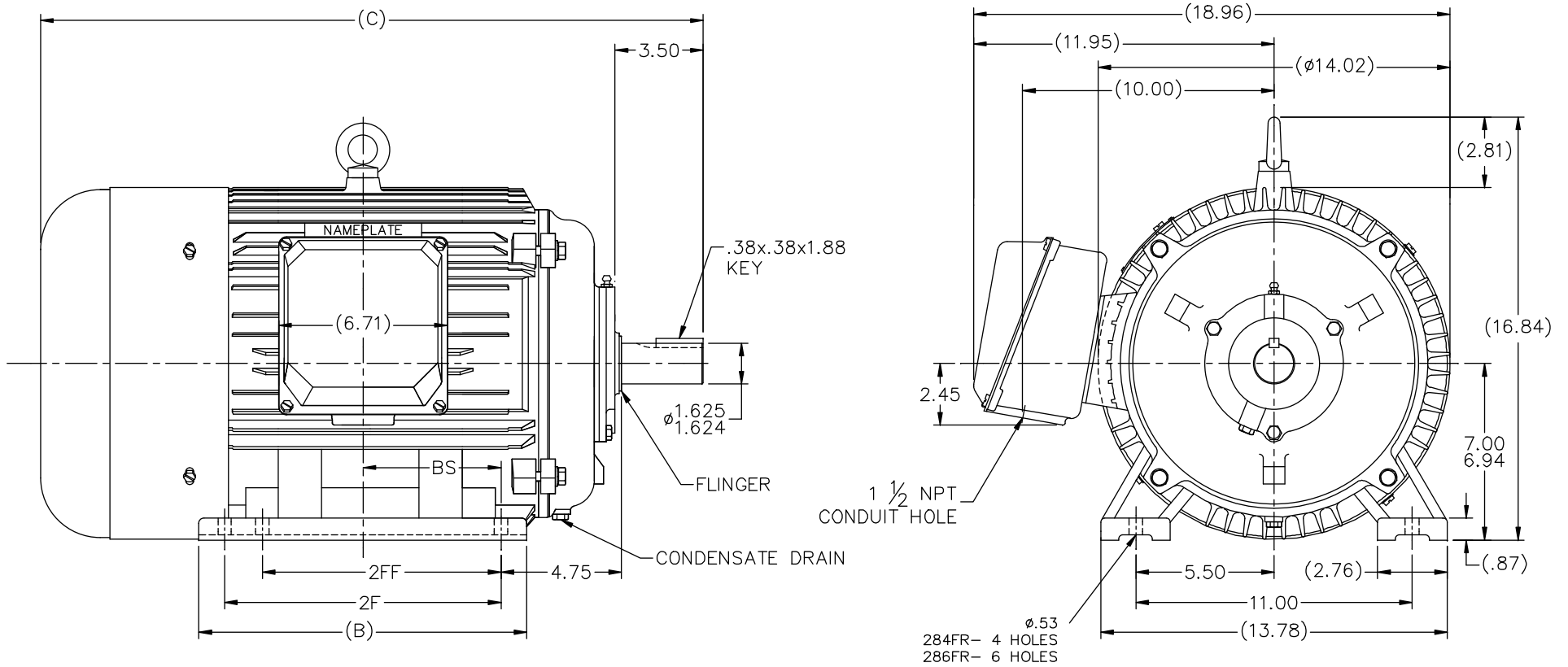
**Nameplate Specifications**


Phase	<b>3</b>	Output HP	<b>30 &amp; 25 Hp</b>
Output KW	<b>22.4 &amp; 18.7 kW</b>	Voltage	<b>208-230/460 &amp; 190/380 V</b>
Speed	<b>3552 &amp; 2950 rpm</b>	Service Factor	<b>1.15 &amp; 1.15</b>
Frame	<b>286TS</b>	Enclosure	<b>Totally Enclosed Fan Cooled</b>
Thermal Protection	<b>No Protection</b>	Efficiency	<b>94.1 &amp; 93 %</b>
Ambient Temperature	<b>40 °C</b>	Frequency	<b>60 &amp; 50 Hz</b>
Current	<b>74-68/34 &amp; 66.5/33 A</b>	Power Factor	<b>88.5</b>
Duty	<b>Continuous</b>	Insulation Class	<b>F</b>
Design Code	<b>B</b>	KVA Code	<b>G</b>
Drive End Bearing Size	<b>6311</b>	Opp Drive End Bearing Size	<b>6309</b>
UL	<b>Recognized</b>	CSA	<b>Y</b>
CE	<b>Y</b>	IP Code	<b>43</b>
Number of Speeds	<b>1</b>		

**Technical Specifications**

Electrical Type	<b>Squirrel Cage Inverter Rated</b>	Starting Method	<b>Wye Start Delta Run Or Inverter</b>
Poles	<b>2</b>	Rotation	<b>Reversible</b>
Mounting	<b>Rigid Base</b>	Motor Orientation	<b>Horizontal</b>
Drive End Bearing	<b>Ball</b>	Opp Drive End Bearing	<b>Ball</b>
Frame Material	<b>Cast Iron</b>	Shaft Type	<b>TS</b>
Assembly/Box Mounting	<b>F1/F2 CAPABLE</b>	Inverter Load	<b>CONSTANT 2:1</b>
Outline Drawing	<b>16954060LN</b>	Connection Drawing	<b>004172.03LN</b>

This is an uncontrolled document once printed or downloaded and is subject to change without notice. Date Created:06/23/2023

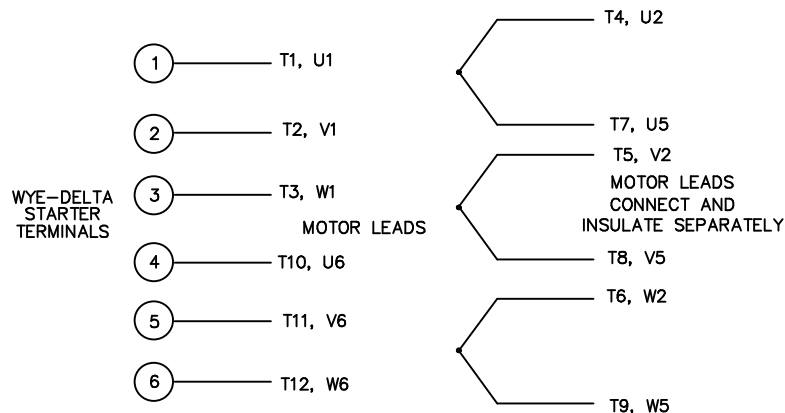
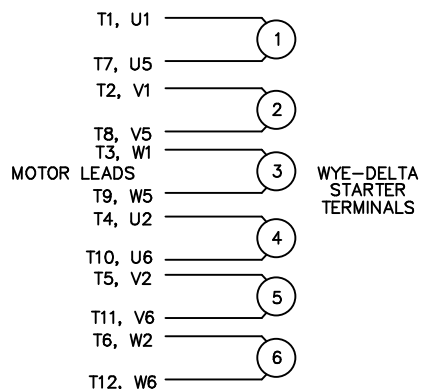


DASH	FRAME DESIGN	C	BS	B	2F	2FF	TOLERANCES UNLESS SPECIFIED				DRAWN CTO 08-20-2002								
							DEC.	INCHES			CHK	ML							
							.X	±.1		APPD	SB 08-26-2002								
							.XX	±.03	TITLE OUTLINE - RIGID	SCALE	1=4								
							.XXX	±.005	280TS FR. - TEFC	REF									
							.XXXX	±.0005	MAT'L.	FMF									
									FINISH	PREV									
1	NEW DRAWING						NO.	REVISION	BY & DATE	CHK	ANG	±7'30"	RFP	CAD FILE 16954060LN	SIZE	DRAWING NO.	PAGE	OF	REV.
1398	286TS	26.36	5.49	13.15	11.00	9.50	THIS DRAWING IN DESIGN AND DETAIL IS OUR PROPERTY AND MUST NOT BE USED EXCEPT IN CONNECTION WITH OUR WORK ALL RIGHTS OF DESIGN AND INVENTION ARE RESERVED THIS IS AN ELECTRONICALLY GENERATED DOCUMENT - DO NOT SCALE THIS PRINT			DIST	WA		B	169540-60LN				1	

WYE - DELTA STARTING USEABLE ON 2,4 AND 6 POLE MOTORS.

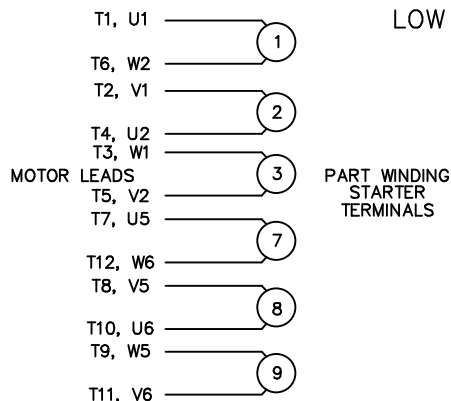
LOW VOLTAGE CONNECTION

HIGH VOLTAGE CONNECTION



REFER TO THE WYE-DELTA STARTER CONNECTION INSTRUCTIONS FOR PROPER CONNECTION OF POWER LINES TO STARTER.

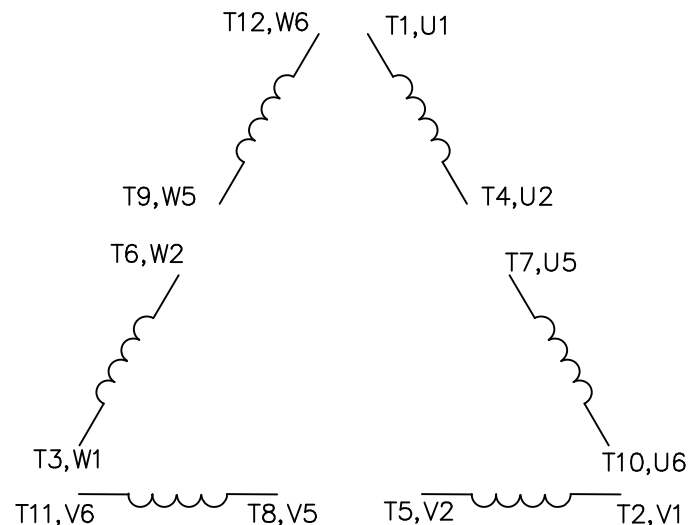
PART WINDING START USABLE ON 4 & 6 POLE MOTORS  
LOW VOLTAGE CONNECTION ONLY



REFER TO THE PART WINDING STARTER INSTRUCTIONS FOR PROPER CONNECTION OF POWER LINES TO STARTER.

REFER TO THE CUTLER - HAMMER OR EQUIV. FOR PROPER SELECTION OF OVERLOAD HEATER COILS.

LINE LEADS

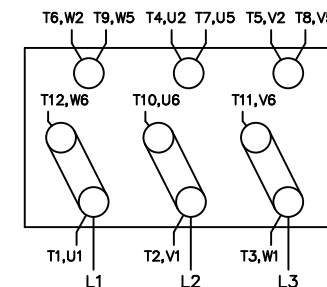
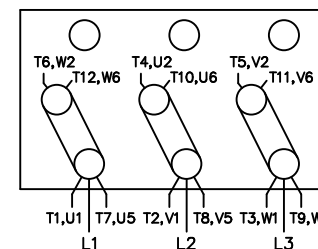


ROTATION CAN BE REVERSED BY INTERCHANGING ANY TWO LINE LEADS

12 LEAD DELTA CONNECTION ACROSS THE LINE START (FOR Y START DELTA RUN, REMOVE THE JUMPERS)

LOW VOLTAGE (MUST BE REWIRED AS SHOWN)

HIGH VOLTAGE (FACTORY WIRED FOR HIGH VOLTAGE AS SHOWN)



TOLERANCES UNLESS SPECIFIED

DEC. INCHES

.X ±.1

.XX ±.02

.XXX ±.005

.XXXX ±.0005

ANG ±7'30"



TITLE DELTA - WYE CONNECTION DIAGRAM  
IEC CAST IRON MOTORS

DRAWN RJW 09-12-2005

CHK ML 09-12-2005

APPD GK 09-12-2005

SCALE

REF

FMF

PREV

NO.	REVISION	BY & DATE	CHK	ANG	FINISH
-----	----------	-----------	-----	-----	--------

RFP 09-12-2005

CAD FILE 00417203LN

SIZE DRAWING NO. PAGE OF REV.

A 004172-03-LN

DIST WA-PR

THIS DRAWING IN DESIGN AND DETAIL IS OUR PROPERTY AND MUST NOT BE USED EXCEPT IN CONNECTION WITH OUR WORK ALL RIGHTS OF DESIGN AND INVENTION ARE RESERVED THIS IS AN ELECTRONICALLY GENERATED DOCUMENT - DO NOT SCALE THIS PRINT