

PRODUCT INFORMATION PACKET



Model No: LM60037

Catalog No: LM60037

..15HP..3600RPM.254T.TEFC.230/460V.3PH.60HZ.CONT.40C.1.15SF.RIGID.....

Regal and Leeson are trademarks of Regal Rexnord Corporation or one of its affiliated companies.

©2023 Regal Rexnord Corporation, All Rights Reserved. MC017097E





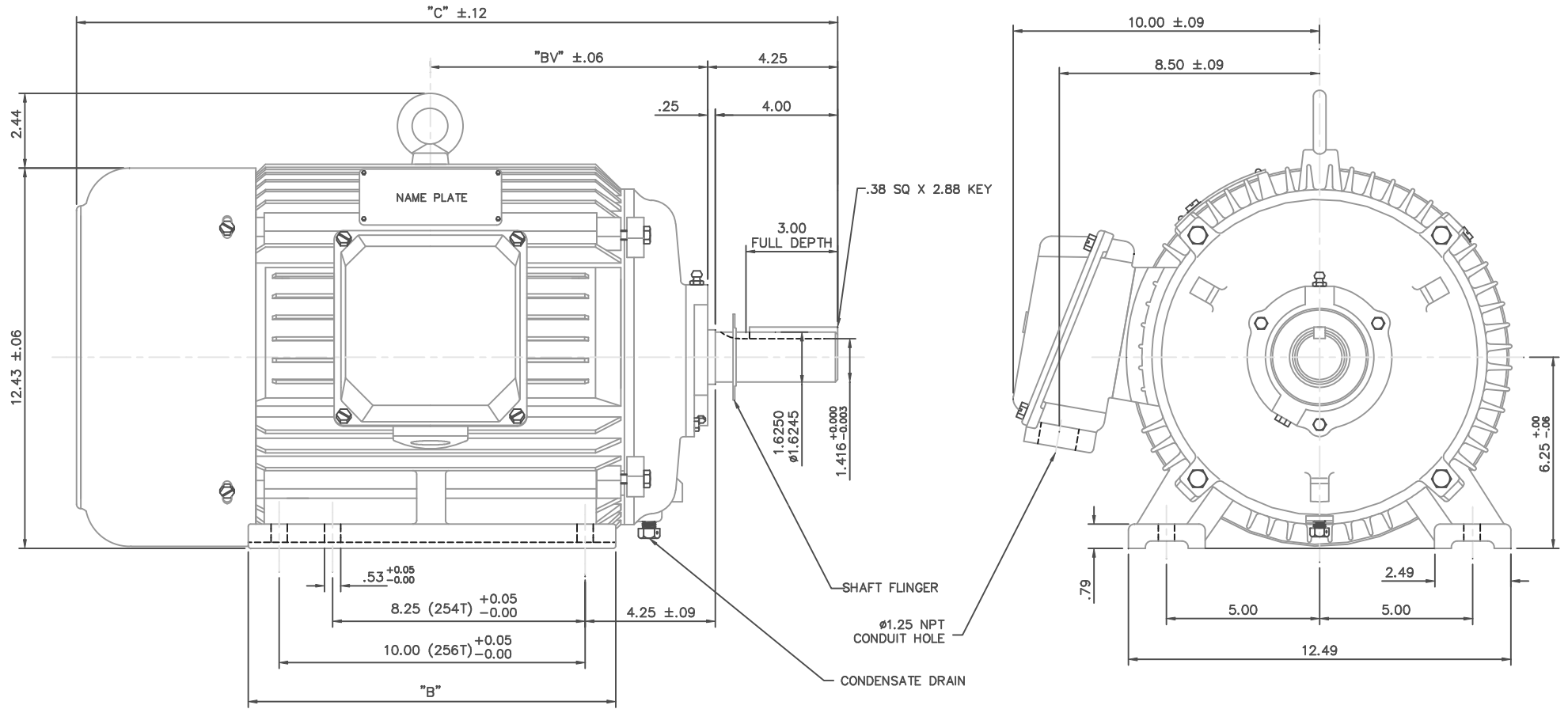
Nameplate Specifications

Phase	3	Output HP	15 & 10 Hp
Output KW	11.2 & 7.5 kW	Voltage	208-230/460 & 190/380 V
Speed	3550 & 2960 rpm	Service Factor	1.25 & 1.15
Frame	254T	Enclosure	Totally Enclosed Fan Cooled
Thermal Protection	No Protection	Efficiency	92.4 & 92.4 %
Ambient Temperature	40 °C	Frequency	60 & 50 Hz
Current	38-34.5/17.3 & 22/11 A	Power Factor	88.5
Duty	Continuous	Insulation Class	F
Design Code	B	KVA Code	G
Drive End Bearing Size	6309	Opp Drive End Bearing Size	6308
UL	Recognized	CSA	Y
CE	Y	IP Code	43
Number of Speeds	1		

Technical Specifications

Electrical Type	Squirrel Cage Inverter Duty	Starting Method	Wye Start Delta Run Or Inverter
Poles	2	Rotation	Reversible
Resistance Main	.107 Ohms	Mounting	Rigid Base
Motor Orientation	Horizontal	Drive End Bearing	Ball
Opp Drive End Bearing	Ball	Frame Material	Cast Iron
Shaft Type	T	Assembly/Box Mounting	F1/F2 CAPABLE
Inverter Load	CONSTANT 10:1		
Outline Drawing	16953860LN	Connection Drawing	004172.03LN

This is an uncontrolled document once printed or downloaded and is subject to change without notice. Date Created:06/23/2023

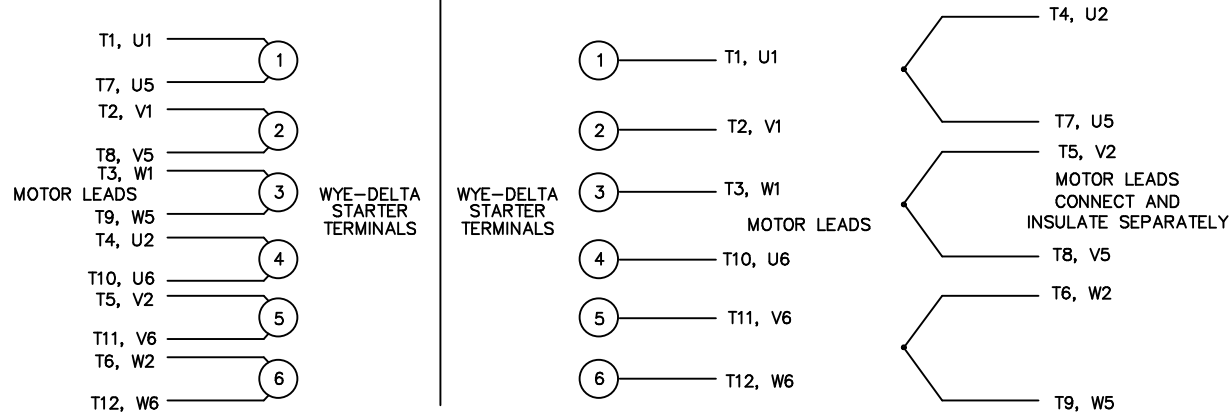


NOTE: 256T HAS 6 MTG. HOLES, USING BOTH 254T AND 256T "2F" LOCATIONS.

FRAME	"C"	"B"	"BV"
254T	23.19	10.25	8.19
256T	24.92	12.00	9.06

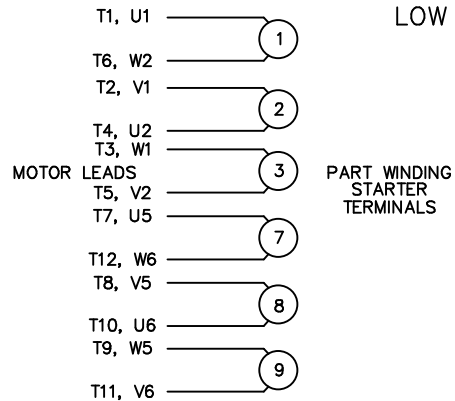
		TOLERANCES UNLESS SPECIFIED		Lincoln Motors		DRAWN DRZ 05/22/01	
		DEC.	INCHES			CHK	
		.X	±.1			APPD	
		.XX	±.03	TITLE		SCALE	5=16
		.XXX	±.005	OUTLINE - 250 FRAME		REF	
		.XXX	±.0005	TEFC - RIGID, NEW CON-BOX		FMF	
		.XXXX	±.0005	MAT'L		PREV	
		CHK	ANG	FINISH			
		RFP		CAD FILE		SIZE	DRAWING NO.
		DIST		16953860LN		B	169538-60LN
							REV. 01

THIS DRAWING IN DESIGN AND DETAIL IS OUR PROPERTY AND MUST NOT BE USED EXCEPT IN CONNECTION WITH OUR WORK. ALL RIGHTS OF DESIGN AND INVENTION ARE RESERVED. THIS IS AN ELECTRONICALLY GENERATED DOCUMENT - DO NOT SCALE THIS PRINT.

WYE – DELTA STARTING USEABLE ON 2,4 AND 6 POLE MOTORS.LOW VOLTAGE CONNECTIONHIGH VOLTAGE CONNECTION

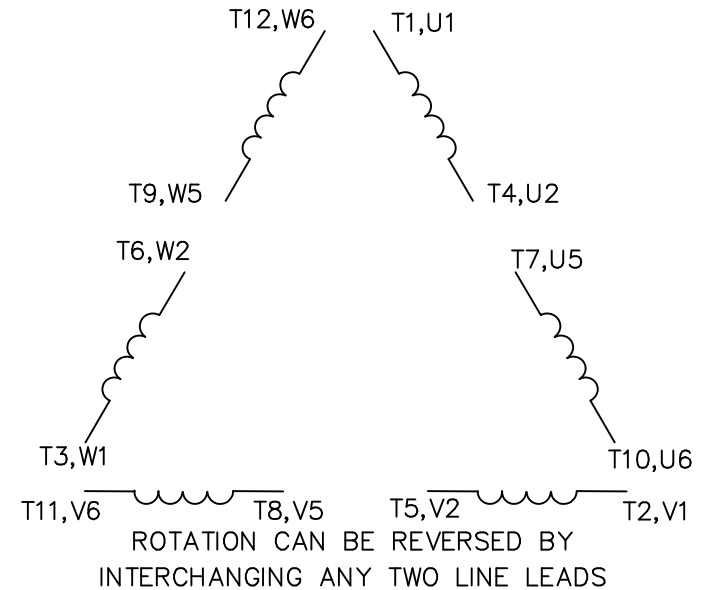
REFER TO THE WYE-DELTA STARTER CONNECTION INSTRUCTIONS FOR PROPER CONNECTION OF POWER LINES TO STARTER.

PART WINDING START USABLE ON 4 & 6 POLE MOTORS
LOW VOLTAGE CONNECTION ONLY



REFER TO THE PART WINDING STARTER INSTRUCTIONS FOR PROPER CONNECTION OF POWER LINES TO STARTER.

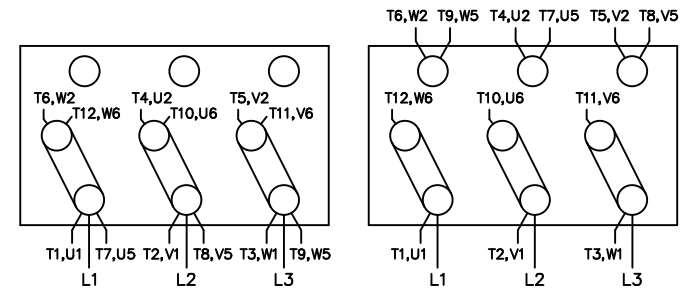
REFER TO THE CUTLER – HAMMER OR EQUIV. FOR PROPER SELECTION OF OVERLOAD HEATER COILS.

LINE LEADS

12 LEAD DELTA CONNECTION ACROSS THE LINE START
 (FOR Y START DELTA RUN, REMOVE THE JUMPERS)

LOW VOLTAGE
 (MUST BE REWIRED
 AS SHOWN)

HIGH VOLTAGE
 (FACTORY WIRED FOR HIGH
 VOLTAGE AS SHOWN)



TOLERANCES
 UNLESS SPECIFIED

DEC. INCHES

.X ±.1

.XX ±.02

.XXX ±.005

.XXXX ±.0005

ANG ±7'30"

Lincoln
MOTORS

TITLE DELTA – WYE CONNECTION DIAGRAM
 IEC CAST IRON MOTORS

MAT'L.

FINISH

DRAWN RJW 09-12-2005

CHK ML 09-12-2005

APPD GK 09-12-2005

SCALE

REF

FMF

PREV

NO. REVISION BY & DATE

RFP 09-12-2005

CAD FILE 00417203LN

SIZE

DRAWING NO. PAGE OF REV.

DIST WA-PR

A

004172-03-LN

THIS DRAWING IN DESIGN AND DETAIL IS OUR PROPERTY AND MUST NOT BE USED EXCEPT IN CONNECTION WITH OUR WORK ALL RIGHTS OF DESIGN AND INVENTION ARE RESERVED THIS IS AN ELECTRONICALLY GENERATED DOCUMENT – DO NOT SCALE THIS PRINT