

PRODUCT INFORMATION PACKET



Model No: LM60027

Catalog No: LM60027

..3HP..1200RPM.213T.TEFC.230/460V.3PH.60HZ.CONT.40C.1.15SF.RIGID.....

Regal and Leeson are trademarks of Regal Rexnord Corporation or one of its affiliated companies.

©2023 Regal Rexnord Corporation, All Rights Reserved. MC017097E





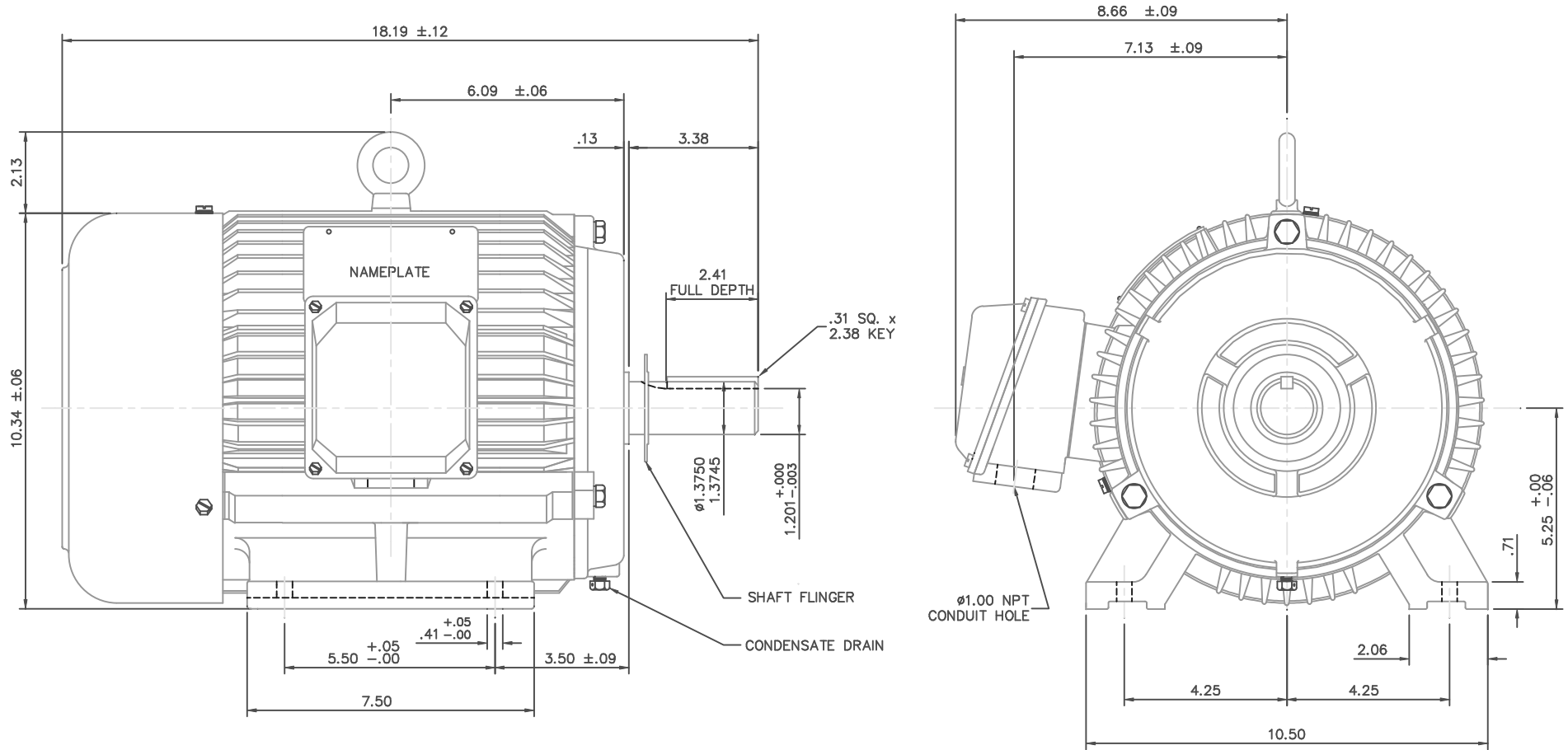
Nameplate Specifications

Phase	3	Output HP	3 & 2 Hp
Output KW	2.2 & 1.5 kW	Voltage	208-230/460 & 190/380 V
Speed	1182 & 986 rpm	Service Factor	1.15 & 1.15
Frame	213T	Enclosure	Totally Enclosed Fan Cooled
Thermal Protection	No Protection	Efficiency	89.5 & 87.5 %
Ambient Temperature	40 °C	Frequency	60 & 50 Hz
Current	9.8-9.6/4.8 & 8.4/4.2 A	Power Factor	66
Duty	Continuous	Insulation Class	F
Design Code	B	KVA Code	K
Drive End Bearing Size	6308	Opp Drive End Bearing Size	6306
UL	Recognized	CSA	Y
CE	Y	IP Code	43
Number of Speeds	1		

Technical Specifications

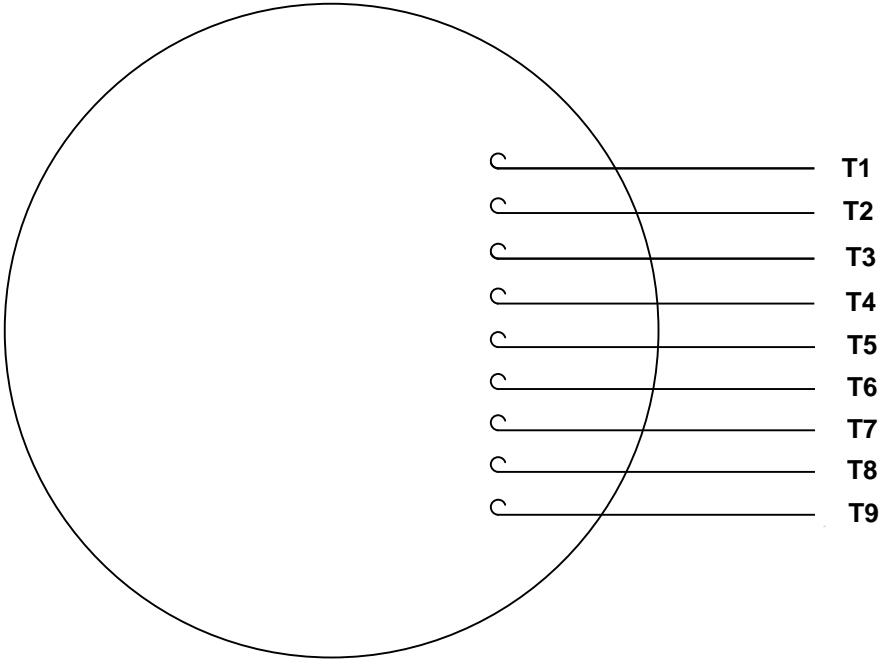
Electrical Type	Squirrel Cage Inverter Rated	Starting Method	Line Or Inverter
Poles	6	Rotation	Reversible
Resistance Main	3.09 Ohms	Mounting	Rigid Base
Motor Orientation	Horizontal	Drive End Bearing	Ball
Opp Drive End Bearing	Ball	Frame Material	Cast Iron
Shaft Type	T	Assembly/Box Mounting	F1/F2 CAPABLE
Inverter Load	CONSTANT 10:1		
Outline Drawing	16953560LN	Connection Drawing	00501001LN

This is an uncontrolled document once printed or downloaded and is subject to change without notice. Date Created:06/22/2023

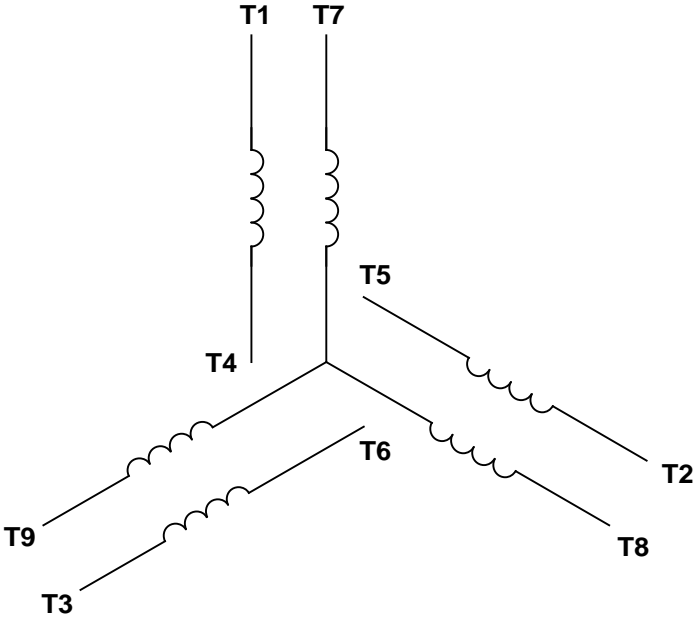


		TOLERANCES UNLESS SPECIFIED		Lincoln Motors	DRAWN JJK 03/25/99
		DEC.	INCHES		
		.X	±.1		CHK
		.XX	±.03	TITLE	PG 03/31/99
		.XXX	±.005	OUTLINE - 213T FRAME	SCALE 3=8
		.XXXX	±.0005	TEFC - RIGID MOUNT, NEW CON-BOX	REF 169501
01	REDRAWN TO CURRENT CAD STANDARDS	CJK	9/17/01	MAT'L	CAST IRON
NO.	REVISION	BY & DATE	CHK	ANG	±7'30"
THIS DRAWING IN DESIGN AND DETAIL IS OUR PROPERTY AND MUST NOT BE USED EXCEPT IN CONNECTION WITH OUR WORK. ALL RIGHTS OF DESIGN AND INVENTION ARE RESERVED. THIS IS AN ELECTRONICALLY GENERATED DOCUMENT - DO NOT SCALE THIS PRINT				FINISH	PREV
		RFP	CAD FILE	16953560LN	SIZE
		DIST	B	DRAWING NO.	169535-60LN
					REV. 01

VIEW FROM OUTSIDE OF MOTOR AT SWITCH END.




LINE LEADS



VOLTAGE	L1	L2	L3	JOIN & INSULATE
HIGH	T1	T2	T3	(T4,T7) (T5,T8) (T6,T9)
LOW	T1,T7	T2,T8	T3,T9	T4,T5,T6

RBC PROPRIETARY AND CONFIDENTIAL INFORMATION
This document is the property of REGAL BELOIT CORPORATION ("RBC") including its subsidiaries and divisions and contains proprietary information of RBC. This document is loaned on the express condition that neither it nor the information contained therein shall be disclosed to others without the express written consent of RBC, and that the information shall be used by the recipient only as approved expressly by RBC. This document shall be returned to RBC upon its request. This document may be subject to certain restrictions under U.S. export control laws and regulations.

				TOLERANCES UNLESS SPECIFIED			DRAWN KMM 04/16/02				
				DEC	INCHES		CHK				
				.X	±.1		APPR				
				.XX	±.01		SCALE 1:1				
				.XXX	±.005		REF FIG. 2-51				
--	REDRAWN IN SOLIDWORKS		VJB 02/08/11		.XXXX ±.0005	TITLE EXTERNAL WIRING DIAGRAM 3 PHASE W/O PROTECTOR			FMF		
NO	REVISION		BY & DATE	CHK	ANG ±1/2°	FINISH			PAGE OF		
THIRD ANGLE PROJECTION				RFP 04/12/02		PREV			SIZE	DRAWING NO	REV
				NETWORK FILE NAME 00501001LN					A	005010-01LN	--