

PRODUCT INFORMATION PACKET

Model No: LM34809
Catalog No: LM34809
10,3600,TEFC,215TC,3/60/230/460

Regal and are trademarks of Regal Rexnord Corporation or one of its affiliated companies.
©2022 Regal Rexnord Corporation, All Rights Reserved. MC017097E



Nameplate Specifications

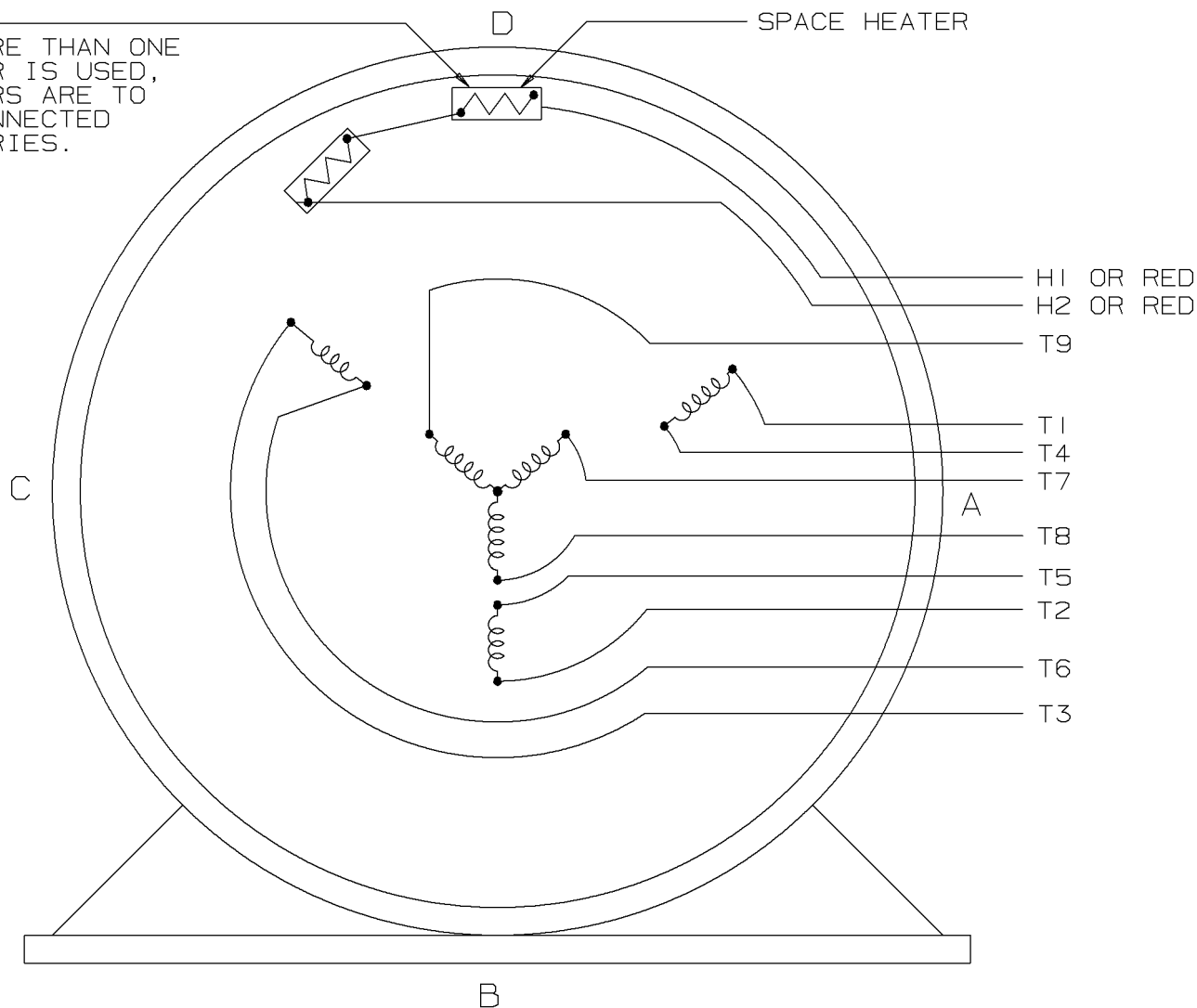
Technical Specifications

Connection Drawing	EE7308G	Outline Drawing	NONE
--------------------	---------	-----------------	------

This is an uncontrolled document once printed or downloaded and is subject to change without notice. Date Created:10/13/2022

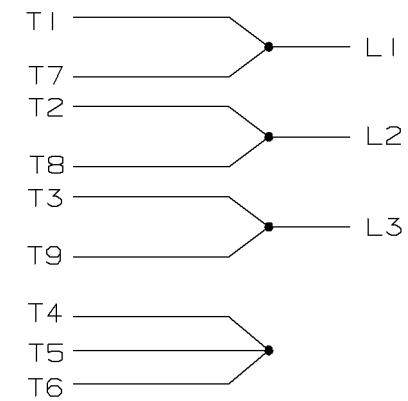
A- EE7308G

NOTE:
IF MORE THAN ONE
HEATER IS USED,
HEATERS ARE TO
BE CONNECTED
IN SERIES.

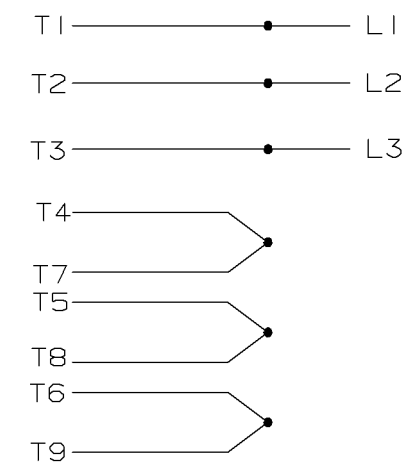



VIEW OF TERMINAL END

LOW VOLTAGE



HIGH VOLTAGE



				✓ MAX. SURFACE ROUGHNESS UNLESS NOTED OTHERWISE	UNLESS OTHERWISE SPECIFIED DIMENSIONS ARE IN INCHES TOL. ON XX± XXX±.005 XXXX±.0005 ANGLES±						
				MATL SPEC				DRAWN BY MSG	06-20-2000		
				FINISH				CHKD BY ML	06-20-2000		
4	06-22-2000	REDRAWN ON CAD	MU31540	MSG	REFERENCE DRW.	WAUSAU, WISCONSIN 54401			APPD BY ET	06-22-2000	
REV	DATE	CHANGE		NAME	PART NAME CONNECTION DIAGRAM THREE PHASE - DUAL VOLTAGE MOTOR					DRWG NO A- EE7308G	
		SHOP BOOK	PURCHASED	DISTRIBUTION - WA - LB - WP - LM - BR			CADD FILE NO.	EE7308G			

SHOP BOOK

PURCHASED

DISTRIBUTION - WA - LB - WP - LM - BR

CADD FILE NO.

EE7308G

```
ERROR: undefined
OFFENDING COMMAND: reinitiali
STACK:
```