

PRODUCT INFORMATION PACKET

Model No: LM34630

Catalog No: LM34630

LM34630..200/150HP..1800/1500RPM.445T.TEFC.460//380V.3PH.60/50HZ.CONT.40C.1.15/1.0SF.RIGID.....

....

Regal and are trademarks of Regal Rexnord Corporation or one of its affiliated companies.
©2022 Regal Rexnord Corporation, All Rights Reserved. MC017097E



Nameplate Specifications

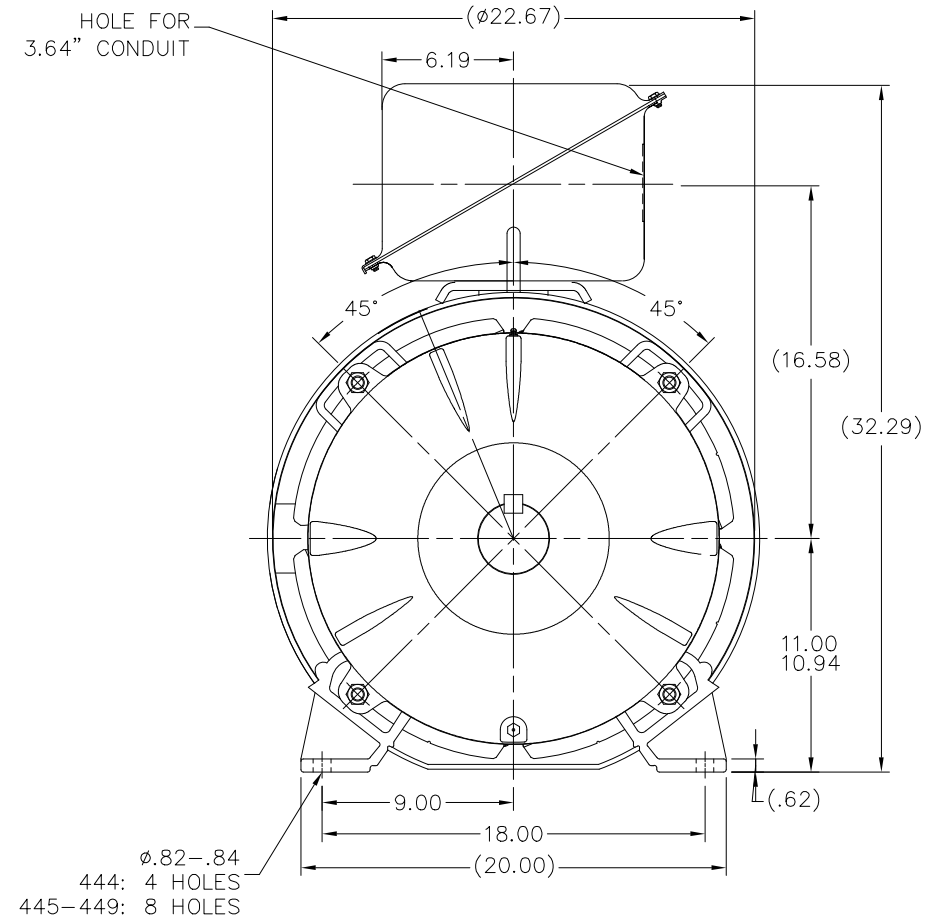
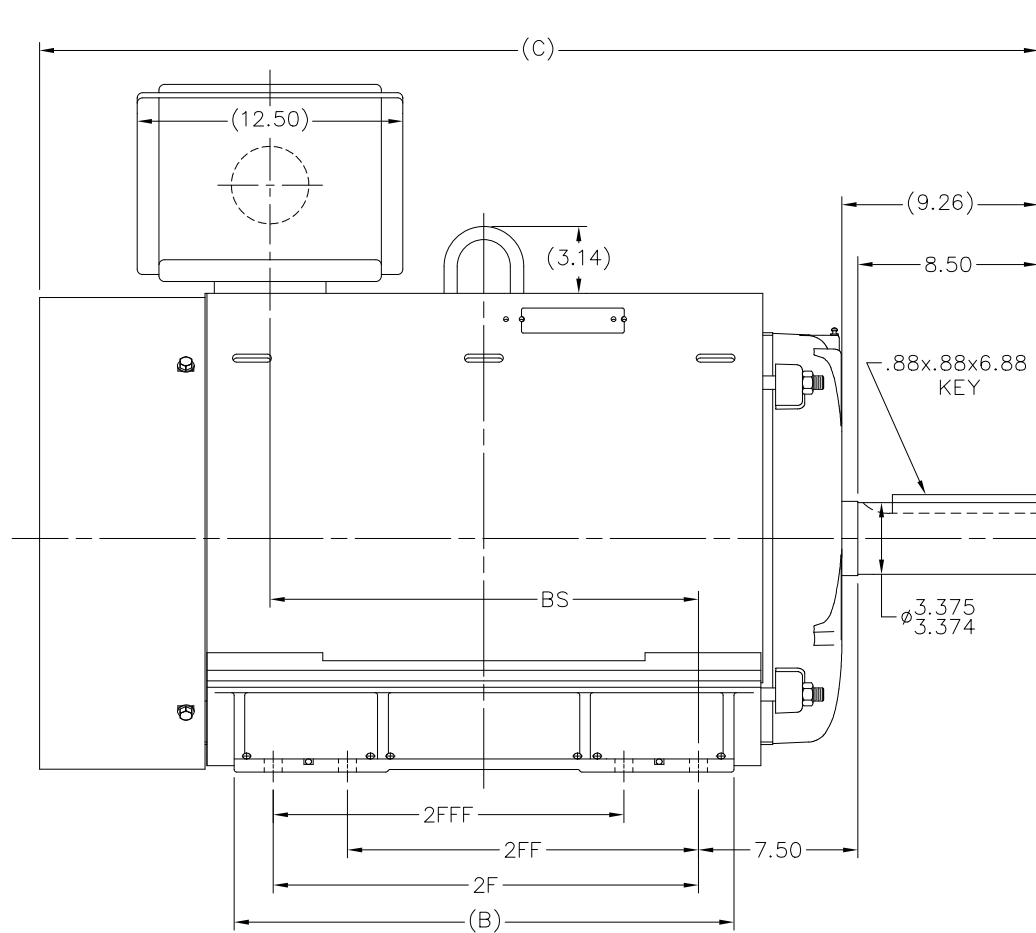
Output HP	200 Hp	Output KW	149.0 kW
Frequency	60 Hz	Voltage	460 V
Current	227.0 A	Speed	1788 rpm
Service Factor	1.15	Phase	3
Efficiency	96.2 %	Power Factor	86
Duty	Continuous	Insulation Class	F
Design Code	B	KVA Code	G
Frame	445T	Enclosure	Totally Enclosed Fan Cooled
Thermal Protection	Thermostat	Ambient Temperature	40 °C
Drive End Bearing Size	6318	Opp Drive End Bearing Size	6315
UL	Recognized	CSA	Y
CE	Y	IP Code	43
Number of Speeds	1		

Technical Specifications

Electrical Type	Squirrel Cage Induction Run	Starting Method	Wye Start Delta Run
Poles	4	Rotation	Reversible
Resistance Main	.0117 Ohms	Mounting	Rigid Base
Motor Orientation	Horizontal	Drive End Bearing	Ball
Opp Drive End Bearing	Ball	Frame Material	Rolled Steel
Shaft Type	T	Assembly/Box Mounting	F3
Outline Drawing	XK2F5SS1-2317	Connection Drawing	A-EE7340D

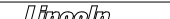
This is an uncontrolled document once printed or downloaded and is subject to change without notice. Date Created:11/10/2022

XK2F5SS1



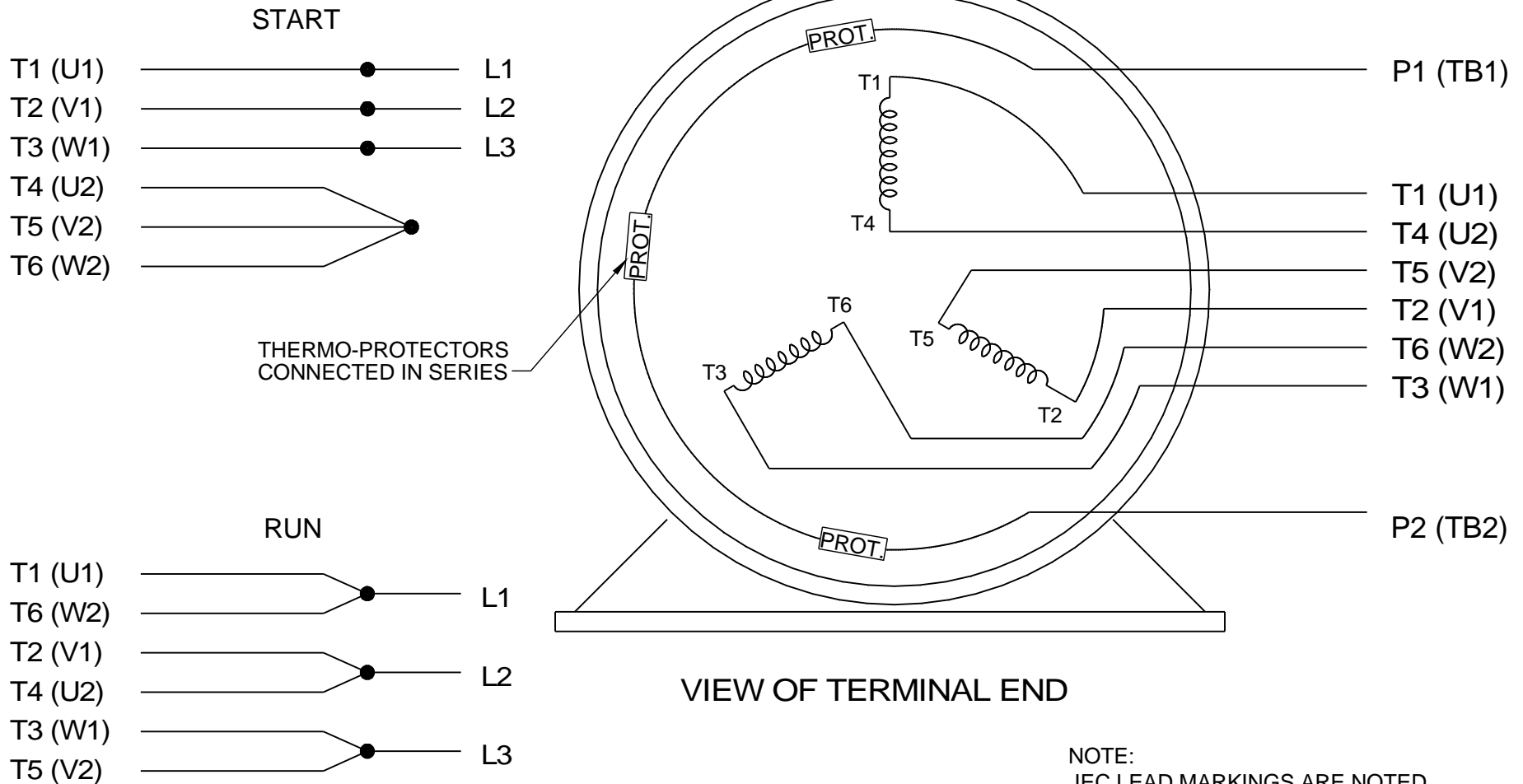
NOTES:

1. CONDUIT BOX CAN BE ROTATED IN 90° STEPS.
2. NAMEPLATES TO BE READ FROM CONDUIT BOX SIDE OF MOTOR.



SIDE OF MOTOR.															TOLERANCES UNLESS SPECIFIED					DRAWN TJW 8/11/2008											
												DEC.			INCHES					CHK ML 8/11/2008											
												.X			±.1					APPD DD 8/11/2008											
												.XX			±.03			TITLE OUTLINE NEMA MOTORS		SCALE 1=6											
									C Change from 3C223-K4 to 557963 fan guard			MK 11/19/2021			VJR .XXX ±.005			440T TEFC UEI		REF XK2F1SS1											
									D CONDUIT BOX ROTATED TO 180 DEGREES			JVD 08/19/21			SC .XXXX ±.0005			MAT'L		FMF MU87303											
									NO. REVISION			BY & DATE			CHK ANG ±7°30"			FINISH		PREV											
									THIS DRAWING IN DESIGN AND DETAIL IS OUR PROPERTY AND MUST NOT BE USED EXCEPT IN CONNECTION WITH OUR WORK. ALL RIGHTS OF DESIGN AND INVENTION ARE RESERVED. THIS IS AN ELECTRONICALLY GENERATED DOCUMENT - DO NOT SCALE THIS PRINT											RFP 8/11/2008.		CAD FILE XK2F5SS1		SIZE B		DRAWING NO. XK2F5SS1		PAGE OF		REV. D	
DASH	FRAME	C	AG	B	2F	2FF	2FFF	BS																							
2117	444T	41.58	--	18.00	14.50			14.62																							
2317	445T	43.58	--	20.00	16.50	14.50	14.50	16.64																							
2667	447T	47.08	--	23.50	20.00	16.50	16.50	20.14																							
3167	449T	52.08	--	28.50	25.00	20.00	20.00	25.14																							

THIS DRAWING IN DESIGN AND DETAIL IS OUR PROPERTY AND MUST NOT BE USED EXCEPT IN CONNECTION WITH OUR WORK ALL RIGHTS OF DESIGN AND INVENTION ARE RESERVED THIS IS AN ELECTRONICALLY GENERATED DOCUMENT - DO NOT SCALE THIS PRINT

THREE PHASE WYE START DELTA RUN



NOTE:
IEC LEAD MARKINGS ARE NOTED
IN PARANTHESES

DRAWING REVISION F	REVISION BY JWO	DATE 03-23-2016		DRAWN BY KL	 Regal Beloit America, Inc.			
ECO ECO-0098081	APPROVED BY T. VUE	DATE 03-23-2016		DATE 02-11-1999				
ECO DESCRIPTION REVISED IEC AUX. MARKINGS				APPROVED BY DJK	DESCRIPTION CONN DIAGRAM-EXTERNAL			
<p>COPYRIGHT REGAL BELOIT AMERICA, INC. ALL RIGHTS RESERVED. PROPRIETARY AND CONFIDENTIAL INFORMATION - THIS DOCUMENT IS THE PROPERTY OF REGAL BELOIT AMERICA, INC. ("OWNER") AND CONTAINS OWNER'S PROPRIETARY INFORMATION. ANY PERSON, CORPORATION OR OTHER FIRM RECEIVING IT IS DEEMED, BY RECEIVING IT, TO AGREE THAT IT, AND/OR ANY PART OF IT, SHALL NOT BE DISCLOSED TO ANY PERSON, CORPORATION OR OTHER ENTITY, DUPLICATED, AND/OR USED, EXCEPT AS EXPRESSLY APPROVED IN WRITING IN ADVANCE BY OWNER. THIS DOCUMENT SHALL BE RETURNED TO OWNER UPON REQUEST. IT MAY BE SUBJECT TO CERTAIN RESTRICTIONS UNDER APPLICABLE EXPORT CONTROL LAWS AND REGULATIONS.</p>				DATE 02-11-1999	3Ø- WYE START DELTA RUN			
				REFERENCE	MATERIAL		PROCESS/FINISH	
				THIRD ANGLE PROJECTION		SIZE A	DRAWING NUMBER EE7340D	SHEET 1 OF 1

EC Declaration of Conformity

The undersigned representing
the manufacturer:

Regal Beloit America
100 East Randolph St.
Wausau, WI 54401

and the authorized representative
established within the Community:

Marathon Electric UK
6F Thistleton Road Ind. Estate
Market Overton
Oakham, Rutland LE15 7PP UK

are committed to providing customers with products that comply with applicable regulations and international protocols to which they are subject, including the requirements of the European Parliament Directive on the Harmonization of the laws relating to electrical equipment designed for use within certain voltage limits (2014/35/EU).

Regal Beloit America declares that the following product(s), to which this declaration relates, are in conformity with the relevant sections of the EC standards listed below.

This statement supersedes any statements previously issued pertaining to the product(s) listed below and is subject to change without notice.

Model No : LM34630

(Model No. may contain prefix and/or suffix characters)

Catalog No : LM34630

Rework No : N/A

Directives :

Low Voltage Directive 2014/35/EU

Harmonized Standards Used :

EN 60034-1: 2010 (IEC 60034-1: 2010)

EN 60034-5: 2001/A1:2007 (IEC 60034-5: 2000/A1:2006)

Authorized Representative:



Michael A. Logsdon
Vice President, Technology

Authorized Representative in the Community:



Julian Clark
Marketing Engineer

Created on 10/11/2022

CE 22