

PRODUCT INFORMATION PACKET



Model No: LM34587
Catalog No: LM34587

LM34587..200/150HP..3600/3000RPM.444TSC.DP.460/380V.3PH.60/50HZ.CONT.40C.1.15SF.RIGID.....

Regal and Leeson are trademarks of Regal Rexnord Corporation or one of its affiliated companies.
©2023 Regal Rexnord Corporation, All Rights Reserved. MC017097E





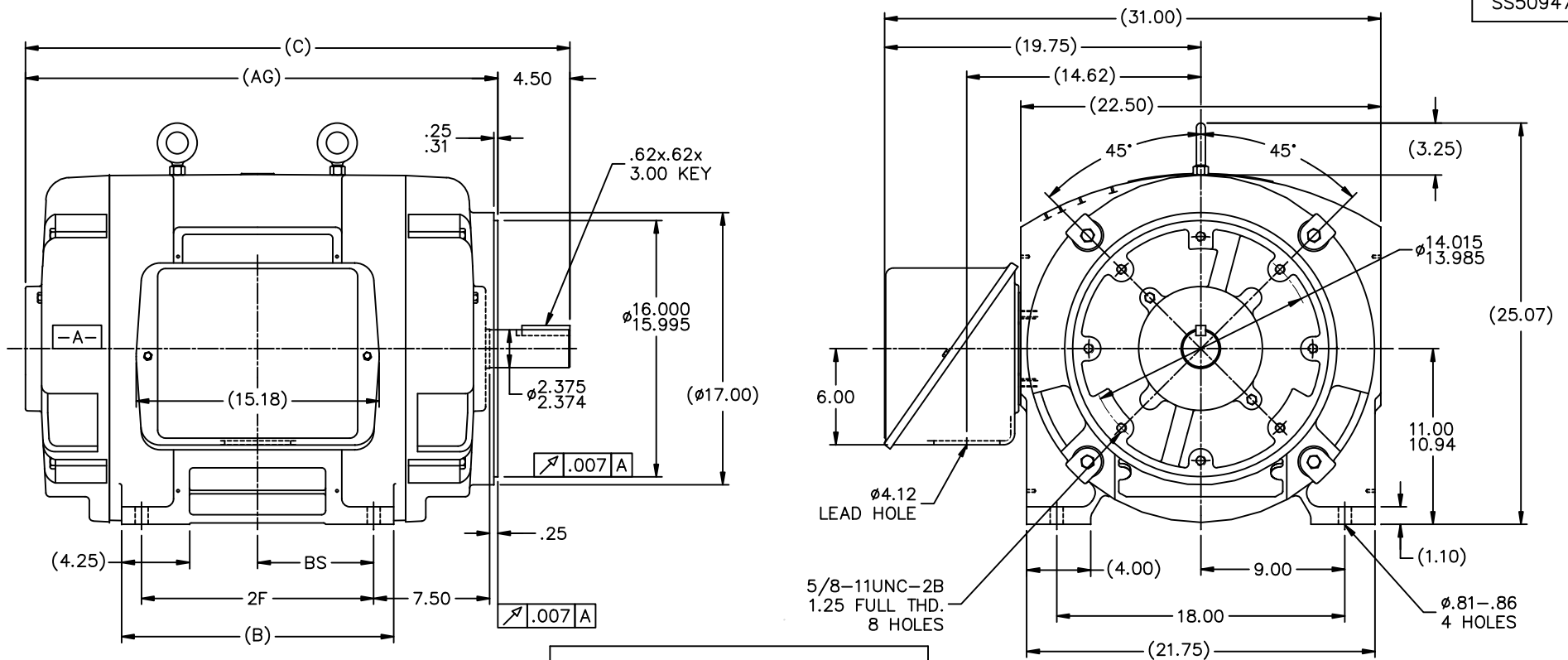
Nameplate Specifications

Phase	3	Output HP	200 & 150 Hp
Output KW	149.0 & 112.0 kW	Voltage	460 & 380 V
Speed	3560 & 2960 rpm	Service Factor	1.15 & 1.15
Frame	444TSC	Enclosure	Drip Proof
Thermal Protection	No Protection	Efficiency	95 & 94.5 %
Ambient Temperature	40 °C	Frequency	60 & 50 Hz
Current	220 & 200 A	Power Factor	90
Duty	Continuous	Insulation Class	F
Design Code	B	KVA Code	F
Drive End Bearing Size	6313	Opp Drive End Bearing Size	6313
UL	Recognized	CSA	Y
CE	Y	IP Code	12
Number of Speeds	1		

Technical Specifications

Electrical Type	Squirrel Cage Induction Run	Starting Method	Part Wdg Start & Wye Start Delta Run
Poles	2	Rotation	Reversible
Resistance Main	.0285 Ohms	Mounting	Rigid Base
Motor Orientation	Horizontal	Drive End Bearing	Ball
Opp Drive End Bearing	Ball	Frame Material	Cast Iron
Shaft Type	TS	Assembly/Box Mounting	F1/F2 CAPABLE
Outline Drawing	B-SS509474LN-1850	Connection Drawing	A-EE7300BH

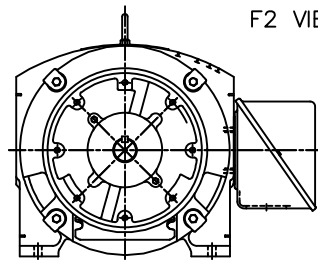
This is an uncontrolled document once printed or downloaded and is subject to change without notice. Date Created:06/23/2023




NOTES:

1. CONDUIT BOX CAN BE ROTATED IN 90° STEPS.
2. CONDUIT BOX CAN BE MOUNTED ON OPPOSITE SIDE BY REMOVING BRACKETS AND TURNING FRAME 180°.
3. NAMEPLATES TO BE READ FROM CONDUIT BOX SIDE OF MOTOR

F2 VIEW



SIDE OF MOTOR											TOLERANCES UNLESS SPECIFIED				DRAWN KL 05-19-2004							
											DEC.	INCHES			CHK	ML	06-11-2004					
											.X	±.1	APPD JES 06-11-2004									
											.XX	±.03	SCALE 5=32									
											.XXX	±.005	TITLE OUTLINE 440TSC FR. - DR.PR. - C'FACE			REF						
DASH	FRAME	B	C	AG	2F	BS	1	ADDED F2 VIEW	CP 09-08-2011	CMN	.XXXX	±.0005	MAT'L	FMF	MU60439							
1850	444TSC	17.00	34.00	29.50	14.50	7.25	NO.	REVISION		BY & DATE		CHK	ANG	±7°30"	FINISH	PREV						
2050	445TSC	19.00	36.00	31.50	16.50	8.25	THIS DRAWING IN DESIGN AND DETAIL IS OUR PROPERTY AND MUST NOT BE USED EXCEPT IN CONNECTION WITH OUR WORK. ALL RIGHTS OF DESIGN AND INVENTION ARE RESERVED. THIS IS AN ELECTRONICALLY GENERATED DOCUMENT - DO NOT SCALE THIS PRINT									RFP	08-11-2004	CAD FILE SS509474LN	SIZE	DRAWING NO.	PAGE OF	REV.
											DIST	WA			B	SS509474LN						

THIS DRAWING IN DESIGN AND DETAIL IS OUR PROPERTY AND MUST NOT BE USED EXCEPT IN CONNECTION WITH OUR WORK. ALL RIGHTS OF DESIGN AND INVENTION ARE RESERVED. THIS IS AN ELECTRONICALLY GENERATED DOCUMENT - DO NOT SCALE THIS PRINT



				TOLERANCES UNLESS SPECIFIED		 REGAL - BELOIT CORPORATION	DRAWN RJW 02-11-2005							
				DEC.	INCHES		CHK	ML	02-11-2005					
				.X	±.1		APPD	GK	02-11-2005					
				.XX	±.02		TITLE CONNECTION DIAGRAM 12 LEAD- SINGLE VOLTAGE							
D	CHANGED TO REGAL TITLE BLOCK	ECO-0108299	WGJ 08/22/2016	EMH	.XXX ±.005	SCALE								
1	ADDED IEC TERMINAL MARKINGS	CN 41429	JJB 05/24/2007	ML	.XXXX ±.0005	MAT'L.				REF				
NO.	REVISION		BY & DATE	CHK	ANG	±7'30"	FINISH				FMF			
											PREV			
THIS DRAWING IN DESIGN AND DETAIL IS OUR PROPERTY AND MUST NOT BE USED EXCEPT IN CONNECTION WITH OUR WORK ALL RIGHTS OF DESIGN AND INVENTION ARE RESERVED THIS IS AN ELECTRONICALLY GENERATED DOCUMENT - DO NOT SCALE THIS PRINT				RFP		02-11-2005	CAD FILE		ee7300bh	SIZE	DRAWING NO.	PAGE	OF	REV.
				DIST		LB			A	EE7300BH				C