

# PRODUCT INFORMATION PACKET



Model No: LM34573  
Catalog No: LM34573  
250 HP General Purpose Motor, 3 phase, 1200 RPM, 460 V, 449T Frame, TEFC  
General Purpose Motors



Regal and Leeson are trademarks of Regal Rexnord Corporation or one of its affiliated companies.  
©2021 Regal Rexnord Corporation, All Rights Reserved. MC017097E





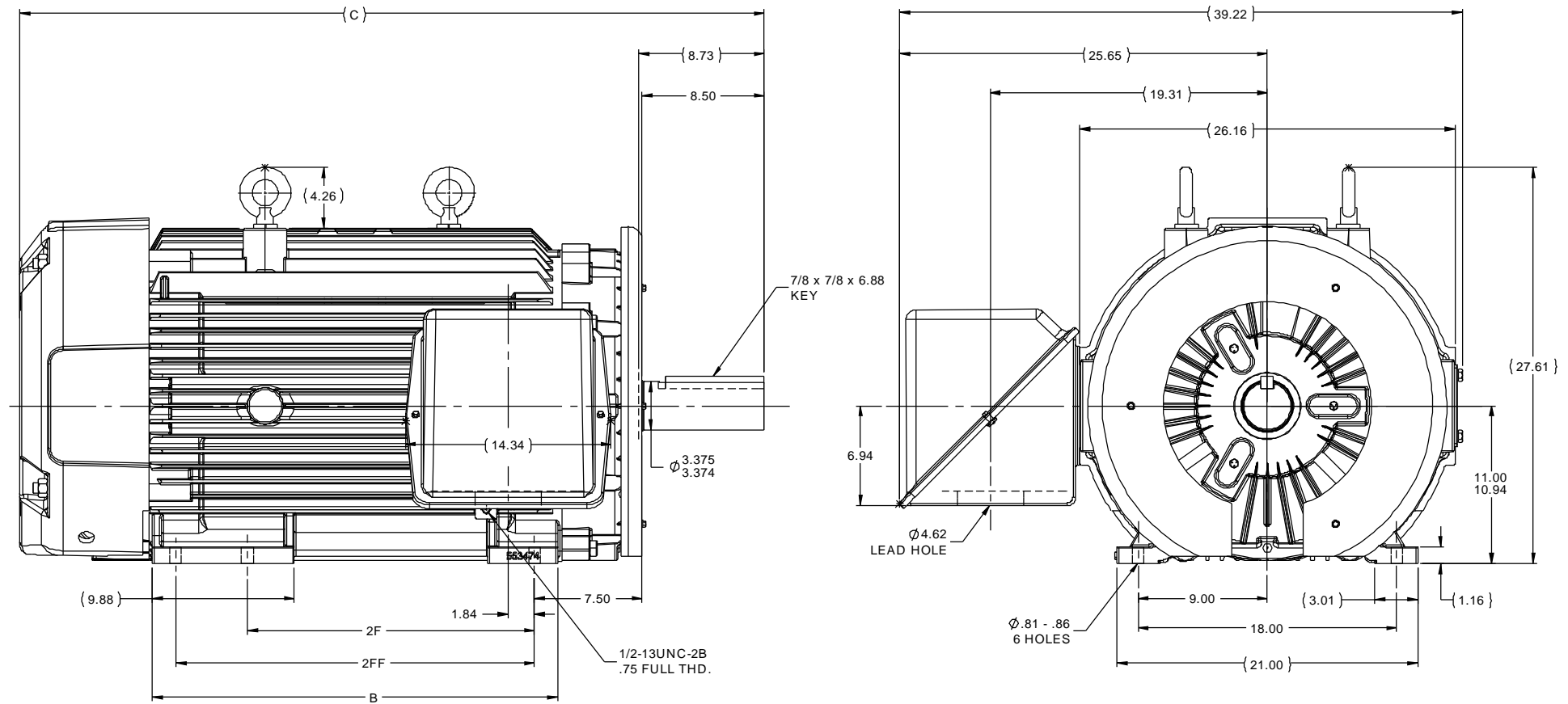
### Nameplate Specifications

Output HP	250 Hp	Output KW	187.0 kW
Frequency	60 Hz	Voltage	460 V
Current	300.0 A	Speed	1190 rpm
Service Factor	1.15	Phase	3
Efficiency	95.8 %	Power Factor	81
Duty	Continuous	Insulation Class	H
Design Code	B	KVA Code	G
Frame	447/449T	Enclosure	Totally Enclosed Fan Cooled
Thermal Protection	No	Ambient Temperature	40 °C
Drive End Bearing Size	6319	Opp Drive End Bearing Size	6318
UL	Recognized	CSA	Y
CE	Y	IP Code	43
Number of Speeds	1		

### Technical Specifications

Electrical Type	Squirrel Cage Induction Run	Starting Method	Wye Start Delta Run
Poles	6	Rotation	Reversible
Resistance Main	.012 Ohms	Mounting	Rigid Base
Motor Orientation	Horizontal	Drive End Bearing	Ball
Opp Drive End Bearing	Ball	Frame Material	Cast Iron
Shaft Type	T	Overall Length	51.85 in
Frame Length	28.75 in	Shaft Diameter	3.375 in
Shaft Extension	8.5 in	Assembly/Box Mounting	F1/F2 CAPABLE
Outline Drawing	SS519824LN-2875	Connection Drawing	EE7340

This is an uncontrolled document once printed or downloaded and is subject to change without notice. Date Created:10/12/2021



# NOTES:

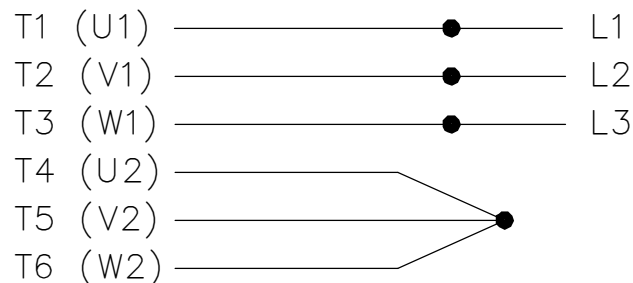
1. C. BOX CAN BE ROTATED IN 90° STEPS.
2. NAMEPLATES TO BE READ FROM CONDUIT BOX SIDE OF MOTOR.

DASH	FRAME	B	C	2F	2FF
2875	447T	28.25	51.85	20.00	---
2875	449T	28.25	51.85	---	25.00

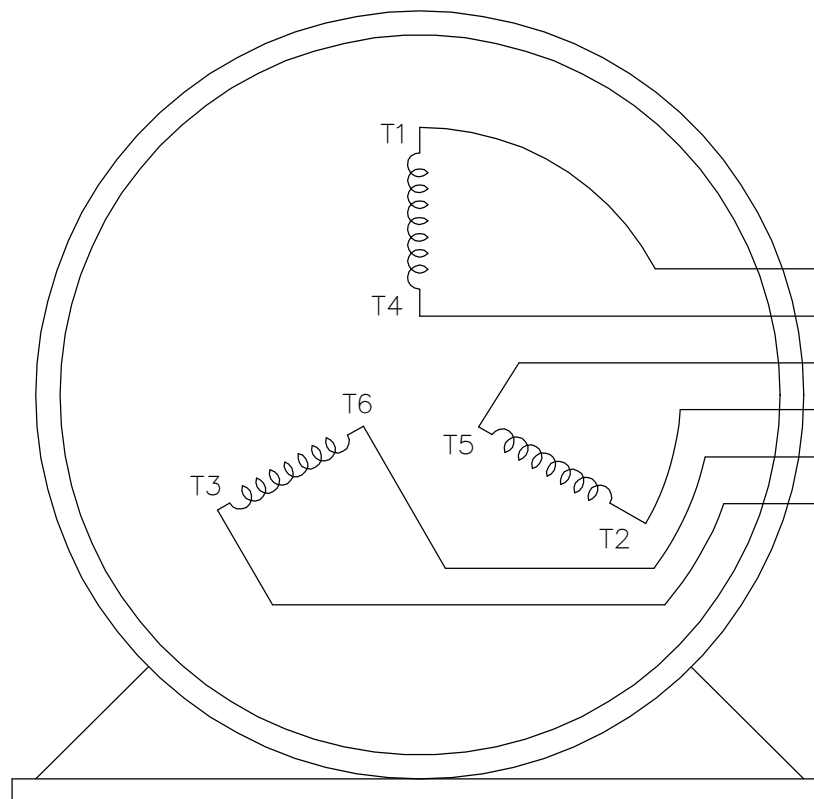
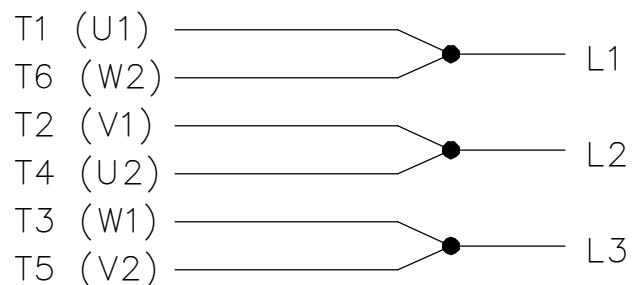
TOLERANCES UNLESS SPECIFIED				Lincoln		DRAWN KL 06-30-2003	
DEC INCHES				NOTES		CHK GFH 06-30-2003	
X ±.1						APPR JES 06-30-2003	
XX ±.03				TITLE OUTLINE - TEFC		SCALE 1:7	
XXX ±.005				447/9T FR. - FLAT BRACKETS - W/ BAFFLE		REF B-SS517520	
XXXX ±.0005				MAT'L		FMF	
±7°30"				FINISH		PAGE OF	
RFP				PREV		SIZE B	
NETWORK FILE NAME SS519824LN						DRAWING NO SS519824LN	
THIRD ANGLE PROJECTION						REV 2	

THREE PHASE  
WYE START DELTA RUN

START



RUN



VIEW OF TERMINAL END

NOTE:  
IEC LEAD MARKINGS ARE NOTED  
IN PARANTHESES

DRAWING REVISION F	REVISION BY RTT	REV DATE/© DATE 05-29-2019	TOLERANCES (EXCEPT AS NOTED): <div>DEC. INCH mm ANGLE</div> <div>.X ±0.1 [±3] ±7° 30"</div> <div>.XX ±0.02 [±0.5]</div> <div>.XXX ±0.005 [±0.13]</div> <div>.XXXX ±0.0005 [±0.013]</div> <div>REMOVE BURRS &amp; BREAK SHARP</div> <div>EDGES: .003/.015 [.08/.38] X 45 °</div> <div>CORNER FILLETS: R.02 [.5]</div> <div>MACHINED SURFACES: 200/ 5.1</div> <div>INCH mm</div> <div>mm DIMENSIONS IN [BRACKETS]</div> <div>ARE FOR REFERENCE ONLY</div>	DRAWN BY LZ	<div><div>REGAL®</div><div>Regal Beloit America, Inc.</div></div>		
ECO ECO-0167538	APPROVED BY JWA	DATE 05-29-2019		DATE 01-06-1994	<div>DESCRIPTION</div> <div>CONNECTION DIAGRAM</div> <div>3&lt;MOD-DIAM&gt; - WYE START DELTA RUN</div>		
ECO DESCRIPTION UPDATED TITLE BLOCK				APPROVED BY GK			
<div>COPYRIGHT (PER REVISION DATE) REGAL BELOIT AMERICA, INC. ALL RIGHTS RESERVED. PROPRIETARY AND CONFIDENTIAL INFORMATION - THIS DOCUMENT IS THE PROPERTY OF REGAL BELOIT AMERICA, INC. ("OWNER") AND CONTAINS OWNER'S PROPRIETARY INFORMATION. ANY PERSON, CORPORATION OR OTHER FIRM RECEIVING IT IS DEEMED, BY RECEIVING IT, TO AGREE THAT IT, AND/OR ANY PART OF IT, SHALL NOT BE DISCLOSED TO ANY PERSON, CORPORATION OR OTHER ENTITY, DUPLICATED, AND/OR USED, EXCEPT AS EXPRESSLY APPROVED IN WRITING IN ADVANCE BY OWNER. THIS DOCUMENT SHALL BE RETURNED TO OWNER UPON REQUEST. IT MAY BE SUBJECT TO CERTAIN RESTRICTIONS UNDER APPLICABLE EXPORT CONTROL LAWS AND REGULATIONS.</div>				DATE 01-18-1994	MATERIAL		PROCESS/FINISH
				REFERENCE	SIZE A		DRAWING NUMBER EE7340
			THIRD ANGLE PROJECTION	<div><div></div></div>			



P.O. BOX 8003  
WAUSAU, WI 54401-8003  
PH. 715-675-3311

DATA VOLTS: 460

### CERTIFICATION DATA SHEET

CONN. DIAGRAM: A-EE7340

CAT #: LM34573

OUTLINE: B-SS519824LN-2875

WINDING: T449626

NONE 13

### TYPICAL MOTOR PERFORMANCE DATA

HP	KW	SYNC RPM	FL RPM	FRAME	ENCLOSURE	TYPE	KVA CODE	DESIGN
250	187	1200	1190	447/449T	TEFC	TFN	G	B

PH	HZ	VOLTS	AMPS	START TYPE	DUTY	INSL	S.F.	AMB	ELEV.
3	60	460	300	VYE START DELTA RU	CONT	H	1.15	40	3300

F.L. EFF	95.8	3/4 LD EFF	96.0	1/2 LD EFF	95.4	GTD EFF	ELECT. TYPE
F.L. PF	81.0	3/4 LD PF	79.0	1/2 LD PF	70.0	95.4	SQ CAGE IND RUN

F.L. TORQUE	LR AMPS @ 460 V	L.R. TORQUE	B.D. TORQUE	F.L. RISE (°C)
1,103 LB-FT	1,825	1,825 LB-FT 165%	2,825 LB-FT 256%	65

PRESSURE @ 3	POWER	ROTOR WK²	MAX. LOAD WK²	SAFE STALL TIME	STARTS/HOUR	MOTOR WGT
75 dBA	84 dBA	138 LB-FT²	3600 LB-FT²	25 SEC.	2	3250 LB.

### \*\*\* SUPPLEMENTAL INFORMATION \*\*\*

DE BRACKET TYPE	ODE BRACKET TYPE	MOUNT TYPE	MOTOR ORIENTATION	SEVERE DUTY	HAZARDOUS LOCATION	DRIP COVER	SCREENS	PAINT
STANDARD	STANDARD	RIGID	HORIZONTAL	NO	NONE	NO	NONE	GRAY - LINCOLN

BEARINGS	GREASE	SHAFT TYPE	SPECIAL DE	SPECIAL ODE	SHAFT MATERIAL	FRAME MATERIAL
DE ODE						
BALL BALL	POLYREX EM	T	NONE	NONE	1045 HOT ROLLED (C-204)	CAST IRON
6319 6318						

THERMOSTATS	PROTECTORS	WDG RTD's	BRG RTD's	THERMISTORS	CONTROL	SPACE HEATERS
NONE	NOT	NONE	NONE	NONE	FALSE	NA

R1 (ohms/ph)	R2 (ohms/ph)	X1 (ohms/ph)	X2 (ohms/ph)	Xm (ohms/ph)	VIBRATION (in/sec)	FLOAT
0.008	0.008	0.096	0.129	2.177	0.150	ODE

* N O T E S *		INVERTER TORQUE: NONE INV. HP SPEED RANGE: NONE  ENCODER: NONE NONE NONE
		NONE PPR

DATE: 1/29/2018	BRAKE: NONE	
	NONE	NONE
	FT-LB: NA	
	VOLTAGE: NONE	HZ:
	UL: V-INS, CONST UL REC	

## Data Sheet

Date: 1/29/2018

LM34573



Data @ 460 V

## Motor Load Data

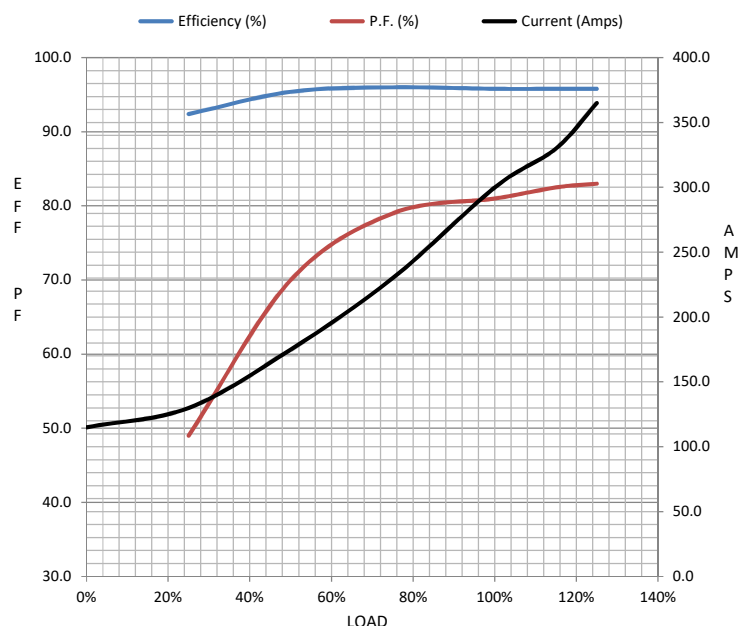
Load	0%	25%	50%	75%	100%	115%	125%	LR	
Current (Amps)	115	130	175	230	300	330	365	1,825	
Torque (ft-lb)	0.00	275	550	825	1,103	1,245	1,385	1,825	
RPM	1200	1196	1194	1192	1190	1,188	1186	0	
Efficiency (%)		92.4	95.4	96.0	95.8	95.8	95.8		
P.F. (%)	3.5	49.0	70.0	79.0	81.0	82.5	83.0	23.0	

## Motor Speed Data

	LR	Pull-Up	BD	Rated	Idle
Speed (RPM)	0	600	1150	1190	1200
Current (Amps)	1,825	1,700	1,125	300	115
Torque (ft-lb)	1,825	1,700	2,825	1,103	0.00

## Information Block

HP	250.0			
Sync. RPM	1200			
Frame	449			
Enclosure	TEFC			
Construction	TFN			
Voltage	460	V		
Frequency	60	Hz		
Design	B			
LR Code letter	G			
Service Factor	1.15			
Temp Rise @ FL	65	° C		
Duty	CONT			
Ambient	40	° C		
Elevation	1,000	feet		
Rotor/Shaft wk²	138	Lb-Ft²		
Ref Wdg	T449626 NONE			
Sound Pressure @ 1M	75	dBA		
VFD Rating	NONE			
Outline Dwg	B-SS519824LN-2875			
Conn. Diag	A-EE7340			
Additional Specifications:				
0				
0				
EQUIV CKT (OHMS / PHASE)				
R1	R2	X1	X2	Xm
0.0080	0.0080	0.0960	0.1290	2.1770



## Speed - Torque Curve

