

PRODUCT INFORMATION PACKET

Model No: LM34555

Catalog No: LM34555

General Purpose Motors, TEFC, 400 HP, 3 Ph, 60 Hz, 460 V, 3575 RPM, 447/449TS



Regal and are trademarks of Regal Rexnord Corporation or one of its affiliated companies.
©2022 Regal Rexnord Corporation, All Rights Reserved. MC017097E

RegalRexnord

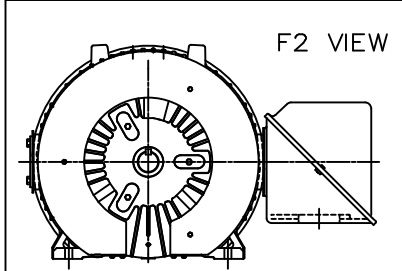
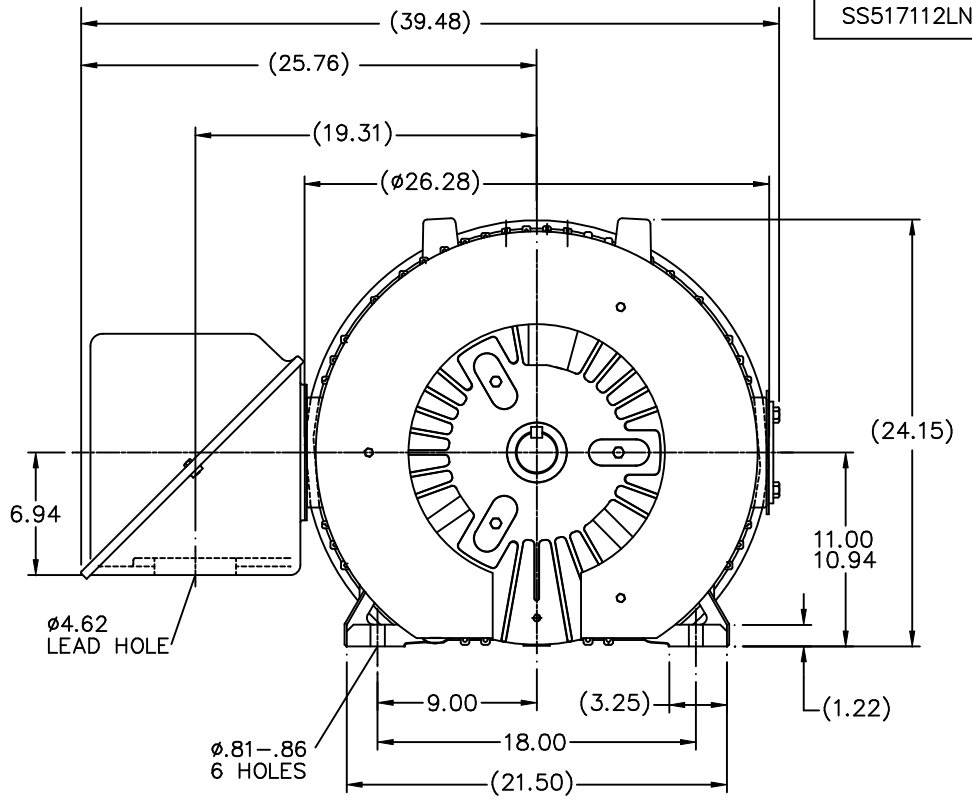
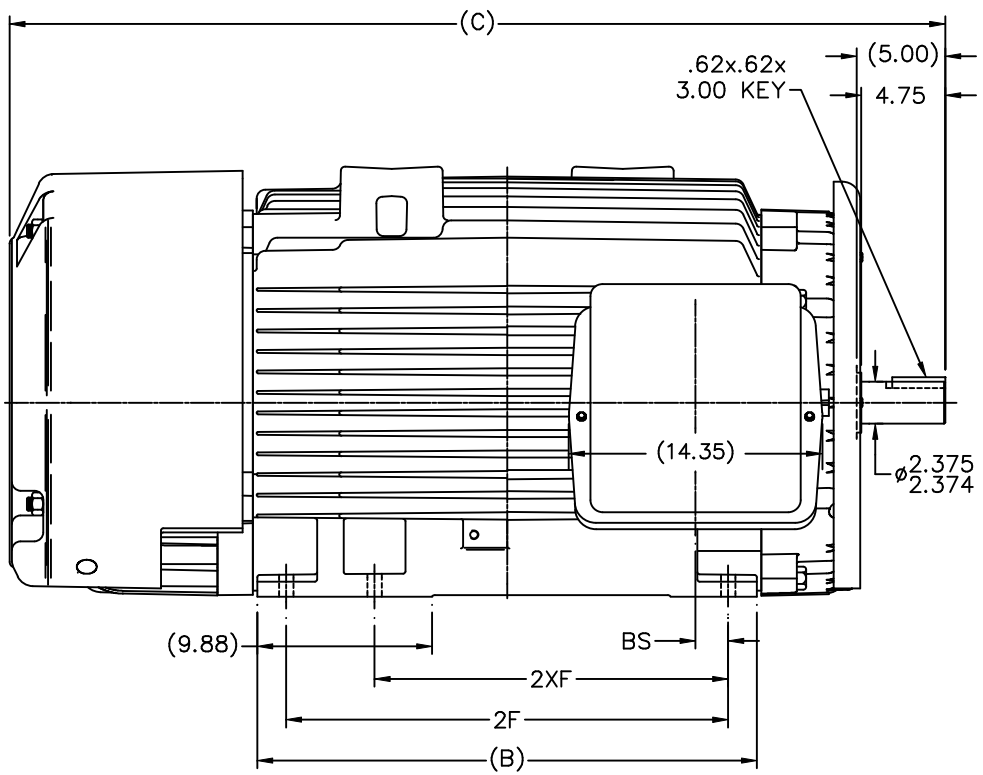
Nameplate Specifications

Output HP	400 Hp	Output KW	300.0 kW
Frequency	60 Hz	Voltage	460 V
Current	435.0 A	Speed	3575 rpm
Service Factor	1	Phase	3
Efficiency	95.8 %	Power Factor	89
Duty	Continuous	Insulation Class	H
Design Code	A	KVA Code	H
Frame	447/449TS	Enclosure	Totally Enclosed Fan Cooled
Thermal Protection	No	Ambient Temperature	40 °C
Drive End Bearing Size	6313	Opp Drive End Bearing Size	6313
UL	Recognized	CSA	Y
CE	Y	IP Code	43
Number of Speeds	1		

Technical Specifications

Electrical Type	Squirrel Cage Induction Run	Starting Method	Wye Start Delta Run
Poles	2	Rotation	Reversible
Resistance Main	.005 Ohms	Mounting	Rigid Base
Motor Orientation	Horizontal	Drive End Bearing	Ball
Opp Drive End Bearing	Ball	Frame Material	Cast Iron
Shaft Type	TS	Overall Length	52.96 in
Frame Length	28.75 in	Shaft Diameter	2.375 in
Shaft Extension	4.75 in	Assembly/Box Mounting	F1/F2 CAPABLE
Outline Drawing	SS517112LN-2875	Connection Drawing	EE7340

SS517112LN



NOTES:
 1. CONDUIT BOX CAN BE ROTATED IN 90° STEPS.
 2. NAMEPLATES TO BE READ FROM CONDUIT BOX SIDE OF MOTOR

DASH	FRAME	B	C	2F	2XF	BS
2875	447TS	28.25	52.96		20.00	1.84
2875	449TS	28.25	52.96	25.00		1.84

		TOLERANCES UNLESS SPECIFIED		Lincoln MOTOR		DRAWN TJB 08-29-2003	
		DEC.	INCHES	CHK	ML	08-29-2003	
		.X	±.1			APPD	GK 08-29-2003
		.XX	±.03			SCALE	1=7
2	REVISED C'BOX & ADDED EXTERNAL BAFFLE	RJW	01-02-2008	ML	.XXX	±.005	TITLE OUTLINE - TEFC
1	NEW DRAWING	TJB	08-29-2003	ML	.XXXX	±.0005	449TS FR. - EXTENDED RATING
NO.	REVISION	BY & DATE	CHK	ANG	±7'30"	FINISH	REF
THIS DRAWING IN DESIGN AND DETAIL IS OUR PROPERTY AND MUST NOT BE USED EXCEPT IN CONNECTION WITH OUR WORK ALL RIGHTS OF DESIGN AND INVENTION ARE RESERVED THIS IS AN ELECTRONICALLY GENERATED DOCUMENT - DO NOT SCALE THIS PRINT				RFP	CAD FILE ss517112ln		PREV
				DIST	WA	SIZE	DRAWING NO. PAGE OF REV.
						B	SS517112LN 2

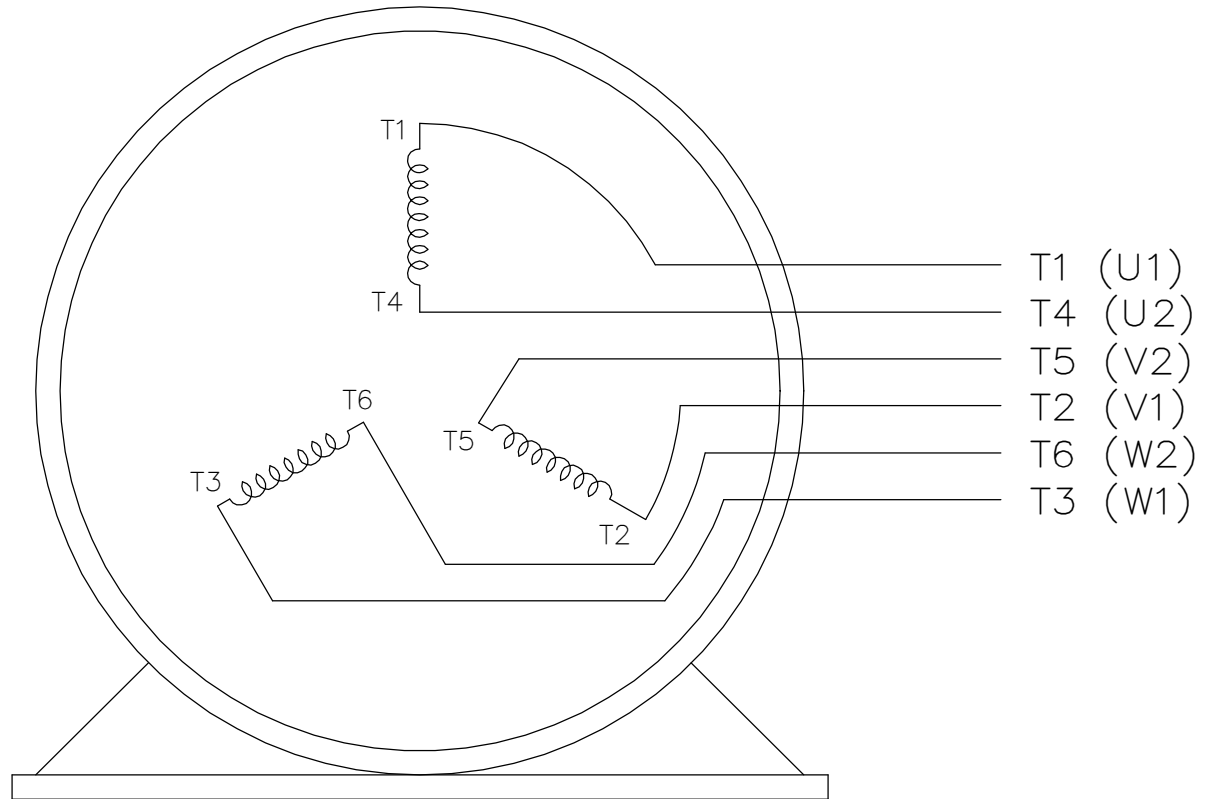
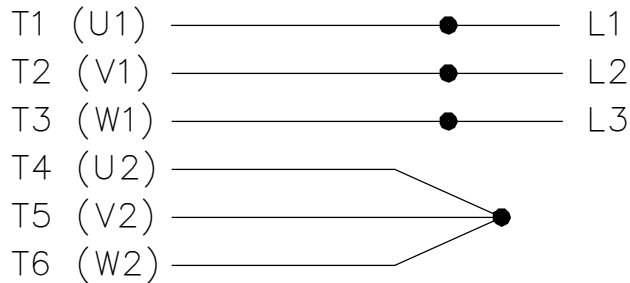
```
ERROR: syntaxerror  
OFFENDING COMMAND: --nostringval--
```

```
STACK:
```

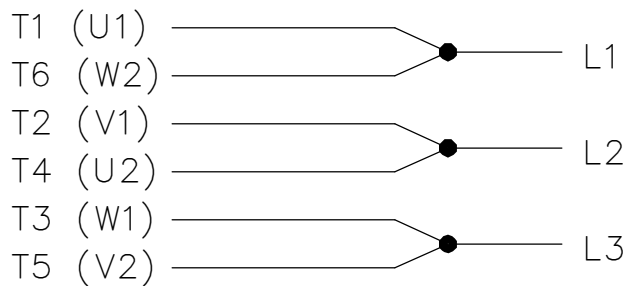
```
/im  
-savelevel-
```

THREE PHASE
WYE START DELTA RUN

START


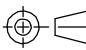


RUN



VIEW OF TERMINAL END

NOTE:
IEC LEAD MARKINGS ARE NOTED
IN PARANTHESES

DRAWING REVISION F		REVISION BY RTT	REV DATE/© DATE 05-29-2019	TOLERANCES (EXCEPT AS NOTED):		DRAWN BY LZ		 Regal Beloit America, Inc.			
ECO ECO-0167538		APPROVED BY JWA	DATE 05-29-2019	DEC. .X INCH ±0.1 mm [±3] ANGLE ±7' 30"	DATE 01-06-1994	DESCRIPTION CONNECTION DIAGRAM 3<MOD-DIAM> - WYE START DELTA RUN					
ECO DESCRIPTION UPDATED TITLE BLOCK				REMOVE BURRS & BREAK SHARP EDGES: .003/.015 [.08/.38] X 45°		APPROVED BY GK		PROCESS/FINISH			
COPYRIGHT (PER REVISION DATE) REGAL BELOIT AMERICA, INC. ALL RIGHTS RESERVED. PROPRIETARY AND CONFIDENTIAL INFORMATION - THIS DOCUMENT IS THE PROPERTY OF REGAL BELOIT AMERICA, INC. ("OWNER") AND CONTAINS OWNER'S PROPRIETARY INFORMATION. ANY PERSON, CORPORATION OR OTHER FIRM RECEIVING IT IS DEEMED, BY RECEIVING IT, TO AGREE THAT IT, AND/OR ANY PART OF IT, SHALL NOT BE DISCLOSED TO ANY PERSON, CORPORATION OR OTHER ENTITY, DUPLICATED, AND/OR USED, EXCEPT AS EXPRESSLY APPROVED IN WRITING IN ADVANCE BY OWNER. THIS DOCUMENT SHALL BE RETURNED TO OWNER UPON REQUEST. IT MAY BE SUBJECT TO CERTAIN RESTRICTIONS UNDER APPLICABLE EXPORT CONTROL LAWS AND REGULATIONS.				CORNER FILLETS: R.02 [.5]		DATE 01-18-1994		MATERIAL			
				MACHINED SURFACES: 200/ 5.1		REFERENCE		SIZE		DRAWING NUMBER	
				mm DIMENSIONS IN [BRACKETS] ARE FOR REFERENCE ONLY		THIRD ANGLE PROJECTION 		A		EE7340	
								SHEET 1 OF 1			



1051 CHEYENNE AVE.
GRAFTON, WI 53024
PH. 262-277-8810

DATA VOLTS: 460

CERTIFICATION DATA SHEET

CONN. DIAGRAM: A-EE7340
OUTLINE: B-SS517112LN-2875
WINDING: T449261

CAT #: LM34555

NONE 1

TYPICAL MOTOR PERFORMANCE DATA

HP	KW	SYNC RPM	FL RPM	FRAME	ENCLOSURE	TYPE	KVA CODE	DESIGN
400	298	3600	3575	447/449TS	TEFC	TFN	H	A

PH	HZ	VOLTS	AMPS	START TYPE	DUTY	INSL	S.F.	AMB	ELEV.
3	60	460	435	VVE START DELTA RUN	CONT	H	1.15	40	3300

F.L. EFF	95.8	3/4 LD EFF	95.8	1/2 LD EFF	95.4	GTD EFF	ELECT. TYPE
F.L. PF	89.0	3/4 LD PF	86.0	1/2 LD PF	79.0	95.4	SQ CAGE IND RUN

F.L. TORQUE	LR AMPS @ 460 V	L.R. TORQUE	B.D. TORQUE	F.L. RISE (° C)
588 LB-FT	3,500	1,225 LB-FT 208%	1,900 LB-FT 323%	88

PRESSURE @ 3	SOUND	POWER	ROTOR WK²	MAX. LOAD WK²	SAFE STALL TIME	STARTS/HOUR	MOTOR WGT
82 dBA	91 dBA		61.0 LB-FT²	0 LB-FT²	10 SEC.	0	3250 LB.

***** SUPPLEMENTAL INFORMATION *****

DE BRACKET TYPE	ODE BRACKET TYPE	MOUNT TYPE	MOTOR ORIENTATION	SEVERE DUTY	HAZARDOUS LOCATION	DRIP COVER	SCREENS	PAINT
STANDARD	STANDARD	RIGID	HORIZONTAL	NO	NONE	NO	NONE	WATTS AVER

BEARINGS		GREASE	SHAFT TYPE	SPECIAL DE	SPECIAL ODE	SHAFT MATERIAL	FRAME MATERIAL
DE	ODE	POLYREX EM	TS	NONE	NONE	1045 HOT ROLLED (C-204)	CAST IRON
BALL	BALL						
6313	6313						

THERMOSTATS	PROTECTORS	WDG RTD's	BRG RTD's	THERMISTORS	CONTROL	SPACE HEATERS
NONE	NOT	NONE	NONE	NONE	FALSE	NA

R1 (ohms/ph)	R2 (ohms/ph)	X1 (ohms/ph)	X2 (ohms/ph)	Xm (ohms/ph)	VIBRATION (in/sec)	FLOAT
0.005	0.004	0.047	0.059	2.073	0.150	ODE

* N O T E S *	INVERTER TORQUE: NONE INV. HP SPEED RANGE: NONE					
	ENCODER: NONE NONE NONE PPR					
	BRAKE: NONE NONE NONE					
	FT-LB: NA VOLTAGE: NONE HZ:					
	UL: V-INS, CONST UL REC					

DATE: 9/11/2018

Data Sheet

Date: 9/11/2018

LM34555



Data @ **460 V**

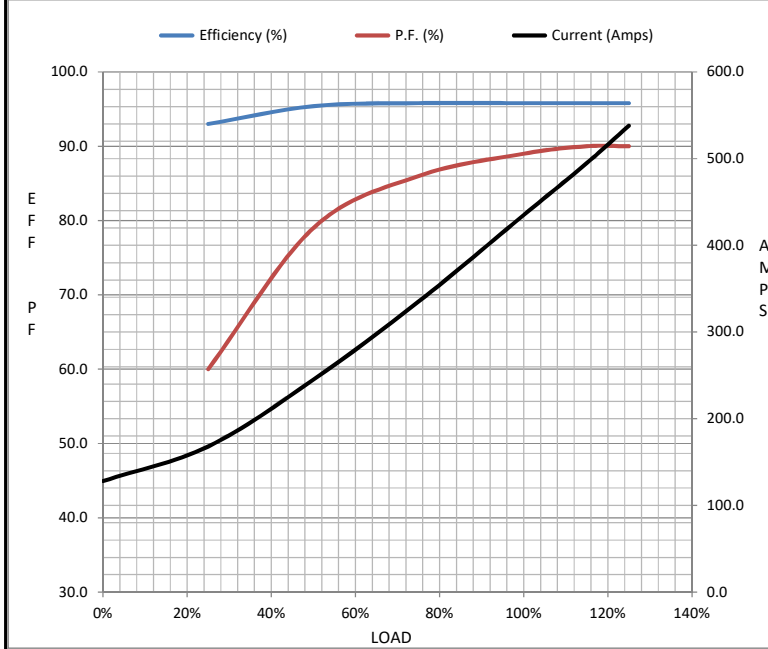
Motor Load Data

Load	0%	25%	50%	75%	100%	115%	125%	LR
Current (Amps)	128	168	245	335	435	495	538	3,500
Torque (ft-lb)	0.00	146	293	440	588	677	737	1,225
RPM	3600	3595	3588	3582	3575	3,570	3568	0
Efficiency (%)		93.0	95.4	95.8	95.8	95.8	95.8	
P.F. (%)	4.5	60.0	79.0	86.0	89.0	90.0	90.0	26.0

Motor Speed Data

	LR	Pull-Up	BD	Rated	Idle
Speed (RPM)	0	1800	3450	3575	3600
Current (Amps)	3,500	3,250	2,100	435	128
Torque (ft-lb)	1,225	950	1,900	588	0.00

Information Block				
HP	400.0			
Sync. RPM	3600			
Frame	449			
Enclosure	TEFC			
Construction	TFN			
Voltage	460 V			
Frequency	60 Hz			
Design	A			
LR Code letter	H			
Service Factor	1.0			
Temp Rise @ FL	88 ° C			
Duty	CONT			
Ambient	40 ° C			
Elevation	1,000 feet			
Rotor/Shaft wk ²	61.0 Lb-Ft ²			
Ref Wdg	T449261 NONE			
Sound Pressure @ 1M	82 dBA			
VFD Rating	NONE			
Outline Dwg	B-SS517112LN-2875			
Conn. Diag	A-EE7340			
Additional Specifications:				
0				
0				
EQUIV CKT (OHMS / PHASE)				
R1	R2	X1	X2	Xm
0.0050	0.0040	0.0470	0.0590	2.0730



Speed - Torque Curve

