

PRODUCT INFORMATION PACKET



Model No: LM34330

Catalog No: LM34330

LM34330..150/125HP..1800/1500RPM.444TS.ODP.460/380V.3PH.60/50HZ.CONT.40C.1.25/1.15SF.RIGID.....

.....

Regal and Leeson are trademarks of Regal Rexnord Corporation or one of its affiliated companies.

©2023 Regal Rexnord Corporation, All Rights Reserved. MC017097E





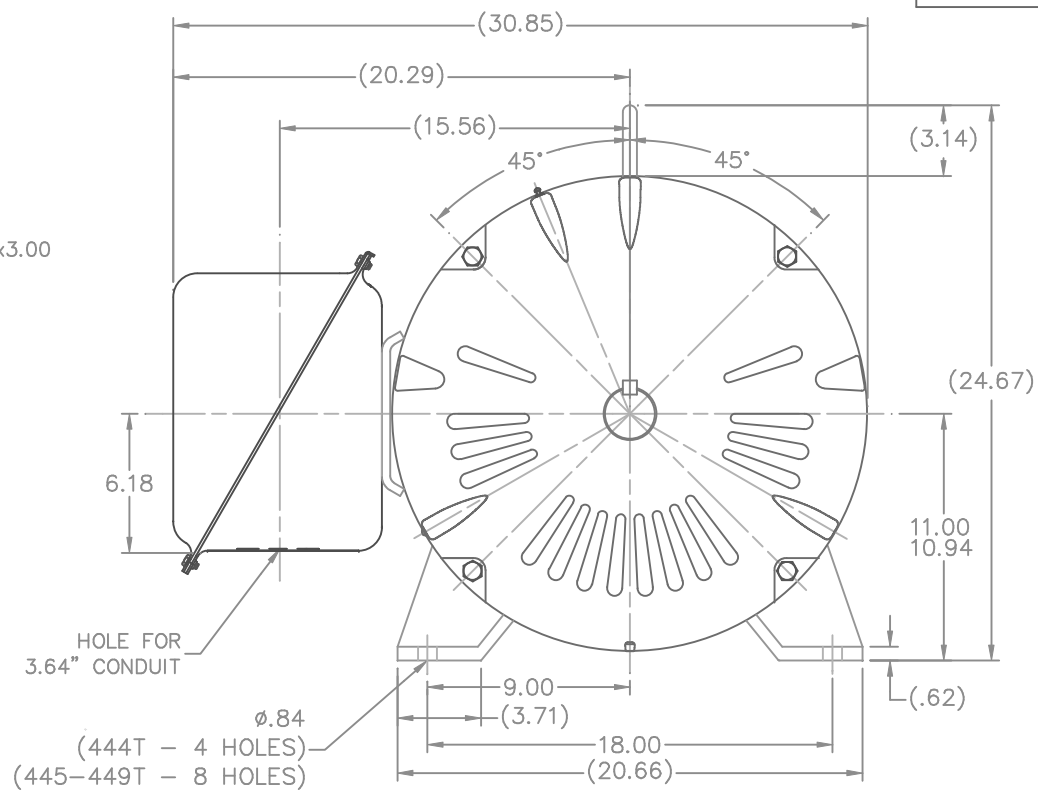
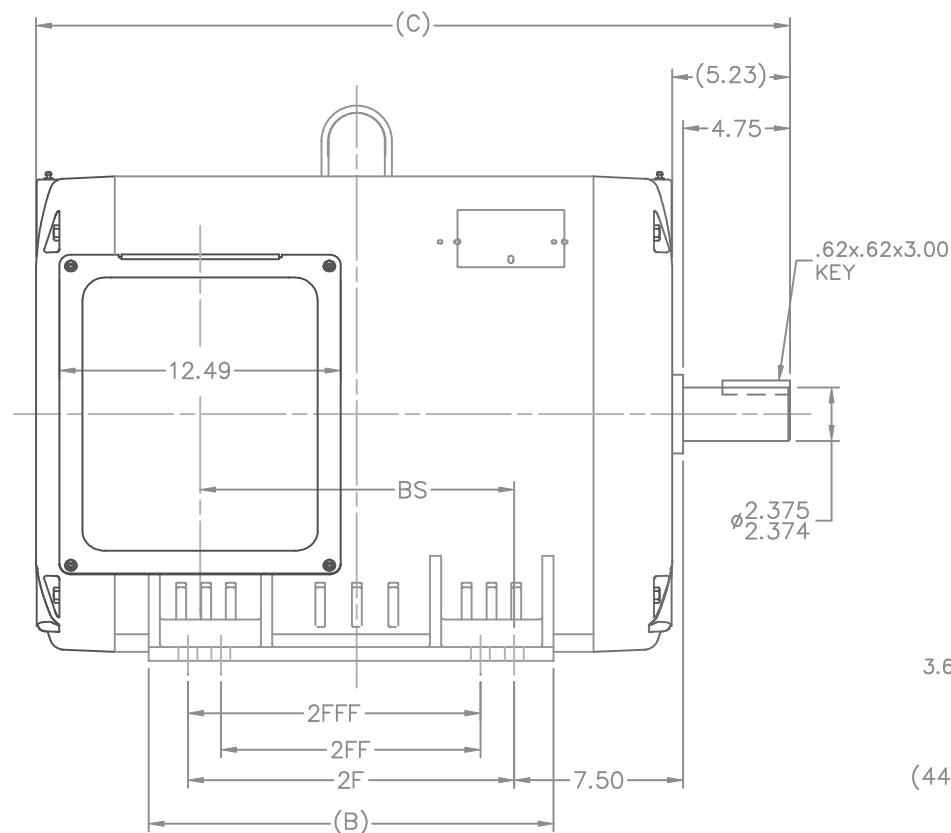
Nameplate Specifications

Phase	3	Output HP	150 & 125 Hp
Output KW	112.0 & 93.0 kW	Voltage	460 & 380 V
Speed	1788 & 1488 rpm	Service Factor	1.25 & 1.15
Frame	444TS	Enclosure	Drip Proof
Thermal Protection	No Protection	Efficiency	95.8 & 95.8 %
Ambient Temperature	40 °C	Frequency	60 & 50 Hz
Current	170 & 172 A	Power Factor	86
Duty	Continuous	Insulation Class	F
Design Code	B	KVA Code	G
Drive End Bearing Size	6318	Opp Drive End Bearing Size	6315
UL	Recognized	CSA	Y
CE	Y	IP Code	22
Number of Speeds	1		

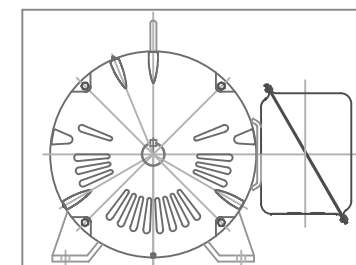
Technical Specifications

Electrical Type	Squirrel Cage Induction Run	Starting Method	Wye Start Delta Run
Poles	4	Rotation	Reversible
Resistance Main	.026 Ohms	Mounting	Rigid Base
Motor Orientation	Horizontal	Drive End Bearing	Ball
Opp Drive End Bearing	Ball	Frame Material	Rolled Steel
Shaft Type	TS	Assembly/Box Mounting	F2/F1 CAPABLE
Outline Drawing	XK2D1SS2-2127	Connection Drawing	A-EE7340-LN

This is an uncontrolled document once printed or downloaded and is subject to change without notice. Date Created:06/22/2023



- NOTES:
 1. CONDUIT BOX CAN BE ROTATED IN 90° STEPS.
 2. NAMEPLATES TO BE READ FROM CONDUIT BOX SIDE OF MOTOR.



F2 VIEW

DASH	FRAME	C	B	BS	2F	2FF	2FFF	NO.	REVISION	BY & DATE	CHK	ANG	±1/2"	FINISH	CAD FILE	SIZE	DRAWING NO.	REV.
2127	444TS	33.50	18.00	13.96	14.50			4	REVISED FROM 4 TO 4-8 HOLES PER CN 37556	CTO 12-17-2001	JB	.X	±.1					
2327	445TS	35.50	20.00	15.96	16.50	14.50	14.50	3	ADDED DASHES 2677 & 3177 CN 29200-2314	CTO 03-22-03	JNH	.XX	±.03					
2677	447TS	39.00	23.50	19.46	20.00	16.50	16.50	2	ADDED DASH 2327 CN 29200-2238	NJS 02-22-02	DRS	.XXX	±.005					
3177	449TS	44.00	28.50	24.46	25.00	20.00	20.00	1	NEW DRAWING - REPLACES 3XSD134FSSK-1 MU38160	TJB 08-30-01	ML	.XXX	±.0005					
THIS DRAWING IN DESIGN AND DETAIL IS OUR PROPERTY AND MUST NOT BE USED EXCEPT IN CONNECTION WITH OUR WORK ALL RIGHTS OF DESIGN AND INVENTION ARE RESERVED THIS IS AN ELECTRONICALLY GENERATED DOCUMENT - DO NOT SCALE THIS PRINT										RFP								
										DIST	BY							

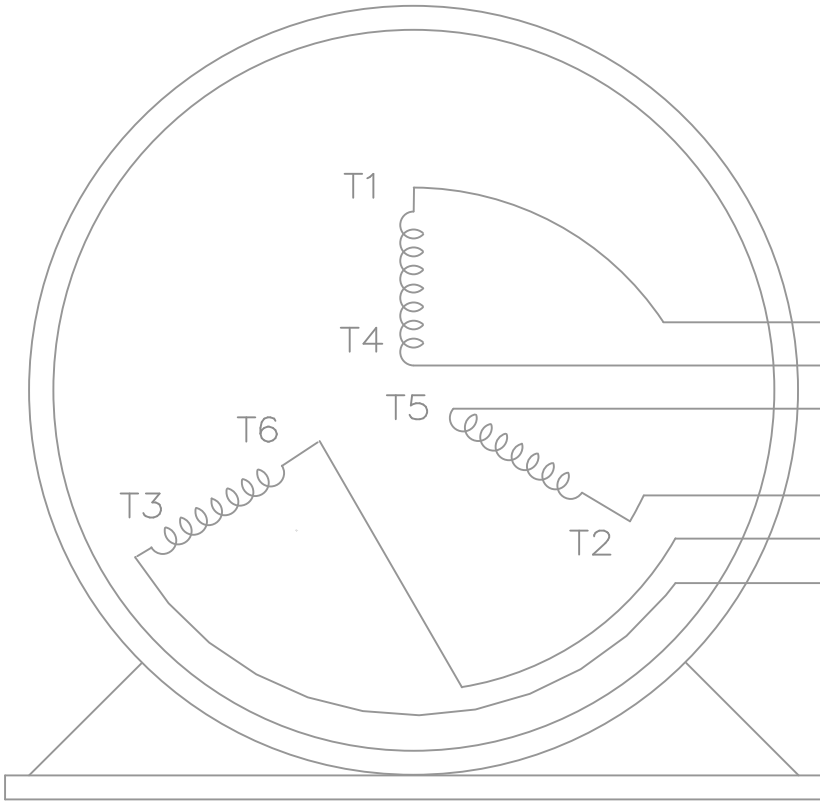


DRAWN TJB 08-08-2001
 CHK ML 08-23-2001
 APPD HNH 08-30-2001
 SCALE 1=5.5
 REF
 FMF
 PREV

TITLE OUTLINE NEMA MOTORS
 440TS OPD UE



THREE PHASE — Y START
 Δ RUN MOTOR




T1 (U1)
 T4 (U2)
 T5 (V2)
 T2 (V1)
 T6 (W2)
 T3 (W1)

T6CK
 T6BM
 T4CC
 T2DL
 T4C

NOTE:
 IEC LEAD MARKINGS ARE NOTED
 IN PARENTHESES

VIEW OF TERMINAL END

				TOLERANCES UNLESS SPECIFIED			DRAWN BLR 10-04-1999			
				DEC.	INCHES		CHK DRS 10-04-1999			
				.X	±.1		APPD TB 10-04-1999			
3	REVISED TO MATCH M.E. ORIGINAL	TAT 07-25-2005	ML	.XX	±.02	TITLE CONNECTION DIAGRAM 3ø – WYE START DELTA RUN	SCALE 1=1			
2	REVISED DRAWING MISTAKE CN 29200-2980	ERH 05-15-2003	ML	.XXX	±.005		REF			
1	NEW DRAWING	BLR 10-09-1999		.XXXX	±.0005		FMF			
NO.	REVISION	BY & DATE	CHK	ANG	±7'30"	FINISH	PREV			
THIS DRAWING IN DESIGN AND DETAIL IS OUR PROPERTY AND MUST NOT BE USED EXCEPT IN CONNECTION WITH OUR WORK ALL RIGHTS OF DESIGN AND INVENTION ARE RESERVED THIS IS AN ELECTRONICALLY GENERATED DOCUMENT – DO NOT SCALE THIS PRINT			RFP		CAD FILE ee7340_In		SIZE	DRAWING NO.	PAGE OF	REV.
			DIST WA-LB-SB				A	EE7340-LN		3