

# PRODUCT INFORMATION PACKET



Model No: LM34288

Catalog No: LM34288

LM34288..20HP..1760/1450RPM.256T.DP.230/460//190-208/380-415V.3PH.60/50HZ.CONT.40C.1.25SF/1.0SF.RIG  
ID.....

Regal and Leeson are trademarks of Regal Rexnord Corporation or one of its affiliated companies.

©2023 Regal Rexnord Corporation, All Rights Reserved. MC017097E





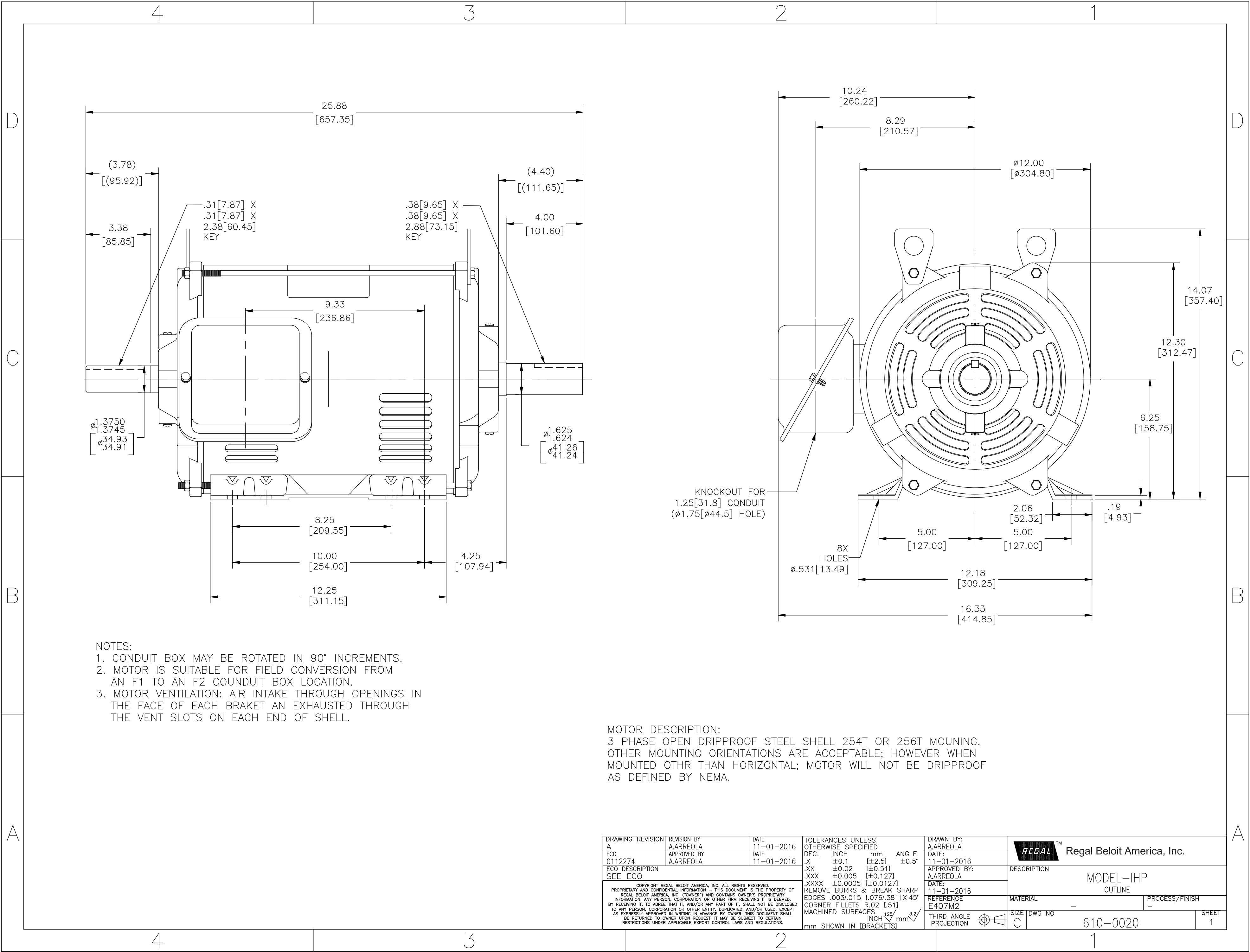
### Nameplate Specifications


Phase	3	Output HP	20 & 20 Hp
Output KW	14.9 & 14.9 kW	Voltage	230/460 & 190/380 V
Speed	1770 & rpm	Service Factor	1.25 & 1.0
Frame	256T	Enclosure	Drip Proof
Thermal Protection	No Protection	Efficiency	93.6 %
Ambient Temperature	40 °C	Frequency	60 & 50 Hz
Current	49/24.5 & 60/30 A	Power Factor	80.5
Duty	Continuous	Insulation Class	F
Design Code	B	KVA Code	G
Drive End Bearing Size	6309	Opp Drive End Bearing Size	6207
UL	Recognized	CSA	Y
CE	Y	IP Code	12
Number of Speeds	1		

### Technical Specifications

Electrical Type	Squirrel Cage Induction Run	Starting Method	Across The Line
Poles	4	Rotation	Reversible
Resistance Main	0 Ohms	Mounting	Rigid Base
Motor Orientation	Horizontal	Drive End Bearing	Ball
Opp Drive End Bearing	Ball	Frame Material	Rolled Steel
Shaft Type	NEMA STD DBL	Assembly/Box Mounting	F1/F2 CAPABLE
Outline Drawing	610-0020	Connection Drawing	80022802

This is an uncontrolled document once printed or downloaded and is subject to change without notice. Date Created:06/23/2023



DRAWING REVISION A	REVISION BY A.ARREOLA	DATE 11-01-2016	TOLERANCES UNLESS OTHERWISE SPECIFIED	DRAWN BY: A.ARREOLA	 <b>Regal Beloit America, Inc.</b>	
ECO 0112274	APPROVED BY A.ARREOLA	DATE 11-01-2016	DEC. INCH mm ANGLE .X ±0.1 [±2.5] ±0.5° .XX ±0.02 [±0.51] .XXX ±0.005 [±0.127] .XXXX ±0.0005 [±0.0127] REMOVE BURRS & BREAK SHARP EDGES .003/.015 [.076/.381] X 45° CORNER FILLETS R.02 [.51] MACHINED SURFACES $\frac{125}{\sqrt{32}}$ INCH/mm mm SHOWN IN [BRACKETS]	DATE: 11-01-2016		
ECO DESCRIPTION SEE ECO				APPROVED BY: A.ARREOLA	DESCRIPTION MODEL-IHP OUTLINE	
COPYRIGHT REGAL BELOIT AMERICA, INC. ALL RIGHTS RESERVED. PROPRIETARY AND CONFIDENTIAL INFORMATION - THIS DOCUMENT IS THE PROPERTY OF REGAL BELOIT AMERICA, INC. (OWNER) AND CONTAINS OWNER'S PROPRIETARY INFORMATION. ANY PERSON, CORPORATION OR OTHER FIRM RECEIVING IT IS DEEMED, BY RECEIVING IT, TO AGREE THAT IT, AND/OR ANY PART OF IT, SHALL NOT BE DISCLOSED TO ANY PERSON, CORPORATION OR OTHER ENTITY, DUPLICATED, AND/OR USED, EXCEPT AS EXPRESSLY APPROVED IN WRITING IN ADVANCE BY OWNER. THIS DOCUMENT SHALL BE RETURNED TO OWNER UPON REQUEST. IT MAY BE SUBJECT TO CERTAIN RESTRICTIONS UNDER APPLICABLE EXPORT CONTROL LAWS AND REGULATIONS.				DATE: 11-01-2016	MATERIAL -	PROCESS/FINISH -
				REFERENCE E407M2	SIZE DWG NO C 610-0020	SHEET 1
				THIRD ANGLE PROJECTION 