

PRODUCT INFORMATION PACKET



Model No: LM34003
Catalog No: LM34003
..15HP..3600RPM.254TC.TEFC.460V.3PH.60HZ.Cont.40C.1.15SF.....

Regal and Leeson are trademarks of Regal Rexnord Corporation or one of its affiliated companies.
©2024 Regal Rexnord Corporation, All Rights Reserved. MC017097E





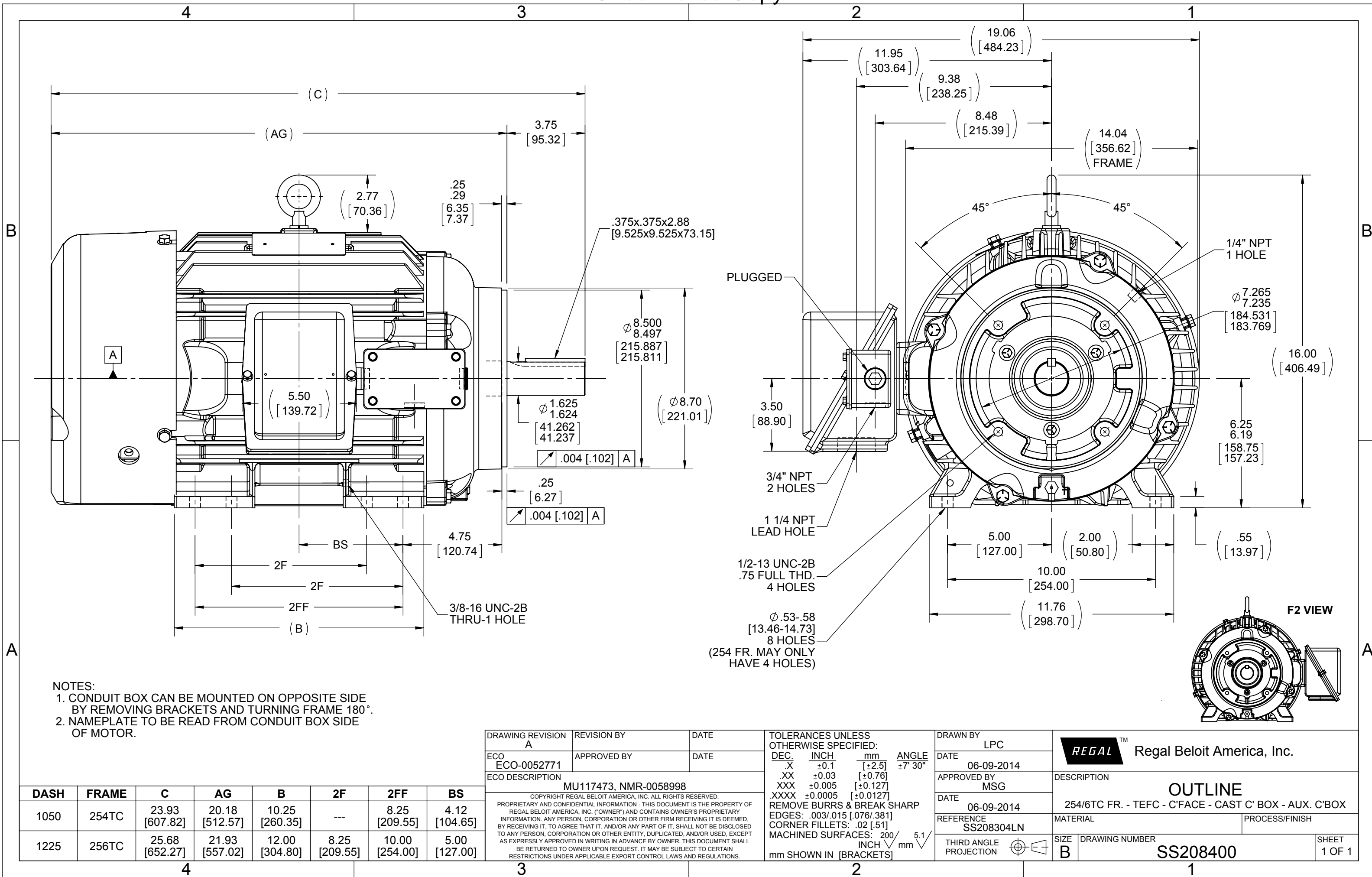
Nameplate Specifications

Phase	3	Output HP	15 Hp
Output KW	11.2 kW	Voltage	460 V
Speed	3550 rpm	Service Factor	1.15
Frame	254TC	Enclosure	Totally Enclosed Fan Cooled
Thermal Protection	No Protection	Efficiency	91.7 %
Ambient Temperature	40 °C	Frequency	60 Hz
Current	17.5 A	Power Factor	85
Duty	Continuous	Insulation Class	F
Design Code	B	KVA Code	G
Drive End Bearing Size	6309	Opp Drive End Bearing Size	6210
UL	Recognized	CSA	Y
CE	Y	IP Code	56
Number of Speeds	1		

Technical Specifications

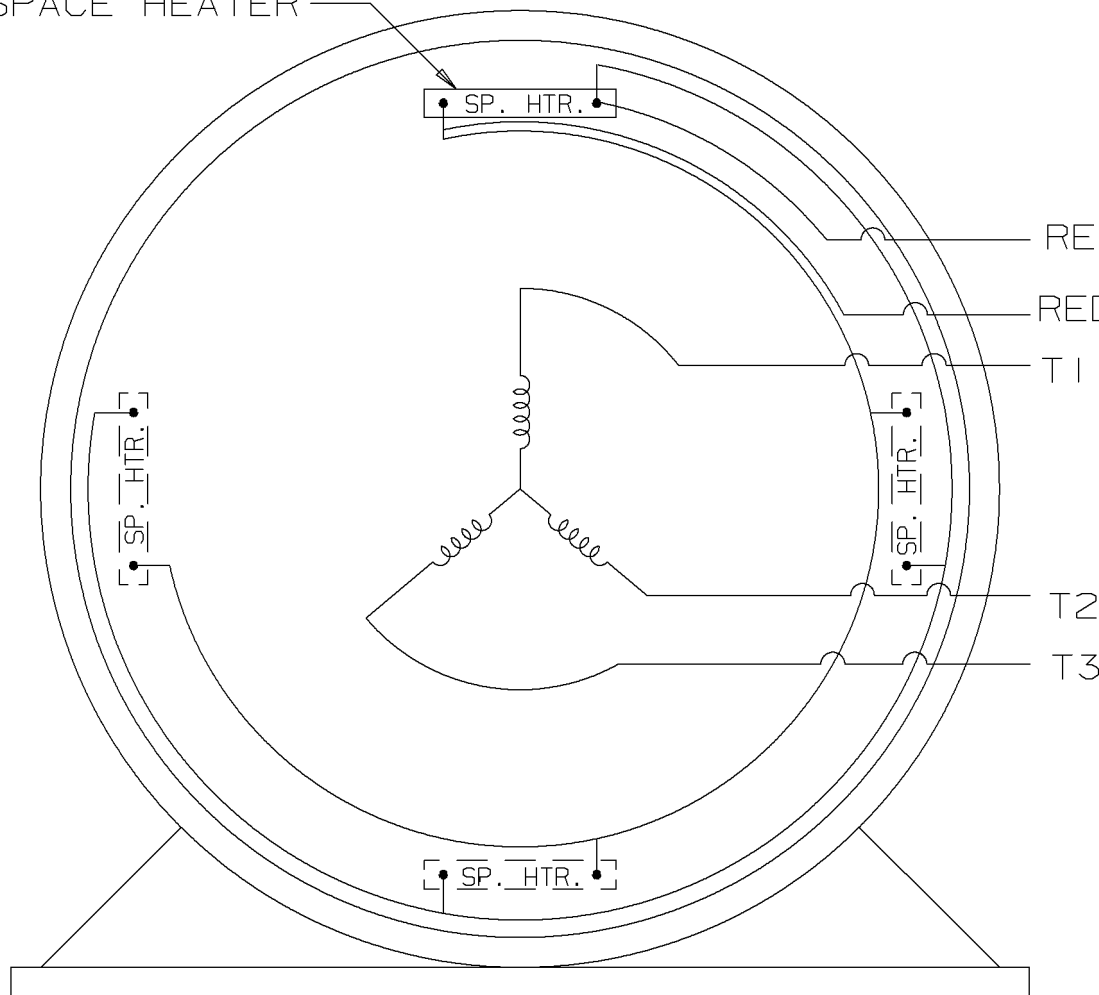
Electrical Type	Squirrel Cage Inverter Rated	Starting Method	Line Or Inverter
Poles	2	Rotation	Reversible
Resistance Main	.603 Ohms	Mounting	Rigid Base
Motor Orientation	Horizontal	Drive End Bearing	Ball
Opp Drive End Bearing	Ball	Frame Material	Cast Iron
Shaft Type	T	Assembly/Box Mounting	F1/F2 CAPABLE
Inverter Load	VARIABLE 10:1		
Outline Drawing	SS208400-1050	Connection Drawing	EE7300X-LN

This is an uncontrolled document once printed or downloaded and is subject to change without notice. Date Created:09/12/2024



SPACE HEATER

A- EE7300X-LN

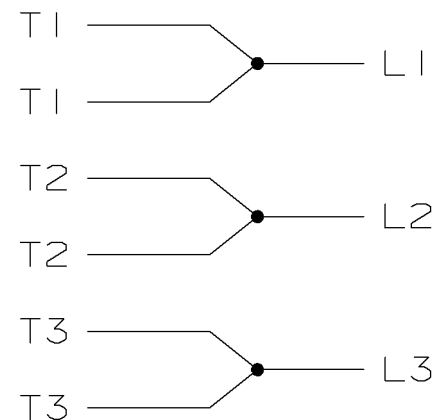


VIEW OF TERMINAL END

NOTES:

1. WHEN MORE THAN ONE HEATER IS USED, HEATERS MUST BE CONNECTED IN PARALLEL.
2. RED LEADS CONNECTED TO SPACE HEATER CIRCUIT.
3. THREE PHASE MOTOR CONDUIT BOX AT "A" SINGLE VOLTAGE.

IF MOTOR HAS 6 LEADS



A-9806 DECAL

				✓ UNLESS OTHERWISE SPECIFIED DIMENSIONS ARE IN INCHES TOL. ON XX±.02 XXX±.005 XXXX±.0005 ANGLES± 7°30"			
				MAX. SURFACE ROUGHNESS UNLESS OTHERWISE NOTED		DRAWN BY DRS	02-10-2000
				FINISH		CHKD BY ML	02-10-2000
				MATERIAL		APPD BY RJM	02-10-2000
REV	DATE	CHANGE	NAME	PART NAME CONNECTION DIAGRAM 3Ø - SINGLE VOLTAGE			DRWG NO A- EE7300X-LN
				PURCHASED	CADD FILE NO.	EE7300X-LN	