

# PRODUCT INFORMATION PACKET



Model No: LM33965  
Catalog No: LM33965  
..75/75HP..1800/900RPM.445T.DP.460V.3PH.60HZ.CONT.40C.1.15SF.....

Regal and Leeson are trademarks of Regal Rexnord Corporation or one of its affiliated companies.  
©2023 Regal Rexnord Corporation, All Rights Reserved. MC017097E





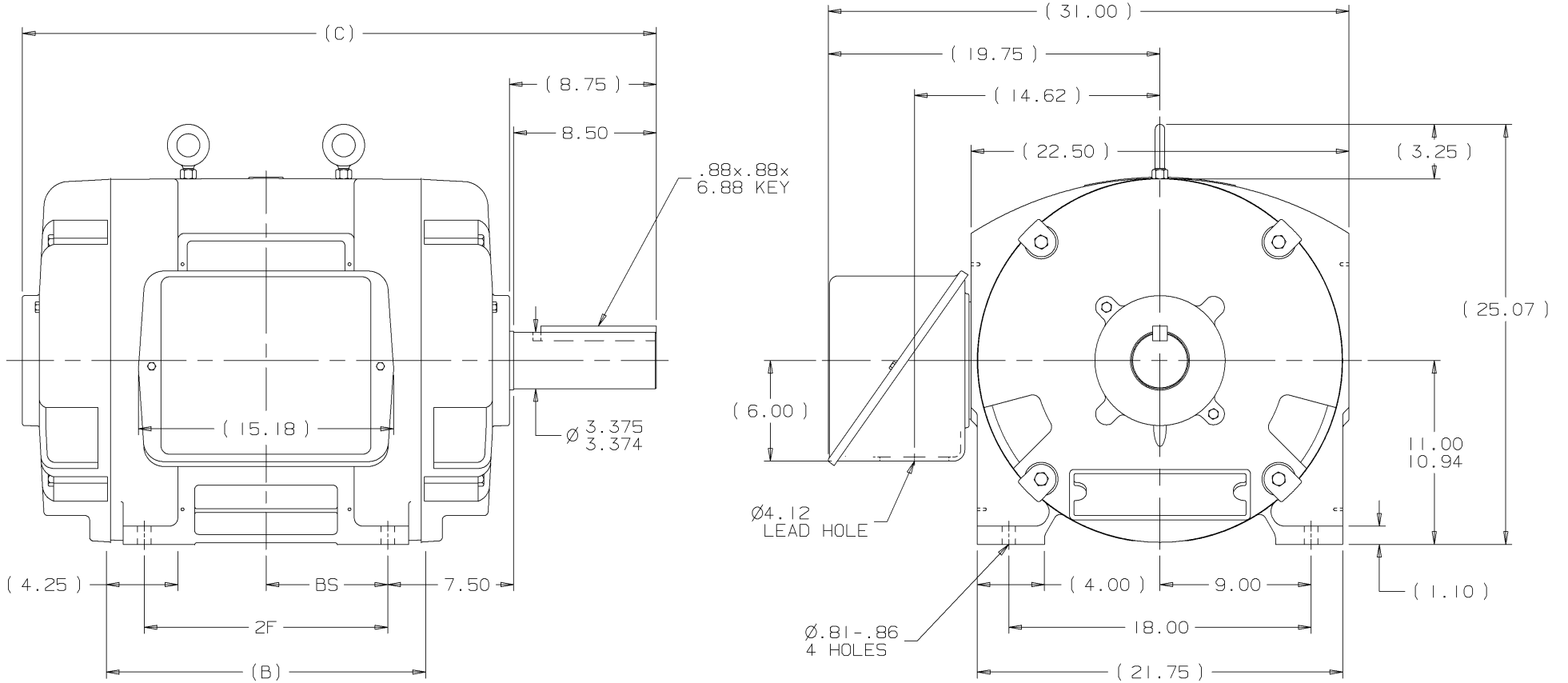
### Nameplate Specifications

Phase	<b>3</b>	Output HP	<b>75 &amp; 75 Hp</b>
Output KW	<b>56.0 &amp; 56.0 kW</b>	Voltage	<b>460 &amp; 460 V</b>
Speed	<b>1782 &amp; 890 rpm</b>	Service Factor	<b>1.15 &amp; 1.15</b>
Frame	<b>445T</b>	Enclosure	<b>Drip Proof</b>
Thermal Protection	<b>No Protection</b>	Efficiency	<b>93 &amp; 92.4 %</b>
Ambient Temperature	<b>40 °C</b>	Frequency	<b>60 &amp; 60 Hz</b>
Current	<b>82 &amp; 104 A</b>	Power Factor	<b>91</b>
Duty	<b>Continuous</b>	Insulation Class	<b>F</b>
Design Code	<b>1CH</b>	KVA Code	<b>J</b>
Drive End Bearing Size	<b>NU318</b>	Opp Drive End Bearing Size	<b>6316</b>
UL	<b>Recognized</b>	CSA	<b>Y</b>
CE	<b>Y</b>	IP Code	<b>12</b>
Number of Speeds	<b>2</b>		


### Technical Specifications

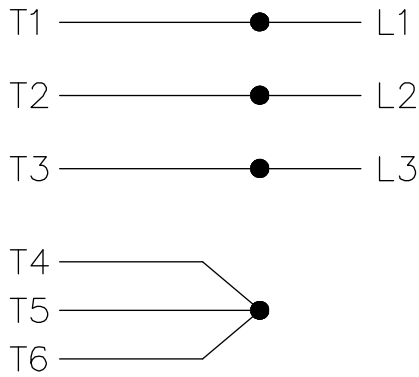
Electrical Type	<b>Squirrel Cage Induction Run</b>	Starting Method	<b>Across The Line</b>
Poles	<b>4/8</b>	Rotation	<b>Reversible</b>
Resistance Main	<b>.145 Ohms</b>	Mounting	<b>Rigid Base</b>
Motor Orientation	<b>Horizontal</b>	Drive End Bearing	<b>Roller</b>
Opp Drive End Bearing	<b>Ball</b>	Frame Material	<b>Cast Iron</b>
Shaft Type	<b>T</b>	Assembly/Box Mounting	<b>F1/F2 CAPABLE</b>
Outline Drawing	<b>B-SS509449LN-2050</b>	Connection Drawing	<b>A-EE7323A-LN</b>

This is an uncontrolled document once printed or downloaded and is subject to change without notice. Date Created:06/23/2023

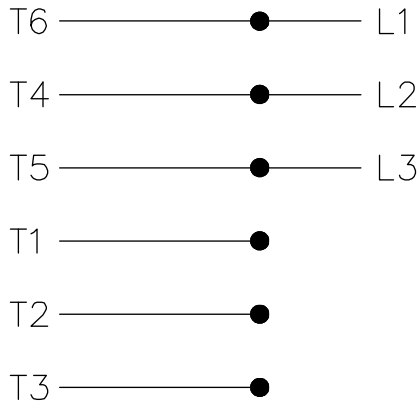


- NOTES:
1. CONDUIT BOX CAN BE ROTATED IN 90° STEPS.
  2. CONDUIT BOX CAN BE MOUNTED ON OPPOSITE SIDE BY REMOVING BRACKETS AND TURNING FRAME 180°.
  3. NAMEPLATES TO BE READ FROM CONDUIT BOX SIDE OF MOTOR

DASH	FRAME	B	C	2F	BS	TOLERANCES UNLESS SPECIFIED			DRAWN
						DEC.	TOLERANCE		KML 11-30-2001
						.X	±.1		CHK
						.XX	±.03	TITLE OUTLINE	DJK 12-04-2001
						.XXX	±.005	440T FR. - DR.PR.	APPD
						.XXXX	±.0005	MAT'L.	JES 12-04-2001
						NO.	REVISION	FINISH	SCALE
						BY & DATE	CHK	ANG	REF
						THIS DRAWING IN DESIGN AND DETAIL IS OUR PROPERTY AND MUST NOT BE USED EXCEPT IN CONNECTION WITH OUR WORK. ALL RIGHTS OF DESIGN AND INVENTION ARE RESERVED. THIS IS AN ELECTRONICALLY GENERATED DOCUMENT - DO NOT SCALE THIS PRINT		PURCHASED	FMF
								CAD FILE SS509449LN.GEN	PREV
								DIST WA - 06 - <del>VA</del> - LA - BR - LXI	SIZE
									DRAWING NO.
									B SS509449LN
									REV.

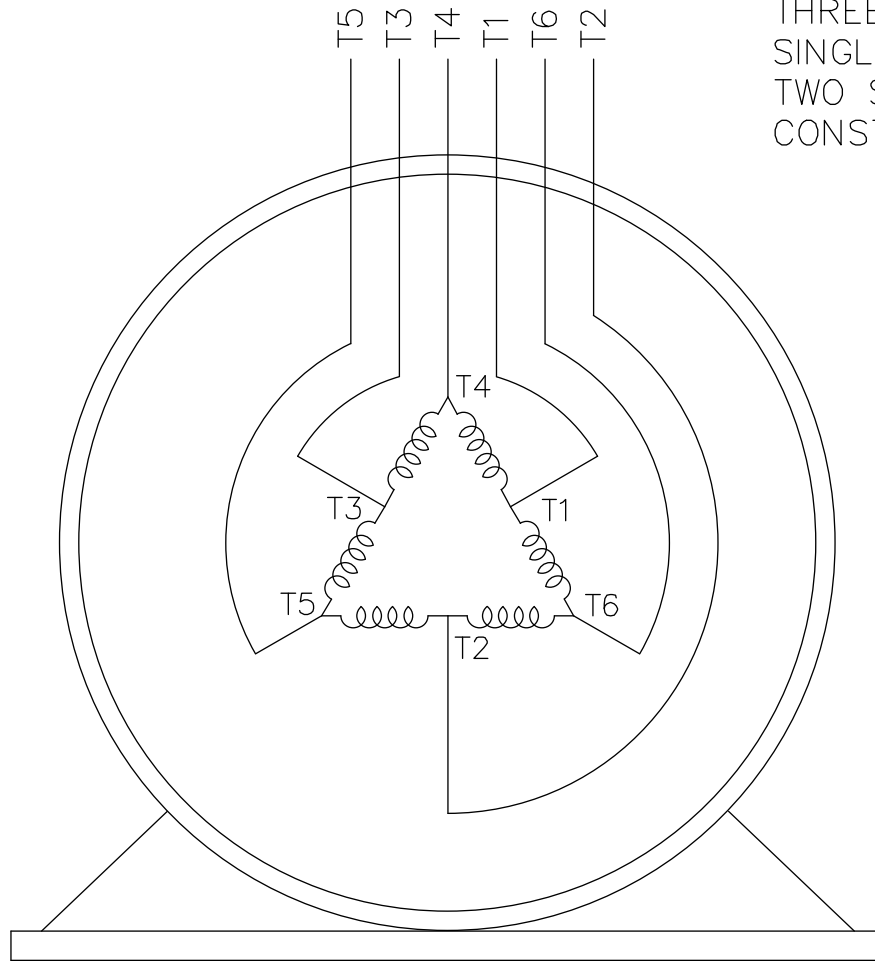


LOW SPEED



HIGH SPEED

THREE PHASE MOTOR  
 SINGLE VOLTAGE  
 TWO SPEED SINGLE WINDING  
 CONSTANT HORSE POWER



VIEW OF TERMINAL END

				TOLERANCES UNLESS SPECIFIED			DRAWN MSG 02-22-2013		
				DEC.	INCHES		CHK MH 02-22-2013		
				.X	± -		APPD DJK 02-22-2013		
				.XX	± -		SCALE 1=1		
				.XXX	± -		REF		
				.XXXX	± -		FMF MU11937		
NO.	REVISION	BY & DATE	CHK	ANG	± -	FINISH	PREV		
THIS DRAWING IN DESIGN AND DETAIL IS OUR PROPERTY AND MUST NOT BE USED EXCEPT IN CONNECTION WITH OUR WORK ALL RIGHTS OF DESIGN AND INVENTION ARE RESERVED THIS IS AN ELECTRONICALLY GENERATED DOCUMENT - DO NOT SCALE THIS PRINT			RFP	02-22-2013	CAD FILE EE7323A-LN		SIZE	DRAWING NO. PAGE OF	REV.
			DIST			A	EE7323A-LN		