

# PRODUCT INFORMATION PACKET



Model No: LM33779

Catalog No: LM33779

LM33779..200/200HP..1800/1500RPM.445TSC.DP.460//380VAC.3PH.60/50HZ.CONT.40C.1.15SF.C-FACE.....

....

Regal and Leeson are trademarks of Regal Rexnord Corporation or one of its affiliated companies.

©2023 Regal Rexnord Corporation, All Rights Reserved. MC017097E





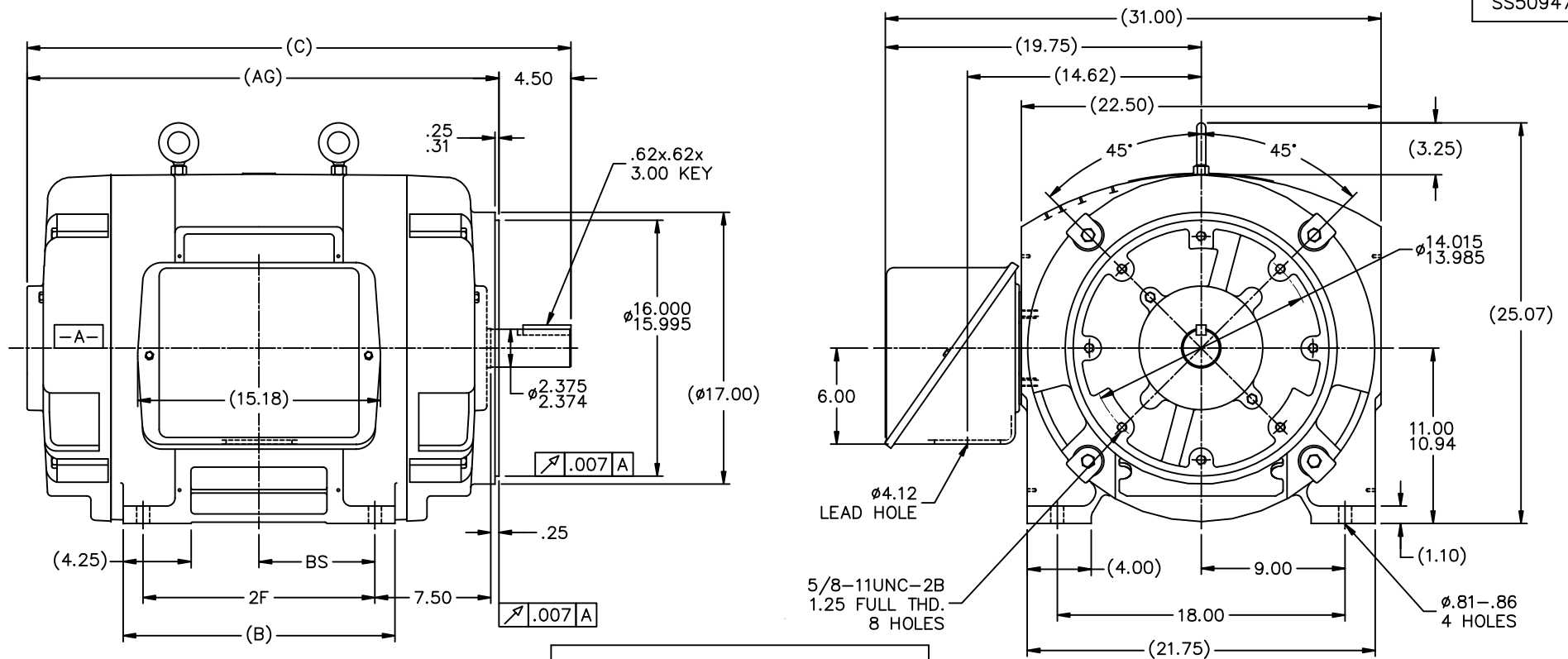
### Nameplate Specifications

Phase	3	Output HP	200 & 200 Hp
Output KW	149.0 & 149.0 kW	Voltage	460 & 380 V
Speed	1785 & 1475 rpm	Service Factor	1.15 & 1.15
Frame	445TSC	Enclosure	Drip Proof
Thermal Protection	No Protection	Efficiency	95.8 & 95 %
Ambient Temperature	40 °C	Frequency	60 & 50 Hz
Current	225 & 275 A	Power Factor	86.5
Duty	Continuous	Insulation Class	F
Design Code	B	KVA Code	G
Drive End Bearing Size	6313	Opp Drive End Bearing Size	6313
UL	Recognized	CSA	Y
CE	Y	IP Code	12
Number of Speeds	1		

### Technical Specifications

Electrical Type	Squirrel Cage Induction Run	Starting Method	Part Wdg Start & Wye Start Delta Run
Poles	4	Rotation	Reversible
Resistance Main	.021 Ohms	Mounting	Rigid Base
Motor Orientation	Horizontal	Drive End Bearing	Ball
Opp Drive End Bearing	Ball	Frame Material	Cast Iron
Shaft Type	TS	Assembly/Box Mounting	F2/F1 CAPABLE
Outline Drawing	SS509474LN-2050	Connection Drawing	EE7300BH-LN

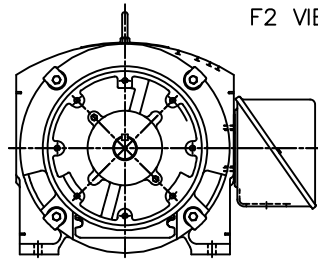
This is an uncontrolled document once printed or downloaded and is subject to change without notice. Date Created:06/23/2023




## NOTES:

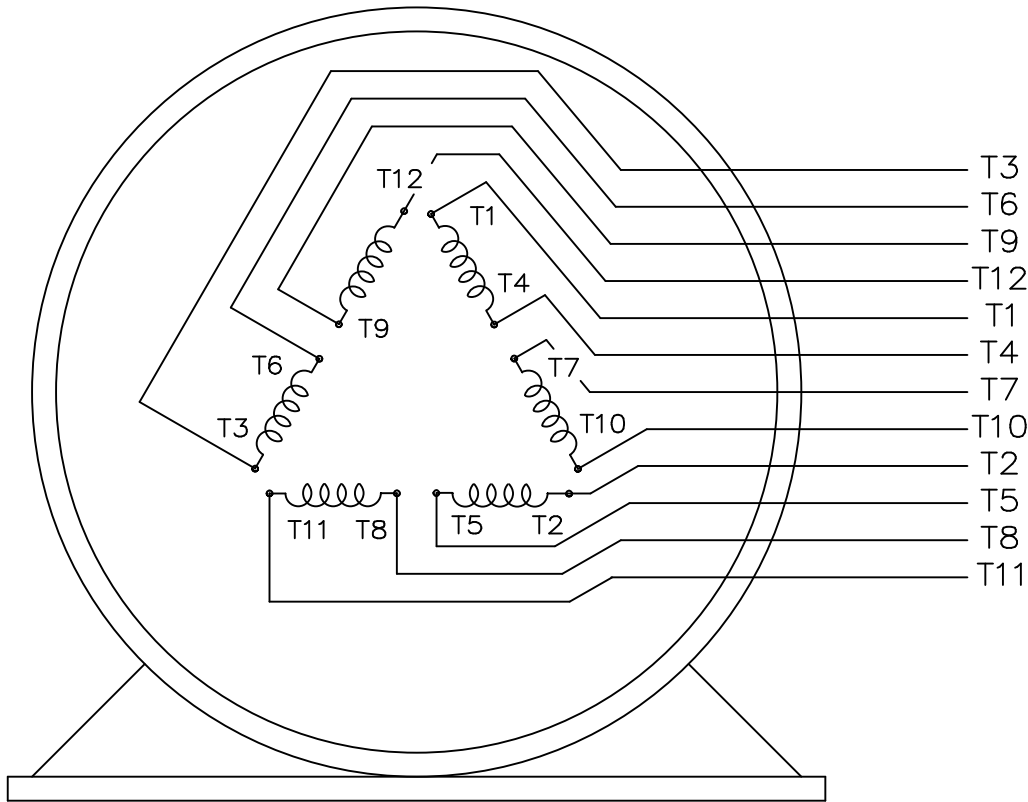
1. CONDUIT BOX CAN BE ROTATED IN 90° STEPS.
2. CONDUIT BOX CAN BE MOUNTED ON OPPOSITE SIDE BY REMOVING BRACKETS AND TURNING FRAME 180°.
3. NAMEPLATES TO BE READ FROM CONDUIT BOX SIDE OF MOTOR

F2 VIEW

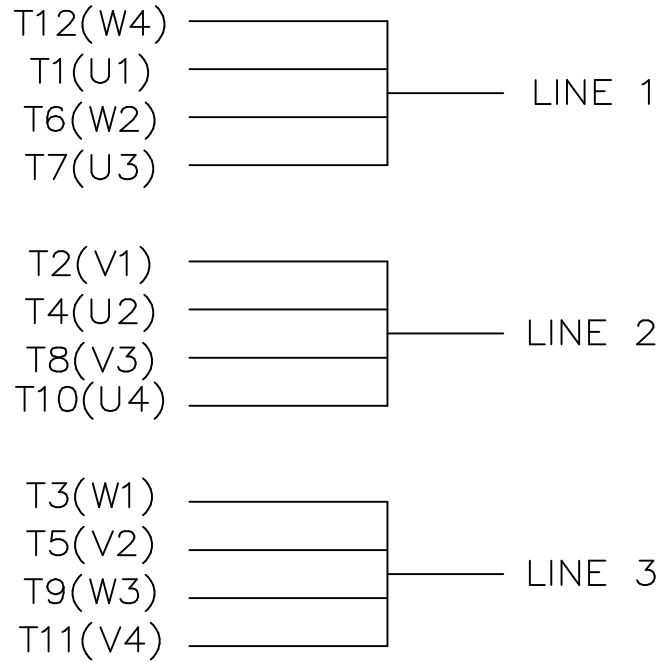



SIDE OF MOTOR											TOLERANCES UNLESS SPECIFIED				DRAWN KL 05-19-2004									
											DEC.	INCHES			CHK	ML	06-11-2004							
											.X	±.1	APPD	JES	06-11-2004									
											.XX	±.03	TITLE OUTLINE 440TSC FR. - DR.PR. - C'FACE			SCALE	5=32							
											.XXX	±.005				REF								
DASH	FRAME	B	C	AG	2F	BS	1	ADDED F2 VIEW	CP 09-08-2011	CMN	.XXXX	±.0005	MAT'L	FMF	MU60439									
1850	444TSC	17.00	34.00	29.50	14.50	7.25	NO.	REVISION		BY & DATE		CHK	ANG	±7°30"	FINISH	PREV								
2050	445TSC	19.00	36.00	31.50	16.50	8.25	THIS DRAWING IN DESIGN AND DETAIL IS OUR PROPERTY AND MUST NOT BE USED EXCEPT IN CONNECTION WITH OUR WORK. ALL RIGHTS OF DESIGN AND INVENTION ARE RESERVED. THIS IS AN ELECTRONICALLY GENERATED DOCUMENT - DO NOT SCALE THIS PRINT										RFP	08-11-2004	CAD FILE SS509474LN	SIZE	DRAWING NO.	PAGE	OF	REV.
										DIST	WA				B	SS509474LN								

THIS DRAWING IN DESIGN AND DETAIL IS OUR PROPERTY AND MUST NOT BE USED EXCEPT IN CONNECTION WITH OUR WORK. ALL RIGHTS OF DESIGN AND INVENTION ARE RESERVED. THIS IS AN ELECTRONICALLY GENERATED DOCUMENT - DO NOT SCALE THIS PRINT



VIEW OF TERMINAL END



				TOLERANCES UNLESS SPECIFIED			DRAWN KL 04-23-2002			
				DEC.	INCHES		CHK DJK 04-24-2002			
				.X	±.1		APPD EAB 04-24-2002			
				.XX	±.01		SCALE 1=1			
2	ADDED IEC TERMINAL MARKINGS CN 41429	JJB 05/24/2004	ML	.XXX	±.005	TITLE CONNECTION DIAGRAM – EXTERNAL 12 LEAD – SINGLE VOLTAGE MAT'L. FINISH	REF			
1	NEW DRAWING MU41562	KL 04-12-02		.XXXX	±.0005		FMF			
NO.	REVISION	BY & DATE	CHK	ANG	±1/2"		PREV			
THIS DRAWING IN DESIGN AND DETAIL IS OUR PROPERTY AND MUST NOT BE USED EXCEPT IN CONNECTION WITH OUR WORK ALL RIGHTS OF DESIGN AND INVENTION ARE RESERVED THIS IS AN ELECTRONICALLY GENERATED DOCUMENT – DO NOT SCALE THIS PRINT				RFP	CAD FILE ee7300bh_ln	SIZE A	DRAWING NO. EE7300BH-LN	PAGE OF	REV. 2	
				DIST WA-SB						