

PRODUCT INFORMATION PACKET



Model No: LM33769

Catalog No: LM33769

..10HP..1200RPM.256TV.TENV.230/460//190-380V.3PH.60/50HZ.CONT.-40C.1.25SF.....

Regal and Leeson are trademarks of Regal Rexnord Corporation or one of its affiliated companies.

©2023 Regal Rexnord Corporation, All Rights Reserved. MC017097E





Nameplate Specifications

Phase	3	Output HP	10 & 10 Hp
Output KW	7.5 & 7.5 kW	Voltage	230/460 & 190/380 V
Speed	1176 & 965 rpm	Service Factor	1.25 & 1.25
Frame	256TV	Enclosure	Totally Enclosed Air Over
Thermal Protection	No Protection	Efficiency	91 & 87.5 %
Ambient Temperature	-40 °C	Frequency	60 & 50 Hz
Current	26.2/13.1 & 31/15.5 A	Power Factor	79
Duty	Continuous	Insulation Class	F
Design Code	B	KVA Code	H
Drive End Bearing Size	6309	Opp Drive End Bearing Size	6208
UL	Recognized	CSA	Y
CE	N	IP Code	43
Number of Speeds	1		

Technical Specifications

Electrical Type	Squirrel Cage Induction Run	Starting Method	Across The Line
Poles	6	Rotation	Reversible
Resistance Main	.934 Ohms	Mounting	Rigid Base
Motor Orientation	Shaft Down	Drive End Bearing	Ball
Opp Drive End Bearing	Ball	Frame Material	Aluminum
Shaft Type	T	Assembly/Box Mounting	W6
Outline Drawing	B-SS310522-1375	Connection Drawing	A-EE7308-LN

This is an uncontrolled document once printed or downloaded and is subject to change without notice. Date Created:06/23/2023

4

3

Uncontrolled Copy

2

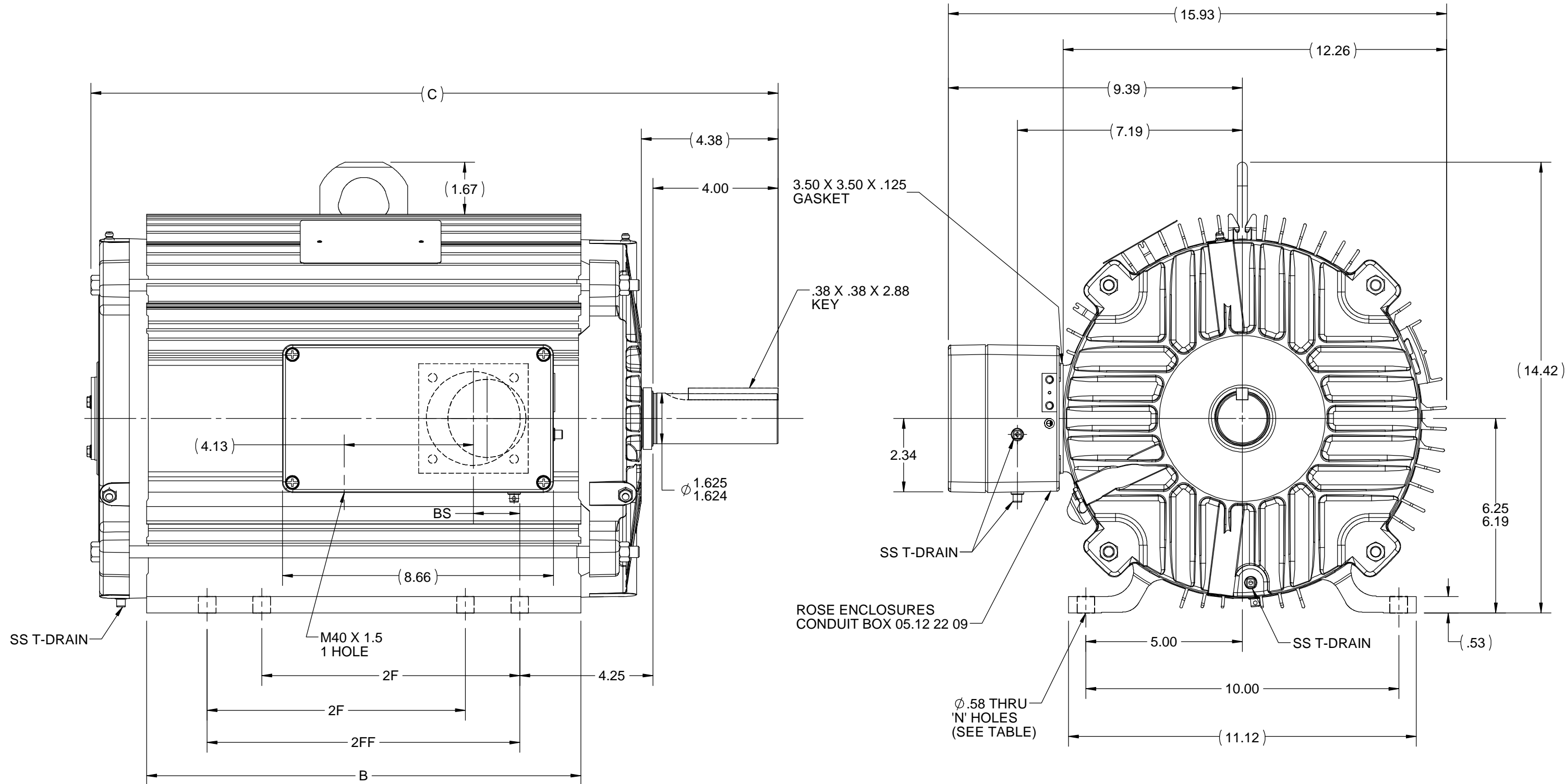
1

B

B

A

A


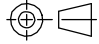


- NOTES
- CONDUIT BOX CAN BE MOUNTED ON OPPOSITE SIDE BY REMOVING BRACKETS AND TURNING FRAME 180°
 - NAMEPLATE TO BE READ FROM CONDUIT BOX SIDE OF MOTOR

1200	254T	20.23	12.13	8.25	---	1.49	4
1375	254/256T	21.98	13.88	8.25	10.00	1.49	8
DASH	FRAME	C	B	2F	2FF	BS	N

DRAWING REVISION B	REVISION BY W. JOERGER	DATE 04-10-2018
ECO ECO-0142053	APPROVED BY L. REAMER	DATE 04-10-2018
ECO DESCRIPTION REPLACED SS BREATHERS & CORES W/SS T-DRAINS		
COPYRIGHT REGAL BELOIT AMERICA, INC. ALL RIGHTS RESERVED. PROPRIETARY AND CONFIDENTIAL INFORMATION - THIS DOCUMENT IS THE PROPERTY OF REGAL BELOIT AMERICA, INC. ("OWNER") AND CONTAINS OWNER'S PROPRIETARY INFORMATION. ANY PERSON, CORPORATION OR OTHER FIRM RECEIVING IT IS DEEMED, BY RECEIVING IT, TO AGREE THAT IT, AND/OR ANY PART OF IT, SHALL NOT BE DISCLOSED TO ANY PERSON, CORPORATION OR OTHER ENTITY, DUPLICATED, AND/OR USED, EXCEPT AS EXPRESSLY APPROVED IN WRITING IN ADVANCE BY OWNER. THIS DOCUMENT SHALL BE RETURNED TO OWNER UPON REQUEST. IT MAY BE SUBJECT TO CERTAIN RESTRICTIONS UNDER APPLICABLE EXPORT CONTROL LAWS AND REGULATIONS.		

TOLERANCES UNLESS OTHERWISE SPECIFIED:			
DEC.	INCH	mm	ANGLE
.X	±0.1	[±2.5]	±7° 30"
.XX	±0.03	[±0.76]	
.XXX	±0.005	[±0.127]	
.XXXX	±0.0005	[±0.0127]	
REMOVE BURRS & BREAK SHARP EDGES: .003/.015 [.076/.381] X 45°			
CORNER FILLETS: R.02 [.51]			
MACHINED SURFACES: 200 INCH/mm 5.1			
mm SHOWN IN [BRACKETS]			

DRAWN BY W. JOERGER	 Regal Beloit America, Inc.		
DATE 03-28-2017			
APPROVED BY E. HEIL	DESCRIPTION OUTLINE		
DATE 03-28-2017	TENV - 250T FR - HORIZONTAL - SPL CONDUIT BOX		
REFERENCE SS330267LN	MATERIAL		PROCESS/FINISH
THIRD ANGLE PROJECTION 	SIZE B	DRAWING NUMBER SS310522	SHEET 1 OF 1

THREE PHASE
DUAL VOLTAGE MOTOR

HIGH VOLTAGE



LOW VOLTAGE



VIEW OF TERMINAL END

REF.
WINDING DIAGRAM

T8Y, T2Y, T2BL, T4BX, T2EC, T2G
T6BZ, T2B, T6BL, T4AV, T6B, T4B

OPTIONAL CORD
CONNECTION

L1 — WHITE
L2 — RED
L3 — BLACK

				TOLERANCES UNLESS SPECIFIED			DRAWN BLR 06/11/1999			
				DEC.	INCHES		CHK ML 06/18/1999			
				.X	±.1		APPD GK 06/18/1999			
3	ADDED THE OPTIONAL CORD CONNECTION MU46318	RDH 04/24/2003	DRS	.XX	±.02	TITLE CONNECTION DIAGRAM 3ø – DUAL VOLTAGE MOTOR	SCALE 1=1			
2	RE-ISSUE, ADDED '-' TO PART NUMBER	BLR 08/09/1999	GK	.XXX	±.005		REF			
1	NEW DRAWING	BLR 06/18/1999	GK	.XXXX	±.0005	MAT'L.	FMF			
NO.	REVISION	BY & DATE	CHK	ANG	±7'30"	FINISH	PREV			
THIS DRAWING IN DESIGN AND DETAIL IS OUR PROPERTY AND MUST NOT BE USED EXCEPT IN CONNECTION WITH OUR WORK ALL RIGHTS OF DESIGN AND INVENTION ARE RESERVED THIS IS AN ELECTRONICALLY GENERATED DOCUMENT – DO NOT SCALE THIS PRINT			RFP		CAD FILE EE7308LN		SIZE	DRAWING NO.	PAGE OF	REV.
			DIST WP				A	EE7308-LN		3