

# PRODUCT INFORMATION PACKET

Model No: LM33752

Catalog No: LM33752

LM33752..30HP..3600RPM.286TSCZ.DP.460VAC.3PH.60HZ.CONT.50C.1.35SF.....

Regal and are trademarks of Regal Rexnord Corporation or one of its affiliated companies.  
©2022 Regal Rexnord Corporation, All Rights Reserved. MC017097E





### Nameplate Specifications

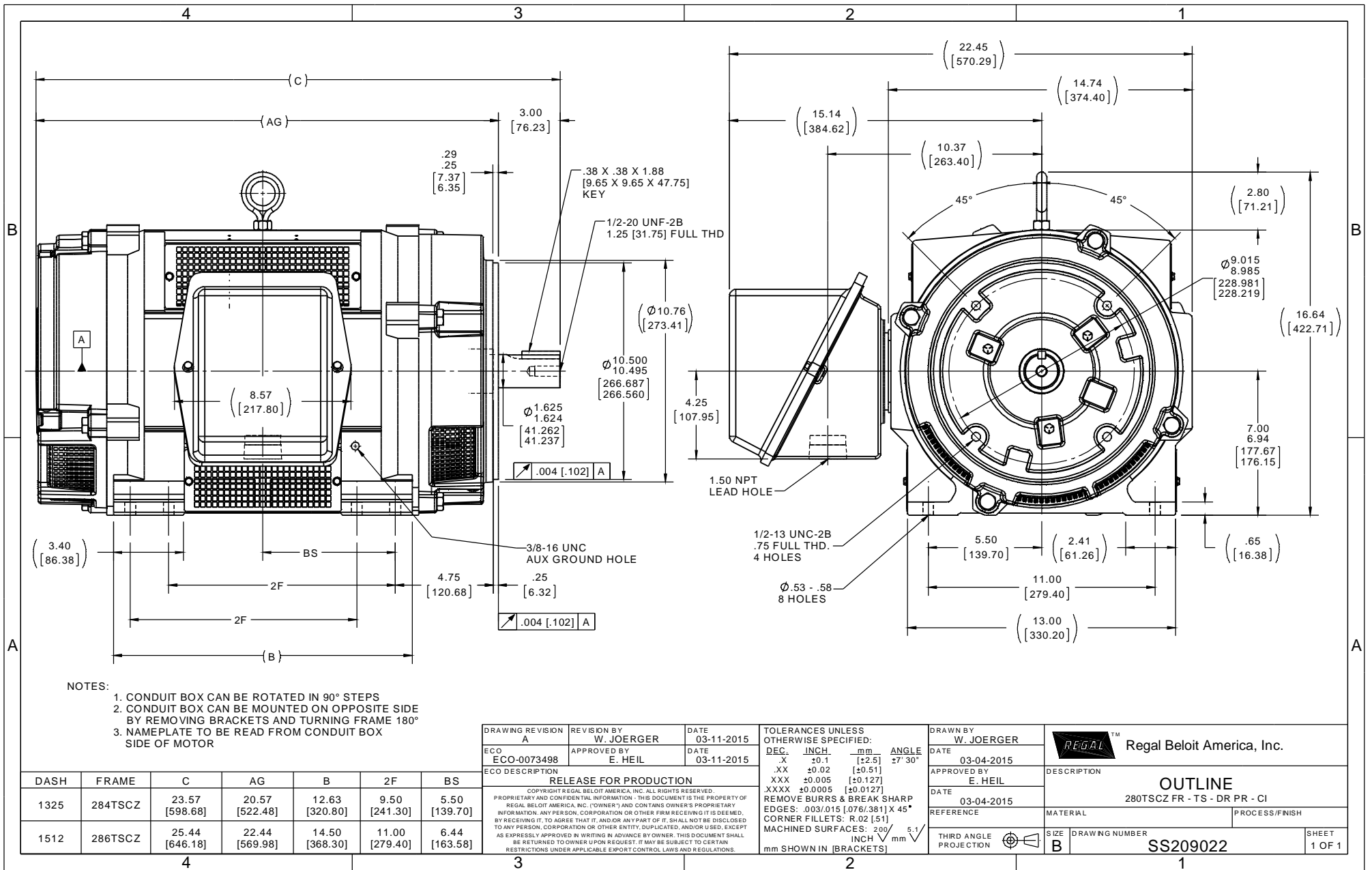
Output HP	30 Hp	Output KW	22.4 kW
Frequency	60 Hz	Voltage	230/460 V
Current	67.5/34.0 A	Speed	3555 rpm
Service Factor	1.35	Phase	3
Efficiency	93.6 %	Power Factor	89
Duty	Continuous	Insulation Class	F
Design Code	B	KVA Code	G
Frame	286TSC	Enclosure	Drip Proof
Thermal Protection	No Protection	Ambient Temperature	50 °C
Drive End Bearing Size	6312	Opp Drive End Bearing Size	6210
UL	Recognized	CSA	Y
CE	Y	IP Code	23
Number of Speeds	1		

### Technical Specifications

Electrical Type	Squirrel Cage Induction Run	Starting Method	Part Wdg Start Low Volt Only & Wye Start Delta Run
Poles	2	Rotation	Reversible
Resistance Main	.298 Ohms	Mounting	Rigid Base
Motor Orientation	Horizontal	Drive End Bearing	Ball
Opp Drive End Bearing	Ball	Frame Material	Cast Iron
Shaft Type	TS	Shaft Diameter	1.625 in
Assembly/Box Mounting	F1/F2 CAPABLE		
Outline Drawing	B-SS209022-1512	Connection Drawing	A-EE7308AA-LN

This is an uncontrolled document once printed or downloaded and is subject to change without notice. Date Created:11/10/2022







T12 \_\_\_\_\_  
 T1 \_\_\_\_\_  
 T6 \_\_\_\_\_ L1  
 T7 \_\_\_\_\_

T2 \_\_\_\_\_  
 T4 \_\_\_\_\_  
 T8 \_\_\_\_\_ L2  
 T10 \_\_\_\_\_

T3 \_\_\_\_\_  
 T5 \_\_\_\_\_  
 T9 \_\_\_\_\_ L3  
 T11 \_\_\_\_\_

LOW VOLTAGE

T12 \_\_\_\_\_ L1  
 T1 \_\_\_\_\_

T4 \_\_\_\_\_  
 T7 \_\_\_\_\_

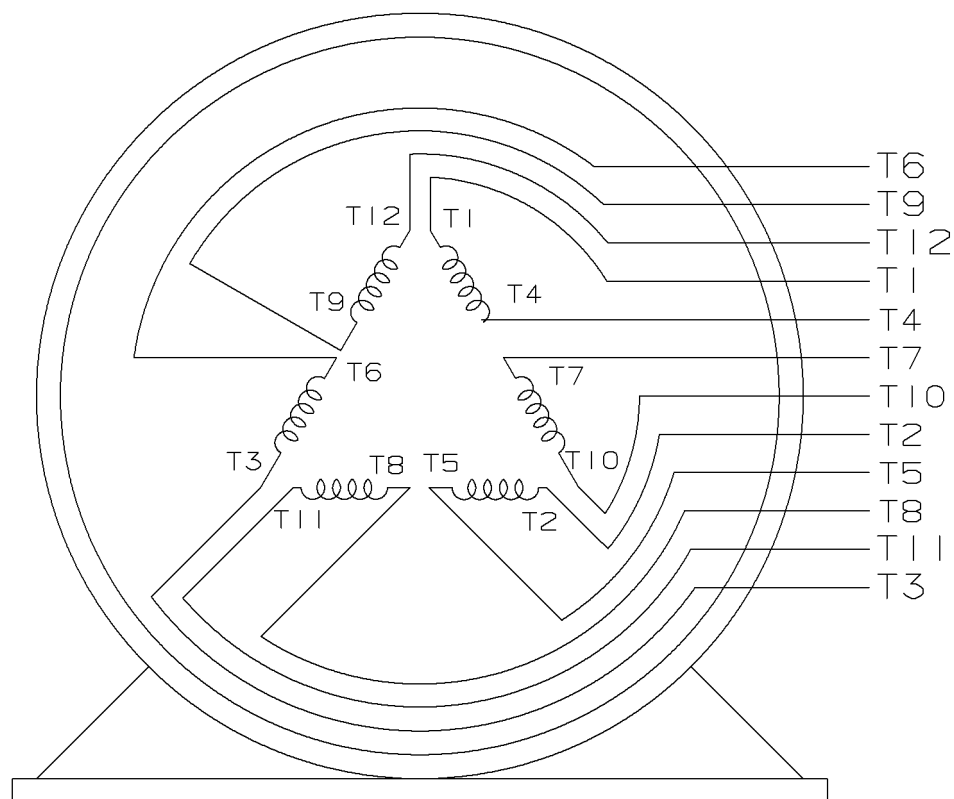
T2 \_\_\_\_\_ L2  
 T10 \_\_\_\_\_

T5 \_\_\_\_\_  
 T8 \_\_\_\_\_

T3 \_\_\_\_\_ L3  
 T11 \_\_\_\_\_

T6 \_\_\_\_\_  
 T9 \_\_\_\_\_

HIGH VOLTAGE



VIEW OF TERMINAL END

					✓ UNLESS OTHERWISE SPECIFIED DIMENSIONS ARE IN INCHES TOL. ON XX±.02 XXX±.005 XXXX±.0005 ANGLES± 7°30"		
2	08-09-1999	RE-ISSUE, ADDED '-' TO PART NUMBER	BLR		MAX. SURFACE ROUGHNESS UNLESS OTHERWISE NOTED		DRAWN BY TRB 07-16-1999
1	06-18-1999	NEW DRAWING	TRB		FINISH		CHKD BY ML 06-18-1999
					MATERIAL		APPD BY GK 06-18-1999
REV	DATE	CHANGE	NAME	PART NAME 3 PHASE CONNECTION DIAGRAM 2/1 DELTA - 12 LEADS			DRWG NO A- EE7308AA-LN
					PURCHASED	CADD FILE NO.	EE7308AALN



ERROR: undefined  
OFFENDING COMMAND: Pscrip  
STACK:



## EC Declaration of Conformity

The undersigned representing  
the manufacturer:

Regal Beloit America  
100 East Randolph St.  
Wausau, WI 54401

and the authorized representative  
established within the Community:

Marathon Electric UK  
6F Thistleton Road Ind. Estate  
Market Overton  
Oakham, Rutland LE15 7PP UK

are committed to providing customers with products that comply with applicable regulations and international protocols to which they are subject, including the requirements of the European Parliament Directive on the Harmonization of the laws relating to electrical equipment designed for use within certain voltage limits (2014/35/EU).

Regal Beloit America declares that the following product(s), to which this declaration relates, are in conformity with the relevant sections of the EC standards listed below.

This statement supersedes any statements previously issued pertaining to the product(s) listed below and is subject to change without notice.

Model No : LM33752

(Model No. may contain prefix and/or suffix characters)

Catalog No : LM33752

Rework No : N/A

Directives :

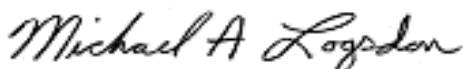
Low Voltage Directive 2014/35/EU

Harmonized Standards Used :

EN 60034-1: 2010 (IEC 60034-1: 2010)

EN 60034-5: 2001/A1:2007 (IEC 60034-5: 2000/A1:2006)

Authorized Representative:



Michael A. Logsdon  
Vice President, Technology

Authorized Representative in the Community:



Julian Clark  
Marketing Engineer

Created on 09/01/2022

**CE 22**