

PRODUCT INFORMATION PACKET

Model No: LM33726

Catalog No: LM33726

..30HP..3600RPM.286TZ.TEFC.230V.3PH.60HZ.CONT.40C.1.0SF.....

Regal and are trademarks of Regal Rexnord Corporation or one of its affiliated companies.
©2022 Regal Rexnord Corporation, All Rights Reserved. MC017097E



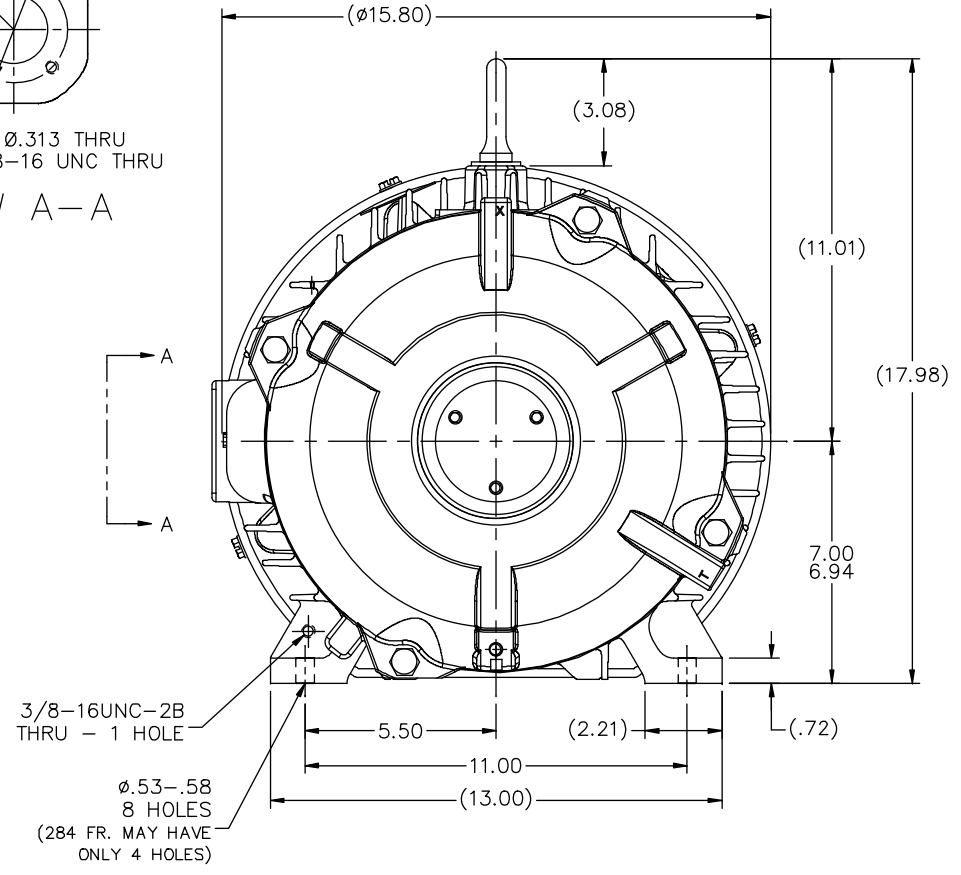
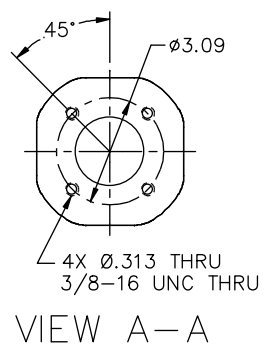
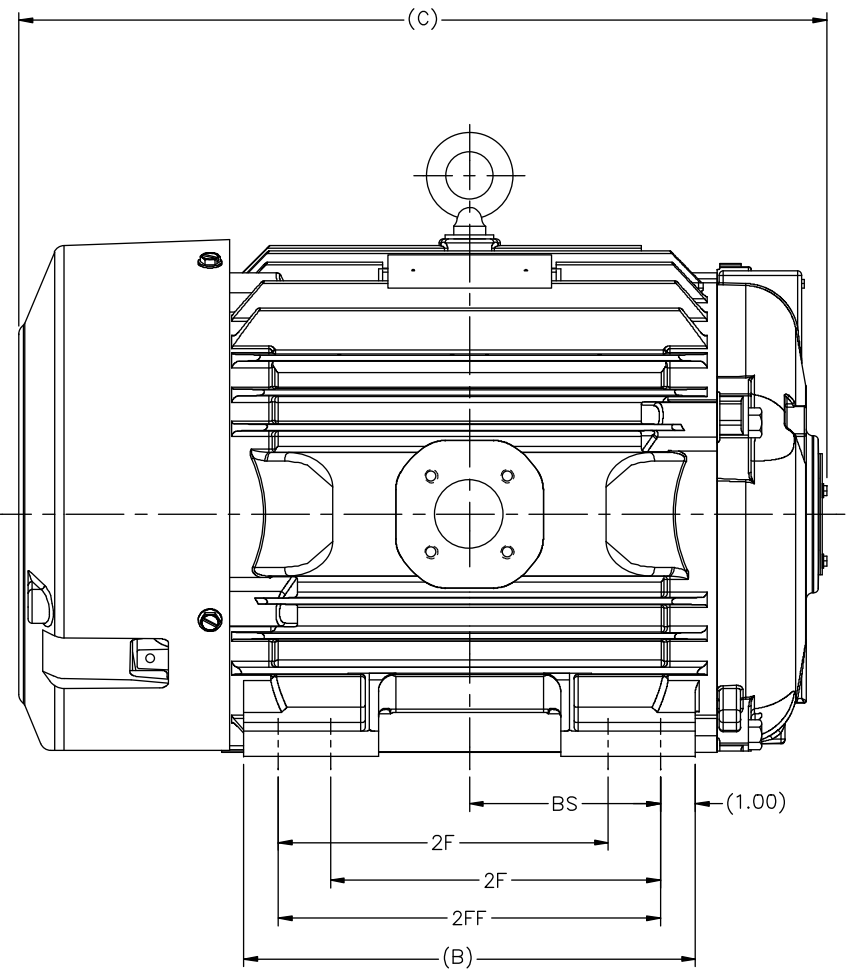
Nameplate Specifications

Output HP	30 Hp	Output KW	22.4 kW
Frequency	60 Hz	Voltage	230 V
Current	69.0 A	Speed	3600 rpm
Service Factor	1	Phase	3
Efficiency	91.6 %	Power Factor	88
Duty	Continuous	Insulation Class	F
Design Code	PC	KVA Code	None
Frame	286TZ	Enclosure	Totally Enclosed Fan Cooled
Thermal Protection	No Protection	Ambient Temperature	40 °C
Drive End Bearing Size	6311	Opp Drive End Bearing Size	6210
UL	No	CSA	N
CE	N	IP Code	43
Number of Speeds	1		

Technical Specifications

Electrical Type	Squirrel Cage Induction Run	Starting Method	Across The Line
Poles	2	Rotation	Reversible
Resistance Main	.195 Ohms	Mounting	Rigid Base
Motor Orientation	Horizontal	Drive End Bearing	Ball
Opp Drive End Bearing	Ball	Frame Material	Cast Iron
Shaft Type	Single Special Extension	Assembly/Box Mounting	F1/F2 CAPABLE
Connection Drawing	A-EE7300U-LN	Outline Drawing	B-SS301451LN-1425

This is an uncontrolled document once printed or downloaded and is subject to change without notice. Date Created:11/10/2022

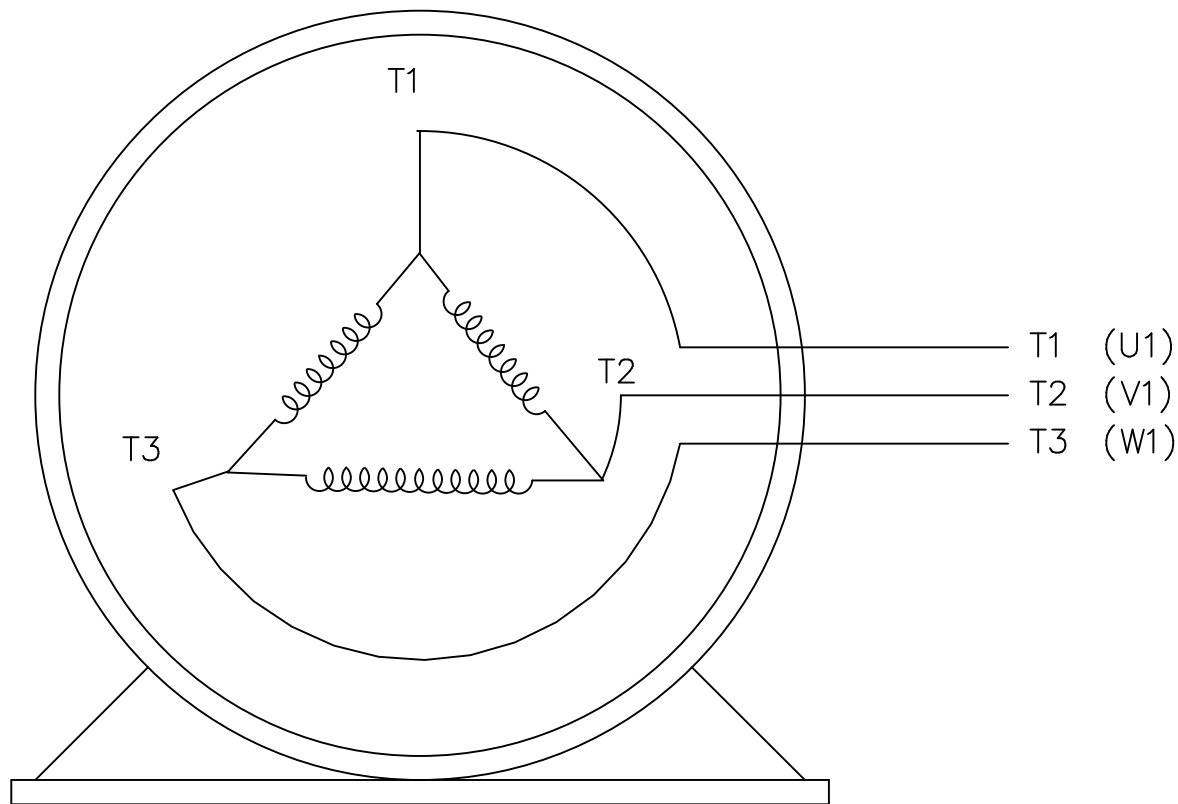
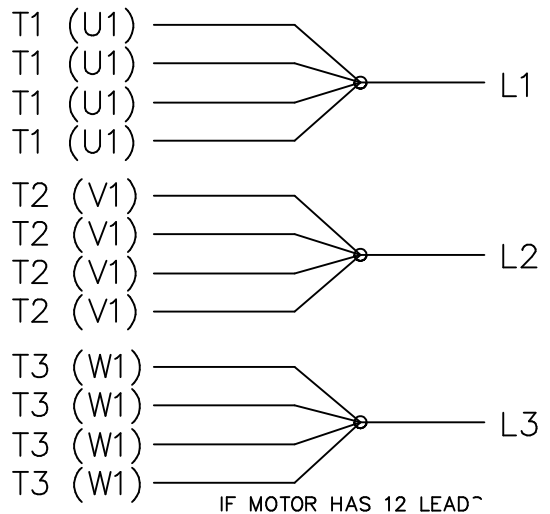
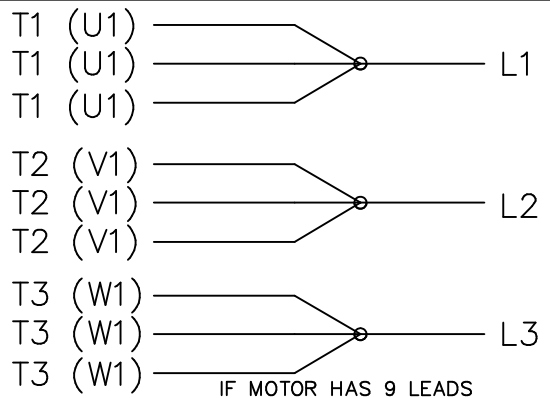
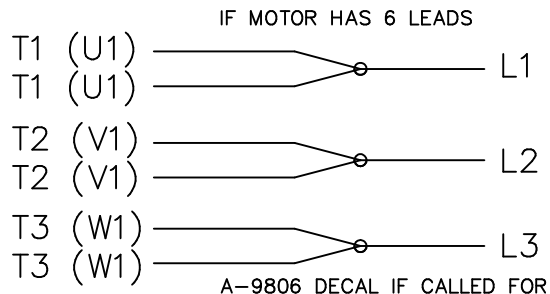


- NOTES:
 1. CONDUIT BOX CAN BE ROTATED CLOCKWISE UP TO 270° FROM ITS ORIGINAL POSITION.
 2. CONDUIT BOX CAN BE MOUNTED ON OPPOSITE SIDE BY REMOVING BRACKETS AND TURNING FRAME 180°.
 3. NAMEPLATE TO BE READ FROM CONDUIT BOX SIDE OF MOTOR.

1275	284T	21.74	12.50	9.50	---	4.75
1425	284/286T	23.24	13.00	9.50	11.00	5.50
DASH	FRAME	C	B	2F	2FF	BS

		TOLERANCES UNLESS SPECIFIED		Lincoln MOTORS	DRAWN WGJ 03-28-2013	
NO.	REVISION	DEC.	INCHES		CHK	DD
		.X	±.1		JG	03-28-2013
		.XX	±.03	TITLE	DD	03-28-2013
		.XXX	±.005	OUTLINE - TEFC - NO EXT.		APPD
		.XXXX	±.0005	280T FR. - BB - STD - 12.50 LAM		JG
				MAT'L.	9-32	SCALE
				FINISH	REF	SS312241LN
					FMF	ECR-0035983
					PREV	
				RFP	03-28-2013	CAD FILE
				ANG	±7'30"	FINISH
				DIST		SS301451LN
						SIZE
						DRAWING NO.
						PAGE
						OF
						REV.
						B
						SS301451LN

THIS DRAWING IN DESIGN AND DETAIL IS OUR PROPERTY AND MUST NOT BE USED EXCEPT IN CONNECTION WITH OUR WORK ALL RIGHTS OF DESIGN AND INVENTION ARE RESERVED THIS IS AN ELECTRONICALLY GENERATED DOCUMENT - DO NOT SCALE THIS PRINT



VIEW OF TERMINAL END

				TOLERANCES UNLESS SPECIFIED			DRAWN KL 12-06-2000	
				DEC.	INCHES		CHK DJK 12-06-2000	
				.X	±.1		APPD DJK 12-06-2000	
				.XX	±.02		SCALE	
2	ADDED TABLES	CN39272	RJW 06-03-2005	ML	.XXX	±.005	TITLE EXTERNAL CONNECTION DIAGRAM	
1	NEW DRAWING	MU34873	KL 12-06-2000		.XXXX	±.0005	3Ø SINGLE VOLTAGE DELTA	
NO.	REVISION	BY & DATE	CHK	ANG	±7'30"		REF	
				RFP	CAD FILE EE7300U_LN		SIZE	DRAWING NO. PAGE OF
				DIST LE			A	EE7300U-LN 2
THIS DRAWING IN DESIGN AND DETAIL IS OUR PROPERTY AND MUST NOT BE USED EXCEPT IN CONNECTION WITH OUR WORK ALL RIGHTS OF DESIGN AND INVENTION ARE RESERVED THIS IS AN ELECTRONICALLY GENERATED DOCUMENT - DO NOT SCALE THIS PRINT								REV. 2