

PRODUCT INFORMATION PACKET



Model No: LM33706

Catalog No: LM33706

..20HP..1750RPM.256TCZ.TEAO.200V.3PH.60HZ.ContinuousAOM.40C.1.0SF.....

Regal and Leeson are trademarks of Regal Rexnord Corporation or one of its affiliated companies.
©2024 Regal Rexnord Corporation, All Rights Reserved. MC017097E





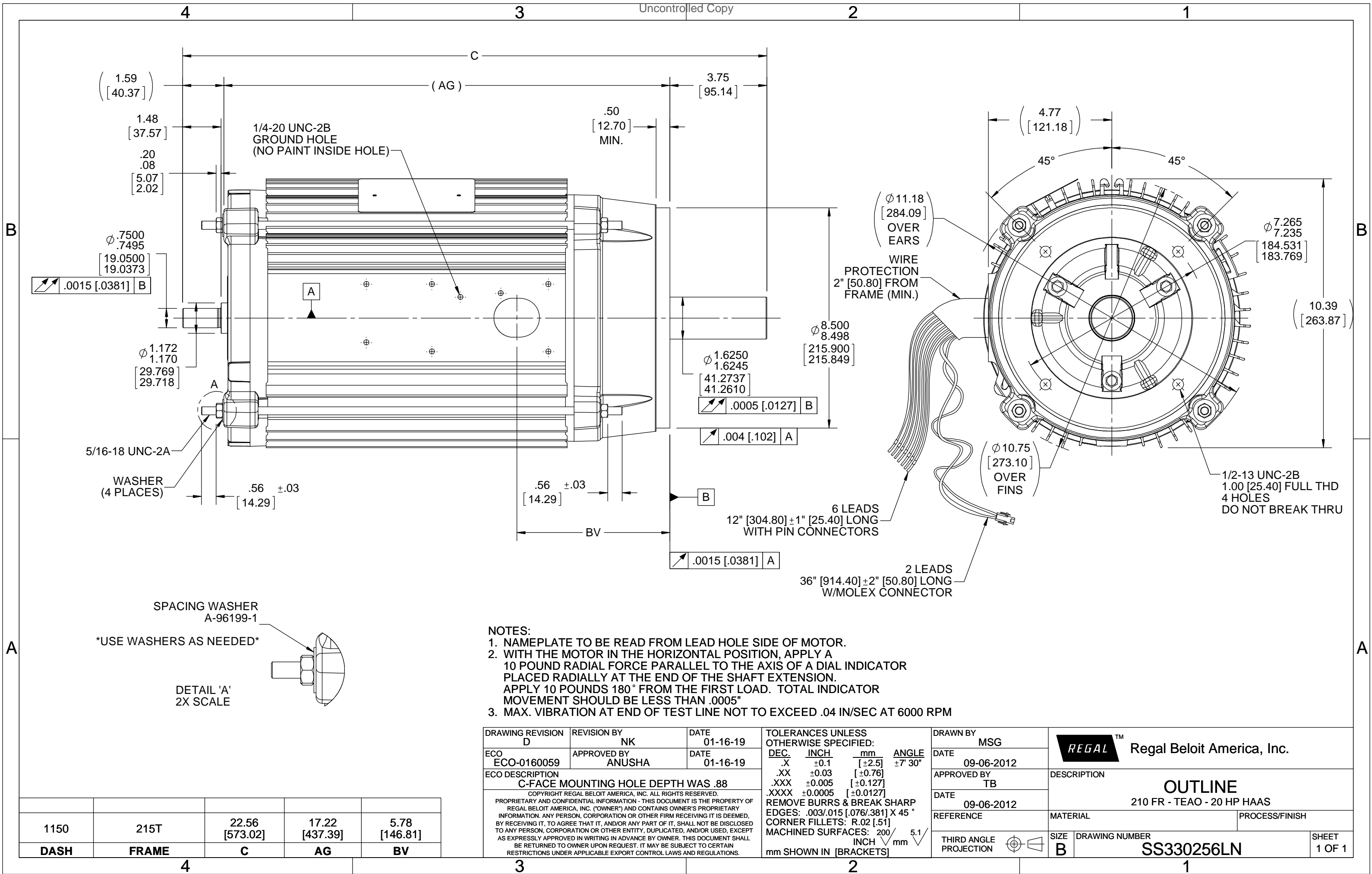
Nameplate Specifications

Phase	3	Output HP	20 Hp
Output KW	14.9 kW	Voltage	200 V
Speed	1758 rpm	Service Factor	1.00
Frame	256TCZ	Enclosure	Totally Enclosed Air Over
Thermal Protection	Thermostat	Efficiency	91 %
Ambient Temperature	40 °C	Frequency	60 Hz
Current	61.0 A	Power Factor	77
Duty	Continuous	Insulation Class	F
Design Code	B	KVA Code	M
Drive End Bearing Size	6309	Opp Drive End Bearing Size	6206
UL	Recognized	CSA	Y
CE	N	IP Code	43
Number of Speeds	1		



Technical Specifications

Electrical Type	Squirrel Cage Induction Run	Starting Method	WYE RUN DELTA BOOST
Poles	4	Rotation	Reversible
Resistance Main	0 Ohms	Mounting	Round
Motor Orientation	Horizontal	Drive End Bearing	Ball
Opp Drive End Bearing	Ball	Frame Material	Aluminum
Shaft Type	Special Extension Both Sides	Shaft Diameter	1.625 in
Assembly/Box Mounting	F1/F2 CAPABLE		
Outline Drawing	B-SS330256LN-1150	Connection Drawing	A-EE7304AE-LN

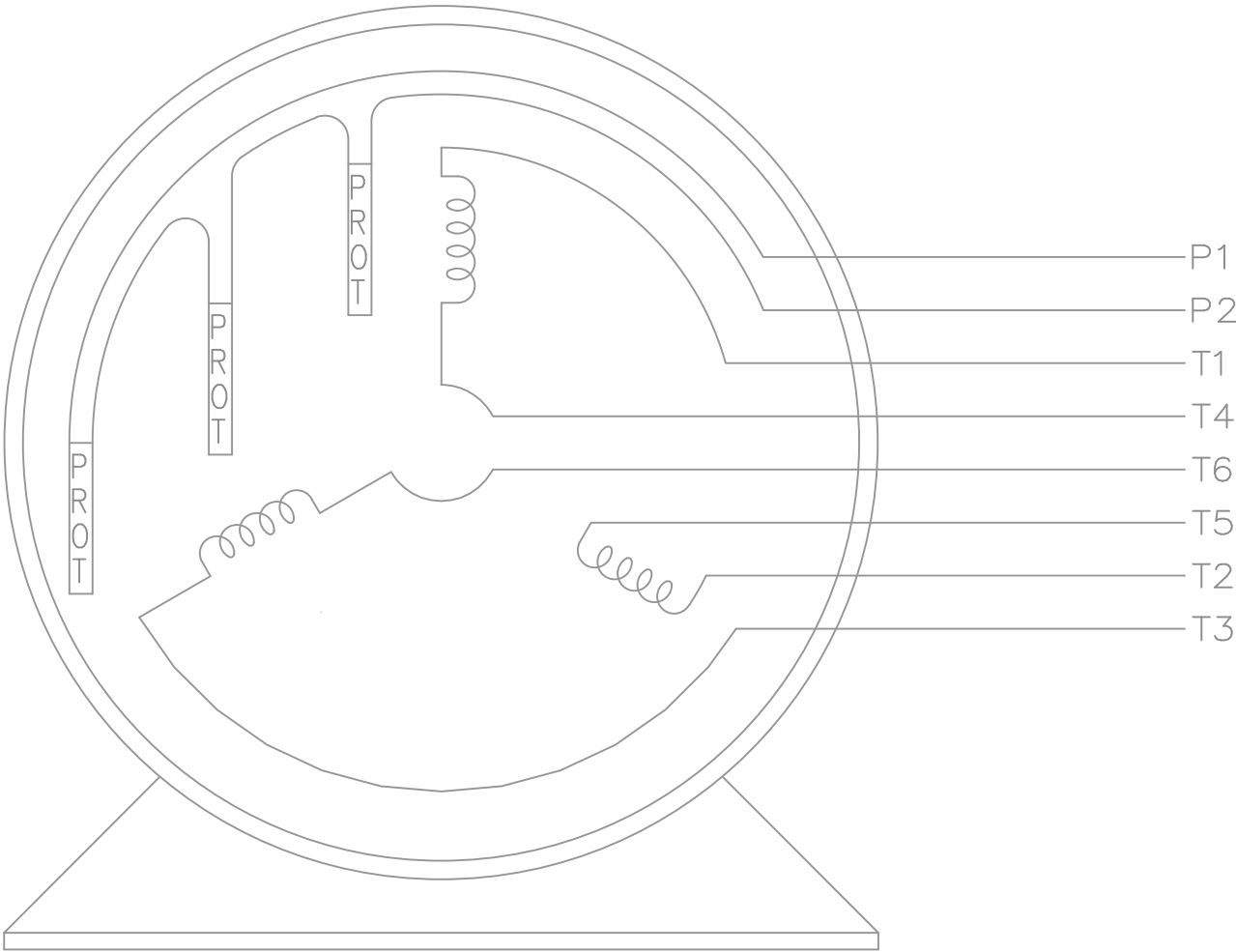
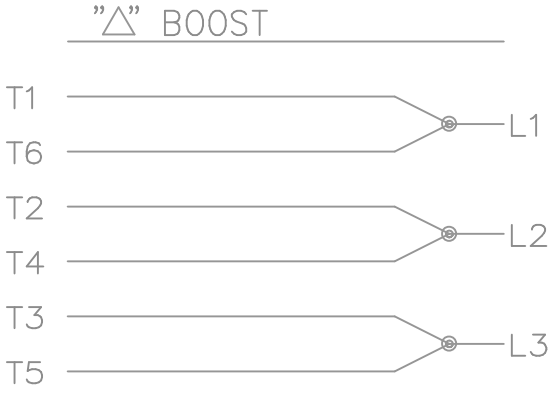
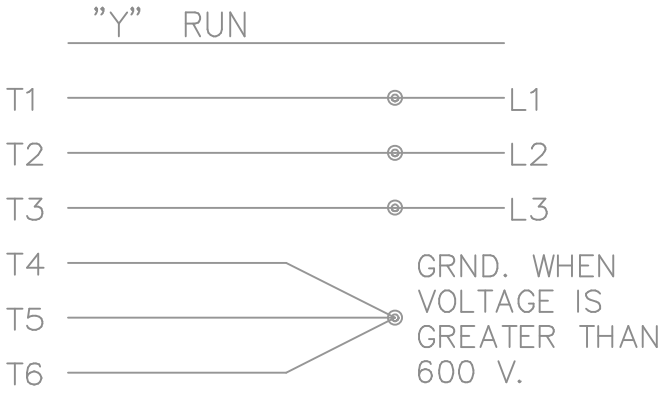
This is an uncontrolled document once printed or downloaded and is subject to change without notice. Date Created:09/12/2024




- NOTES:
1. NAMEPLATE TO BE READ FROM LEAD HOLE SIDE OF MOTOR.
 2. WITH THE MOTOR IN THE HORIZONTAL POSITION, APPLY A 10 POUND RADIAL FORCE PARALLEL TO THE AXIS OF A DIAL INDICATOR PLACED RADIALLY AT THE END OF THE SHAFT EXTENSION. APPLY 10 POUNDS 180° FROM THE FIRST LOAD. TOTAL INDICATOR MOVEMENT SHOULD BE LESS THAN .0005"
 3. MAX. VIBRATION AT END OF TEST LINE NOT TO EXCEED .04 IN/SEC AT 6000 RPM

DRAWING REVISION D		REVISION BY NK		DATE 01-16-19		TOLERANCES UNLESS OTHERWISE SPECIFIED:				DRAWN BY MSG		<div> Regal Beloit America, Inc.</div>											
ECO ECO-0160059		APPROVED BY ANUSHA		DATE 01-16-19		DEC.		INCH		mm		ANGLE		DATE 09-06-2012		DESCRIPTION							
ECO DESCRIPTION C-FACE MOUNTING HOLE DEPTH WAS .88						.X		±0.1		[±2.5]		±7° 30"		APPROVED BY TB		OUTLINE 210 FR - TEAO - 20 HP HAAS							
COPYRIGHT REGAL BELOIT AMERICA, INC. ALL RIGHTS RESERVED. PROPRIETARY AND CONFIDENTIAL INFORMATION - THIS DOCUMENT IS THE PROPERTY OF REGAL BELOIT AMERICA, INC. ("OWNER") AND CONTAINS OWNER'S PROPRIETARY INFORMATION. ANY PERSON, CORPORATION OR OTHER FIRM RECEIVING IT IS DEEMED, BY RECEIVING IT, TO AGREE THAT IT, AND/OR ANY PART OF IT, SHALL NOT BE DISCLOSED TO ANY PERSON, CORPORATION OR OTHER ENTITY, DUPLICATED, AND/OR USED, EXCEPT AS EXPRESSLY APPROVED IN WRITING IN ADVANCE BY OWNER. THIS DOCUMENT SHALL BE RETURNED TO OWNER UPON REQUEST. IT MAY BE SUBJECT TO CERTAIN RESTRICTIONS UNDER APPLICABLE EXPORT CONTROL LAWS AND REGULATIONS.						.XX		±0.03		[±0.76]				DATE 09-06-2012									
						.XXX		±0.005		[±0.127]				REFERENCE		MATERIAL		PROCESS/FINISH					
						.XXXX		±0.0005		[±0.0127]				THIRD ANGLE PROJECTION		<div></div>		SIZE B		DRAWING NUMBER SS330256LN		SHEET 1 OF 1	
						REMOVE BURRS & BREAK SHARP EDGES: .003/.015 [0.076/.381] X 45 ° CORNER FILLETS: R.02 [51] MACHINED SURFACES: 200 INCH 5.1 mm mm SHOWN IN [BRACKETS]																	

WHEN MORE THAN ONE
PROTECTOR IS USED,
CONNECT IN SERIES



VIEW OF TERMINAL END
3Ø DUAL VOLTAGE MOTOR

				TOLERANCES UNLESS SPECIFIED			DRAWN NJS 06-17-2005							
				DEC.	INCHES		CHK ML 06-20-2005							
				.X	±.1		APPD JET 06-20-2005							
				.XX	±.02		TITLE CONNECTION DIAGRAM							
				.XXX	±.005		DUAL VOLTAGE - 3ø - 6 LEAD Δ - Y							
				.XXXX	±.0005	MAT'L.				SCALE 1=1				
										REF				
										FMF				
NO.	REVISION		BY & DATE	CHK	ANG	±7'30"	FINISH				PREV			
THIS DRAWING IN DESIGN AND DETAIL IS OUR PROPERTY AND MUST NOT BE USED EXCEPT IN CONNECTION WITH OUR WORK ALL RIGHTS OF DESIGN AND INVENTION ARE RESERVED THIS IS AN ELECTRONICALLY GENERATED DOCUMENT - DO NOT SCALE THIS PRINT				RFP		06-20-2005	CAD FILE		EE7304AE_LN	SIZE	DRAWING NO.	PAGE	OF	REV.
				DIST		LB			A	EE7304AE-LN				

THIS DRAWING IN DESIGN AND DETAIL IS OUR PROPERTY AND MUST NOT BE USED EXCEPT
IN CONNECTION WITH OUR WORK ALL RIGHTS OF DESIGN AND INVENTION ARE RESERVED
THIS IS AN ELECTRONICALLY GENERATED DOCUMENT - DO NOT SCALE THIS PRINT