

# PRODUCT INFORMATION PACKET



Model No: LM33408

Catalog No: LM33408

LM33408..75/75HP..1800/1500RPM.365TSCZ.ODP.230/460//208/415VAC.3PH.60/50HZ.CONT.40C.....

Regal and Leeson are trademarks of Regal Rexnord Corporation or one of its affiliated companies.

©2023 Regal Rexnord Corporation, All Rights Reserved. MC017097E





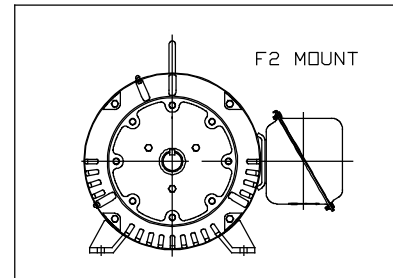
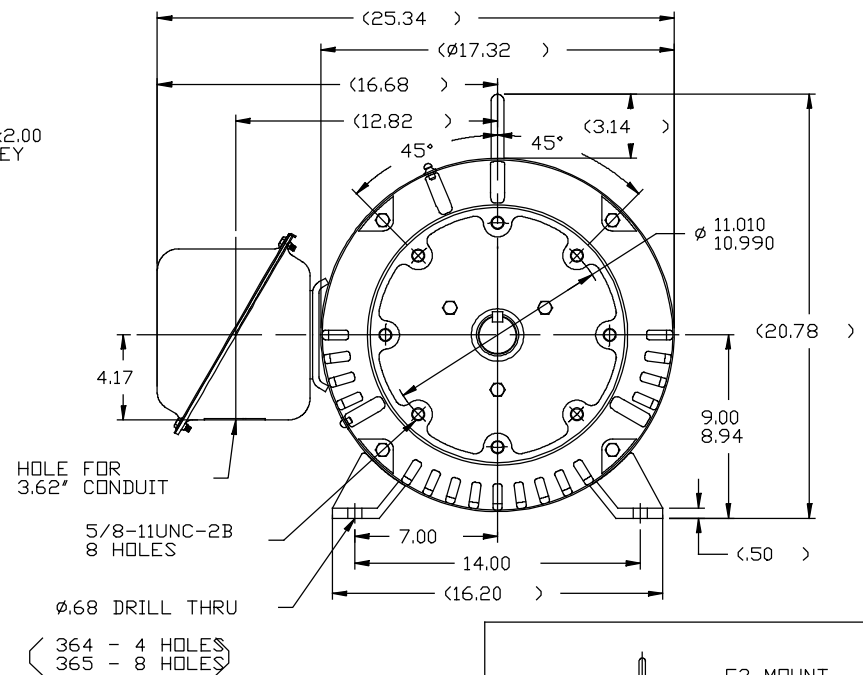
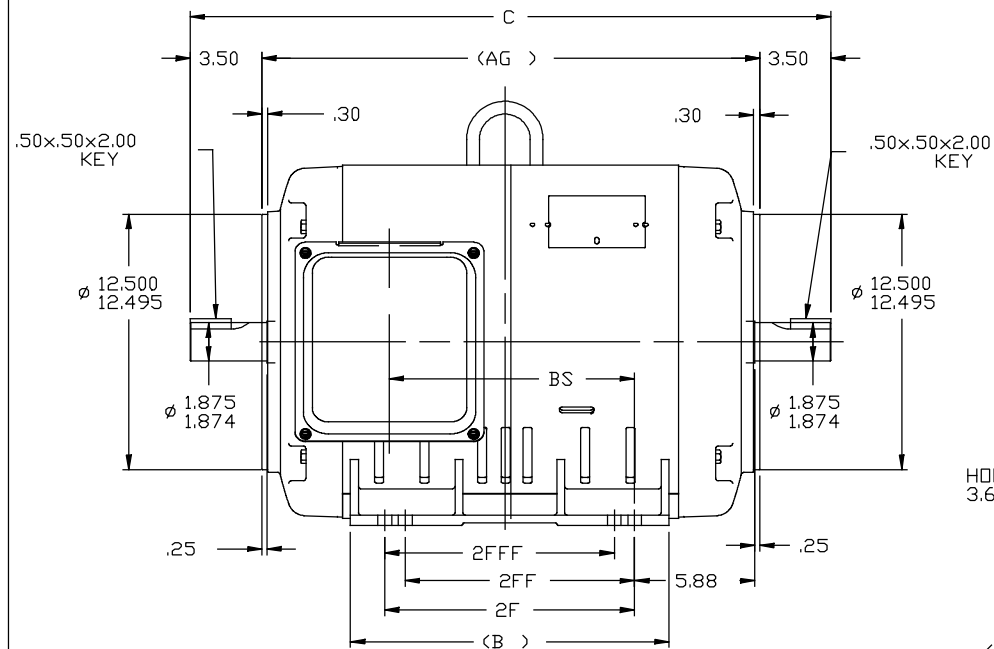
## Nameplate Specifications

Phase	3	Output HP	75 & 75 Hp
Output KW	56.0 & 56.0 kW	Voltage	230/460 & 208/415 V
Speed	1782 & 1480 rpm	Service Factor	1.25 & 1.15
Frame	365TSC	Enclosure	Drip Proof
Thermal Protection	No Protection	Efficiency	95 & 94.5 %
Ambient Temperature	40 °C	Frequency	60 & 50 Hz
Current	176/88 & 200/100 A	Power Factor	84
Duty	Continuous	Insulation Class	F
Design Code	B	KVA Code	G
Drive End Bearing Size	6313	Opp Drive End Bearing Size	6311
UL	Recognized	CSA	Y
CE	Y	IP Code	22
Number of Speeds	1		

## Technical Specifications

Electrical Type	Squirrel Cage Induction Run	Starting Method	Part Wdg Start Low Volt Only & Wye Start Delta Run
Poles	4	Rotation	Reversible
Resistance Main	.067 Ohms	Mounting	Rigid Base
Motor Orientation	Horizontal	Drive End Bearing	Ball
Opp Drive End Bearing	Ball	Frame Material	Rolled Steel
Shaft Type	TS BOTH ENDS	Assembly/Box Mounting	F1/F2 CAPABLE
Outline Drawing	XH2D1CC4-1648	Connection Drawing	3A218-H4

This is an uncontrolled document once printed or downloaded and is subject to change without notice. Date Created:06/23/2023



NOTES:

1. CONDUIT BOX CAN BE ROTATED IN 90° STEPS.
2. NAMEPLATES TO BE READ FROM CONDUIT BOX SIDE OF MOTOR.

[illegible]