

PRODUCT INFORMATION PACKET



Model No: LM33046

Catalog No: LM33046

Elevator Duty Motor, 25 & 30 HP, 3 Ph, 60 & 60 Hz, 230/460 & 230/460 V, 1800 & 1800 RPM,
284T Frame, DP



Regal and Leeson are trademarks of Regal Rexnord Corporation or one of its affiliated companies.

©2023 Regal Rexnord Corporation, All Rights Reserved. MC017097E



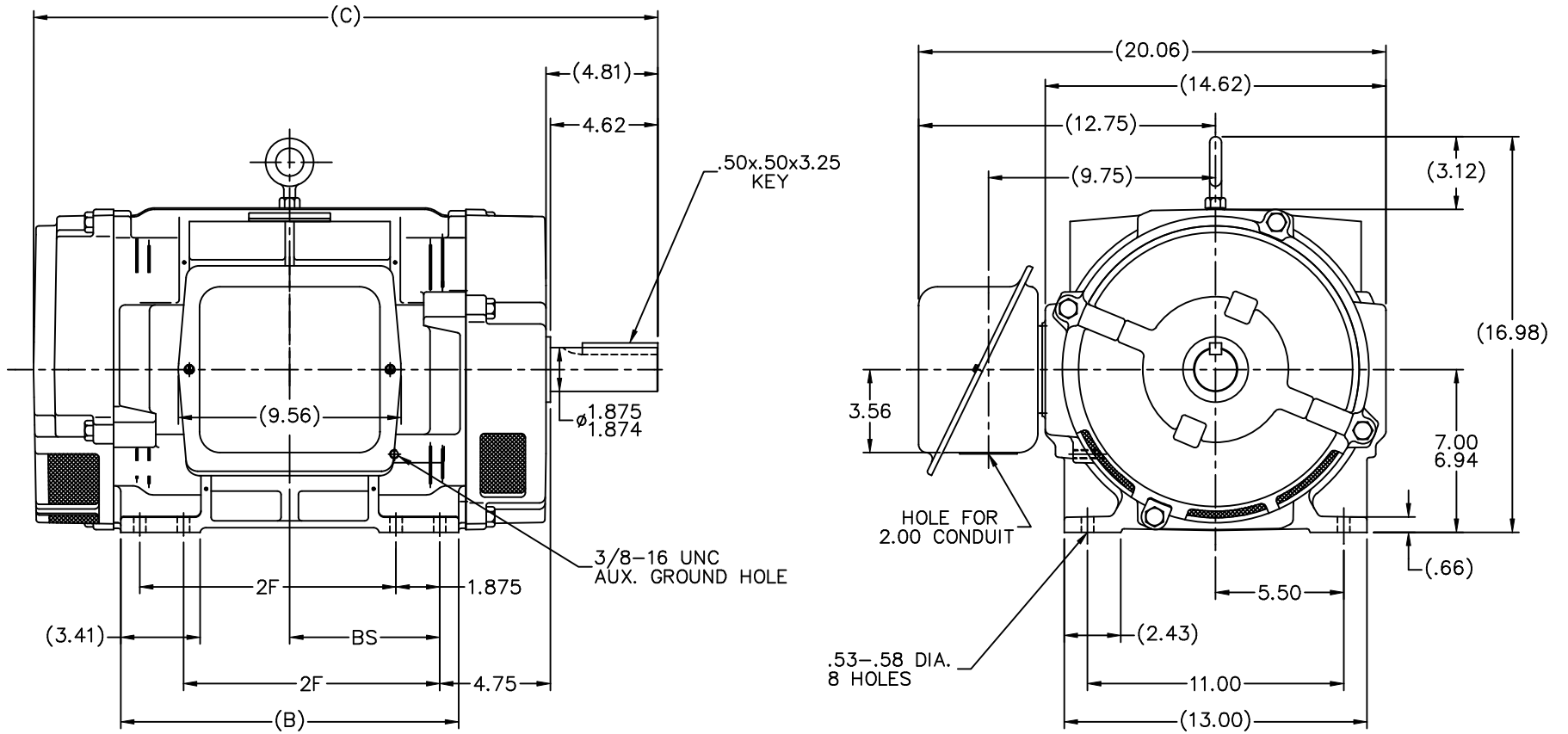


Nameplate Specifications

Phase	3	Output HP	25 & 30 Hp
Output KW	18.7 & 22.4 kW	Voltage	230/460 & 230/460 V
Speed	1775 & 1775 rpm	Service Factor	1.0 & 1.0
Frame	284T	Enclosure	Drip Proof
Thermal Protection	No Protection	Efficiency	93.6 & 92.4 %
Ambient Temperature	40 °C	Frequency	60 & 60 Hz
Current	62/31 & 73/36.5 A	Power Factor	81.5
Duty	120/80 Starts/Hour	Insulation Class	F
Design Code	INV	KVA Code	E
Drive End Bearing Size	6311	Opp Drive End Bearing Size	6210
UL	Recognized	CSA	Y
CE	Y	IP Code	23
Number of Speeds	1		

Technical Specifications

Electrical Type	Squirrel Cage Induction Run	Starting Method	Wye Start Delta Run
Poles	4	Rotation	Reversible
Resistance Main	.255 Ohms	Mounting	Rigid Base
Motor Orientation	Horizontal	Drive End Bearing	Ball
Opp Drive End Bearing	Ball	Frame Material	Cast Iron
Shaft Type	T	Overall Length	24.94 in
Frame Length	13.25 in	Shaft Diameter	1.875 in
Shaft Extension	4.62 in	Assembly/Box Mounting	F1 ONLY
Outline Drawing	SS207470LN-1325	Connection Drawing	EE7358-LN



- NOTES:
1. CONDUIT BOX CAN BE ROTATED IN 90° STEPS.
 2. CONDUIT BOX CAN BE MOUNTED ON OPPOSITE SIDE BY REMOVING BRACKETS AND TURNING FRAME 180°.
 3. NAMEPLATE TO BE READ FROM CONDUIT BOX SIDE OF MOTOR.

DASH	FRAME	B	C	2F	BS	
1325	284T	12.63	24.94	9.50	5.50	02-17-1000
1512	286T	14.50	26.81	11.00	6.44	

		TOLERANCES UNLESS SPECIFIED		Lincoln MOTOR		DRAWN BJV 3/20/2000	
		DEC.	INCHES			CHK	ML 3/21/2000
		.X	±.1			APPD	TB 3/21/2000
2	ADDED SCREENS TO BRACKETS MUB0368	TJW	6/26/2007	MSG	.XXX ±.005	TITLE OUTLINE 280 FR. - TS - DR.PR. - CAST IRON	
1	NEW DRAWING	BJW	3/21/2000	.XXXX	±.0005	SCALE 7=32	
NO.	REVISION	BY & DATE	CHK	ANG	±7'30"	MAT'L	REF
						FINISH	FMF
						CAD FILE SS207470LN	PREV
THIS DRAWING IN DESIGN AND DETAIL IS OUR PROPERTY AND MUST NOT BE USED EXCEPT IN CONNECTION WITH OUR WORK ALL RIGHTS OF DESIGN AND INVENTION ARE RESERVED THIS IS AN ELECTRONICALLY GENERATED DOCUMENT - DO NOT SCALE THIS PRINT						RFP	
						DIST LB	
						SIZE B	DRAWING NO. SS207470LN
						PAGE 1 OF 1	REV. 2

```
ERROR: syntaxerror  
OFFENDING COMMAND: --nostringval--
```

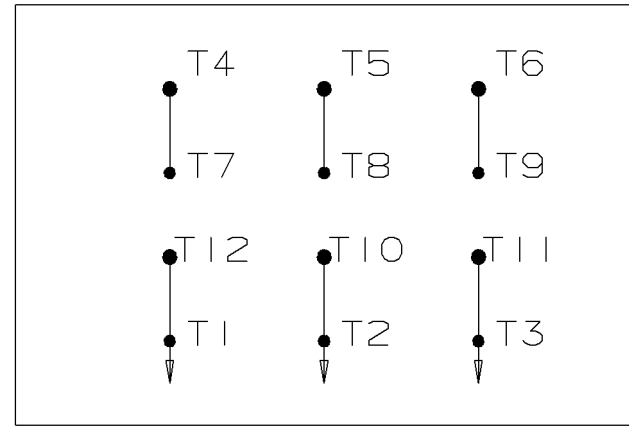
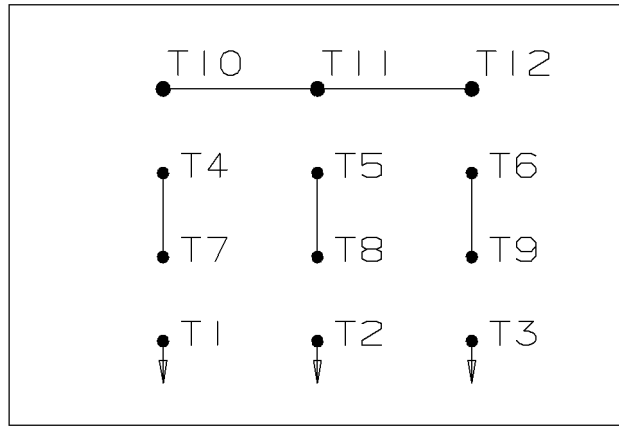
```
STACK:
```

```
/p2e  
-savelevel-
```

WYE START

HIGH VOLTAGE

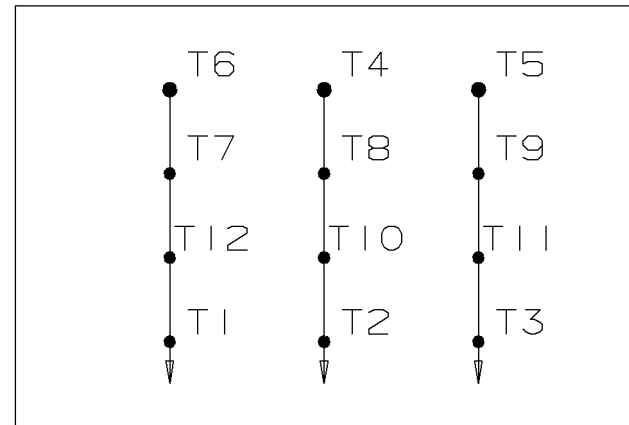
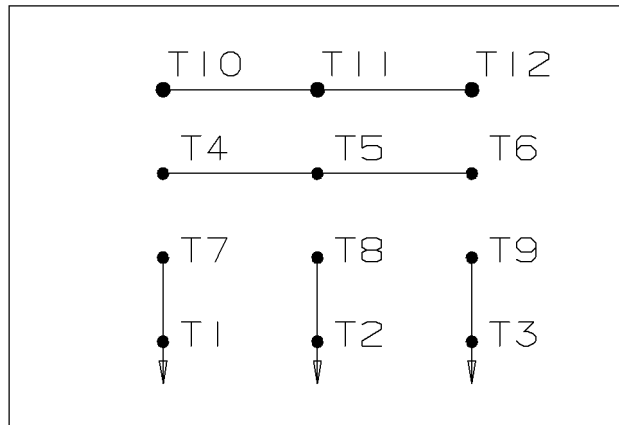
DELTA RUN



WYE START

LOW VOLTAGE

DELTA RUN



4/2 CKTY Δ

					<input checked="" type="checkbox"/> UNLESS OTHERWISE SPECIFIED DIMENSIONS ARE IN INCHES TOL. ON XX± .02 XXX± .005 XXXX± .0005 ANGLES± 7'30"			
						MAX. SURFACE ROUGHNESS UNLESS OTHERWISE NOTED FINISH MATERIAL	DRAWN BY DRS CHKD BY ML APPD BY TB	12-07-1999 12-07-1999 12-07-1999
1	12-07-1999	NEW DRAWING	DRS	PART NAME CONNECTION DIAGRAM			DRWG NO A-EE7358-LN	
REV	DATE	CHANGE	NAME					

PURCHASED | CADD FILE NO. | EE7358-LN



1051 CHEYENNE AVE.
GRAFTON, WI 53024
PH. 262-277-8810

DATA VOLTS: 460

CERTIFICATION DATA SHEET

CONN. DIAGRAM: A-EE7358-LN
OUTLINE: B-SS207470LN-1325
WINDING: K2844135

CAT #: LM33046

R1 3

TYPICAL MOTOR PERFORMANCE DATA

HP	KW	SYNC RPM	FL RPM	FRAME	ENCLOSURE	TYPE	KVA CODE	DESIGN
25	18.7	1800	1775	284T	DP	TDN	G	B

PH	HZ	VOLTS	AMPS	START TYPE	DUTY	INSL	S.F.	AMB	ELEV.
3	60/60	230/460#230/460	62/31&73/36.5	VVE START DELTA RUN	60 MIN	F	1.15	40	3300

F.L. EFF	93.6	3/4 LD EFF	93.0	1/2 LD EFF	92.4	GTD EFF	ELECT. TYPE
F.L. PF	81.5	3/4 LD PF	77.0	1/2 LD PF	67.0	92.4	SQ CAGE IND RUN

F.L. TORQUE	LR AMPS @ 460 V	L.R. TORQUE	B.D. TORQUE	F.L. RISE (° C)
74.0 LB-FT	180	132 LB-FT 178%	210 LB-FT 284%	0

PRESSURE @ 3	SOUND	POWER	ROTOR WK²	MAX. LOAD WK²	SAFE STALL TIME	STARTS/HOUR	MOTOR WGT
72 dBA	81 dBA		4.2 LB-FT²	0 LB-FT²	0 SEC.	0	415 LB.

***** SUPPLEMENTAL INFORMATION *****

DE BRACKET TYPE	ODE BRACKET TYPE	MOUNT TYPE	MOTOR ORIENTATION	SEVERE DUTY	HAZARDOUS LOCATION	DRIP COVER	SCREENS	PAINT
STANDARD	STANDARD	RIGID	HORIZONTAL	NO	NONE	NO	NONE	WATTSAVER

BEARINGS		GREASE	SHAFT TYPE	SPECIAL DE	SPECIAL ODE	SHAFT MATERIAL	FRAME MATERIAL
DE	ODE	POLYREX EM	T	NONE	NONE	1045 HOT ROLLED (C-204)	CAST IRON
BALL	BALL						
311	210						

THERMOSTATS	PROTECTORS	WDG RTD's	BRG RTD's	THERMISTORS	CONTROL	SPACE HEATERS
NONE	NOT	NONE	NONE	NONE	FALSE	NA

R1 (ohms/ph)	R2 (ohms/ph)	X1 (ohms/ph)	X2 (ohms/ph)	Xm (ohms/ph)	VIBRATION (in/sec)	FLOAT
0.16	0.137	0.855	1.06	19.266	0.150	ODE

* N O T E S *	INVERTER TORQUE: NONE INV. HP SPEED RANGE: NONE					
	ENCODER: NONE NONE NONE					
	BRAKE: NONE NONE NONE					
	FT-LB: NA VOLTAGE: NONE					
	HZ: NONE PPR					

DATE:	8/21/2018	UL: V-INS, CONST UL REC
-------	-----------	-------------------------

Data Sheet

Date: 8/21/2018

LM33046



Data @ **460 V**

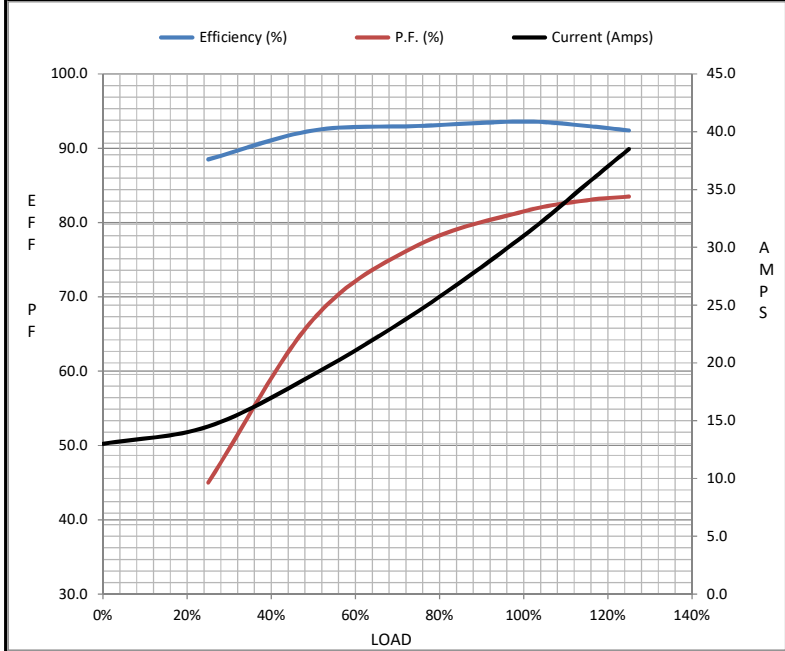
Motor Load Data

Load	0%	25%	50%	75%	100%	115%	125%	LR
Current (Amps)	13.0	14.5	19.0	24.5	31.0	35.5	38.5	180
Torque (ft-lb)	0.00	18.5	37.0	55.5	74.0	85.5	93.0	132
RPM	1800	1795	1785	1780	1775	1,770	1765	0
Efficiency (%)		88.5	92.4	93.0	93.6	93.0	92.4	
P.F. (%)	5.0	45.0	67.0	77.0	81.5	83.0	83.5	36.0

Motor Speed Data

	LR	Pull-Up	BD	Rated	Idle
Speed (RPM)	0	1250	1650	1775	1800
Current (Amps)	180	170	115	31.0	13.0
Torque (ft-lb)	132	125	210	74.0	0.00

Information Block				
HP	25.0			
Sync. RPM	1800			
Frame	284			
Enclosure	DP			
Construction	TDN			
Voltage	230/460#230/460 V			
Frequency	60 Hz			
Design	B			
LR Code letter	G			
Service Factor	1.15			
Temp Rise @ FL	0 ° C			
Duty	60 MIN			
Ambient	40 ° C			
Elevation	1,000 feet			
Rotor/Shaft wk ²	4.2 Lb-Ft ²			
Ref Wdg	K2844135 R1			
Sound Pressure @ 1M	72 dBA			
VFD Rating	NONE			
Outline Dwg	B-SS207470LN-1325			
Conn. Diag	A-EE7358-LN			
Additional Specifications:				
0				
0				
EQUIV CKT (OHMS / PHASE)				
R1	R2	X1	X2	Xm
0.1600	0.1370	0.8550	1.0600	19.2660



Speed - Torque Curve

