

PRODUCT INFORMATION PACKET



Model No: LM32843

Catalog No: LM32843

General Purpose Motor, 50 & 40 HP, 3 Ph, 60 & 50 Hz, 230/460 & 190/380 V, 1800 & 1500 RPM,
326TSC Frame, TEFC



Regal and Leeson are trademarks of Regal Rexnord Corporation or one of its affiliated companies.

©2023 Regal Rexnord Corporation, All Rights Reserved. MC017097E



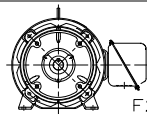
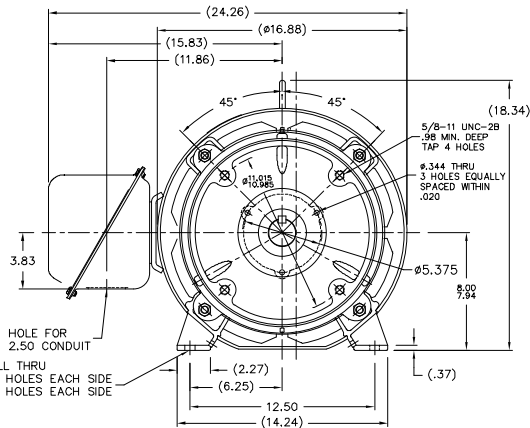
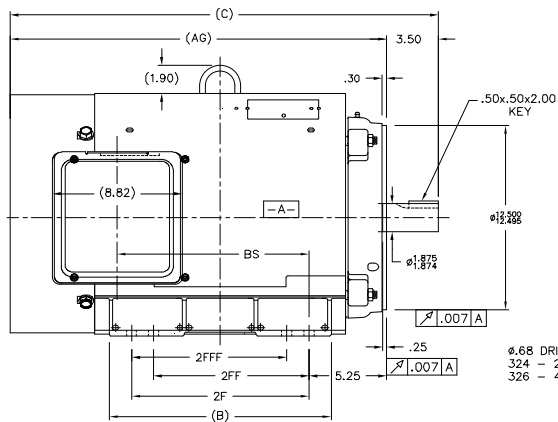


Nameplate Specifications

Phase	3	Output HP	50 & 40 Hp
Output KW	37.0 & 30.0 kW	Voltage	230/460 & 190/380 V
Speed	1785 & 1485 rpm	Service Factor	1.25 & 1.15
Frame	326TSC	Enclosure	Totally Enclosed Fan Cooled
Thermal Protection	No Protection	Efficiency	94.5 & 93.6 %
Ambient Temperature	40 °C	Frequency	60 & 50 Hz
Current	122/61 & 116/58 A	Power Factor	81.5
Duty	Continuous	Insulation Class	F
Design Code	B	KVA Code	H
Drive End Bearing Size	311	Opp Drive End Bearing Size	309
UL	Recognized	CSA	Y
CE	Y	IP Code	43
Number of Speeds	1		

Technical Specifications

Electrical Type	Squirrel Cage Induction Run	Starting Method	Wye Start Delta Run
Poles	4	Rotation	Reversible
Resistance Main	.108 Ohms	Mounting	Rigid Base
Motor Orientation	Horizontal	Drive End Bearing	Ball
Opp Drive End Bearing	Ball	Frame Material	Rolled Steel
Shaft Type	TS	Overall Length	28.94 in
Frame Length	17.00 in	Shaft Diameter	1.875 in
Shaft Extension	3.75 in	Assembly/Box Mounting	F1 ONLY
Connection Drawing	EE7308AA-LN	Outline Drawing	XG2F1SC2-1700




F2 VIEW

NOTES:

1. CONDUIT BOX CAN BE ROTATED IN 90° STEPS.
2. NAMEPLATES TO BE READ FROM CONDUIT BOX SIDE OF MOTOR.

DASH	FRAME	C	BS	B	2F	2FF	2FFF	AG
1550	324TS	27.44	11.46	13.52	10.50	10.50	10.50	23.94
1700	326TS	28.94	12.96	15.02	12.00	10.50	10.50	25.44

		12 FRANCES 12 INCHES DEC. 1902				DRAWING NJS 09-03-2002	
		JX 5.1				CHK ML 09-04-2002	
		JXX 4.03		TITLE OUTLINE NEMA MOTORS		APPD HNH 08-08-2002	
		JXX 4.005		320TSC FR. - TEFC - UE I		SCALE 7=32	
D		JXX 4.005		MATL.		REF	
1		JXX 4.005				FINF	
NEW DRAWING		JXX 4.005				REV	
NO.		JXX 4.005				REV	
REVISION		JXX 4.005				REV	
THIS DRAWING IN DESIGN AND DETAIL IS OUR PROPERTY AND MUST NOT BE USED EXCEPT		JXX 4.005		FINISH		DRAWING NO. PAGE OF	
IN CONNECTION WITH OUR WORK. ALL RIGHTS OF DESIGN AND INVENTION ARE RESERVED		JXX 4.005		CAD FILE XG2F15C2		XG2F15C2	
THERE IS AN ELECTRICALLY GENERATED DOCUMENT - DO NOT SCALE FROM PRINT		JXX 4.005		SIZE		REV.	
		JXX 4.005		BY			

T12 _____
 T1 _____
 T6 _____ L1
 T7 _____

T2 _____
 T4 _____
 T8 _____ L2
 T10 _____

T3 _____
 T5 _____
 T9 _____ L3
 T11 _____

LOW VOLTAGE

T12 _____ L1
 T1 _____

T4 _____
 T7 _____

T2 _____ L2
 T10 _____

T5 _____
 T8 _____

T3 _____ L3
 T11 _____

T6 _____
 T9 _____

HIGH VOLTAGE



VIEW OF TERMINAL END

					✓ UNLESS OTHERWISE SPECIFIED DIMENSIONS ARE IN INCHES TOL. ON XX±.02 XXX±.005 XXXX±.0005 ANGLES± 7°30"		
2	08-09-1999	RE-ISSUE, ADDED '-' TO PART NUMBER	BLR		MAX. SURFACE ROUGHNESS UNLESS OTHERWISE NOTED		DRAWN BY TRB 07-16-1999
					FINISH		CHKD BY ML 06-18-1999
1	06-18-1999	NEW DRAWING	TRB		MATERIAL		APPD BY GK 06-18-1999
REV	DATE	CHANGE	NAME	PART NAME 3 PHASE CONNECTION DIAGRAM 2/1 DELTA - 12 LEADS			DRWG NO A- EE7308AA-LN
				PURCHASED	CADD FILE NO.	EE7308AALN	

ERROR: undefined
OFFENDING COMMAND: Pscrip
STACK:



**2100 WASHINGTON ST.
GRAFTON, WI
PH. 262-277-8810**

CONN. DIAGRAM: A-EE7308AA-LN

OUTLINE: XG2F1SC2-1700

CATALOG #: LM32843

WINDING #: L3264033 1

MOUNTING: F1 ONLY

TYPICAL MOTOR PERFORMANCE DATA

HP	kW	SYNC. RPM	F.L. RPM	FRAME	ENCLOSURE	KVA CODE	DESIGN
50&40	37.0&30.0	1800	1785&1485	326TSC	TEFC	H	B

PH	Hz	VOLTS	AMPS	START TYPE	DUTY	INSL	S.F.	AMB°C
3	60/50	230/460&190/380	122/61&116/58	WYE START DELTA RUN	CONTINUOUS	F1	1.25/1.15	40

FULL LOAD EFF:	94.5&93.6	3/4 LOAD EFF:	94.5	1/2 LOAD EFF:	94.1	GTD. EFF		ELEC. TYPE
FULL LOAD PF:	81.5&83.5	3/4 LOAD PF:	78	1/2 LOAD PF:	70	93		SQ CAGE IND RUN

F.L. TORQUE	LOCKED ROTOR AMPS	L.R. TORQUE	B.D. TORQUE	F.L. RISE°C
147 LB-FT	800 / 400	210 LB-FT 142 %	375 LB-FT 255 %	50

SOUND PRESSURE @ 3 FT.	SOUND POWER	ROTOR WK^2	MAX. WK^2	SAFE STALL TIME	STARTS / HOUR	APPROX. MOTOR WGT
- dBA	- dBA	0 LB-FT^2	- LB-FT^2	- SEC.	-	- LBS.

***** SUPPLEMENTAL INFORMATION *****

DE BRACKET TYPE	ODE BRACKET TYPE	MOUNT TYPE	ORIENTATION	SEVERE DUTY	HAZARDOUS LOCATION	DRIP COVER	SCREENS	PAINT
C-FACE	STANDARD	RIGID	HORIZONTAL	FALSE	NONE	FALSE	NONE	GRAY - LINCOLN

BEARINGS		GREASE	SHAFT TYPE	SPECIAL DE	SPECIAL ODE	SHAFT MATERIAL	FRAME MATERIAL
DE	ODE						
BALL	BALL	POLYREX EM	TS	NONE	NONE	1045 HOT ROLLED (C-204)	ROLLED STEEL
311	309						

THERMO-PROTECTORS				THERMISTORS	CONTROL	SPACE HEATERS
THERMOSTATS	PROTECTORS	WDG RTDs	BRG RTDs			
NONE	NOT	NONE	NONE	NONE	FALSE	NONE VOLTS

*
N
O
T
E
S
*

INVERTER TORQUE: NONE
INV. HP SPEED RANGE: NONE

ENCODER: NONE
NONE NONE
NONE NONE PPR

BRAKE: NONE NONE
NONE P/N NONE
NONE NONE
FT-LB V NONE Hz

Data Sheet

Date: 1/19/2018

LM32843



Data @ 460 V

Motor Load Data

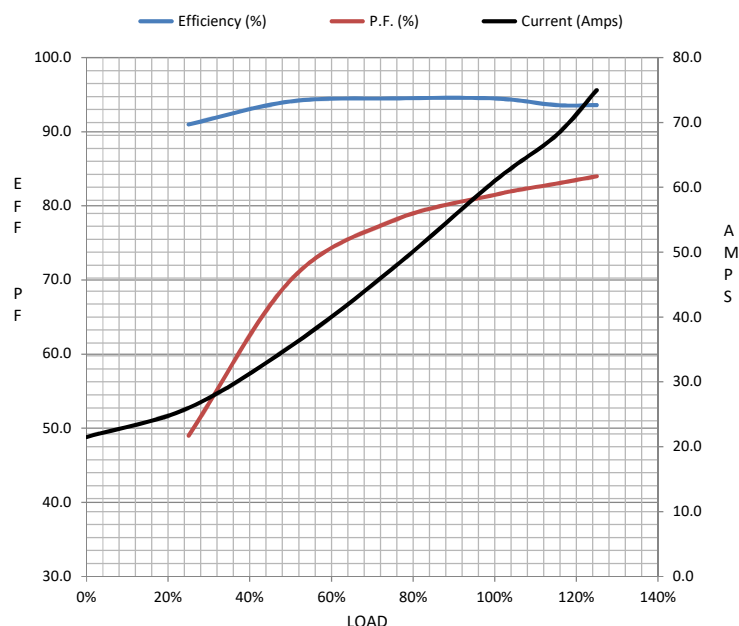
Load	0%	25%	50%	75%	100%	115%	125%	LR	
Current (Amps)	21.5	26.0	35.5	47.5	61.0	68.0	75.0	400	
Torque (ft-lb)	0.00	36.5	73.5	110	147	169	184	210	
RPM	1800	1796	1792	1788	1785	1782	1780	0	
Efficiency (%)		91.0	94.1	94.5	94.5	93.6	93.6		
P.F. (%)	4.0	49.0	70.0	78.0	81.5	83.0	84.0	22.0	

Motor Speed Data

	LR	Pull-Up	BD	Rated	Idle
Speed (RPM)	0	900	1700	1785	1800
Current (Amps)	400	360	260	61.0	21.5
Torque (ft-lb)	210	160	375	147	0.00

Information Block

HP	50.0			
Sync. RPM	1800			
Frame	326			
Enclosure	TEFC			
Construction	TFR			
Voltage	230/460#190/380	V		
Frequency	60	Hz		
Design	A			
LR Code letter	H			
Service Factor	1.15			
Temp Rise @ FL	50	° C		
Duty	CONT			
Ambient	40	° C		
Elevation	1,000	feet		
Rotor/Shaft wk²	0.00	Lb-Ft²		
Ref Wdg	L3264033	NONE		
Sound Pressure @ 1M	999	dBA		
VFD Rating	NONE			
Outline Dwg	XG2F1SC2-1700			
Conn. Diag	A-EE7308AA-LN			
Additional Specifications:				
0				
0				
EQUIV CKT (OHMS / PHASE)				
R1	R2	X1	X2	Xm
0.0770	0.0400	0.4820	0.6460	12.5310



Speed - Torque Curve

