

PRODUCT INFORMATION PACKET



Model No: LM32789

Catalog No: LM32789

General Purpose Motor, 150 & 150 HP, 3 Ph, 60 & 50 Hz, 460 & 415 V, 1800 & 1500 RPM, 444TSC Frame,
DP



Regal and Leeson are trademarks of Regal Rexnord Corporation or one of its affiliated companies.
©2024 Regal Rexnord Corporation, All Rights Reserved. MC017097E



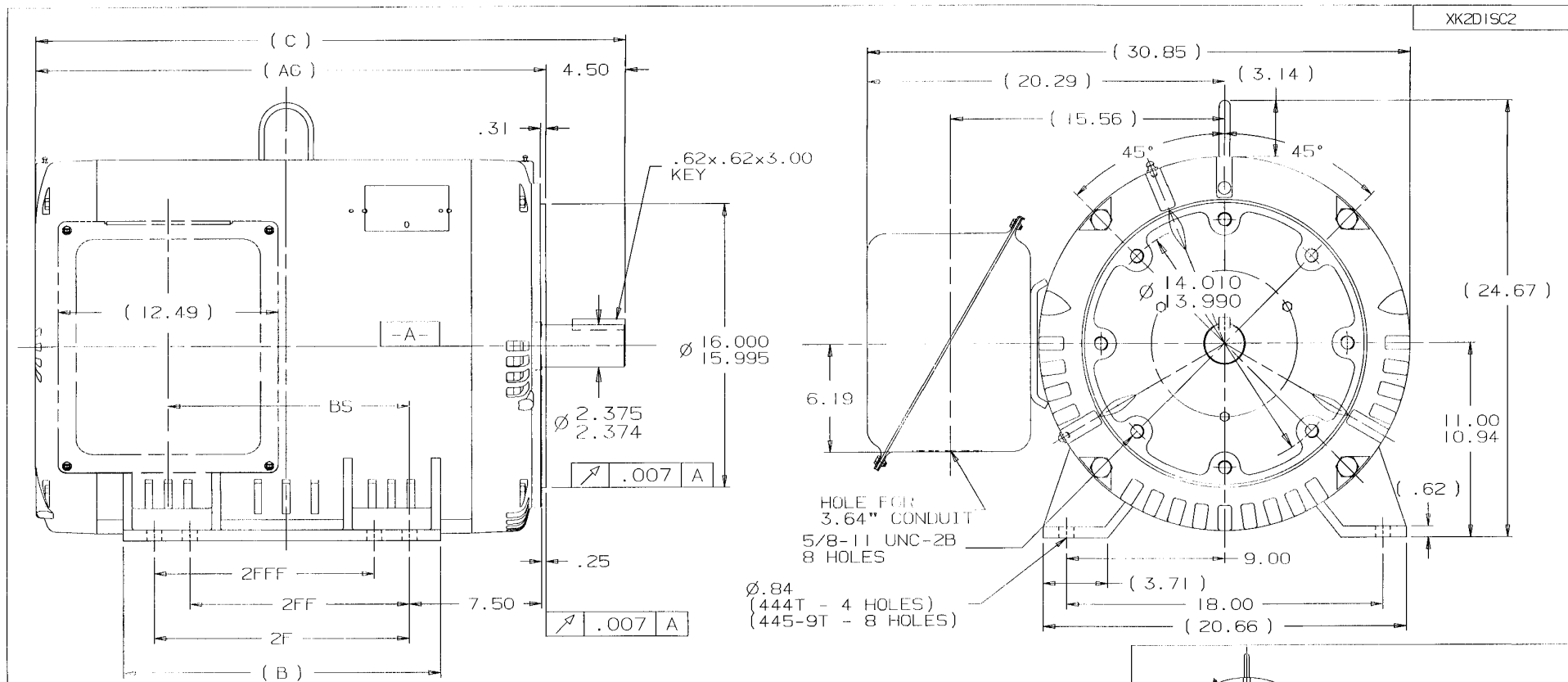


Nameplate Specifications

Phase	3	Output HP	150 & 150 Hp
Output KW	112.0 & 112.0 kW	Voltage	460 & 415 V
Speed	1788 & 1487 rpm	Service Factor	1.25 & 1.15
Frame	444TSC	Enclosure	Drip Proof
Thermal Protection	No Protection	Efficiency	95.8 & 95.8 %
Ambient Temperature	40 °C	Frequency	60 & 50 Hz
Current	170 & 191 A	Power Factor	86
Duty	Continuous	Insulation Class	F
Design Code	BC	KVA Code	G
Drive End Bearing Size	318	Opp Drive End Bearing Size	315
UL	Recognized	CSA	Y
CE	Y	IP Code	22
Number of Speeds	1		

Technical Specifications

Electrical Type	Squirrel Cage Induction Run	Starting Method	Wye Start Delta Run
Poles	4	Rotation	Reversible
Resistance Main	.026 Ohms	Mounting	Rigid Base
Motor Orientation	Horizontal	Drive End Bearing	Ball
Opp Drive End Bearing	Ball	Frame Material	Rolled Steel
Shaft Type	TS	Overall Length	35.50 in
Frame Length	21.27 in	Shaft Diameter	2.375 in
Shaft Extension	4.5 in	Assembly/Box Mounting	F1/F2 CAPABLE
Connection Drawing	EE7340-LN	Outline Drawing	XK2D1SC2-2127



NOTES:

1. CONDUIT BOX CAN BE ROTATED IN 90° STEPS.
2. NAMEPLATES TO BE READ FROM CONDUIT BOX SIDE OF MOTOR.

DASH	FRAME	C	AG	B	2F	2FF	2FFF	BS	REV	DATE	CHANGE	NAME	PART NAME	DRAWG NO
2127	444TS	33.50	29.00	18.00	14.50	---	---	13.96	3	10-30-2001	ADDED 447 AND 449 FRAMES MU39294	DRS	440TS OPD UE	XK2D1SC2
2327	445TS	35.50	31.00	20.00	16.50	14.50	14.50	15.96	2	10-28-2001	GEOMETRIC TOLERANCES WERE .004 SHOULD BE .007 CN 29200 2092	DRS		
2677	447TS	39.00	34.50	23.50	20.00	16.50	16.50	19.46	1	08-30-2001	NEW DRAWING REPLACES 3XSD122FCSK-1 CN 34258	TJB		
3177	449TS	44.00	39.50	28.50	25.00	20.00	20.00	23.71						

PURCHASED

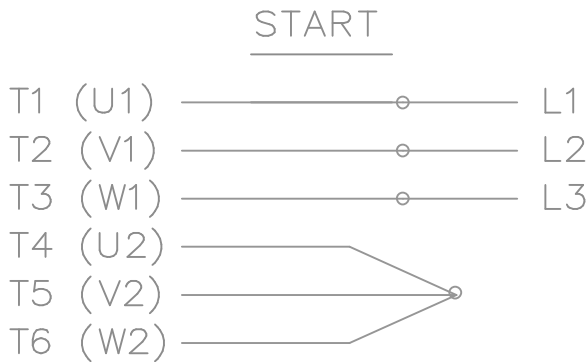
DISTRIBUTION ~~XX~~ - ~~XX~~ - ~~XX~~ - BY CAD FILE NO.

XK2D1SC2

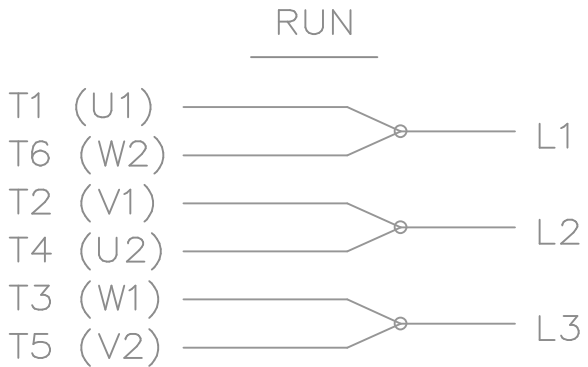
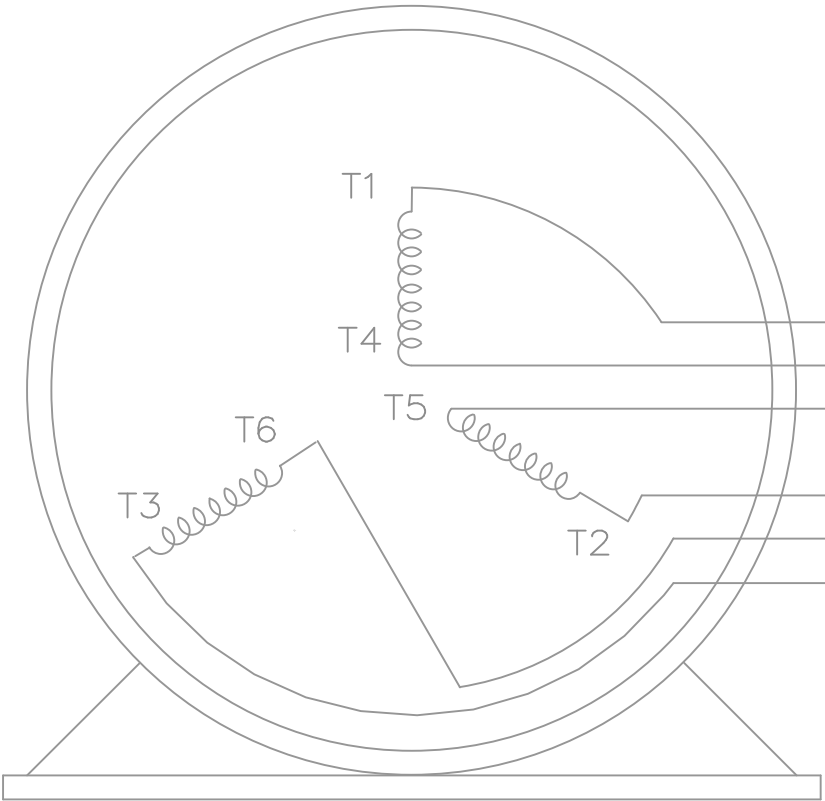
ERROR: syntaxerror
OFFENDING COMMAND: --nostringval--

STACK:

174
/hyphen
173
/logicalnot
172
/guillemotleft
171
/ordfeminine
170
/copyright
169
/dieresis
168
/section
167
/brokenbar
166
/yen
165
/currency
164
/exclamdown
161
/space
160
/Ydieresis
159
/oe
156
/guilsinglright
155
/scaron
154
/trademark
153
/tilde
152
/emdash
151
/endash
150
/bullet
149
/quotedblright
148
/quotedblleft
147
/quoteright
146
/quoteleft
145
/OE
140
/guilsinglleft
139
/Scaron
138
/perthousand
137
/circumflex
136
/daggerdbl
135
/dagger
134
/ellipsis
133
/quotedblbase



THREE PHASE — Y START
 Δ RUN MOTOR




T1 (U1)
 T4 (U2)
 T5 (V2)
 T2 (V1)
 T6 (W2)
 T3 (W1)

T6CK
 T6BM
 T4CC
 T2DL
 T4C

NOTE:
 IEC LEAD MARKINGS ARE NOTED
 IN PARENTHESES

VIEW OF TERMINAL END

				TOLERANCES UNLESS SPECIFIED			DRAWN BLR 10-04-1999			
				DEC.	INCHES		CHK DRS 10-04-1999			
				.X	±.1		APPD TB 10-04-1999			
3	REVISED TO MATCH M.E. ORIGINAL	TAT 07-25-2005	ML	.XX	±.02	TITLE CONNECTION DIAGRAM 3Ø — WYE START DELTA RUN	SCALE 1=1			
2	REVISED DRAWING MISTAKE CN 29200-2980	ERH 05-15-2003	ML	.XXX	±.005		REF			
1	NEW DRAWING	BLR 10-09-1999		.XXXX	±.0005		FMF			
NO.	REVISION	BY & DATE	CHK	ANG	±7'30"	FINISH	PREV			
THIS DRAWING IN DESIGN AND DETAIL IS OUR PROPERTY AND MUST NOT BE USED EXCEPT IN CONNECTION WITH OUR WORK ALL RIGHTS OF DESIGN AND INVENTION ARE RESERVED THIS IS AN ELECTRONICALLY GENERATED DOCUMENT – DO NOT SCALE THIS PRINT			RFP		CAD FILE ee7340_In		SIZE A	DRAWING NO. EE7340-LN	PAGE OF 3	REV. 3
			DIST WA-LB-SB							



1051 CHEYENNE AVE.
GRAFTON, WI 53024
PH. 262-277-8810

DATA VOLTS: 460

CERTIFICATION DATA SHEET

CONN. DIAGRAM: A-EE7340-LN
OUTLINE: XK2D1SC2-2127
WINDING: L4444012

CAT #: LM32789

NONE 1

TYPICAL MOTOR PERFORMANCE DATA

HP	KW	SYNC RPM	FL RPM	FRAME	ENCLOSURE	TYPE	KVA CODE	DESIGN
150	112	1800	1788	444TSC	DP	TDR	G	BC

PH	HZ	VOLTS	AMPS	START TYPE	DUTY	INSL	S.F.	AMB	ELEV.
3	60/50	460#415	170&191	HYE START DELTA RUN	CONT	F	1.15	40	3300

F.L. EFF	95.8	3/4 LD EFF	95.8	1/2 LD EFF	95.4	GTD EFF		ELECT. TYPE	
F.L. PF	86.0	3/4 LD PF	83.5	1/2 LD PF	77.0	95.0		SQ CAGE IND RUN	

F.L. TORQUE	LR AMPS @ 460 V	L.R. TORQUE	B.D. TORQUE	F.L. RISE (° C)
441 LB-FT	1,085	885 LB-FT 201%	1,025 LB-FT 232%	45

PRESSURE @ 3	SOUND	POWER	ROTOR WK²	MAX. LOAD WK²	SAFE STALL TIME	STARTS/HOUR	MOTOR WGT
999 dBA	1008 dBA		0.00 LB-FT²	0 LB-FT²	0 SEC.	0	0 LB.

*** SUPPLEMENTAL INFORMATION ***

DE BRACKET TYPE	ODE BRACKET TYPE	MOUNT TYPE	MOTOR ORIENTATION	SEVERE DUTY	HAZARDOUS LOCATION	DRIP COVER	SCREENS	PAINT
C-FACE	STANDARD	RIGID	HORIZONTAL	NO	NONE	NO	NONE	WATTSaver

BEARINGS	GREASE	SHAFT TYPE	SPECIAL DE	SPECIAL ODE	SHAFT MATERIAL	FRAME MATERIAL
DE ODE						
BALL BALL						
318 315	POLYREX EM	TS	NONE	NONE	1045 HOT ROLLED (C-204)	ROLLED STEEL

THERMOSTATS	PROTECTORS	WDG RTD's	BRG RTD's	THERMISTORS	CONTROL	SPACE HEATERS
NONE	NOT	NONE	NONE	NONE	FALSE	NA

R1 (ohms/ph)	R2 (ohms/ph)	X1 (ohms/ph)	X2 (ohms/ph)	Xm (ohms/ph)	VIBRATION (in/sec)	FLOAT
0.019	0.011	0.174	0.206	5.216	0.150	ODE

* N O T E S *			INVERTER TORQUE: NONE INV. HP SPEED RANGE: NONE ENCODER: NONE NONE NONE NONE PPR

DATE: 9/10/2018	BRAKE: NONE	
	NONE	NONE
	FT-LB: NA	
VOLTAGE: NONE		HZ:
UL: V-INS, CONST UL REC		

Data Sheet

Date: 9/10/2018

LM32789



Data @ 460 V

Motor Load Data

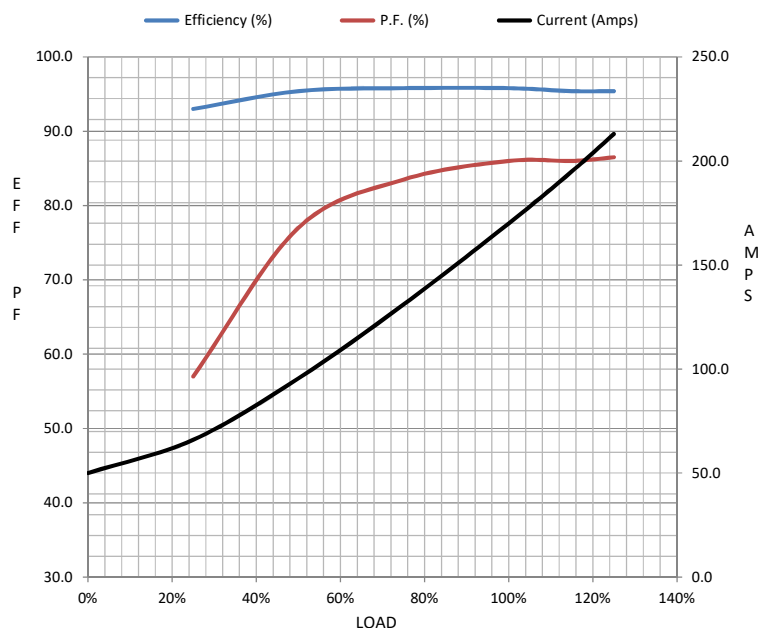
Load	0%	25%	50%	75%	100%	115%	125%	LR	
Current (Amps)	50.0	66.0	95.5	131	170	195	213	1,085	
Torque (ft-lb)	0.00	110	220	330	441	507	552	885	
RPM	1800	1797	1795	1790	1788	1,786	1784	0	
Efficiency (%)		93.0	95.4	95.8	95.8	95.4	95.4		
P.F. (%)	4.0	57.0	77.0	83.5	86.0	86.0	86.5	30.5	

Motor Speed Data

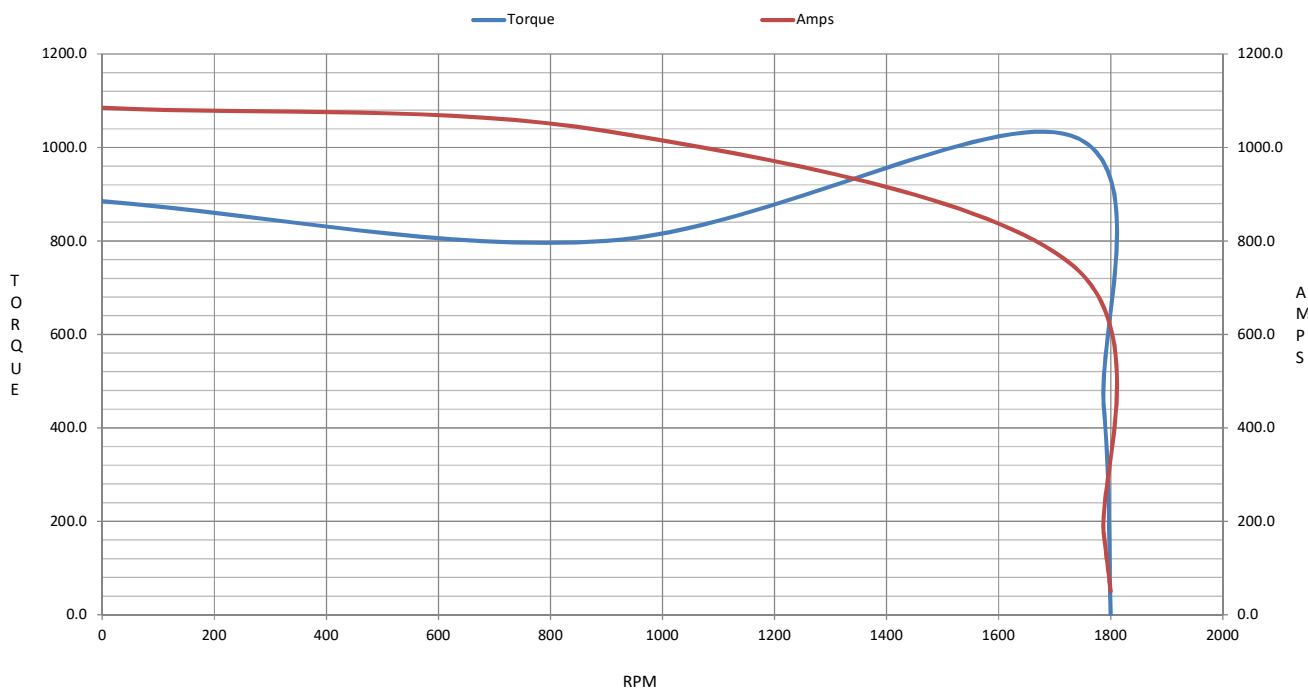
	LR	Pull-Up	BD	Rated	Idle
Speed (RPM)	0	900	1730	1788	1800
Current (Amps)	1,085	1,035	750	170	50.0
Torque (ft-lb)	885	800	1,025	441	0.00

Information Block

HP	150.0			
Sync. RPM	1800			
Frame	444			
Enclosure	DP			
Construction	TDR			
Voltage	460#415		V	
Frequency	60		Hz	
Design	A			
LR Code letter	G			
Service Factor	1.15			
Temp Rise @ FL	45		° C	
Duty	CONT			
Ambient	40		° C	
Elevation	1,000		feet	
Rotor/Shaft wk²	0.00		Lb-Ft²	
Ref Wdg	L4444012	NONE		
Sound Pressure @ 1M	999		dBA	
VFD Rating	NONE			
Outline Dwg	XK2D1SC2-2127			
Conn. Diag	A-EE7340-LN			
Additional Specifications:				
0				
0				
EQUIV CKT (OHMS / PHASE)				
R1	R2	X1	X2	Xm
0.0190	0.0110	0.1740	0.2060	5.2160



Speed - Torque Curve



EC Declaration of Conformity

The undersigned representing
the manufacturer:

Regal Beloit America
100 East Randolph St.
Wausau, WI 54401

and the authorized representative
established within the Community:

Marathon Electric UK
6F Thistleton Road Ind. Estate
Market Overton
Oakham, Rutland LE15 7PP UK

are committed to providing customers with products that comply with applicable regulations and international protocols to which they are subject, including the requirements of the European Parliament Directive on the Harmonization of the laws relating to electrical equipment designed for use within certain voltage limits (2014/35/EU).

Regal Beloit America declares that the following product(s), to which this declaration relates, are in conformity with the relevant sections of the EC standards listed below.

This statement supersedes any statements previously issued pertaining to the product(s) listed below and is subject to change without notice.

Model No : LM32789

(Model No. may contain prefix and/or suffix characters)

Catalog No : LM32789

Rework No : N/A

Directives :

Low Voltage Directive 2014/35/EU

Harmonized Standards Used :

EN 60034-1: 2010 (IEC 60034-1: 2010)

EN 60034-5: 2001/A1:2007 (IEC 60034-5: 2000/A1:2006)

Authorized Representative:



Michael A. Logsdon
Vice President, Technology

Authorized Representative in the Community:



Julian Clark
Marketing Engineer

Created on 11/21/2023

CE 23