

PRODUCT INFORMATION PACKET



Model No: LM32760

Catalog No: LM32760

General Purpose Motor, 150 & 125 HP, 3 Ph, 60 & 50 Hz, 460 & 380 V, 1800 & 1500 RPM, 444TS Frame,
DP



Regal and Leeson are trademarks of Regal Rexnord Corporation or one of its affiliated companies.

©2023 Regal Rexnord Corporation, All Rights Reserved. MC017097E



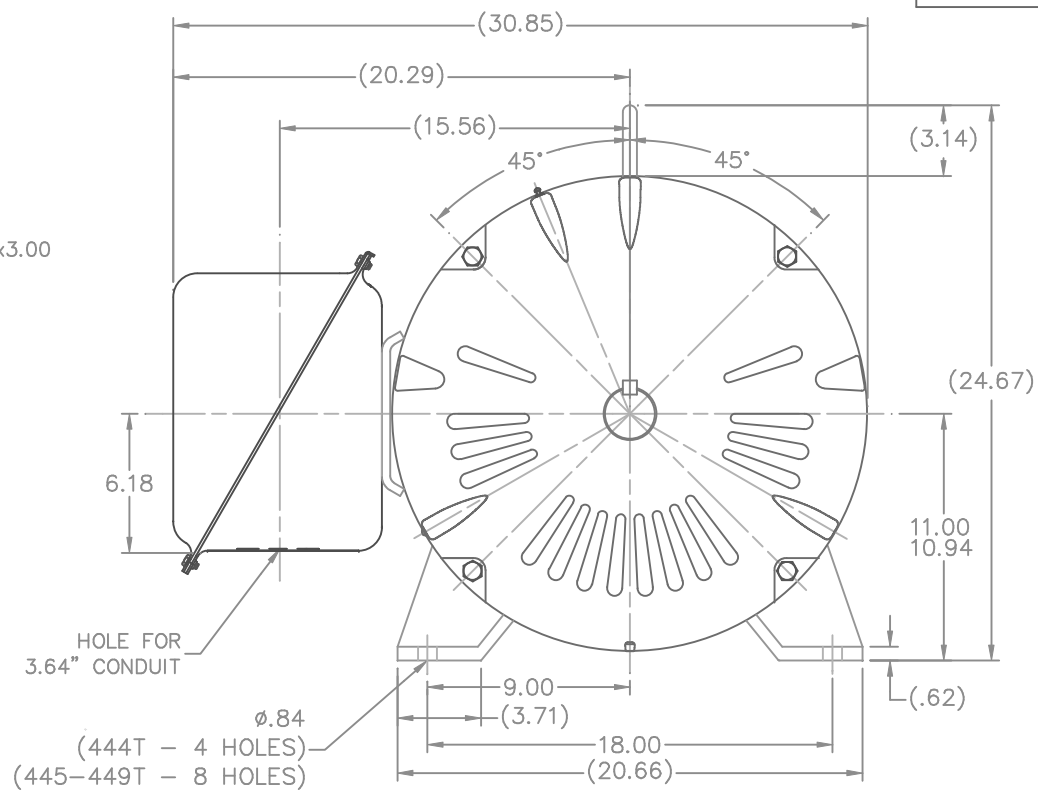
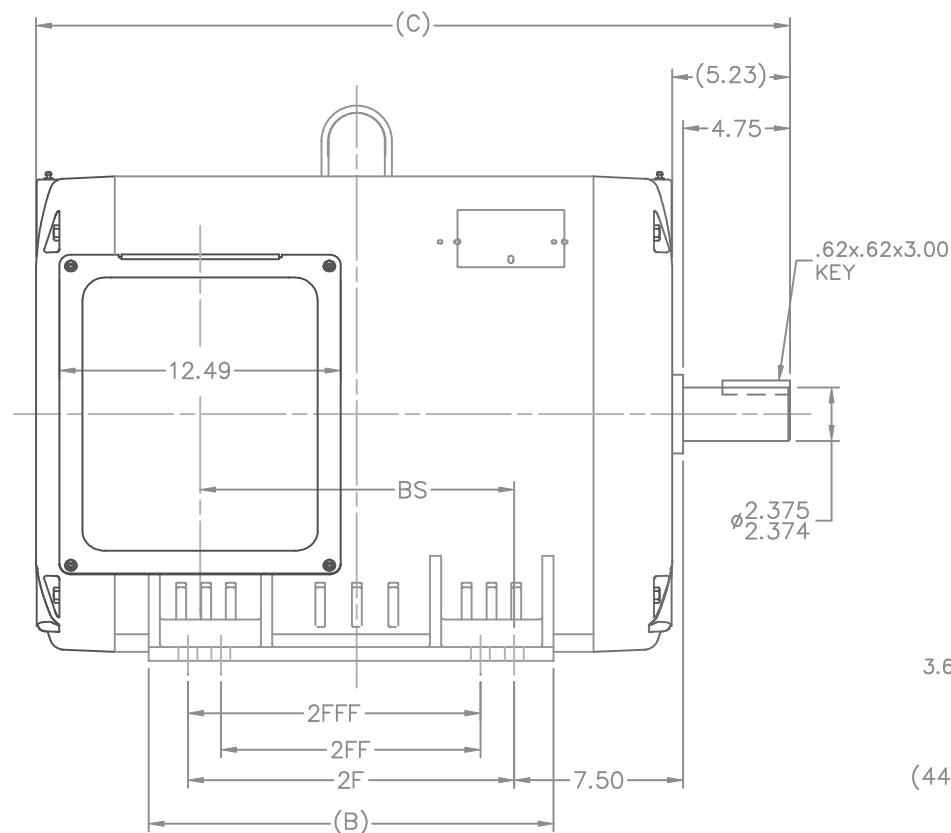


Nameplate Specifications

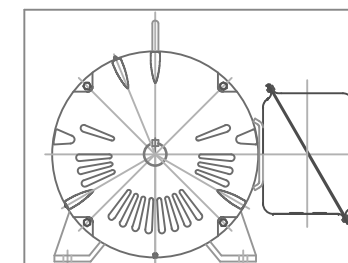
Phase	3	Output HP	150 & 125 Hp
Output KW	112.0 & 93.0 kW	Voltage	460 & 380 V
Speed	1788 & 1488 rpm	Service Factor	1.25 & 1.15
Frame	444TS	Enclosure	Drip Proof
Thermal Protection	No Protection	Efficiency	95.8 & 95.8 %
Ambient Temperature	40 °C	Frequency	60 & 50 Hz
Current	170 & 172 A	Power Factor	86
Duty	Continuous	Insulation Class	F
Design Code	BC	KVA Code	G
Drive End Bearing Size	318	Opp Drive End Bearing Size	315
UL	Recognized	CSA	Y
CE	Y	IP Code	22
Number of Speeds	1		

Technical Specifications




Electrical Type	Squirrel Cage Induction Run	Starting Method	Wye Start Delta Run
Poles	4	Rotation	Reversible
Resistance Main	.026 Ohms	Mounting	Rigid Base
Motor Orientation	Horizontal	Drive End Bearing	Ball
Opp Drive End Bearing	Ball	Frame Material	Rolled Steel
Shaft Type	TS	Overall Length	33.50 in
Frame Length	21.27 in	Shaft Diameter	2.375 in
Shaft Extension	4.75 in	Assembly/Box Mounting	F1 ONLY
Connection Drawing	A-EE7340-LN	Outline Drawing	XK2D1SS2-2127



- NOTES:
 1. CONDUIT BOX CAN BE ROTATED IN 90° STEPS.
 2. NAMEPLATES TO BE READ FROM CONDUIT BOX
 SIDE OF MOTOR.

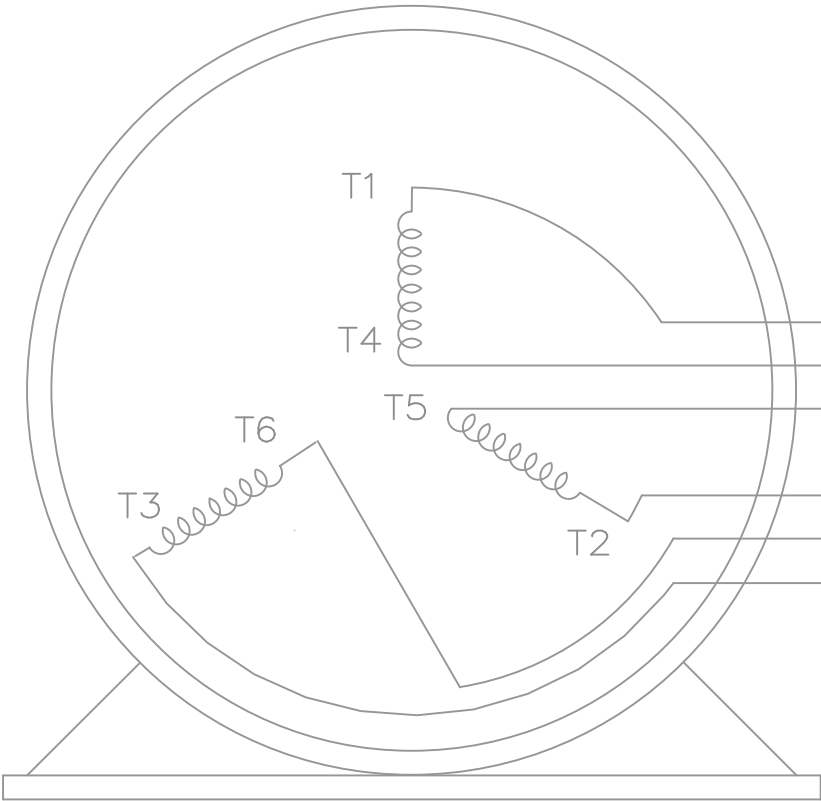


F2 VIEW

								TOLERANCES UNLESS SPECIFIED					DRAWN TJB 08-08-2001										
								DEC.	INCHES			CHK	ML 08-23-2001										
DASH	FRAME	C	B	BS	2F	2FF	2FFF	4	REVISED FROM 4 TO 4-8 HOLES PER CN 37556	CTO 12-17-2001	IB	.X	±.1	TITLE OUTLINE NEMA MOTORS 440TS OPD UE	APPD HNH 08-30-2001								
2127	444TS	33.50	18.00	13.96	14.50			3	ADDED DASHES 2677 & 3177 CN 29200-2314	CTO 03-22-03	JNH	.XX	±.03		SCALE 1=5.5								
2327	445TS	35.50	20.00	15.96	16.50	14.50	14.50	2	ADDED DASH 2327 CN 29200-2238	NJS 02-22-02	DRS	.XXX	±.005		REF								
2677	447TS	39.00	23.50	19.46	20.00	16.50	16.50	1	NEW DRAWING - REPLACES 3XSD134FSSK-1 MU38160	TJB 08-30-01	ML	.XXXX	±.0005		FMF								
NO.								REVISION		BY & DATE		CHK	ANG	±1/2"	FINISH	PREV							
3177								449TS		44.00		28.50		24.46		25.00		20.00		20.00			
THIS DRAWING IN DESIGN AND DETAIL IS OUR PROPERTY AND MUST NOT BE USED EXCEPT IN CONNECTION WITH OUR WORK ALL RIGHTS OF DESIGN AND INVENTION ARE RESERVED THIS IS AN ELECTRONICALLY GENERATED DOCUMENT - DO NOT SCALE THIS PRINT										RFP		DIST BY		CAD FILE		xk2d1ss2		SIZE		DRAWING NO.		REV.	
																		B		XK2D1SS2		4	



THREE PHASE — Y START
 Δ RUN MOTOR




T1 (U1)
 T4 (U2)
 T5 (V2)
 T2 (V1)
 T6 (W2)
 T3 (W1)

T6CK
 T6BM
 T4CC
 T2DL
 T4C

NOTE:
 IEC LEAD MARKINGS ARE NOTED
 IN PARENTHESES

VIEW OF TERMINAL END

			TOLERANCES UNLESS SPECIFIED			DRAWN BLR 10-04-1999		
			DEC.	INCHES		CHK DRS 10-04-1999		
			.X	±.1		APPD TB 10-04-1999		
3	REVISED TO MATCH M.E. ORIGINAL	TAT 07-25-2005	ML	.XX	±.02	TITLE CONNECTION DIAGRAM 3Ø — WYE START DELTA RUN	SCALE 1=1	
2	REVISED DRAWING MISTAKE CN 29200-2980	ERH 05-15-2003	ML	.XXX	±.005		REF	
1	NEW DRAWING	BLR 10-09-1999		.XXXX	±.0005	MAT'L.	FMF	
NO.	REVISION	BY & DATE	CHK	ANG	±'30"	FINISH	PREV	
THIS DRAWING IN DESIGN AND DETAIL IS OUR PROPERTY AND MUST NOT BE USED EXCEPT IN CONNECTION WITH OUR WORK ALL RIGHTS OF DESIGN AND INVENTION ARE RESERVED THIS IS AN ELECTRONICALLY GENERATED DOCUMENT — DO NOT SCALE THIS PRINT			RFP	CAD FILE ee7340_In		SIZE	DRAWING NO.	PAGE OF
			DIST	WA-LB-SB		A	EE7340-LN	3



CERTIFICATION DATA SHEET

2100 WASHINGTON ST.
GRAFTON, WI
PH. 262-277-8810

CONN. DIAGRAM: A-EE7340-LN

OUTLINE: XK2D1SS2-2127

CATALOG #: LM32760

WINDING #: L4444012 1

MOUNTING: F1 ONLY

TYPICAL MOTOR PERFORMANCE DATA

HP	kW	SYNC. RPM	F.L. RPM	FRAME	ENCLOSURE	KVA CODE	DESIGN
150&125	112&93.0	1800	1788&1488	444TS	DP	G	BC

PH	Hz	VOLTS	AMPS	START TYPE	DUTY	INSL	S.F.	AMB°C
3	60/50	460&380	170&172	WYE START DELTA RUN	CONTINUOUS	F1	1.25/1.15	40

FULL LOAD EFF:	95.8&95.8	3/4 LOAD EFF:	95.8	1/2 LOAD EFF:	95.4	GTD. EFF	ELEC. TYPE
FULL LOAD PF:	86&86	3/4 LOAD PF:	83.5	1/2 LOAD PF:	77	95	SQ CAGE IND RUN

F.L. TORQUE	LOCKED ROTOR AMPS	L.R. TORQUE	B.D. TORQUE	F.L. RISE°C
441 LB-FT	1085	885 LB-FT 201 %	1025 LB-FT 232 %	45

SOUND PRESSURE @ 3 FT.	SOUND POWER	ROTOR WK^2	MAX. WK^2	SAFE STALL TIME	STARTS / HOUR	APPROX. MOTOR WGT
- dBA	- dBA	0 LB-FT^2	- LB-FT^2	- SEC.	-	- LBS.

*** SUPPLEMENTAL INFORMATION ***

DE BRACKET TYPE	ODE BRACKET TYPE	MOUNT TYPE	ORIENTATION	SEVERE DUTY	HAZARDOUS LOCATION	DRIP COVER	SCREENS	PAINT
STANDARD	STANDARD	RIGID	HORIZONTAL	FALSE	NONE	FALSE	NONE	GRAY - LINCOLN

BEARINGS		GREASE	SHAFT TYPE	SPECIAL DE	SPECIAL ODE	SHAFT MATERIAL	FRAME MATERIAL
DE	ODE						
BALL	BALL	POLYREX EM	TS	NONE	NONE	1045 HOT ROLLED (C-204)	ROLLED STEEL
318	315						

THERMO-PROTECTORS				THERMISTORS	CONTROL	SPACE HEATERS
THERMOSTATS	PROTECTORS	WDG RTDs	BRG RTDs			
NONE	NOT	NONE	NONE	NONE	FALSE	NONE VOLTS

*

N

O

T

E

S

*

INVERTER TORQUE: NONE
INV. HP SPEED RANGE: NONE
ENCODER: NONE
NONE NONE
NONE NONE PPR
BRAKE: NONE NONE
NONE P/N NONE
NONE NONE
FT-LB V NONE Hz

Data Sheet

Date: 1/24/2018

LM32760



Data @ 460 V

Motor Load Data

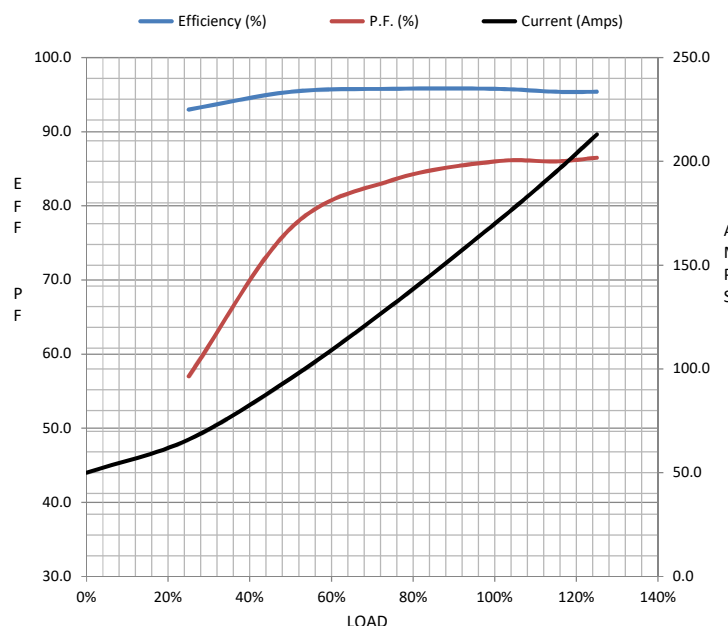
Load	0%	25%	50%	75%	100%	115%	125%	LR	
Current (Amps)	50.0	66.0	95.5	131	170	195	213	1,085	
Torque (ft-lb)	0.00	110	220	330	441	507	552	885	
RPM	1800	1797	1795	1790	1788	1,786	1784	0	
Efficiency (%)		93.0	95.4	95.8	95.8	95.4	95.4		
P.F. (%)	4.0	57.0	77.0	83.5	86.0	86.0	86.5	30.5	

Motor Speed Data

	LR	Pull-Up	BD	Rated	Idle
Speed (RPM)	0	900	1730	1788	1800
Current (Amps)	1,085	1,035	750	170	50.0
Torque (ft-lb)	885	800	1,025	441	0.00

Information Block

HP	150.0			
Sync. RPM	1800			
Frame	444			
Enclosure	DP			
Construction	TDR			
Voltage	460#380 V			
Frequency	60 Hz			
Design	A			
LR Code letter	G			
Service Factor	1.15			
Temp Rise @ FL	45 °C			
Duty	CONT			
Ambient	40 °C			
Elevation	1,000 feet			
Rotor/Shaft wk²	0.00 Lb-Ft²			
Ref Wdg	L4444012 NONE			
Sound Pressure @ 1M	999 dBA			
VFD Rating	NONE			
Outline Dwg	XK2D1SS2-2127			
Conn. Diag	A-EE7340-LN			
Additional Specifications:				
0				
0				
EQUIV CKT (OHMS / PHASE)				
R1	R2	X1	X2	Xm
0.0190	0.0110	0.1740	0.2060	5.2160



Speed - Torque Curve

