

PRODUCT INFORMATION PACKET



Model No: LM32755

Catalog No: LM32755

General Purpose Motor, 75 & 60 HP, 3 Ph, 60 & 50 Hz, 230/460 & 190/380 V, 1800 & 1500 RPM,
365TS Frame, DP



Regal and Leeson are trademarks of Regal Rexnord Corporation or one of its affiliated companies.

©2023 Regal Rexnord Corporation, All Rights Reserved. MC017097E



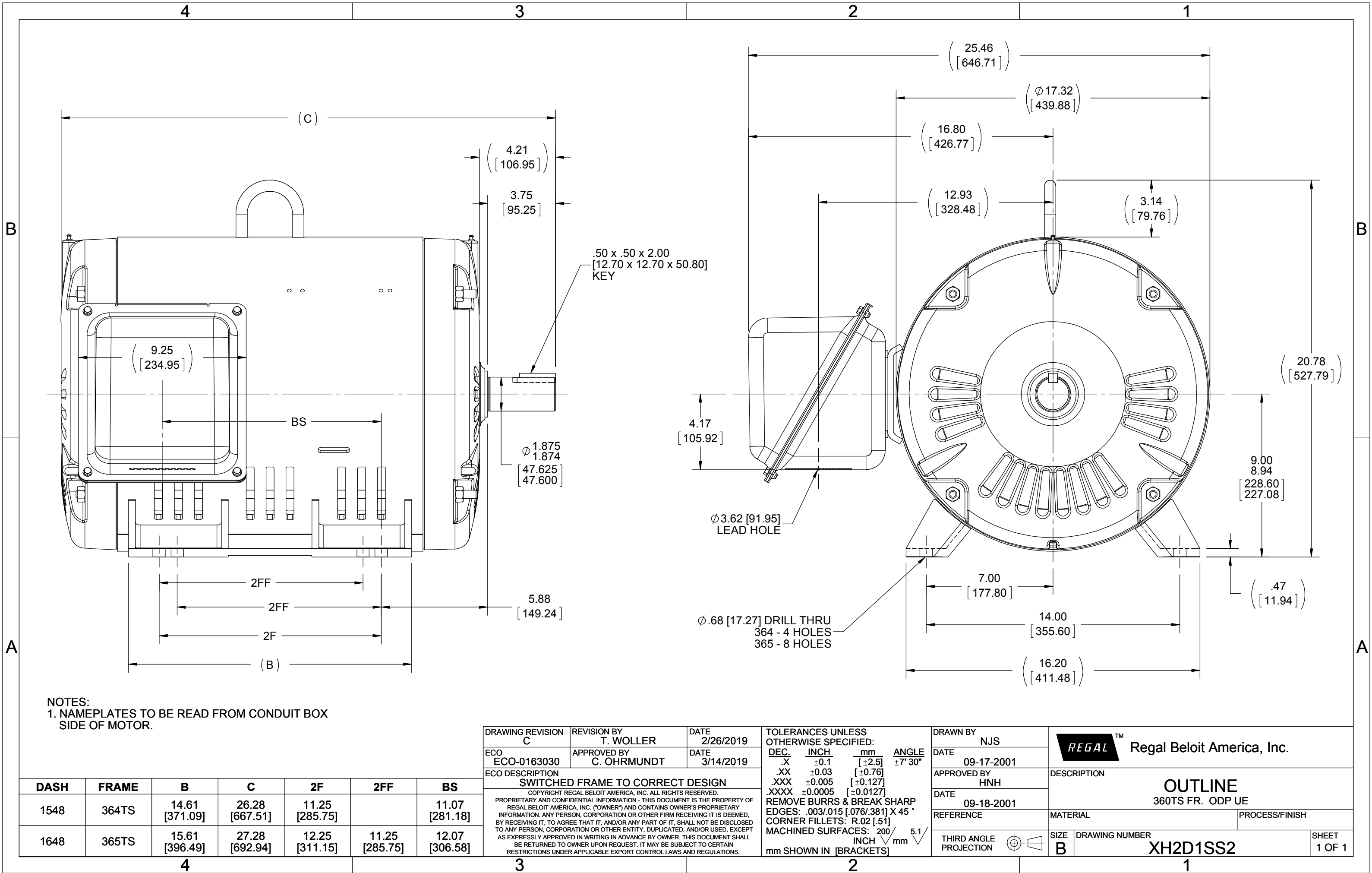


Nameplate Specifications

Phase	3	Output HP	75 & 60 Hp
Output KW	56.0 & 45.0 kW	Voltage	230/460 & 190/380 V
Speed	1782 & 1482 rpm	Service Factor	1.25 & 1.0
Frame	365TS	Enclosure	Drip Proof
Thermal Protection	No Protection	Efficiency	95 & 94.5 %
Ambient Temperature	40 °C	Frequency	60 & 50 Hz
Current	180/90 & 174/87 A	Power Factor	81.5
Duty	Continuous	Insulation Class	F
Design Code	B	KVA Code	G
Drive End Bearing Size	313	Opp Drive End Bearing Size	311
UL	Recognized	CSA	Y
CE	Y	IP Code	22
Number of Speeds	1		

Technical Specifications

Electrical Type	Squirrel Cage Induction Run	Starting Method	Wye Start Delta Run
Poles	4	Rotation	Reversible
Resistance Main	.065 Ohms	Mounting	Rigid Base
Motor Orientation	Horizontal	Drive End Bearing	Ball
Opp Drive End Bearing	Ball	Frame Material	Rolled Steel
Shaft Type	TS	Overall Length	29.45 in
Frame Length	16.48 in	Shaft Diameter	1.875 in
Shaft Extension	3.75 in	Assembly/Box Mounting	F1 Only
Connection Drawing	A-EE7308AA-LN	Outline Drawing	XH2D1SS2-1648



T12 _____
 T1 _____
 T6 _____ L1
 T7 _____

T2 _____
 T4 _____ L2
 T8 _____
 T10 _____

T3 _____
 T5 _____ L3
 T9 _____
 T11 _____

LOW VOLTAGE

T12 _____ L1
 T1 _____
 T4 _____
 T7 _____
 T2 _____ L2
 T10 _____

T5 _____
 T8 _____
 T3 _____ L3
 T11 _____

T6 _____
 T9 _____

HIGH VOLTAGE



VIEW OF TERMINAL END

					✓ UNLESS OTHERWISE SPECIFIED DIMENSIONS ARE IN INCHES TOL. ON XX±.02 XXX±.005 XXXX±.0005 ANGLES± 7°30"		
2	08-09-1999	RE-ISSUE, ADDED '-' TO PART NUMBER	BLR		MAX. SURFACE ROUGHNESS UNLESS OTHERWISE NOTED		DRAWN BY TRB 07-16-1999
1	06-18-1999	NEW DRAWING	TRB		FINISH		CHKD BY ML 06-18-1999
					MATERIAL		APPD BY GK 06-18-1999
REV	DATE	CHANGE	NAME	PART NAME 3 PHASE CONNECTION DIAGRAM 2/1 DELTA - 12 LEADS			DRWG NO A- EE7308AA-LN
					PURCHASED	CADD FILE NO.	EE7308AALN

ERROR: undefined
OFFENDING COMMAND: Pscrip
STACK:



1051 CHEYENNE AVE.
GRAFTON, WI 53024
PH. 262-277-8810

DATA VOLTS: 460

CERTIFICATION DATA SHEET

CONN. DIAGRAM: A-EE7308AA-LN

CAT #: LM32755

OUTLINE: XH2D1SS2-1648

WINDING: L3654019

NONE 1

TYPICAL MOTOR PERFORMANCE DATA

HP	KW	SYNC RPM	FL RPM	FRAME	ENCLOSURE	TYPE	KVA CODE	DESIGN
75	56	1800	1782	365TS	DP	TDR	G	BC

PH	HZ	VOLTS	AMPS	START TYPE	DUTY	INSL	S.F.	AMB	ELEV.
3	60/50	230/460#190/380	180/90&174/87	NYE START DELTA RUN	CONT	F	1.15	40	3300

F.L. EFF	95.0	3/4 LD EFF	95.0	1/2 LD EFF	94.5	GTD EFF		ELECT. TYPE	
F.L. PF	81.5	3/4 LD PF	77.5	1/2 LD PF	68.5	94.1		SQ CAGE IND RUN	

F.L. TORQUE	LR AMPS @ 460 V	L.R. TORQUE	B.D. TORQUE	F.L. RISE (° C)
221 LB-FT	542	525 LB-FT 238%	550 LB-FT 249%	45

PRESSURE @ 3	SOUND	POWER	ROTOR WK²	MAX. LOAD WK²	SAFE STALL TIME	STARTS/HOUR	MOTOR WGT
76 dBA	85 dBA		0.00 LB-FT²	0 LB-FT²	0 SEC.	0	0 LB.

*** SUPPLEMENTAL INFORMATION ***

DE BRACKET TYPE	ODE BRACKET TYPE	MOUNT TYPE	MOTOR ORIENTATION	SEVERE DUTY	HAZARDOUS LOCATION	DRIP COVER	SCREENS	PAINT
STANDARD	STANDARD	RIGID	HORIZONTAL	NO	NONE	NO	NONE	WATTSaver

BEARINGS	GREASE	SHAFT TYPE	SPECIAL DE	SPECIAL ODE	SHAFT MATERIAL	FRAME MATERIAL
DE ODE						
BALL BALL	POLYREX EM	TS	NONE	NONE	1045 HOT ROLLED (C-204)	ROLLED STEEL
313 311						

THERMOSTATS	PROTECTORS	WDG RTD's	BRG RTD's	THERMISTORS	CONTROL	SPACE HEATERS
NONE	NOT	NONE	NONE	NONE	FALSE	NA

R1 (ohms/ph)	R2 (ohms/ph)	X1 (ohms/ph)	X2 (ohms/ph)	Xm (ohms/ph)	VIBRATION (in/sec)	FLOAT
0.045	0.03	0.301	0.427	7.775	0.150	ODE

* N O T E S *			INVERTER TORQUE: NONE INV. HP SPEED RANGE: NONE ENCODER: NONE NONE NONE NONE PPR

DATE: 9/10/2018	BRAKE: NONE	
	NONE	NONE
	FT-LB: NA	
	VOLTAGE: NONE	HZ:
UL: V-INS, CONST UL REC		

Data Sheet

Date: 9/10/2018

LM32755



Data @ 460 V

Motor Load Data

Load	0%	25%	50%	75%	100%	115%	125%	LR	
Current (Amps)	34.5	41.0	54.0	71.0	90.0	103	111	542	
Torque (ft-lb)	0.00	55.0	110	165	221	255	277	525	
RPM	1800	1795	1790	1785	1782	1,778	1775	0	
Efficiency (%)		91.0	94.5	95.0	95.0	94.5	94.5		
P.F. (%)	4.0	47.0	68.5	77.5	81.5	82.5	83.5	35.0	

Motor Speed Data

	LR	Pull-Up	BD	Rated	Idle																													
Speed (RPM)	0	900	1650	1782	1800																													
Current (Amps)	542	475	350	90.0	34.5																													
Torque (ft-lb)	525	475	550	221	0.00																													
<div><div><div>— Efficiency (%)</div><div>— P.F. (%)</div><div>— Current (Amps)</div></div><table><caption>Graph Data Points (Estimated)</caption><thead><tr><th>Load (%)</th><th>Efficiency (%)</th><th>P.F. (%)</th><th>Current (Amps)</th></tr></thead><tbody><tr><td>25</td><td>91</td><td>45</td><td>34.5</td></tr><tr><td>50</td><td>94</td><td>70</td><td>47.5</td></tr><tr><td>75</td><td>95</td><td>78</td><td>90.0</td></tr><tr><td>100</td><td>95</td><td>82</td><td>542</td></tr><tr><td>125</td><td>94</td><td>83</td><td>-</td></tr></tbody></table></div>						Load (%)	Efficiency (%)	P.F. (%)	Current (Amps)	25	91	45	34.5	50	94	70	47.5	75	95	78	90.0	100	95	82	542	125	94	83	-					
						Load (%)	Efficiency (%)	P.F. (%)	Current (Amps)																									
						25	91	45	34.5																									
						50	94	70	47.5																									
						75	95	78	90.0																									
						100	95	82	542																									
						125	94	83	-																									
						HP		75.0																										
						Sync. RPM		1800																										
						Frame		365																										
						Enclosure		DP																										
						Construction		TDR																										
						Voltage		230/460#190/380		V																								
						Frequency		60		Hz																								
						Design		B																										
						LR Code letter		G																										
						Service Factor		1.15																										
Temp Rise @ FL		45		° C																														
Duty		CONT																																
Ambient		40		° C																														
Elevation		1,000		feet																														
Rotor/Shaft wk²		0.00		Lb-Ft²																														
Ref Wdg		L3654019 NONE																																
Sound Pressure @ 1M		76		dBA																														
VFD Rating		NONE																																
Outline Dwg		XH2D1SS2-1648																																
Conn. Diag		A-EE7308AA-LN																																
Additional Specifications:																																		
0																																		
0																																		
EQUIV CKT (OHMS / PHASE)																																		
R1		R2		X1		X2		Xm																										
0.0450		0.0300		0.3010		0.4270		7.7750																										

Speed - Torque Curve

