

PRODUCT INFORMATION PACKET



Model No: LM32753

Catalog No: LM32753

General Purpose Motor, 60 & 50 HP, 3 Ph, 60 & 50 Hz, 230/460 & 190/380 V, 1800 & 1500 RPM,
364TS Frame, DP



Regal and Leeson are trademarks of Regal Rexnord Corporation or one of its affiliated companies.

©2023 Regal Rexnord Corporation, All Rights Reserved. MC017097E



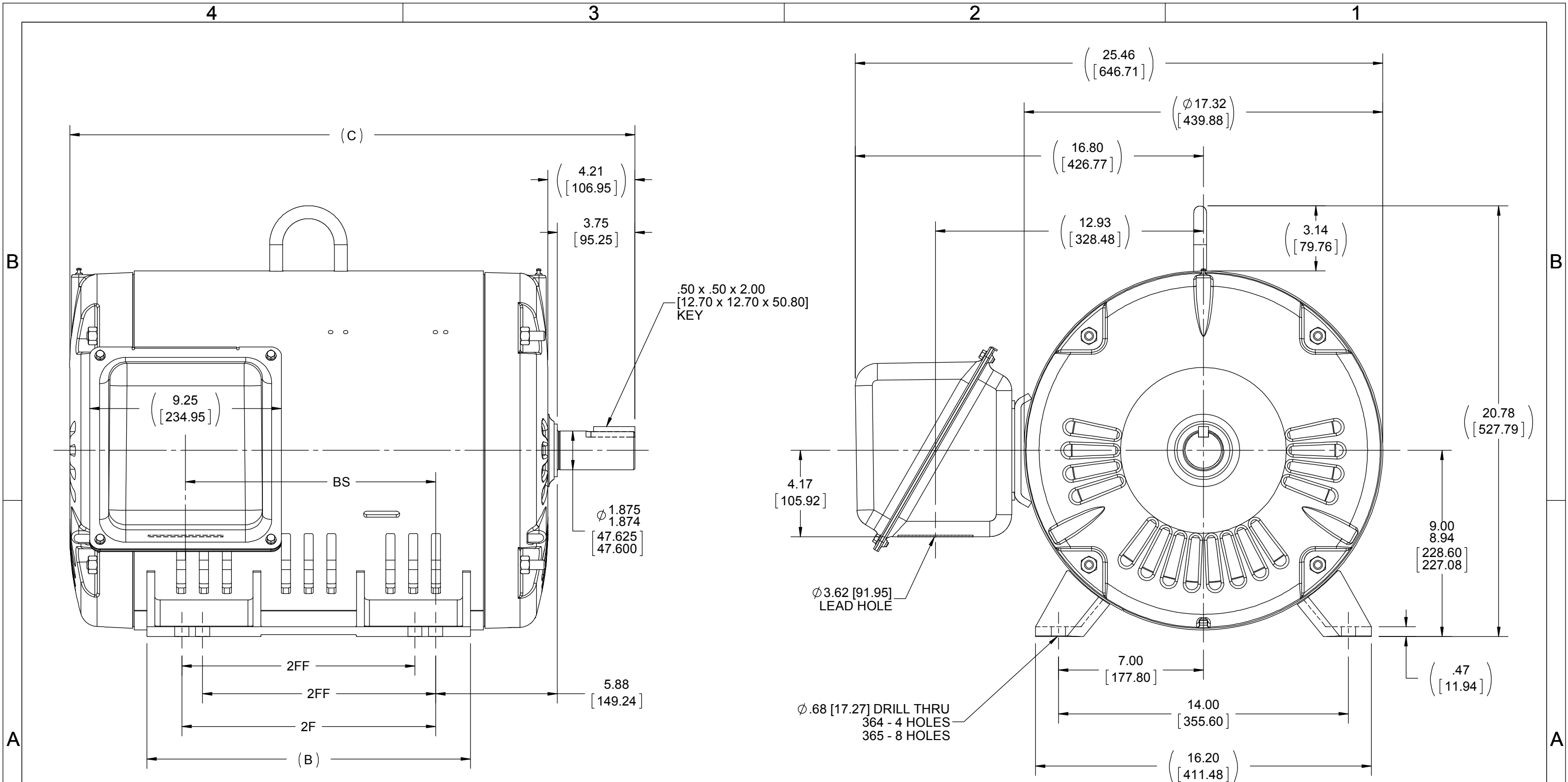


Nameplate Specifications

Phase	3	Output HP	60 & 50 Hp
Output KW	45.0 & 37.0 kW	Voltage	230/460 & 190/380 V
Speed	1785 & 1483 rpm	Service Factor	1.25 & 1.0
Frame	364TS	Enclosure	Drip Proof
Thermal Protection	No Protection	Efficiency	95 & 95 %
Ambient Temperature	40 °C	Frequency	60 & 50 Hz
Current	140/70 & 140/70 A	Power Factor	84
Duty	Continuous	Insulation Class	F
Design Code	B	KVA Code	G
Drive End Bearing Size	313	Opp Drive End Bearing Size	311
UL	Recognized	CSA	Y
CE	Y	IP Code	22
Number of Speeds	1		


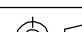
Technical Specifications

Electrical Type	Squirrel Cage Induction Run	Starting Method	Wye Start Delta Run
Poles	4	Rotation	Reversible
Resistance Main	.068 Ohms	Mounting	Rigid Base
Motor Orientation	Horizontal	Drive End Bearing	Ball
Opp Drive End Bearing	Ball	Frame Material	Rolled Steel
Shaft Type	TS	Overall Length	28.45 in
Frame Length	15.48 in	Shaft Diameter	1.875 in
Shaft Extension	3.75 in	Assembly/Box Mounting	F1 Only
Connection Drawing	A-EE7308AA-LN	Outline Drawing	XH2D1SS2-1548



NOTES:
1. NAMEPLATES TO BE READ FROM CONDUIT BOX
SIDE OF MOTOR.

DASH	FRAME	B	C	2F	2FF	BS
1548	364TS	14.61 [371.09]	26.28 [667.51]	11.25 [285.75]		11.07 [281.18]
1648	365TS	15.61 [396.49]	27.28 [692.94]	12.25 [311.15]	11.25 [285.75]	12.07 [306.58]

DRAWING REVISION C		REVISION BY T. WOLLER		DATE 2/26/2019		TOLERANCES UNLESS OTHERWISE SPECIFIED: DEC. INCH mm ANGLE .X \pm 0.1 [\pm 2.5] .XX \pm 0.03 [\pm 0.76] .XXX \pm 0.005 [\pm 0.127] .XXXX \pm 0.0005 [\pm 0.0127] REMOVE BURRS & BREAK SHARP EDGES: .003/.015 [.076/.381] X 45 ° CORNER FILLETS: R.02 [.51] MACHINED SURFACES: 200 INCH mm 5.1 mm SHOWN IN [BRACKETS]				DRAWN BY NJS		 Regal Beloit America, Inc.			
ECO ECO-0163030		APPROVED BY C. OHRMUNDT		DATE 3/14/2019						DATE 09-17-2001					
ECO DESCRIPTION SWITCHED FRAME TO CORRECT DESIGN COPYRIGHT REGAL BELOIT AMERICA, INC. ALL RIGHTS RESERVED. PROPRIETARY AND CONFIDENTIAL INFORMATION - THIS DOCUMENT IS THE PROPERTY OF REGAL BELOIT AMERICA, INC. ("OWNER") AND CONTAINS OWNER'S PROPRIETARY INFORMATION. ANY PERSON, CORPORATION OR OTHER FIRM RECEIVING IT IS DEEMED, BY RECEIVING IT, TO AGREE THAT IT, AND/OR ANY PART OF IT, SHALL NOT BE DISCLOSED TO ANY PERSON, CORPORATION OR OTHER ENTITY, DUPLICATED, AND/OR USED, EXCEPT AS EXPRESSLY APPROVED IN WRITING IN ADVANCE BY OWNER. THIS DOCUMENT SHALL BE RETURNED TO OWNER UPON REQUEST. IT MAY BE SUBJECT TO CERTAIN RESTRICTIONS UNDER APPLICABLE EXPORT CONTROL LAWS AND REGULATIONS.						APPROVED BY HNH		DESCRIPTION OUTLINE 360TS FR. ODP UE							
						DATE 09-18-2001									
						REFERENCE		MATERIAL				PROCESS/FINISH			
						THIRD ANGLE PROJECTION				SIZE B		DRAWING NUMBER XH2D1SS2			

T12 _____
 T1 _____
 T6 _____ L1
 T7 _____

T2 _____
 T4 _____
 T8 _____ L2
 T10 _____

T3 _____
 T5 _____
 T9 _____ L3
 T11 _____

LOW VOLTAGE

T12 _____ L1
 T1 _____

T4 _____
 T7 _____

T2 _____ L2
 T10 _____

T5 _____
 T8 _____

T3 _____ L3
 T11 _____

T6 _____
 T9 _____

HIGH VOLTAGE



VIEW OF TERMINAL END

					✓ UNLESS OTHERWISE SPECIFIED DIMENSIONS ARE IN INCHES TOL. ON XX±.02 XXX±.005 XXXX±.0005 ANGLES± 7°30"		
2	08-09-1999	RE-ISSUE, ADDED '-' TO PART NUMBER	BLR		MAX. SURFACE ROUGHNESS UNLESS OTHERWISE NOTED		DRAWN BY TRB 07-16-1999
					FINISH		CHKD BY ML 06-18-1999
1	06-18-1999	NEW DRAWING	TRB		MATERIAL		APPD BY GK 06-18-1999
REV	DATE	CHANGE	NAME	PART NAME 3 PHASE CONNECTION DIAGRAM 2/1 DELTA - 12 LEADS			DRWG NO A- EE7308AA-LN
				PURCHASED	CADD FILE NO.	EE7308AALN	

ERROR: undefined
OFFENDING COMMAND: Pscrip
STACK:



1051 CHEYENNE AVE.
GRAFTON, WI 53024
PH. 262-277-8810

DATA VOLTS: 460

CERTIFICATION DATA SHEET

CONN. DIAGRAM: A-EE7308AA-LN

CAT #: LM32753

OUTLINE: XH2D1SS2-1548

WINDING: L3644011

NONE 1

TYPICAL MOTOR PERFORMANCE DATA

HP	KW	SYNC RPM	FL RPM	FRAME	ENCLOSURE	TYPE	KVA CODE	DESIGN
60	45	1800	1785	364TS	DP	TDR	G	B

PH	HZ	VOLTS	AMPS	START TYPE	DUTY	INSL	S.F.	AMB	ELEV.
3	60/50	230/460#190/380	140/70&140/70	NYE START DELTA RUN	CONT	F	1.15	40	3300

F.L. EFF	95.0	3/4 LD EFF	94.5	1/2 LD EFF	93.6	GTD EFF	ELECT. TYPE
F.L. PF	84.0	3/4 LD PF	81.0	1/2 LD PF	73.5	94.1	SQ CAGE IND RUN

F.L. TORQUE	LR AMPS @ 460 V	L.R. TORQUE	B.D. TORQUE	F.L. RISE (° C)
177 LB-FT	435	330 LB-FT 186%	450 LB-FT 254%	30

PRESSURE @ 3	SOUND	POWER	ROTOR WK²	MAX. LOAD WK²	SAFE STALL TIME	STARTS/HOUR	MOTOR WGT
76 dBA	85 dBA		0.00 LB-FT²	0 LB-FT²	0 SEC.	0	0 LB.

*** SUPPLEMENTAL INFORMATION ***

DE BRACKET TYPE	ODE BRACKET TYPE	MOUNT TYPE	MOTOR ORIENTATION	SEVERE DUTY	HAZARDOUS LOCATION	DRIP COVER	SCREENS	PAINT
STANDARD	STANDARD	RIGID	HORIZONTAL	NO	NONE	NO	NONE	WATTSaver

BEARINGS	GREASE	SHAFT TYPE	SPECIAL DE	SPECIAL ODE	SHAFT MATERIAL	FRAME MATERIAL
DE ODE						
BALL BALL						
313 311	POLYREX EM	TS	NONE	NONE	1045 HOT ROLLED (C-204)	ROLLED STEEL

THERMOSTATS	PROTECTORS	WDG RTD's	BRG RTD's	THERMISTORS	CONTROL	SPACE HEATERS
NONE	NOT	NONE	NONE	NONE	FALSE	NA

R1 (ohms/ph)	R2 (ohms/ph)	X1 (ohms/ph)	X2 (ohms/ph)	Xm (ohms/ph)	VIBRATION (in/sec)	FLOAT
0.047	0.033	0.341	0.534	9.602	0.150	ODE

* N O T E S *			INVERTER TORQUE: NONE INV. HP SPEED RANGE: NONE ENCODER: NONE NONE NONE NONE PPR
DATE: 9/10/2018			BRAKE: NONE NONE NONE FT-LB: NA VOLTAGE: NONE HZ: UL: V-INS, CONST UL REC

Data Sheet

Date: 9/10/2018

LM32753



Data @ 460 V

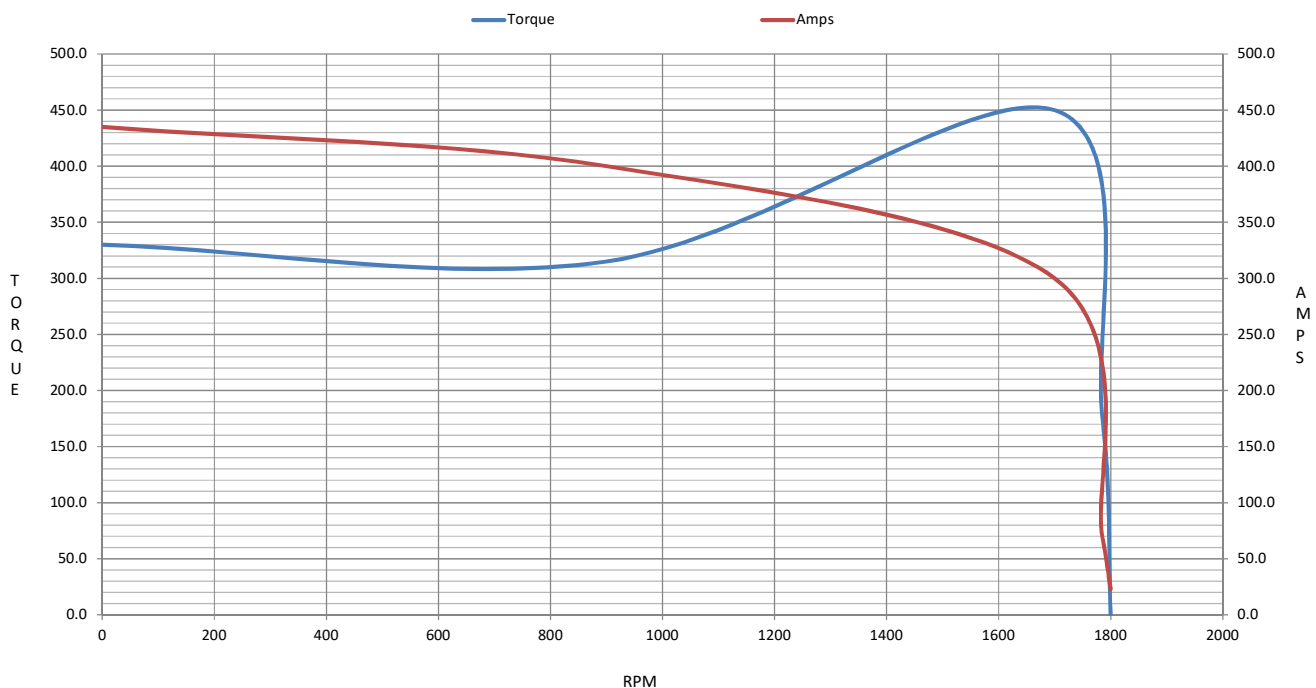
Motor Load Data

Load	0%	25%	50%	75%	100%	115%	125%	LR	
Current (Amps)	23.0	29.0	40.0	54.0	70.0	79.0	86.0	435	
Torque (ft-lb)	0.00	44.0	88.0	132	177	203	221	330	
RPM	1800	1795	1792	1788	1785	1,782	1780	0	
Efficiency (%)		89.5	93.6	94.5	95.0	95.0	94.5		
P.F. (%)	5.0	53.0	73.5	81.0	84.0	84.5	85.0	28.0	

Motor Speed Data

	LR	Pull-Up	BD	Rated	Idle	Information Block	
Speed (RPM)	0	900	1700	1785	1800	HP	60.0
Current (Amps)	435	400	300	70.0	23.0	Sync. RPM	1800
Torque (ft-lb)	330	315	450	177	0.00	Frame	364
						Enclosure	DP
						Construction	TDR
						Voltage	230/460#190/380 V
						Frequency	60 Hz
						Design	A
						LR Code letter	G
						Service Factor	1.15
						Temp Rise @ FL	30 ° C
						Duty	CONT
						Ambient	40 ° C
						Elevation	1,000 feet
						Rotor/Shaft wk ²	0.00 Lb-Ft ²
						Ref Wdg	L3644011 NONE
						Sound Pressure @ 1M	76 dBA
						VFD Rating	NONE
						Outline Dwg	XH2D1SS2-1548
						Conn. Diag	A-EE7308AA-LN
Additional Specifications:						0	
						0	
						EQUIV CKT (OHMS / PHASE)	
						R1	R2
						X1	X2
						Xm	
						0.0470	0.0330
						0.3410	0.5340
						9.6020	

Speed - Torque Curve



EC Declaration of Conformity

The undersigned representing
the manufacturer:

Regal Beloit America
100 East Randolph St.
Wausau, WI 54401

and the authorized representative
established within the Community:

Marathon Electric UK
6F Thistleton Road Ind. Estate
Market Overton
Oakham, Rutland LE15 7PP UK

are committed to providing customers with products that comply with applicable regulations and international protocols to which they are subject, including the requirements of the European Parliament Directive on the Harmonization of the laws relating to electrical equipment designed for use within certain voltage limits (2014/35/EU).

Regal Beloit America declares that the following product(s), to which this declaration relates, are in conformity with the relevant sections of the EC standards listed below.

This statement supersedes any statements previously issued pertaining to the product(s) listed below and is subject to change without notice.

Model No : LM32753

(Model No. may contain prefix and/or suffix characters)

Catalog No : LM32753

Rework No : N/A

Directives :

Low Voltage Directive 2014/35/EU

Harmonized Standards Used :

EN 60034-1: 2010 (IEC 60034-1: 2010)

EN 60034-5: 2001/A1:2007 (IEC 60034-5: 2000/A1:2006)

Authorized Representative:



Michael A. Logsdon
Vice President, Technology

Authorized Representative in the Community:



Julian Clark
Marketing Engineer

Created on 11/23/2022

CE 22