

# PRODUCT INFORMATION PACKET



Model No: LM32674

Catalog No: LM32674

General Purpose Motor, 50 & 40 HP, 3 Ph, 60 & 50 Hz, 230/460 & 190/380 V, 1800 & 1500 RPM,  
326TS Frame, DP



Regal and Leeson are trademarks of Regal Rexnord Corporation or one of its affiliated companies.

©2023 Regal Rexnord Corporation, All Rights Reserved. MC017097E



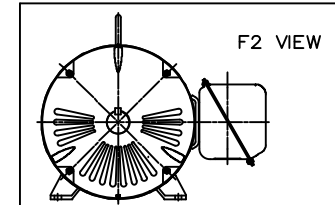
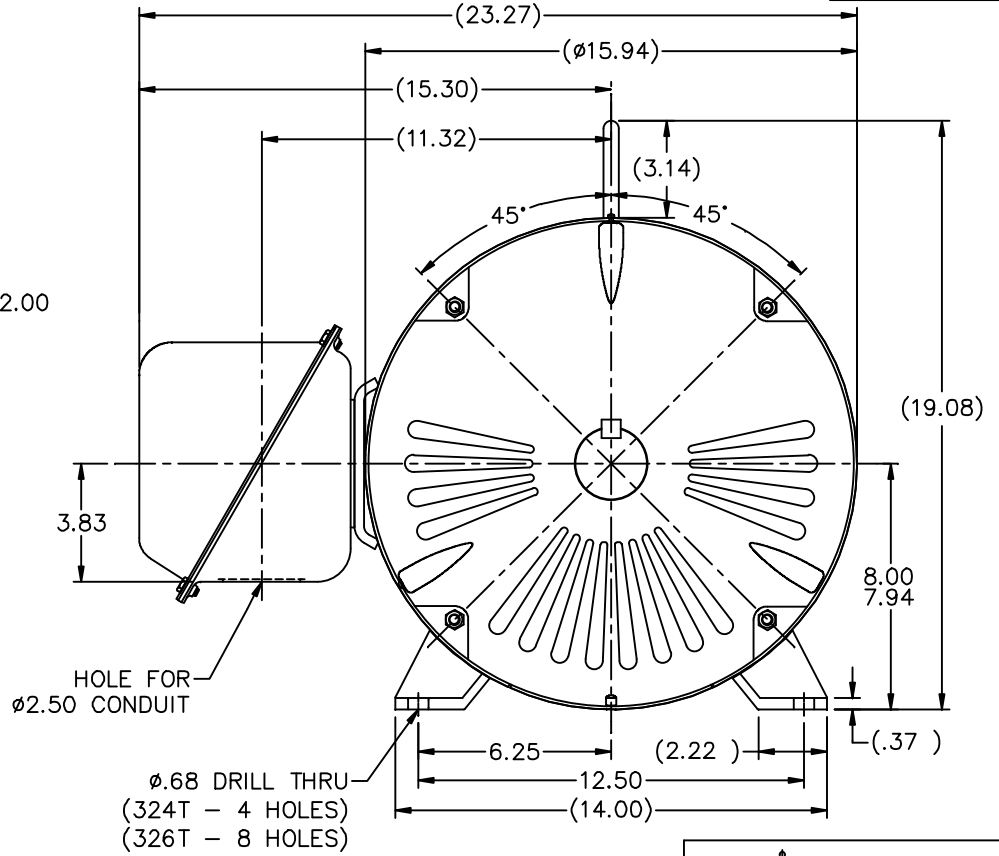
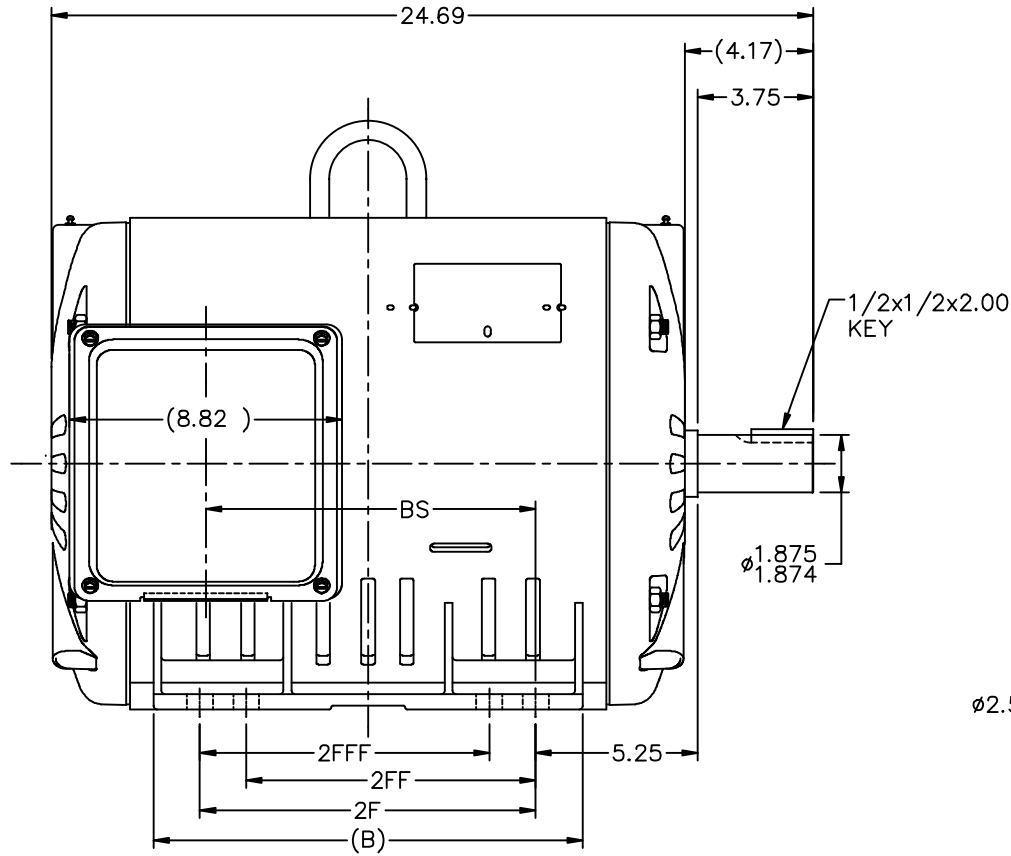


## Nameplate Specifications

Phase	3	Output HP	50 & 40 Hp
Output KW	37.0 & 30.0 kW	Voltage	230/460 & 190/380 V
Speed	1782 & 1484 rpm	Service Factor	1.25 & 1.0
Frame	326TS	Enclosure	Drip Proof
Thermal Protection	No Protection	Efficiency	94.5 & 94.1 %
Ambient Temperature	40 °C	Frequency	60 & 50 Hz
Current	131/65.5 & 124/62 A	Power Factor	75.5
Duty	Continuous	Insulation Class	F
Design Code	B	KVA Code	F
Drive End Bearing Size	311	Opp Drive End Bearing Size	309
UL	Recognized	CSA	Y
CE	Y	IP Code	22
Number of Speeds	1		

## Technical Specifications

Electrical Type	Squirrel Cage Induction Run	Starting Method	Wye Start Delta Run
Poles	4	Rotation	Reversible
Resistance Main	.105 Ohms	Mounting	Rigid Base
Motor Orientation	Horizontal	Drive End Bearing	Ball
Opp Drive End Bearing	Ball	Frame Material	Rolled Steel
Shaft Type	TS	Overall Length	25.82 in
Frame Length	16.57 in	Shaft Diameter	1.875 in
Shaft Extension	3.75 in	Assembly/Box Mounting	F1 ONLY
Outline Drawing	XG2D1SS2-1657	Connection Drawing	A-EE7308AA-LN



NOTES:  
1. CONDUIT BOX CAN BE ROTATED IN 90° STEPS.  
2. NAMEPLATES TO BE READ FROM CONDUIT BOX SIDE OF MOTOR.

DASH	FRAME	C	B	2F	2FF	2FFF	BS
1507	324TS	24.32	13.52	10.50			10.51
1657	326TS	25.82	15.02	12.00	10.50	10.50	12.01

				TOLERANCES UNLESS SPECIFIED		Lincoln Motors	DRAWN CTO 08-21-2002			
				DEC.	INCHES		CHK	ML	08-23-2002	
				.X	±.1		APPD	HNH	08-23-2002	
				.XX	±.03				SCALE	1=4
2	ADDED TS IN TABLE	KS	1-5-2012	TB	.XXX	±.005	TITLE OUTLINE NEMA MOTOR			
1	NEW DRAWING	MU42994	CTO 08-23-2002	HNH	.XXXX	±.0005	320TS ODP UE			
NO.	REVISION	BY & DATE	CHK	ANG	FINISH		MATT'L			
							PREV			
THIS DRAWING IN DESIGN AND DETAIL IS OUR PROPERTY AND MUST NOT BE USED EXCEPT IN CONNECTION WITH OUR WORK ALL RIGHTS OF DESIGN AND INVENTION ARE RESERVED THIS IS AN ELECTRONICALLY GENERATED DOCUMENT - DO NOT SCALE THIS PRINT						RFP	CAD FILE xg2d1ss2		SIZE	DRAWING NO. PAGE OF REV.
						DIST WA			B	XG2D1SS2 2

T12 \_\_\_\_\_  
 T1 \_\_\_\_\_  
 T6 \_\_\_\_\_ L1  
 T7 \_\_\_\_\_

T2 \_\_\_\_\_  
 T4 \_\_\_\_\_  
 T8 \_\_\_\_\_ L2  
 T10 \_\_\_\_\_

T3 \_\_\_\_\_  
 T5 \_\_\_\_\_  
 T9 \_\_\_\_\_ L3  
 T11 \_\_\_\_\_

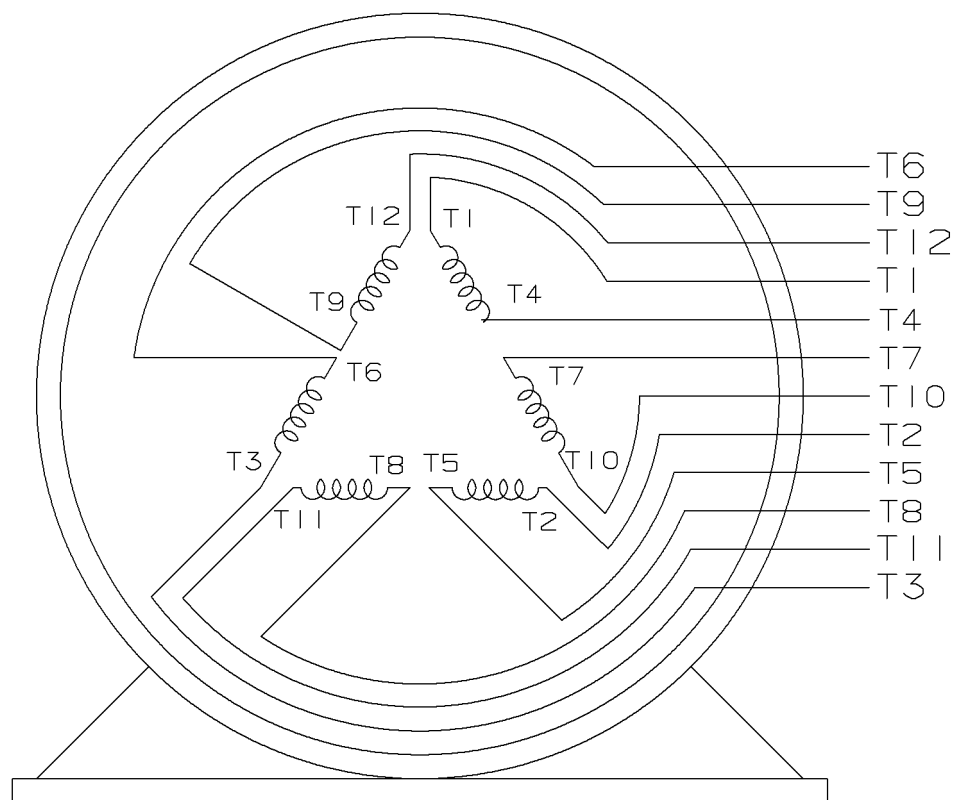
LOW VOLTAGE

T12 \_\_\_\_\_ L1  
 T1 \_\_\_\_\_  
 T4 \_\_\_\_\_  
 T7 \_\_\_\_\_  
 T2 \_\_\_\_\_  
 T10 \_\_\_\_\_ L2

T5 \_\_\_\_\_  
 T8 \_\_\_\_\_  
 T3 \_\_\_\_\_ L3  
 T11 \_\_\_\_\_

T6 \_\_\_\_\_  
 T9 \_\_\_\_\_

HIGH VOLTAGE



VIEW OF TERMINAL END

					✓ UNLESS OTHERWISE SPECIFIED DIMENSIONS ARE IN INCHES TOL. ON XX±.02 XXX±.005 XXXX±.0005 ANGLES± 7°30"		
2	08-09-1999	RE-ISSUE, ADDED '-' TO PART NUMBER	BLR		MAX. SURFACE ROUGHNESS UNLESS OTHERWISE NOTED		DRAWN BY TRB 07-16-1999
1	06-18-1999	NEW DRAWING	TRB		FINISH		CHKD BY ML 06-18-1999
					MATERIAL		APPD BY GK 06-18-1999
REV	DATE	CHANGE	NAME	PART NAME 3 PHASE CONNECTION DIAGRAM 2/1 DELTA - 12 LEADS			DRWG NO A- EE7308AA-LN
					PURCHASED	CADD FILE NO.	EE7308AALN

ERROR: undefined  
OFFENDING COMMAND: Pscrip  
  
STACK:



**2100 WASHINGTON ST.  
GRAFTON, WI  
PH. 262-277-8810**

**CONN. DIAGRAM:** A-EE7308AA-LN

**OUTLINE:** XG2D1SS2-1657

**CATALOG #:** LM32674

**WINDING #:** L3264039 1

**MOUNTING:** F1 ONLY

**TYPICAL MOTOR PERFORMANCE DATA**

HP	kW	SYNC. RPM	F.L. RPM	FRAME	ENCLOSURE	KVA CODE	DESIGN
50&40	37.0&30.0	1800	1782&1484	326TS	DP	F	B

PH	Hz	VOLTS	AMPS	START TYPE	DUTY	INSL	S.F.	AMB°C
3	60/50	230/460&190/380	131/65.5&124/62	WYE START DELTA RUN	CONTINUOUS	F1	1.25/1.0	40

<b>FULL LOAD EFF:</b>	94.5&94.1	<b>3/4 LOAD EFF:</b>	94.5	<b>1/2 LOAD EFF:</b>	94.1	<b>GTD. EFF</b>		<b>ELEC. TYPE</b>
<b>FULL LOAD PF:</b>	75.5&78.5	<b>3/4 LOAD PF:</b>	70.5	<b>1/2 LOAD PF:</b>	60	93.6		SQ CAGE IND RUN

F.L. TORQUE	LOCKED ROTOR AMPS	L.R. TORQUE	B.D. TORQUE	F.L. RISE°C
147 LB-FT	650 / 325	300 LB-FT 204 %	325 LB-FT 221 %	45

SOUND PRESSURE @ 3 FT.	SOUND POWER	ROTOR WK^2	MAX. WK^2	SAFE STALL TIME	STARTS / HOUR	APPROX. MOTOR WGT
75 dBA	85 dBA	9 LB-FT^2	- LB-FT^2	- SEC.	-	- LBS.

**\*\*\* SUPPLEMENTAL INFORMATION \*\*\***

DE BRACKET TYPE	ODE BRACKET TYPE	MOUNT TYPE	ORIENTATION	SEVERE DUTY	HAZARDOUS LOCATION	DRIP COVER	SCREENS	PAINT
STANDARD	STANDARD	RIGID	HORIZONTAL	FALSE	NONE	FALSE	NONE	GRAY - LINCOLN

BEARINGS		GREASE	SHAFT TYPE	SPECIAL DE	SPECIAL ODE	SHAFT MATERIAL	FRAME MATERIAL
DE	ODE						
BALL	BALL						
311	309	POLYREX EM	TS	NONE	NONE	1045 HOT ROLLED (C-204)	ROLLED STEEL

THERMO-PROTECTORS				THERMISTORS	CONTROL	SPACE HEATERS
THERMOSTATS	PROTECTORS	WDG RTDs	BRG RTDs			
NONE	NOT	NONE	NONE	NONE	FALSE	NONE VOLTS

\*  
N  
O  
T  
E  
S  
\*

**INVERTER TORQUE:** NONE  
**INV. HP SPEED RANGE:** NONE

**ENCODER:** NONE  
NONE NONE  
NONE NONE PPR

**BRAKE:** NONE NONE  
NONE P/N NONE  
NONE NONE  
FT-LB V NONE Hz

## Data Sheet

Date: 1/19/2018

LM32674



Data @ 460 V

## Motor Load Data

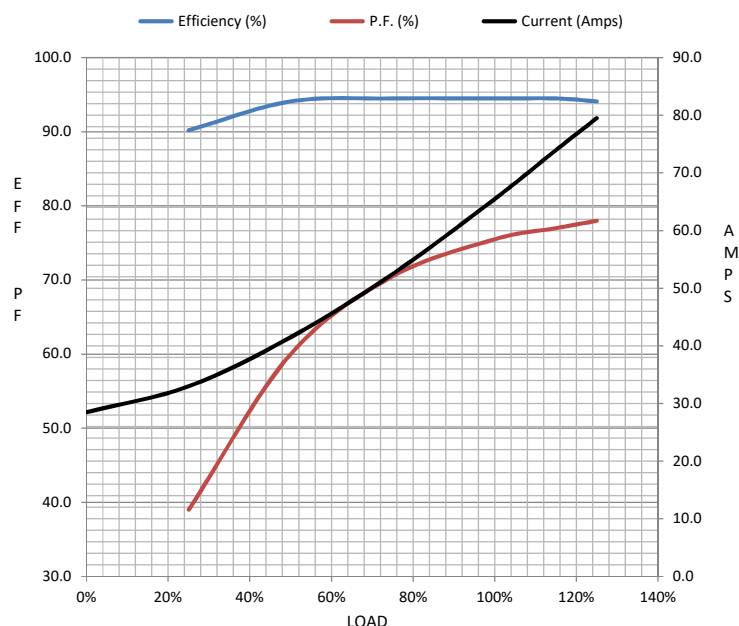
Load	0%	25%	50%	75%	100%	115%	125%	LR	
Current (Amps)	28.5	33.0	41.5	52.5	65.5	74.0	79.5	325	
Torque (ft-lb)	0.00	36.5	73.5	110	147	170	185	300	
RPM	1800	1795	1792	1787	1782	1780	1777	0	
Efficiency (%)		90.2	94.1	94.5	94.5	94.5	94.1		
P.F. (%)	3.5	39.0	60.0	70.5	75.5	77.0	78.0	34.0	

## Motor Speed Data

	LR	Pull-Up	BD	Rated	Idle
Speed (RPM)	0	900	1700	1782	1800
Current (Amps)	325	290	210	65.5	28.5
Torque (ft-lb)	300	275	325	147	0.00

## Information Block

HP	50.0			
Sync. RPM	1800			
Frame	326			
Enclosure	DP			
Construction	TDR			
Voltage	230/460#190/380 V			
Frequency	60 Hz			
Design	B			
LR Code letter	F			
Service Factor	1.15			
Temp Rise @ FL	45 °C			
Duty	CONT			
Ambient	40 °C			
Elevation	1,000 feet			
Rotor/Shaft wk²	9.0 Lb-Ft²			
Ref Wdg	L3264039 NONE			
Sound Pressure @ 1M	75 dBA			
VFD Rating	NONE			
Outline Dwg	XG2D1SS2-1657			
Conn. Diag	A-EE7308AA-LN			
Additional Specifications:				
0				
0				
EQUIV CKT (OHMS / PHASE)				
R1	R2	X1	X2	Xm
0.0740	0.0450	0.4200	0.7430	9.1850



## Speed - Torque Curve

