

PRODUCT INFORMATION PACKET



Model No: LM32301
Catalog No: LM32301
100HP..1782RPM.404T.DP.460V.3PH.60HZ.CONT.....

Regal and Leeson are trademarks of Regal Rexnord Corporation or one of its affiliated companies.
©2023 Regal Rexnord Corporation, All Rights Reserved. MC017097E





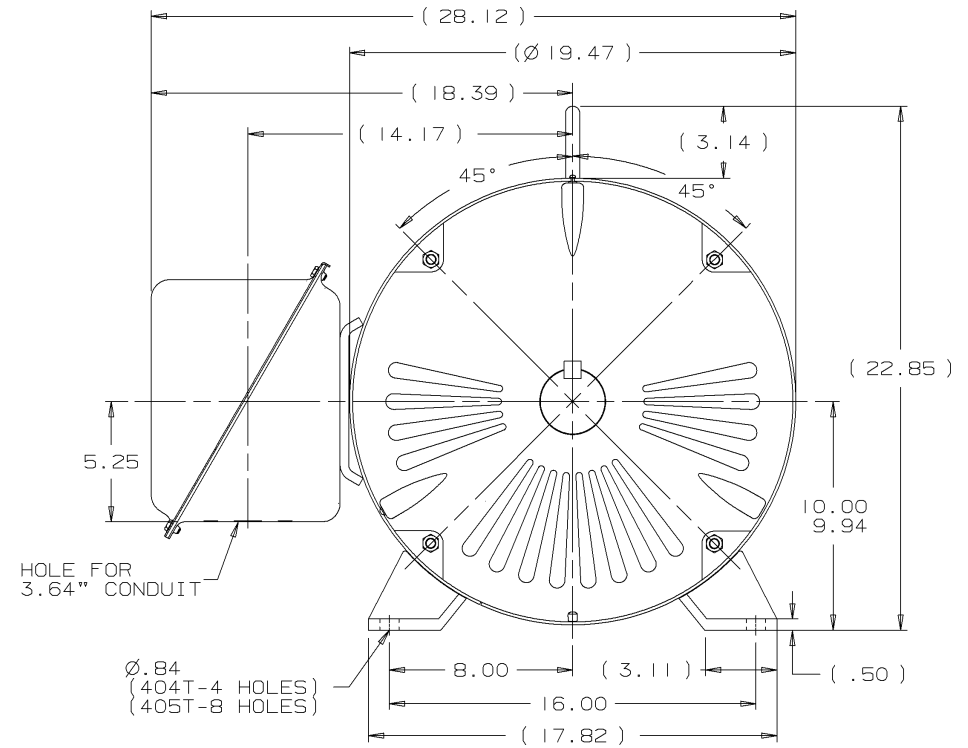
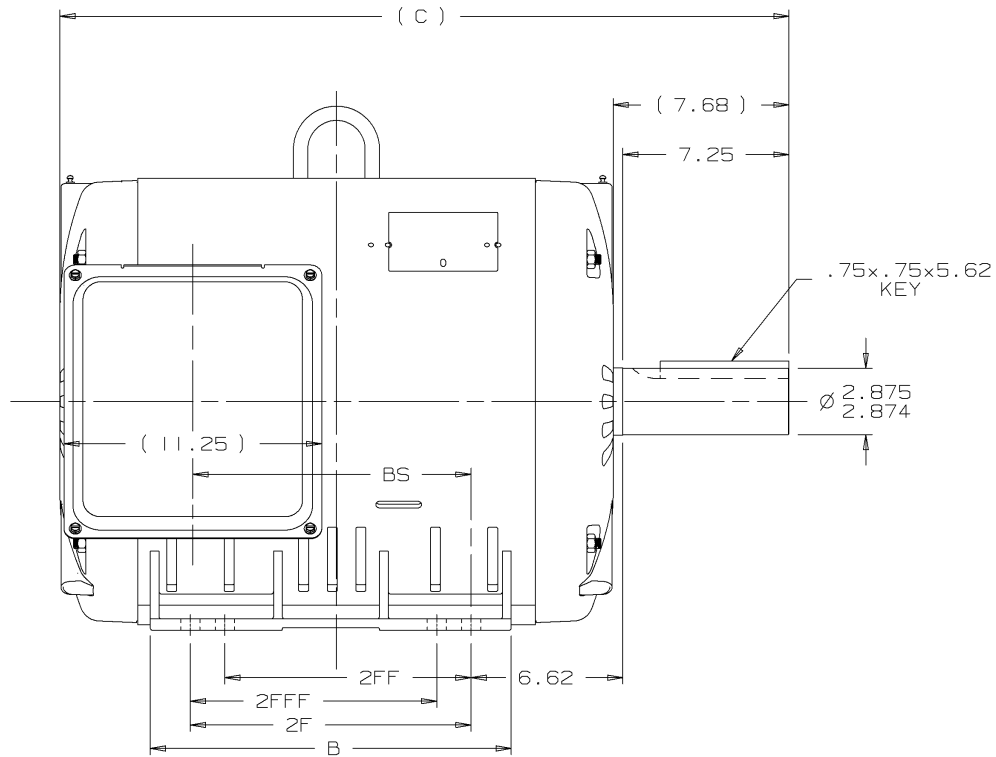
Nameplate Specifications

Phase	3	Output HP	100 & 75 Hp
Output KW	75.0 & 56.0 kW	Voltage	460 & 380 V
Speed	1784 & 1484 rpm	Service Factor	1.25 & 1.15
Frame	404T	Enclosure	Drip Proof
Thermal Protection	No Protection	Efficiency	94.1 & 94.5 %
Ambient Temperature	40 °C	Frequency	60 & 50 Hz
Current	120 & 100 A	Power Factor	81
Duty	Continuous	Insulation Class	F
Design Code	B	KVA Code	F
Drive End Bearing Size	315	Opp Drive End Bearing Size	313
UL	Recognized	CSA	Y
CE	Y	IP Code	22
Number of Speeds	1		

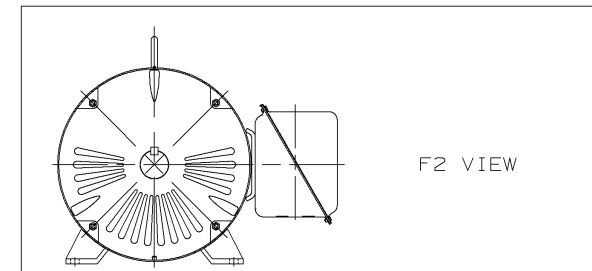
Technical Specifications

Electrical Type	Squirrel Cage Induction Run	Starting Method	Part Wdg Start
Poles	4	Rotation	Reversible
Resistance Main	.07 Ohms	Mounting	Rigid Base
Motor Orientation	Horizontal	Drive End Bearing	Ball
Opp Drive End Bearing	Ball	Frame Material	Rolled Steel
Shaft Type	T	Assembly/Box Mounting	F1 ONLY
Outline Drawing	XJ2D1SS1-1735	Connection Drawing	A-EE7341C-LN

This is an uncontrolled document once printed or downloaded and is subject to change without notice. Date Created:06/22/2023



- NOTES:
 1. CONDUIT BOX CAN BE ROTATED IN 90° STEPS.
 2. NAMEPLATES TO BE READ FROM CONDUIT BOX SIDE OF MOTOR.



DASH	FRAME	C	B	2F	2FF	2FFF	BS	REV	DATE	CHANGE	NAME	PART NAME	OUTLINE	NEMA MOTORS	DRWG NO
1735	404	31.81	15.75	12.25			12.14	I	08-31-2001	NEW DRAWING	TJB	400T ODP UE			XJ2DISSI
1885	405	33.31	17.25	13.75	10.75	10.75	13.64								
								REV	DATE	CHANGE	NAME	DISTRIBUTION W - W - W - BY CADD FILE NO. XJ2DISSI			



UNLESS OTHERWISE SPECIFIED DIMENSIONS ARE IN INCHES TOL. ON XX±.02 XXX±.005 XXXX±.0005 ANGLES± 7'30"			
MAX. SURFACE ROUGHNESS UNLESS OTHERWISE NOTED	DRAWN BY TJB		08-21-2001
FINISH	CHKD BY ML		08-23-2001
MATERIAL	APPD BY HNH		08-29-2001

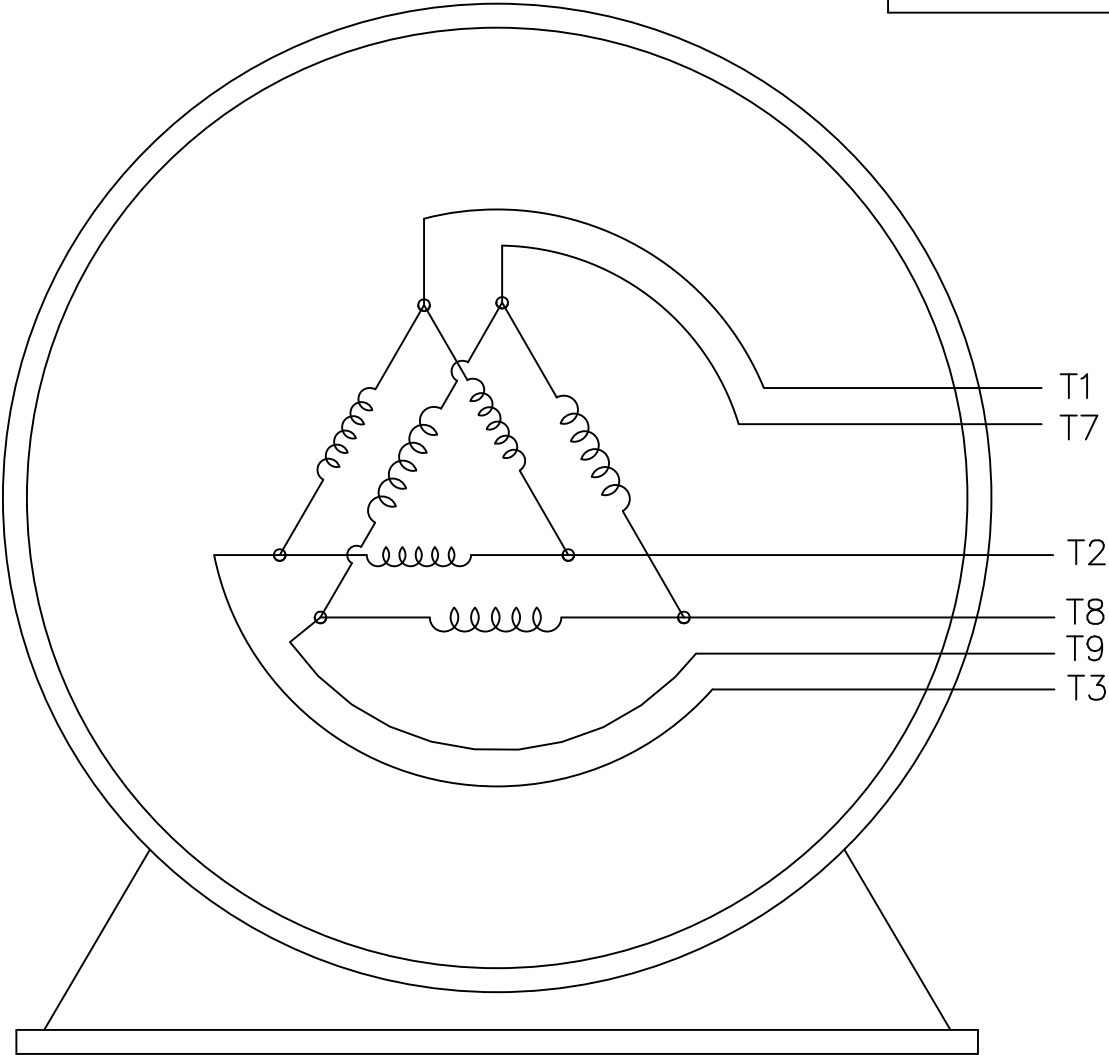
THREE PHASE – PART WINDING START
 DELTA – 6 LEADS

START


CONNECT T1 TO LINE 1
 CONNECT T2 TO LINE 2
 CONNECT T3 TO LINE 3
 CONNECT T7-T8-T9-OPEN

RUN

CONNECT T1 & T7 TO LINE 1
 CONNECT T2 & T8 TO LINE 2
 CONNECT T3 & T9 TO LINE 3



VIEW OF TERMINAL END

				TOLERANCES UNLESS SPECIFIED			DRAWN KL 07-26-2002								
				DEC.	INCHES		CHK	DJK	07-26-2002						
				.X	± -		APPD	EAB	07-26-2002						
				.XX	± -		TITLE EXTERNAL CONNECTION DIAGRAM 3Ø – DELTA PART WINDING START			SCALE	1=1				
				.XXX	± -					REF					
1	NEW DRAWING	MU42866	KL	07-26-2002		.XXXX	± -	MAT'L.	FMF						
NO.	REVISION		BY & DATE		CHK	ANG	± -	FINISH			PREV				
THIS DRAWING IN DESIGN AND DETAIL IS OUR PROPERTY AND MUST NOT BE USED EXCEPT IN CONNECTION WITH OUR WORK ALL RIGHTS OF DESIGN AND INVENTION ARE RESERVED THIS IS AN ELECTRONICALLY GENERATED DOCUMENT – DO NOT SCALE THIS PRINT					RFP			CAD FILE EE7341C-LN			SIZE	DRAWING NO.	PAGE	OF	REV.
					DIST WA-LB-SB						A	EE7341C-LN			1