

PRODUCT INFORMATION PACKET



Model No: LM31977
Catalog No: LM31977
300,1800,DP,447TS,3/60/460PWS&YD

Regal and Leeson are trademarks of Regal Rexnord Corporation or one of its affiliated companies.
©2023 Regal Rexnord Corporation, All Rights Reserved. MC017097E





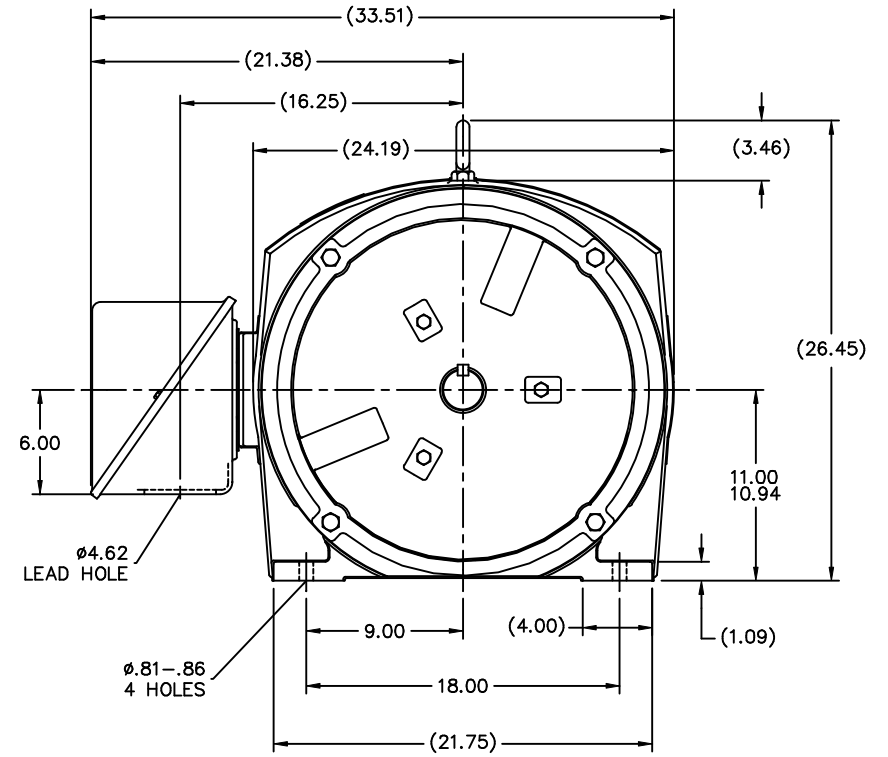
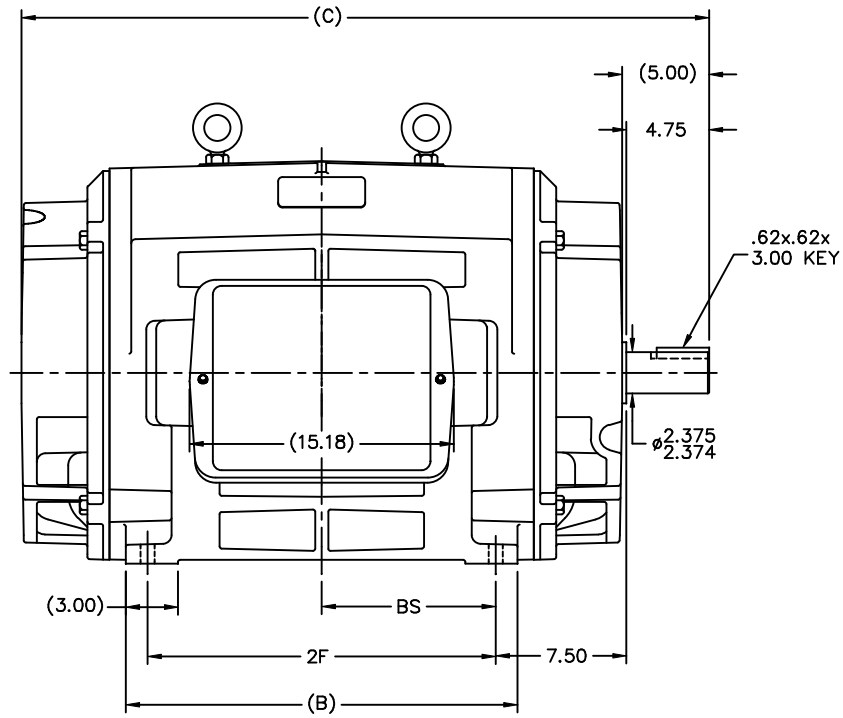
Nameplate Specifications

Phase	3	Output HP	300 & 250 Hp
Output KW	224.0 & 187.0 kW	Voltage	460 & 380 V
Speed	1780 & 1482 rpm	Service Factor	1.15 & 1.15
Frame	447TS	Enclosure	Drip Proof
Thermal Protection	No Protection	Efficiency	95.4 & 95 %
Ambient Temperature	40 °C	Frequency	60 & 50 Hz
Current	345 & 345 A	Power Factor	85.5
Duty	Continuous	Insulation Class	F
Design Code	B	KVA Code	F
Drive End Bearing Size	6314	Opp Drive End Bearing Size	6314
UL	No	CSA	Y
CE	Y	IP Code	12
Number of Speeds	1		

Technical Specifications

Electrical Type	Squirrel Cage Induction Run	Starting Method	Part Wdg Start & Wye Start Delta Run
Poles	4	Rotation	Reversible
Resistance Main	.0161 Ohms	Mounting	Rigid Base
Motor Orientation	Horizontal	Drive End Bearing	Ball
Opp Drive End Bearing	Ball	Frame Material	Cast Iron
Shaft Type	TS	Assembly/Box Mounting	F1/F2 CAPABLE
Outline Drawing	B-SS514335LN-2438	Connection Drawing	A-EE7300BH-LN

This is an uncontrolled document once printed or downloaded and is subject to change without notice. Date Created:06/23/2023



NOTES:

1. CONDUIT BOX CAN BE ROTATED IN 90° STEPS.
2. CONDUIT BOX CAN BE MOUNTED ON OPPOSITE SIDE BY REMOVING BRACKETS AND TURNING FRAME 180°.
3. NAMEPLATES TO BE READ FROM CONDUIT BOX SIDE OF MOTOR

(B-SS514570)

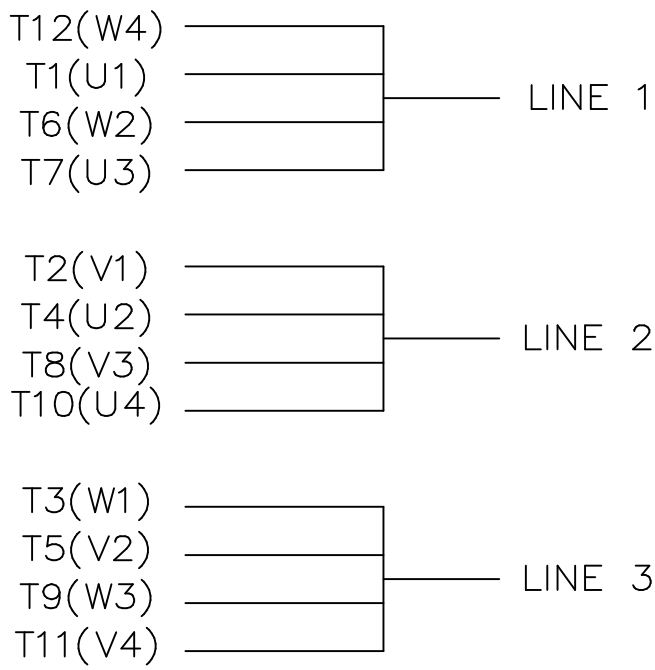
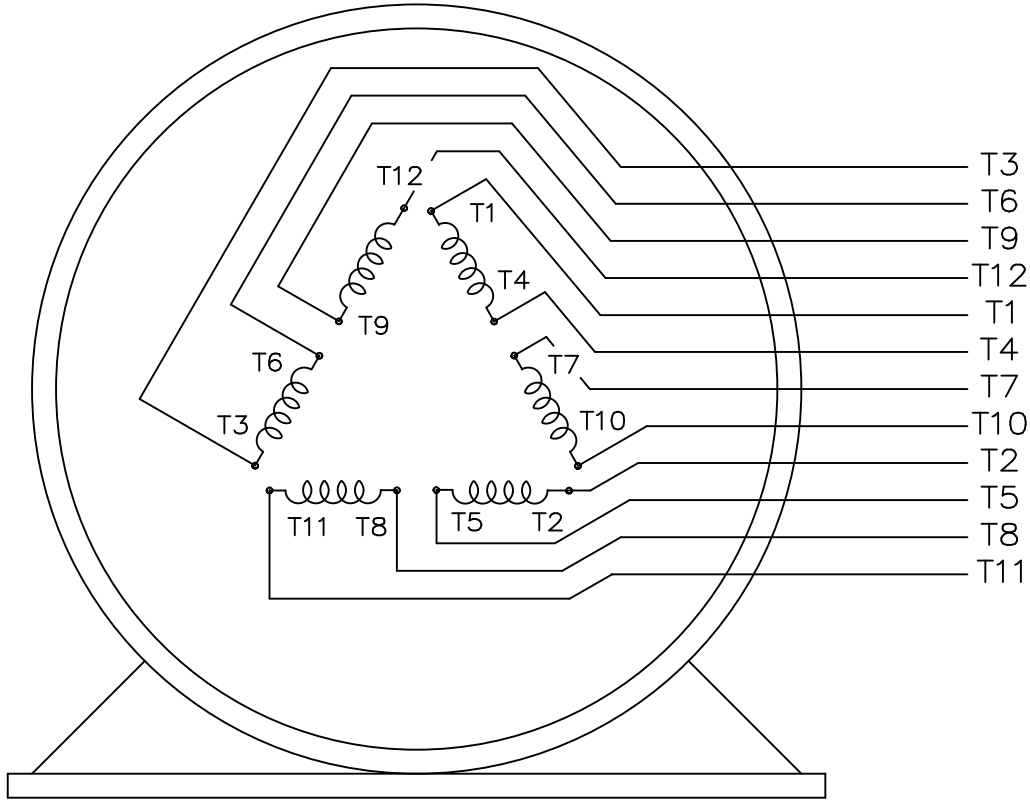
						TOLERANCES UNLESS SPECIFIED		Lincoln ROTARY	DRAWN DRS 02-10-2003			
						DEC.	INCHES		CHK	ML	02-10-2003	
						.X	±.1	TITLE OUTLINE - STD. 447/9TS FR. - DR.PR.	APPD GK 02-10-2003			
						.XX	±.03		SCALE 9-64			
						.XXX	±.005	REF				
						ML	±.0005	FMF				
						CHK	ANG ±7°30"	PREV				
						RFP	CAD FILE SS514335LN	SIZE		DRAWING NO.	PAGE OF	REV.
						DIST	WA	B		SS514335LN	2	

						TOLERANCES UNLESS SPECIFIED		Lincoln ROTARY	DRAWN DRS 02-10-2003			
						DEC.	INCHES		CHK	ML	02-10-2003	
						.X	±.1	TITLE OUTLINE - STD. 447/9TS FR. - DR.PR.	APPD GK 02-10-2003			
						.XX	±.03		SCALE 9-64			
						.XXX	±.005	REF				
						ML	±.0005	FMF				
						CHK	ANG ±7°30"	PREV				
						RFP	CAD FILE SS514335LN	SIZE		DRAWING NO.	PAGE OF	REV.
						DIST	WA	B		SS514335LN	2	


```
ERROR: undefined  
OFFENDING COMMAND: ex
```

```
STACK:
```

```
{--begin-- Pscript_Win_Data --begin-- }  
-dictionary-
```



VIEW OF TERMINAL END

				TOLERANCES UNLESS SPECIFIED			DRAWN KL 04-23-2002			
				DEC.	INCHES		CHK	DJK	04-24-2002	
				.X	±.1		APPD	EAB	04-24-2002	
				.XX	±.01		SCALE 1=1			
2	ADDED IEC TERMINAL MARKINGS CN 41429	JJB 05/24/2004	ML	.XXX	±.005	TITLE CONNECTION DIAGRAM – EXTERNAL 12 LEAD – SINGLE VOLTAGE			REF	
1	NEW DRAWING MU41562	KL 04-12-02		.XXXX	±.0005	MAT'L.			FMF	
NO.	REVISION	BY & DATE	CHK	ANG	±1/2"	FINISH			PREV	
THIS DRAWING IN DESIGN AND DETAIL IS OUR PROPERTY AND MUST NOT BE USED EXCEPT IN CONNECTION WITH OUR WORK ALL RIGHTS OF DESIGN AND INVENTION ARE RESERVED THIS IS AN ELECTRONICALLY GENERATED DOCUMENT – DO NOT SCALE THIS PRINT			RFP		CAD FILE ee7300bh_ln		SIZE	DRAWING NO.	PAGE OF	REV.
			DIST WA-SB				A	EE7300BH-LN		2