

PRODUCT INFORMATION PACKET

Model No: LM30763

Catalog No: LM30763

Elevator Duty Motor, 40 HP, 3 Ph, 60 Hz, 230/460 V, 1800 RPM, 324TC Frame, DP



Regal and are trademarks of Regal Rexnord Corporation or one of its affiliated companies.
©2022 Regal Rexnord Corporation, All Rights Reserved. MC017097E

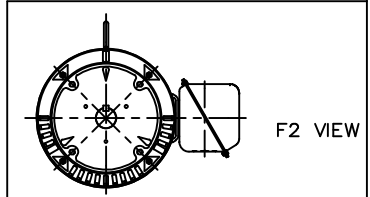
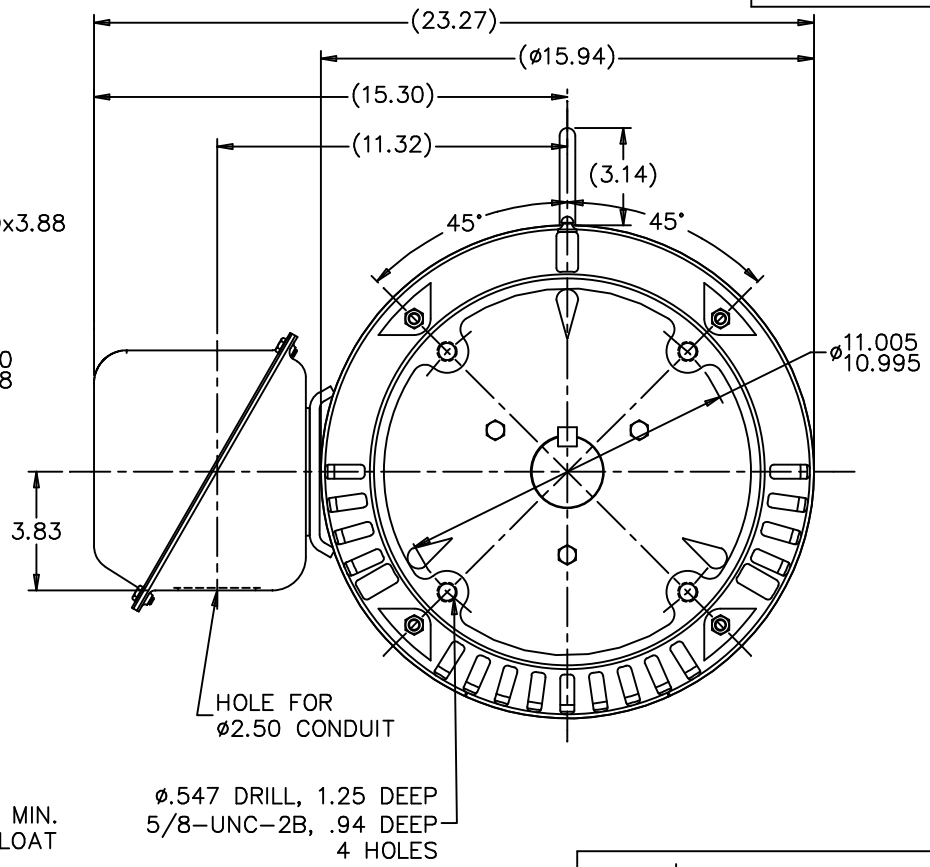
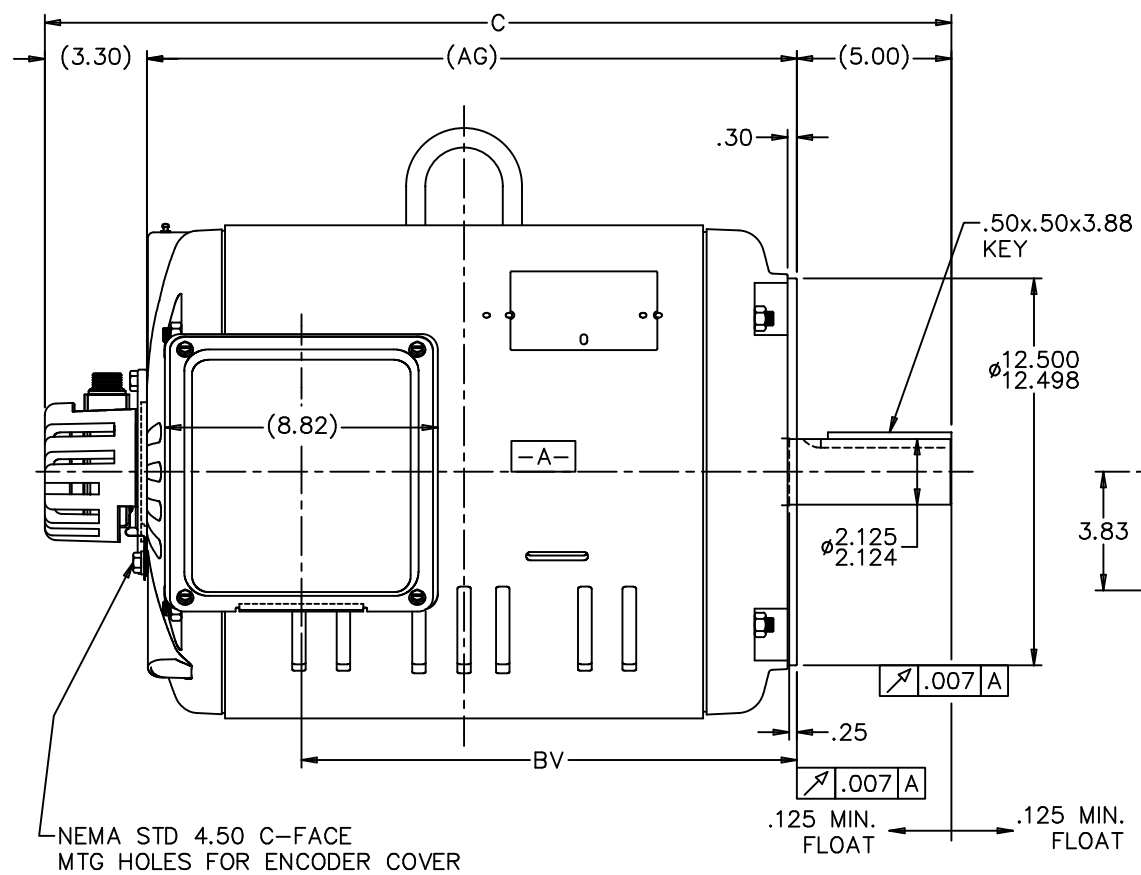
Nameplate Specifications

Output HP	40 Hp	Output KW	30.0 kW
Frequency	60 Hz	Voltage	230/460 V
Current	100.0/50.0 A	Speed	1780 rpm
Service Factor	1	Phase	3
Efficiency	93.6 %	Power Factor	80
Duty	60 Minute	Insulation Class	F
Design Code	A	KVA Code	K
Frame	324TC	Enclosure	Drip Proof
Thermal Protection	No Protection	Ambient Temperature	40 °C
Drive End Bearing Size	6311	Opp Drive End Bearing Size	6309
UL	Recognized	CSA	Y
CE	Y	IP Code	22
Number of Speeds	1		

Technical Specifications

Electrical Type	Squirrel Cage Inverter Duty	Starting Method	Wye Start Delta Run Or Inverter
Poles	4	Rotation	Reversible
Resistance Main	.14 Ohms	Mounting	Round
Motor Orientation	Horizontal	Drive End Bearing	Ball
Opp Drive End Bearing	Ball	Frame Material	Rolled Steel
Shaft Type	T	Overall Length	29.30 in
Frame Length	15.63 in	Shaft Diameter	2.125 in
Shaft Extension	5.3 in	Assembly/Box Mounting	F1/F2 CAPABLE
Connection Drawing	A-EE7308AA-LN	Outline Drawing	XG3D1EC33B-1507

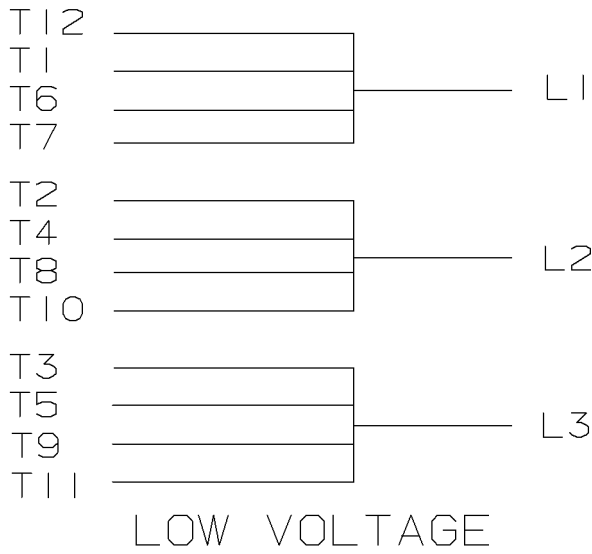
This is an uncontrolled document once printed or downloaded and is subject to change without notice. Date Created:09/07/2022



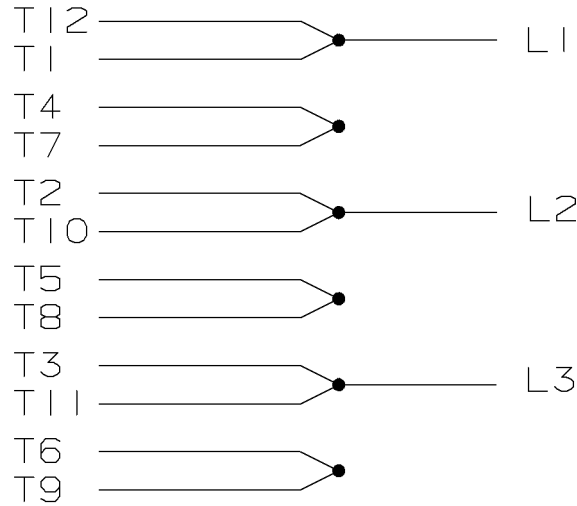
NOTES:
 1. CONDUIT BOX CAN BE ROTATED IN 90° STEPS.
 2. NAMEPLATES TO BE READ FROM CONDUIT BOX SIDE OF MOTOR.

DASH	FRAME	C	AG	BV
1507	324TC	29.30	21.01	16.02
1657	326TC	30.80	22.01	17.52

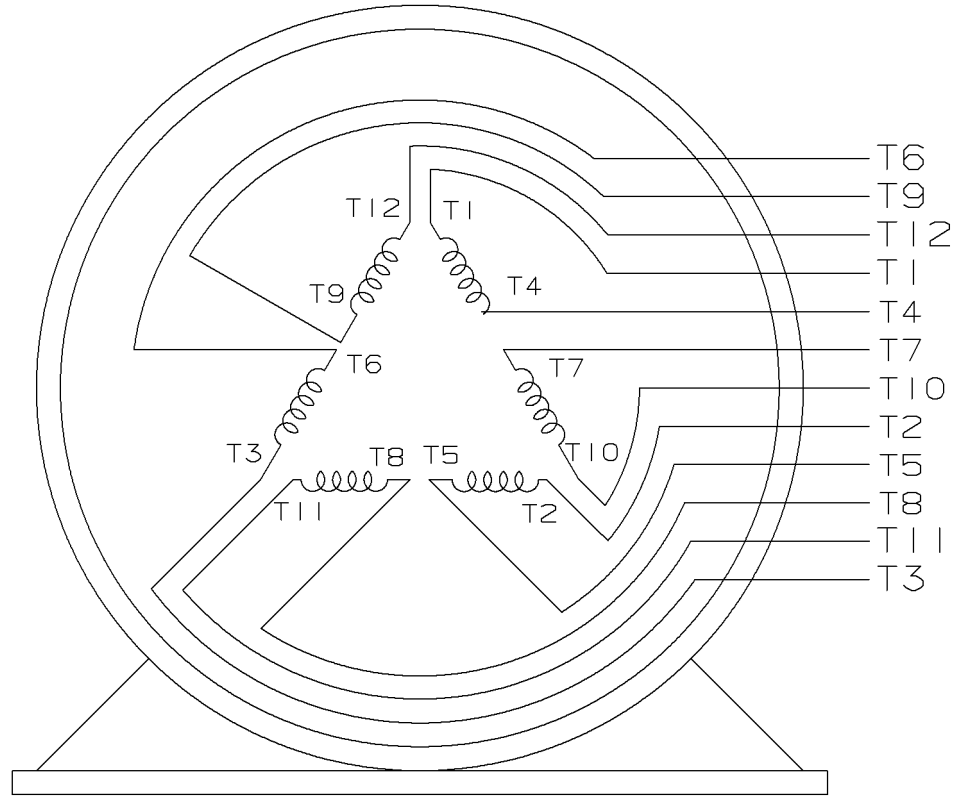
				TOLERANCES UNLESS SPECIFIED		Lincoln MOTOR		DRAWN CTO 06-04-2002	
				DEC.	INCHES			CHK	ML
				.X	±.1			APPD	HNH
				.XX	±.03	TITLE OUTLINE (NO FEET)		SCALE 1=4	
				.XXX	±.005	VVVF ELEVATOR HOIST MOTOR 320 ODP UE		REF	
1	NEW DRAWING	MU41749	CTO 06-12-2002	HNH	.XXXX	±.0005	MATL	FMF	
NO.	REVISION		BY & DATE	CHK	ANG	±7'30"	FINISH	PREV	
THIS DRAWING IN DESIGN AND DETAIL IS OUR PROPERTY AND MUST NOT BE USED EXCEPT IN CONNECTION WITH OUR WORK ALL RIGHTS OF DESIGN AND INVENTION ARE RESERVED THIS IS AN ELECTRONICALLY GENERATED DOCUMENT - DO NOT SCALE THIS PRINT				RFP	CAD FILE xg3d1ec33b		SIZE	DRAWING NO.	PAGE OF
				DIST	BY	B		XG3D1EC33B	1



LOW VOLTAGE



HIGH VOLTAGE



VIEW OF TERMINAL END

					<input checked="" type="checkbox"/> UNLESS OTHERWISE SPECIFIED DIMENSIONS ARE IN INCHES TOL. ON XX±.02 XXX±.005 XXXX±.0005 ANGLES± 7'30"			
2	08-09-1999	RE-ISSUE, ADDED '-' TO PART NUMBER	BLR			MAX. SURFACE ROUGHNESS UNLESS OTHERWISE NOTED		DRAWN BY TRB
1	06-18-1999	NEW DRAWING	TRB		FINISH	CHKD BY ML	06-18-1999	
					MATERIAL	APPD BY GK	06-18-1999	
REV	DATE	CHANGE	NAME	PART NAME 3 PHASE CONNECTION DIAGRAM 2/1 DELTA - 12 LEADS			DRWG NO A- EE7308AA-LN	

PURCHASED

CADD FILE NO.

EE7308AALN

ERROR: undefined
OFFENDING COMMAND: Pscrip

STACK:



1051 CHEYENNE AVE.
GRAFTON, WI 53024
PH. 262-277-8810

DATA VOLTS: 460

CERTIFICATION DATA SHEET

CONN. DIAGRAM: A-EE7308AA-LN
OUTLINE: XG3D1EC33B-1507
WINDING: L3244047

CAT #: LM30763

NONE 1

TYPICAL MOTOR PERFORMANCE DATA

HP	KW	SYNC RPM	FL RPM	FRAME	ENCLOSURE	TYPE	KVA CODE	DESIGN
40	30	1800	1780	324TC	DP	TDR	K	INF

PH	HZ	VOLTS	AMPS	START TYPE	DUTY	INSL	S.F.	AMB	ELEV.
3	60	230/460	100/50	Y START D RUN OR INV	60 MIN	F	1.15	40	3300

F.L. EFF	93.6	3/4 LD EFF	93.6	1/2 LD EFF	92.4	GTD EFF	ELECT. TYPE
F.L. PF	80.0	3/4 LD PF	74.0	1/2 LD PF	62.0	93.0	SQ CAGE INV DUTY

F.L. TORQUE	LR AMPS @ 460 V	L.R. TORQUE	B.D. TORQUE	F.L. RISE (° C)
118 LB-FT	450	200 LB-FT 169%	450 LB-FT 381%	100

PRESSURE @ 3	SOUND	POWER	ROTOR WK²	MAX. LOAD WK²	SAFE STALL TIME	STARTS/HOUR	MOTOR WGT
75 dBA	84 dBA		0.00 LB-FT²	0 LB-FT²	0 SEC.	0	0 LB.

***** SUPPLEMENTAL INFORMATION *****

DE BRACKET TYPE	ODE BRACKET TYPE	MOUNT TYPE	MOTOR ORIENTATION	SEVERE DUTY	HAZARDOUS LOCATION	DRIP COVER	SCREENS	PAINT
C-FACE	ENCODER	ROUND	HORIZONTAL	NO	NONE	NO	NONE	WATTSAVER

BEARINGS		GREASE	SHAFT TYPE	SPECIAL DE	SPECIAL ODE	SHAFT MATERIAL	FRAME MATERIAL
DE	ODE	POLYREX EM	T	NONE	NONE	1045 HOT ROLLED (C-204)	ROLLED STEEL
BALL	BALL						
6311	6309						

THERMOSTATS	PROTECTORS	WDG RTD's	BRG RTD's	THERMISTORS	CONTROL	SPACE HEATERS
TSTATS (N/C)	NOT	NONE	NONE	NONE	FALSE	NA

R1 (ohms/ph)	R2 (ohms/ph)	X1 (ohms/ph)	X2 (ohms/ph)	Xm (ohms/ph)	VIBRATION (in/sec)	FLOAT
0.092	0.05	0.532	0.886	11.06	0.150	BOTH

* N O T E S *	INVERTER TORQUE: CONSTANT 1000:1 INV. HP SPEED RANGE: NONE					
	ENCODER: DYNAPAR HS35 LINCOLN MS CONNECTOR 1024 PPR					

DATE: 8/21/2018	BRAKE: NONE NONE NONE FT-LB: NA VOLTAGE: NONE HZ: UL: V-INS, CONST UL REC					
-----------------	---	--	--	--	--	--

Data Sheet

Date: 8/21/2018

LM30763



Data @ **460 V**

Motor Load Data

Load	0%	25%	50%	75%	100%	115%	125%	LR
Current (Amps)	24.0	27.5	32.5	40.5	50.0	55.5	59.5	450
Torque (ft-lb)	0.00	29.0	58.5	88.5	118	136	148	200
RPM	1800	1795	1790	1785	1780	1,775	1773	0
Efficiency (%)		87.5	92.4	93.6	93.6	93.6	93.6	
P.F. (%)	5.0	39.0	62.0	74.0	80.0	82.5	84.0	23.0

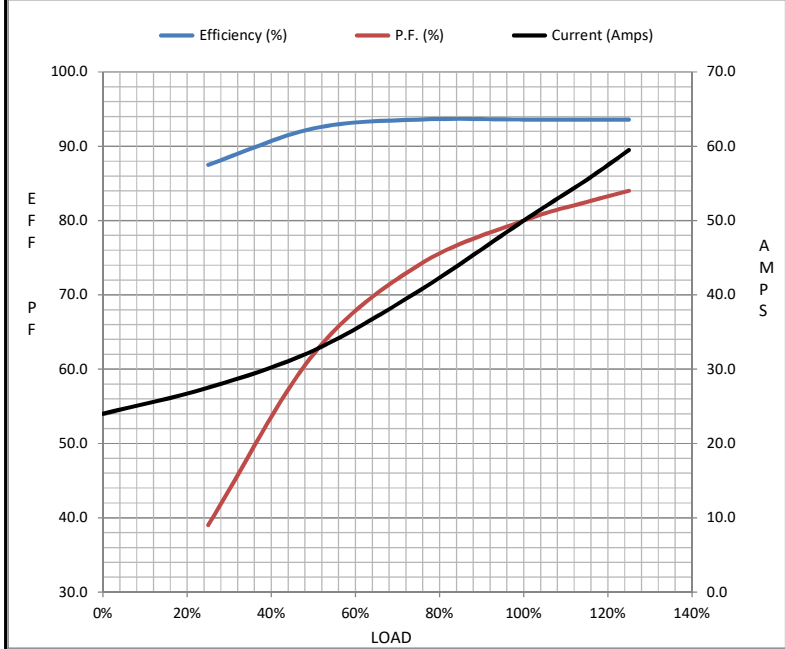
Motor Speed Data

	LR	Pull-Up	BD	Rated	Idle
Speed (RPM)	0	900	1600	1780	1800
Current (Amps)	450	400	300	50.0	24.0
Torque (ft-lb)	200	180	450	118	0.00

MOTOR IS TOO HOT

Information Block

HP	#VALUE!			
Sync. RPM	NA			
Frame	324			
Enclosure	DP			
Construction	TDR			
Voltage	230/460 V			
Frequency	60 Hz			
Design	A			
LR Code letter	K			
Service Factor	HOT			
Temp Rise @ FL	100 ° C			
Duty	60 MIN			
Ambient	40 ° C			
Elevation	1,000 feet			
Rotor/Shaft wk ²	0.00 Lb-Ft ²			
Ref Wdg	L3244047 NONE			
Sound Pressure @ 1M	75 dBA			
VFD Rating	CONSTANT 1000:1			
Outline Dwg	XG3D1EC33B-1507			
Conn. Diag	A-EE7308AA-LN			
Additional Specifications:				
0				
0				
EQUIV CKT (OHMS / PHASE)				
R1	R2	X1	X2	Xm
0.0920	0.0500	0.5320	0.8860	11.0600



Speed - Torque Curve

