

PRODUCT INFORMATION PACKET

Model No: LM30753

Catalog No: LM30753

Elevator Duty Motor, 20 HP, 3 Ph, 60 Hz, 200 V, 1800 RPM, 256TC Frame, DP



Regal and are trademarks of Regal Rexnord Corporation or one of its affiliated companies.
©2022 Regal Rexnord Corporation, All Rights Reserved. MC017097E

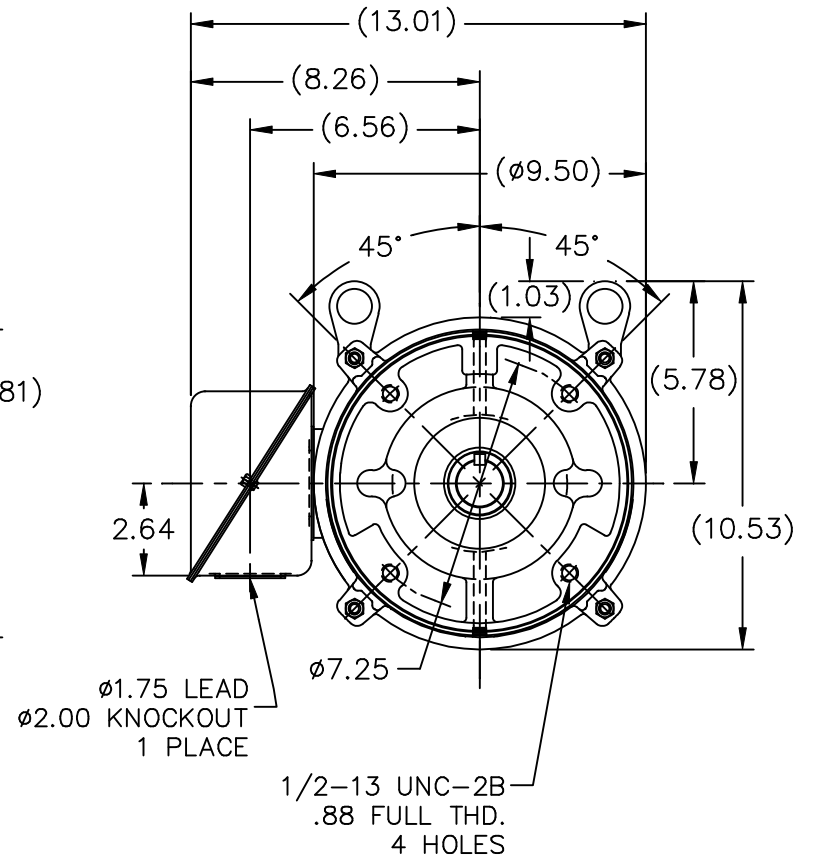
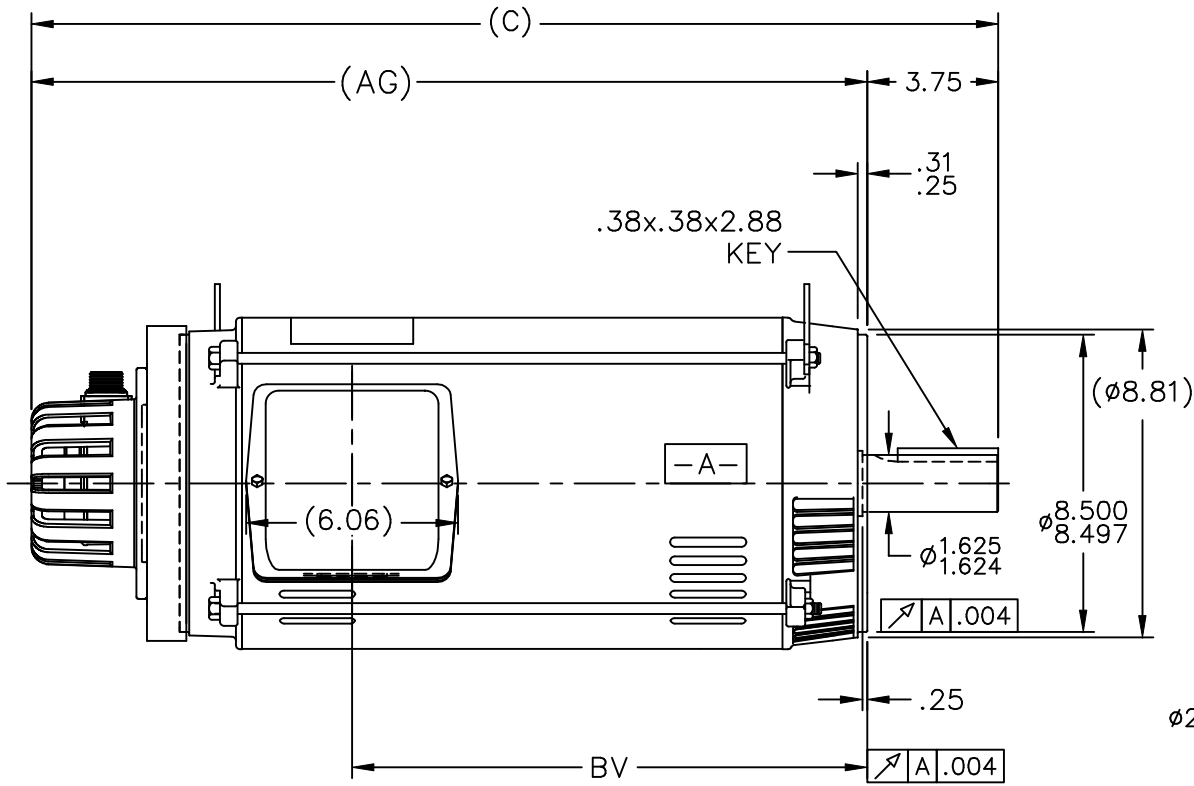
Nameplate Specifications

Output HP	20 Hp	Output KW	14.9 kW
Frequency	60 Hz	Voltage	200 V
Current	62.0 A	Speed	1760 rpm
Service Factor	1	Phase	3
Efficiency	91 %	Power Factor	79.3
Duty	Continuous	Insulation Class	F
Design Code	INV	KVA Code	J
Frame	256TC	Enclosure	Drip Proof
Thermal Protection	Thermostat	Ambient Temperature	40 °C
Drive End Bearing Size	309	Opp Drive End Bearing Size	208
UL	Recognized	CSA	Y
CE	Y	IP Code	12
Number of Speeds	1		

Technical Specifications

Electrical Type	Squirrel Cage Inverter Duty	Starting Method	Inverter Only
Poles	4	Rotation	Reversible
Resistance Main	.428 Ohms	Mounting	Round
Motor Orientation	Horizontal	Drive End Bearing	Ball
Opp Drive End Bearing	Ball	Frame Material	Rolled Steel
Shaft Type	T	Overall Length	27.65 in
Frame Length	15.53 in	Shaft Diameter	1.625 in
Shaft Extension	4.03 in	Assembly/Box Mounting	F1/F2 CAPABLE
Outline Drawing	SS88789LN-1515	Connection Drawing	EE7300T-LN

This is an uncontrolled document once printed or downloaded and is subject to change without notice. Date Created:09/07/2022



- NOTES:
 1. NAMEPLATE TO BE READ FROM C'BOX SIDE OF MOTOR.
 2. BOX CAN BE MOUNTED IN 90° STEPS.
 3. BOX CAN BE MOUNTED ON OPPOSITE SIDE BY REMOVING BRACKETS AND TURNING FRAME 180°. (EXCEPT AS NOTED.)

DASH	FR.	C	AG	BV
1340	254TC	25.85	22.10	12.76
1515	254/256TC	27.65	23.90	14.50

NO.	REVISION	BY & DATE	CHK	TOLERANCES UNLESS SPECIFIED	
				DEC.	INCHES
4	ADDED VENTS TO REAR BRKT. ISAAC #07-2780	RWR 11-09-2007	ML	.X	±.1
3	REVISE D.E. BRACKET PER ISAAC #07-24446	RWR 10-12-2007	ML	.XX	±.03
2	CHANGED REAR BRACKET VIEW CN 29100-3428	ERH 05-07-2003	DRS	.XXX	±.005
1	NEW DRAWING MU44630	CAV 12-18-2002	BW	.XXXX	±.0005
				ANG	±7'30"

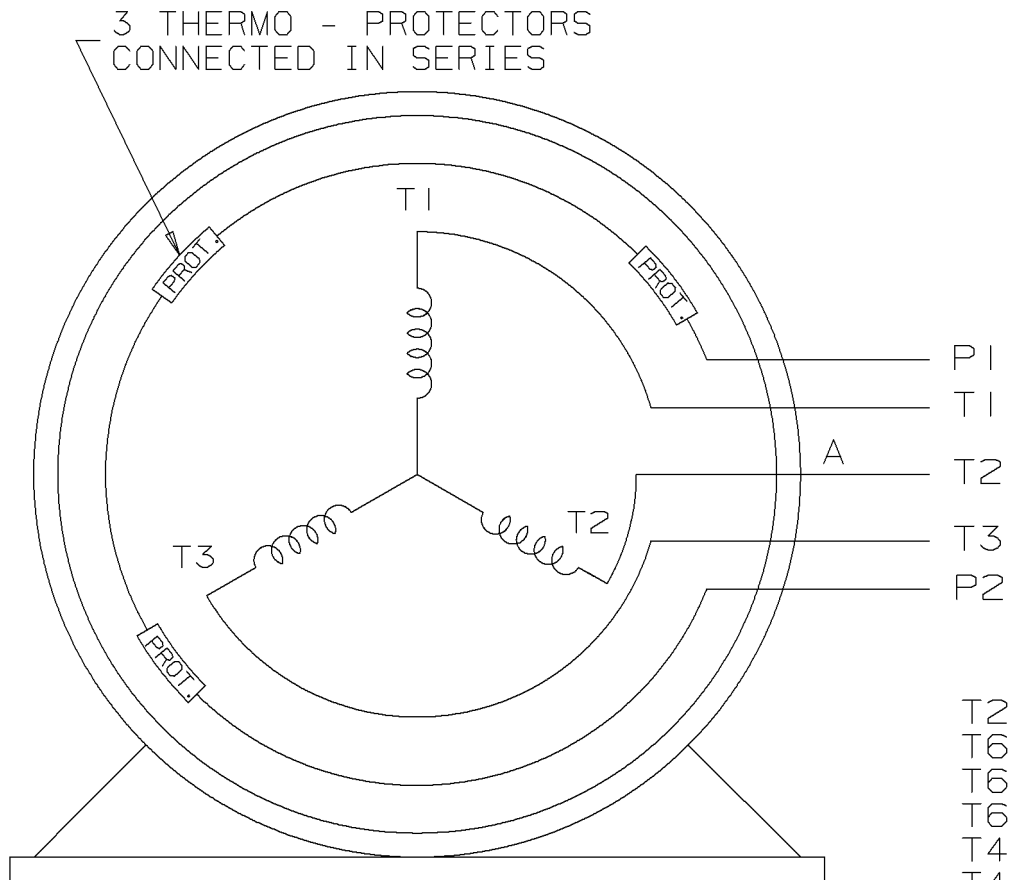
		DRAWN CAV 12-18-2002	
		CHK ML 12-19-2002	APPD BW 12-19-2002
TITLE OUTLINE - STEEL C'BOX HS35 TACH 250TC FR. - BB - DR.PR.		SCALE 1=5.5	REF
		FMF	PREV
RFP	CAD FILE ss88789ln	SIZE A	DRAWING NO. SS88789LN
DIST LB		PAGE	OF
		REV.	4

THREE PHASE - SINGLE VOLTAGE
MOTOR - CONDUIT BOX @ 'A'

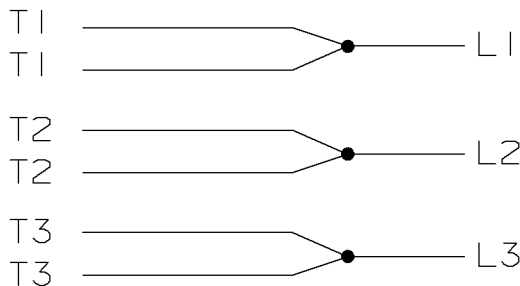
A-EE7300T-LN

TO REVERSE ROTATION:
INTERCHANGE ANY TWO LINE
LEAD CONNECTIONS

NOTE FOR FACTORY USE ONLY:
TO SURGE TEST:
FOR 3 LEAD COMMON CONNECT:
CONNECT P1 TO T1 THEN P2 TO L1
FOR 6 LEAD COMMON CONNECT:
CONNECT P1 TO BOTH T1
THEN P2 TO L1



IF MOTOR HAS MULTIPLE
T'S PER LEAD CONNECT
TOGETHER LIKE T'S



A-9806 DECAL

- T2BM
- T6AW
- T6AL
- T6Z
- T4EG
- T4BF
- T8A
- T6H
- T6A
- T4AX
- T4A
- T2A
- T2F

VIEW OF TERMINAL END

						<input checked="" type="checkbox"/> UNLESS OTHERWISE SPECIFIED DIMENSIONS ARE IN INCHES TOL. ON XX± XXX±.005 XXXX±.0005 ANGLES±		
						MAX. SURFACE ROUGHNESS UNLESS OTHERWISE NOTED	DRAWN BY TJB 04-06-2000	
				FINISH	CHKD BY ML 04-07-2000			
				MATERIAL	APPD BY ET 04-10-2000			
REV	DATE	CHANGE	NAME	PART NAME CONNECTION DIAGRAM SINGLE VOLT - 3Ø MOTOR WITH PROTECTOR			DRWG NO A-EE7300T-LN	
				PURCHASED		CADD FILE NO. EE7300T-LN		



1051 CHEYENNE AVE.
GRAFTON, WI 53024
PH. 262-277-8810

DATA VOLTS: 460

CERTIFICATION DATA SHEET

CONN. DIAGRAM: A-EE7300T-LN
OUTLINE: A-SS88789LN-1515
WINDING: K2154412

CAT #: LM30753

R1 2

TYPICAL MOTOR PERFORMANCE DATA

HP	KW	SYNC RPM	FL RPM	FRAME	ENCLOSURE	TYPE	KVA CODE	DESIGN
20	14.9	1800	1760	256TC	DP	TDX	J	INF

PH	HZ	VOLTS	AMPS	START TYPE	DUTY	INSL	S.F.	AMB	ELEV.
3	60	200	62	INVERTER ONLY	SPL	F	1.15	40	3300

F.L. EFF	91.0	3/4 LD EFF	91.7	1/2 LD EFF	90.2	GTD EFF	ELECT. TYPE
F.L. PF	79.3	3/4 LD PF	74.0	1/2 LD PF	63.0	89.5	SQ CAGE INV DUTY

F.L. TORQUE	LR AMPS @ 460 V	L.R. TORQUE	B.D. TORQUE	F.L. RISE (° C)
59.5 LB-FT	414	170 LB-FT 286%	180 LB-FT 303%	100

PRESSURE @ 3	SOUND	POWER	ROTOR WK²	MAX. LOAD WK²	SAFE STALL TIME	STARTS/HOUR	MOTOR WGT
70 dBA	79 dBA		1.70 LB-FT²	0 LB-FT²	0 SEC.	0	185 LB.

***** SUPPLEMENTAL INFORMATION *****

DE BRACKET TYPE	ODE BRACKET TYPE	MOUNT TYPE	MOTOR ORIENTATION	SEVERE DUTY	HAZARDOUS LOCATION	DRIP COVER	SCREENS	PAINT
C-FACE	ENCODER	ROUND	HORIZONTAL	NO	NONE	NO	NONE	WATTSAVER

BEARINGS		GREASE	SHAFT TYPE	SPECIAL DE	SPECIAL ODE	SHAFT MATERIAL	FRAME MATERIAL
DE	ODE	POLYREX EM	T	NONE	NONE	1045 HOT ROLLED (C-204)	ROLLED STEEL
BALL	BALL						
309	208						

THERMOSTATS	PROTECTORS	WDG RTD's	BRG RTD's	THERMISTORS	CONTROL	SPACE HEATERS
TSTATS (N/C)	NOT	NONE	NONE	NONE	FALSE	NA

R1 (ohms/ph)	R2 (ohms/ph)	X1 (ohms/ph)	X2 (ohms/ph)	Xm (ohms/ph)	VIBRATION (in/sec)	FLOAT
0.178	0.156	0.614	0.902	12.724	0.150	BOTH

* N O T E S *	INVERTER TORQUE: CONSTANT 1000:1 INV. HP SPEED RANGE: NONE					
	ENCODER: DYNAPAR HS35 LINCOLN MS CONNECTOR 1024 PPR					

DATE: 8/21/2018	BRAKE: NONE NONE NONE FT-LB: NA VOLTAGE: NONE HZ: UL: V-INS, CONST UL REC					
-----------------	---	--	--	--	--	--

Data Sheet

Date: 8/21/2018

LM30753



Data @ **200 V**

Motor Load Data

Load	0%	25%	50%	75%	100%	115%	125%	LR
Current (Amps)	39.1	40.3	46.0	54.1	62.1	69.0	75.9	414
Torque (ft-lb)	0.00	15.0	29.5	44.5	59.5	67.3	75.0	170
RPM	1800	1790	1780	1770	1760	1,756	1750	0
Efficiency (%)		86.0	90.2	91.7	91.0	90.6	90.2	
P.F. (%)	5.5	41.5	63.0	74.0	79.3	80.4	81.5	43.0

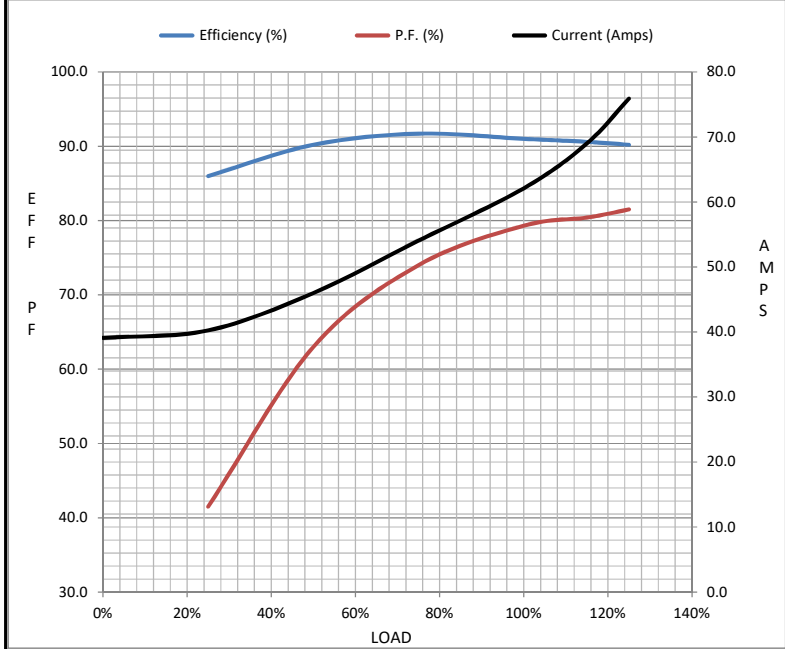
Motor Speed Data

	LR	Pull-Up	BD	Rated	Idle
Speed (RPM)	0	900	1625	1760	1800
Current (Amps)	414	373	265	62.1	39.1
Torque (ft-lb)	170	153	180	59.5	0.00

MOTOR IS TOO HOT

Information Block

HP	#VALUE!			
Sync. RPM	NA			
Frame	256			
Enclosure	DP			
Construction	TDX			
Voltage	200 V			
Frequency	60 Hz			
Design	A			
LR Code letter	J			
Service Factor	HOT			
Temp Rise @ FL	100 ° C			
Duty	SPL			
Ambient	40 ° C			
Elevation	1,000 feet			
Rotor/Shaft wk ²	1.70 Lb-Ft ²			
Ref Wdg	K2154412 R1			
Sound Pressure @ 1M	70 dBA			
VFD Rating	CONSTANT 1000:1			
Outline Dwg	A-SS88789LN-1515			
Conn. Diag	A-EE7300T-LN			
Additional Specifications:				
0				
0				
EQUIV CKT (OHMS / PHASE)				
R1	R2	X1	X2	Xm
0.1780	0.1560	0.6140	0.9020	12.7240



Speed - Torque Curve

