

# PRODUCT INFORMATION PACKET



Model No: LM30696  
Catalog No: LM30696  
30 HP Special Voltage Motor, 3 phase, 1800 RPM, 200/400 V, 286T Frame, ODP  
Special Voltage Motors



Regal and Leeson are trademarks of Regal Rexnord Corporation or one of its affiliated companies.  
©2021 Regal Rexnord Corporation, All Rights Reserved. MC017097E





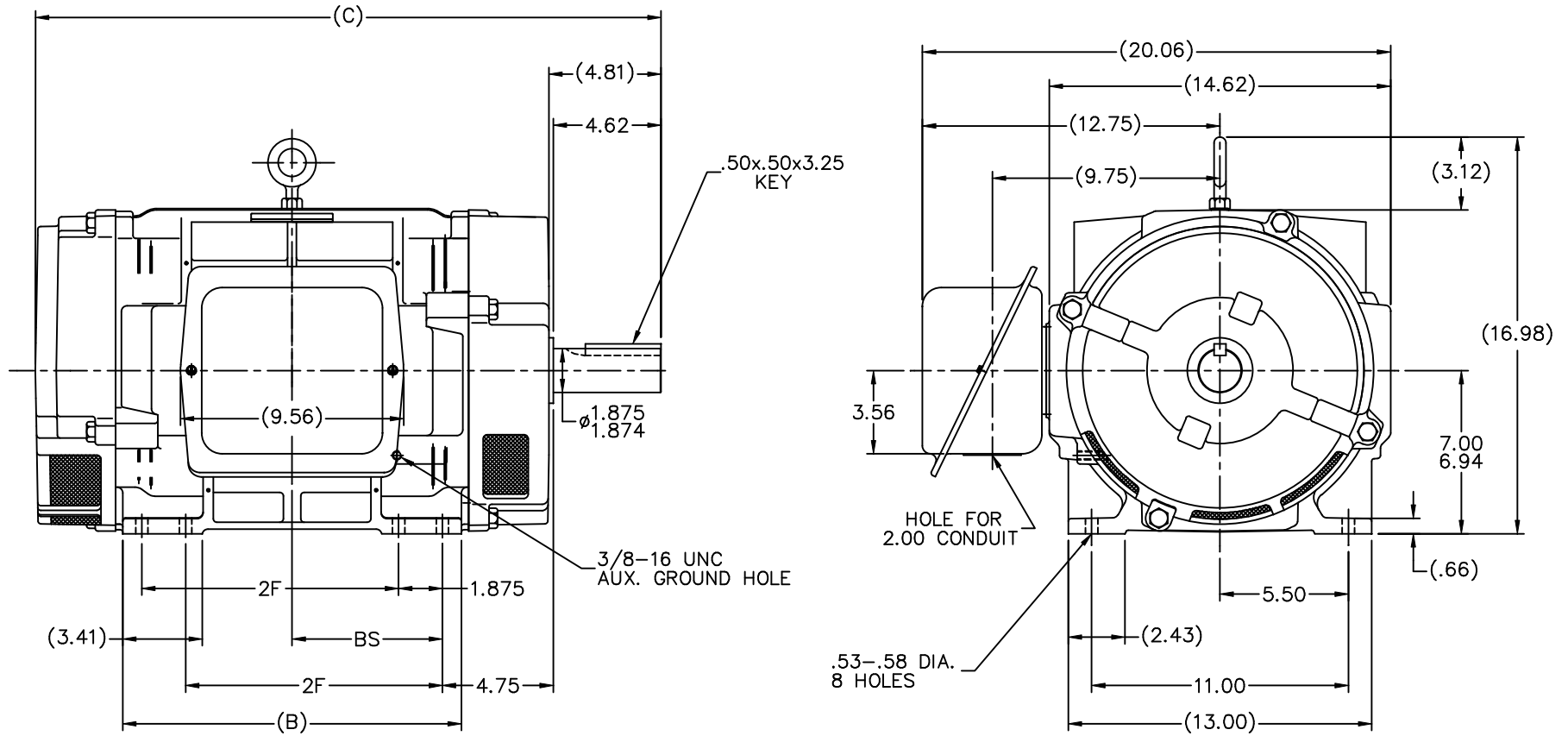
### Nameplate Specifications

Output HP	30 Hp	Output KW	22.4 kW
Frequency	60 Hz	Voltage	200/400 V
Current	84.0/42.0 A	Speed	1775 rpm
Service Factor	1.15	Phase	3
Efficiency	94.1 %	Power Factor	81
Duty	Continuous	Insulation Class	F
Design Code	B	KVA Code	G
Frame	286T	Enclosure	Drip Proof
Thermal Protection	No	Ambient Temperature	40 °C
Drive End Bearing Size	6311	Opp Drive End Bearing Size	6210
UL	Recognized	CSA	Y
CE	Y	IP Code	12
Number of Speeds	1		

### Technical Specifications

Electrical Type	Squirrel Cage Induction Run	Starting Method	Wye Start Delta Run
Poles	4	Rotation	Reversible
Resistance Main	.22 Ohms	Mounting	Rigid Base
Motor Orientation	Horizontal	Drive End Bearing	Ball
Opp Drive End Bearing	Ball	Frame Material	Cast Iron
Shaft Type	T	Overall Length	26.81 in
Frame Length	15.12 in	Shaft Diameter	1.875 in
Shaft Extension	4.62 in	Assembly/Box Mounting	F1/F2 CAPABLE
Outline Drawing	SS207470LN-1512	Connection Drawing	EE7358-LN

This is an uncontrolled document once printed or downloaded and is subject to change without notice. Date Created:10/12/2021



## NOTES:

- CONDUIT BOX CAN BE ROTATED IN 90° STEPS.
- CONDUIT BOX CAN BE MOUNTED ON OPPOSITE SIDE BY REMOVING BRACKETS AND TURNING FRAME 180°.
- NAMEPLATE TO BE READ FROM CONDUIT BOX SIDE OF MOTOR.

DASH	FRAME	B	C	2F	BS		
1325	284T	12.63	24.94	9.50	5.50		02-17-1000
1512	286T	14.50	26.81	11.00	6.44		

				TOLERANCES UNLESS SPECIFIED		Lincoln MOTOR	DRAWN BJW 3/20/2000	
				DEC.	INCHES		CHK	ML 3/21/2000
				.X	±.1		APPD	TB 3/21/2000
				.XX	±.03		SCALE	7=32
2	ADDED SCREENS TO BRACKETS	MU80368	TJW 6/26/2007	MSG	.XXX ±.005	TITLE OUTLINE	REF	
1	NEW DRAWING		BJW 3/21/2000		.XXXX ±.0005	280 FR. - TS - DR.PR. - CAST IRON	FMF	
NO.	REVISION	BY & DATE	CHK	ANG	±7°30"	MAT'L	FINISH	PREV
THIS DRAWING IN DESIGN AND DETAIL IS OUR PROPERTY AND MUST NOT BE USED EXCEPT IN CONNECTION WITH OUR WORK ALL RIGHTS OF DESIGN AND INVENTION ARE RESERVED THIS IS AN ELECTRONICALLY GENERATED DOCUMENT - DO NOT SCALE THIS PRINT						RFP	CAD FILE SS207470LN	SIZE B
						DIST LB	DRAWING NO. SS207470LN	PAGE 1 OF 1
							REV. 2	

ERROR: syntaxerror  
OFFENDING COMMAND: --nostringval--

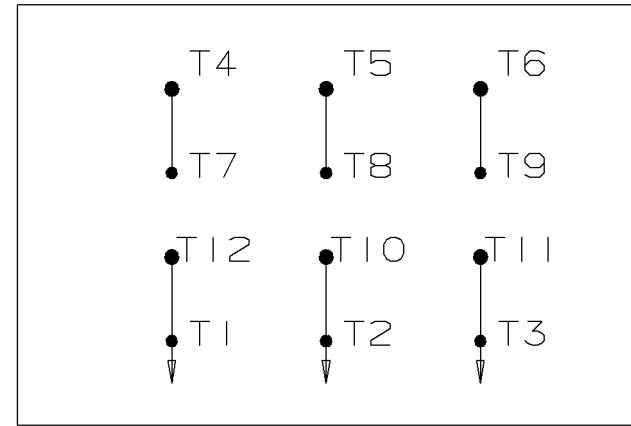
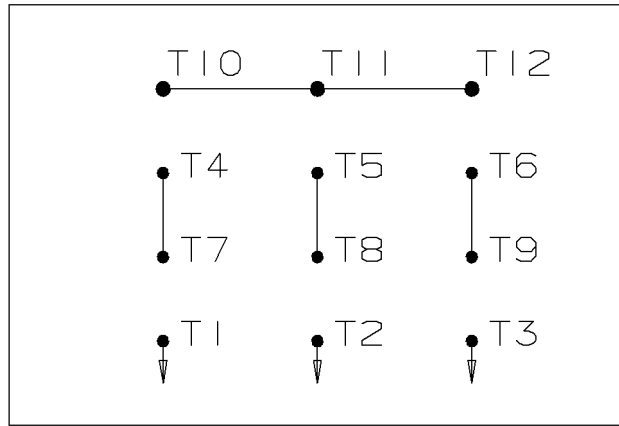
STACK:

/p2e  
-savelevel-

# WYE START

# HIGH VOLTAGE

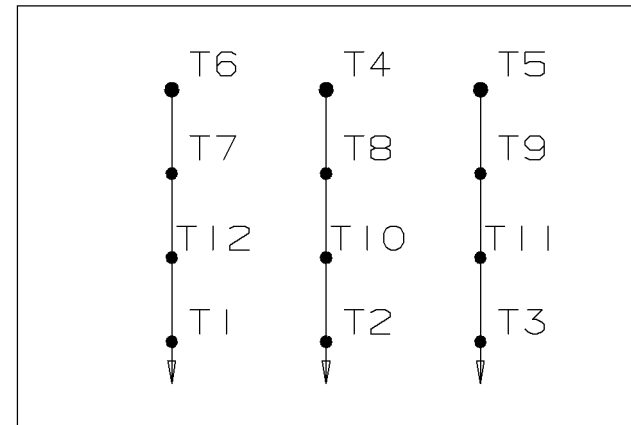
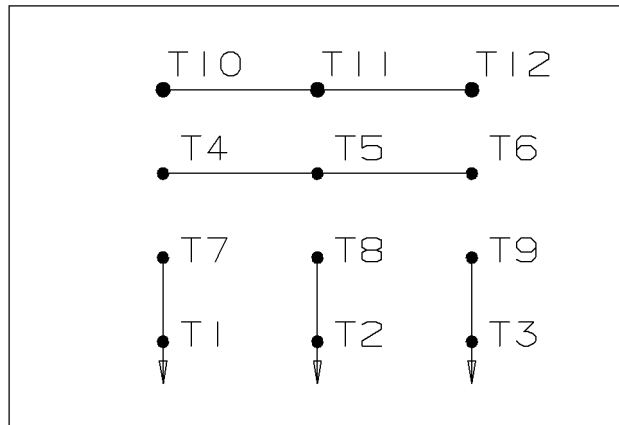
# DELTA RUN



# WYE START

# LOW VOLTAGE

# DELTA RUN



4/2 CKTY Δ

						<input checked="" type="checkbox"/> UNLESS OTHERWISE SPECIFIED DIMENSIONS ARE IN INCHES TOL. ON XX± .02    XXX± .005    XXXX± .0005    ANGLES± 7°30"	
						MAX. SURFACE ROUGHNESS UNLESS OTHERWISE NOTED	DRAWN BY DRS    12-07-1999
				FINISH		CHKD BY ML    12-07-1999	
1    12-07-1999    NEW DRAWING		DRS		MATERIAL		APPD BY TB    12-07-1999	
REV	DATE	CHANGE	NAME	PART NAME CONNECTION DIAGRAM			DRWG NO A- EE7358-LN
				PURCHASED		CADD FILE NO. EE7358-LN	



**2100 WASHINGTON ST.  
GRAFTON, WI  
PH. 262-277-8810**

**CERTIFICATION DATA SHEET**

**CONN. DIAGRAM:** A-EE7358-LN

**OUTLINE:** B-SS207470LN-1512

**CATALOG #:** LM30696

**WINDING #:** K2864262 4

**MOUNTING:** F1/F2 CAPABLE

**TYPICAL MOTOR PERFORMANCE DATA**

HP	kW	SYNC. RPM	F.L. RPM	FRAME	ENCLOSURE	KVA CODE	DESIGN
30	22.4	1800	1775	286T	DP	G	B

PH	Hz	VOLTS	AMPS	START TYPE	DUTY	INSL	S.F.	AMB°C
3	60	200/400	84/42	WYE START DELTA RUN	CONTINUOUS	F3	1.15	40

<b>FULL LOAD EFF:</b> 94.1	<b>3/4 LOAD EFF:</b> 94.1	<b>1/2 LOAD EFF:</b> 93.6	<b>GTD. EFF</b>	<b>ELEC. TYPE</b>
<b>FULL LOAD PF:</b> 81	<b>3/4 LOAD PF:</b> 77	<b>1/2 LOAD PF:</b> 66.5	93.6	SQ CAGE IND RUN

F.L. TORQUE	LOCKED ROTOR AMPS	L.R. TORQUE	B.D. TORQUE	F.L. RISE°C
89 LB-FT	499.1 / 249.6	165 LB-FT 185 %	240 LB-FT 270 %	25

SOUND PRESSURE @ 3 FT.	SOUND POWER	ROTOR WK^2	MAX. WK^2	SAFE STALL TIME	STARTS / HOUR	APPROX. MOTOR WGT
72 dBA	82 dBA	4.7 LB-FT^2	- LB-FT^2	20 SEC.	-	460 LBS.

**\*\*\* SUPPLEMENTAL INFORMATION \*\*\***

DE BRACKET TYPE	ODE BRACKET TYPE	MOUNT TYPE	ORIENTATION	SEVERE DUTY	HAZARDOUS LOCATION	DRIP COVER	SCREENS	PAINT
STANDARD	STANDARD	RIGID	HORIZONTAL	FALSE	NONE	FALSE	NONE	GRAY - LINCOLN

BEARINGS		GREASE	SHAFT TYPE	SPECIAL DE	SPECIAL ODE	SHAFT MATERIAL	FRAME MATERIAL
DE	ODE						
BALL	BALL						
6311	6210	POLYREX EM	T	NONE	NONE	1045 HOT ROLLED (C-204)	CAST IRON

THERMO-PROTECTORS				THERMISTORS	CONTROL	SPACE HEATERS
THERMOSTATS	PROTECTORS	WDG RTDs	BRG RTDs			
NONE	NOT	NONE	NONE	NONE	FALSE	NONE VOLTS

\*  
  
N  
  
O  
  
T  
  
E  
  
S  
  
\*

<b>INVERTER TORQUE:</b> NONE
<b>INV. HP SPEED RANGE:</b> NONE
<b>ENCODER:</b> NONE NONE NONE NONE NONE PPR
<b>BRAKE:</b> NONE NONE NONE P/N NONE NONE NONE NONE FT-LB NONE V NONE Hz

## Data Sheet

Date: 1/29/2018

LM30696



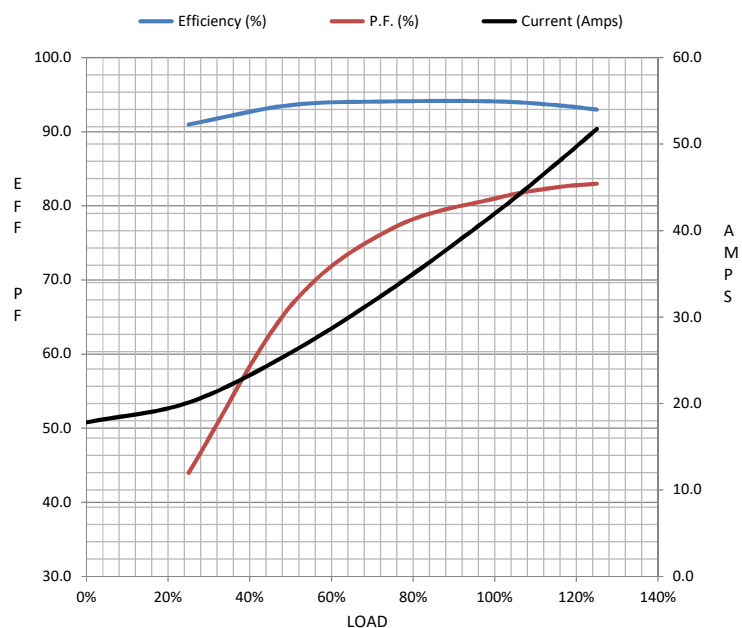
Data @ 400 V

## Motor Load Data

Load	0%	25%	50%	75%	100%	115%	125%	LR	
Current (Amps)	17.8	20.1	25.9	33.4	42.0	47.7	51.8	250	
Torque (ft-lb)	0.00	22.0	44.0	66.5	89.0	100	112	165	
RPM	1800	1795	1785	1780	1775	1.770	1765	0	
Efficiency (%)		91.0	93.6	94.1	94.1	93.6	93.0		
P.F. (%)	4.0	44.0	66.5	77.0	81.0	82.5	83.0	36.0	

## Motor Speed Data

	LR	Pull-Up	BD	Rated	Idle	Information Block			
Speed (RPM)	0	900	1675	1775	1800	HP	30.0		
Current (Amps)	250	219	144	42.0	17.8	Sync. RPM	1800		
Torque (ft-lb)	165	145	240	89.0	0.00	Frame	286		



Frame	286			
Enclosure	DP			
Construction	TDN			
Voltage	200/400	V		
Frequency	60	Hz		
Design	B			
LR Code letter	G			
Service Factor	1.15			
Temp Rise @ FL	25	° C		
Duty	CONT			
Ambient	40	° C		
Elevation	1,000	feet		
Rotor/Shaft wk²	4.7	Lb-Ft²		
Ref Wdg	K2864262	NONE		
Sound Pressure @ 1M	72	dBA		
VFD Rating	NONE			
Outline Dwg	B-SS207470LN-1512			
Conn. Diag	A-EE7358-LN			
Additional Specifications:				
0				
0				
EQUIV CKT (OHMS / PHASE)				
R1	R2	X1	X2	Xm
0.1000	0.0820	0.5360	0.6620	12.7110

## Speed - Torque Curve

