

PRODUCT INFORMATION PACKET



Model No: LM28914

Catalog No: LM28914

Elevator Duty Motor, 75 & 100 HP, 3 Ph, 60 & 60 Hz, 230/460 & 230/460 V, 1800 & 1800 RPM,
365T Frame, DP



Regal and Leeson are trademarks of Regal Rexnord Corporation or one of its affiliated companies.

©2023 Regal Rexnord Corporation, All Rights Reserved. MC017097E



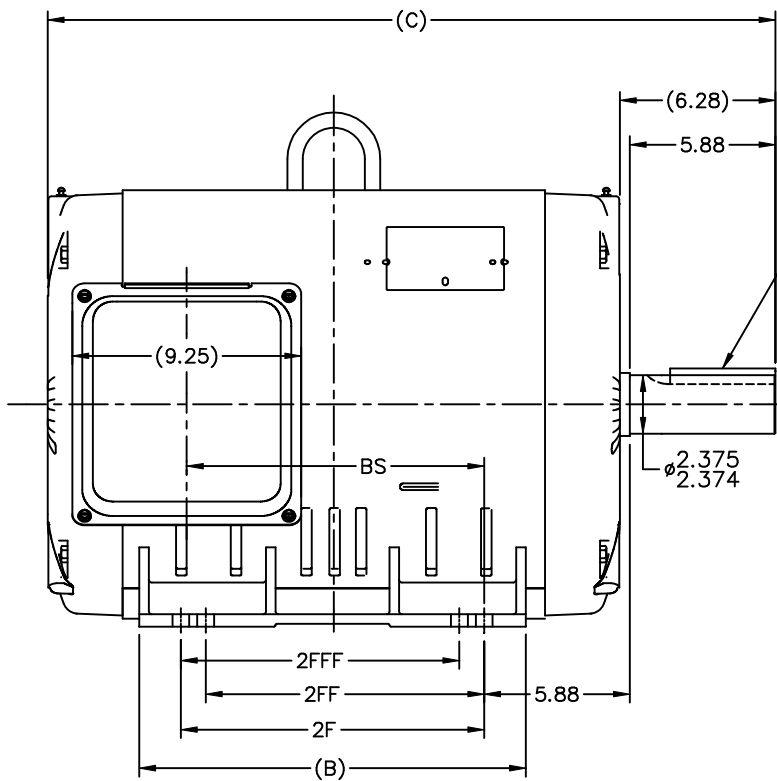


Nameplate Specifications

Phase	3	Output HP	75 & 100 Hp
Output KW	56.0 & 75.0 kW	Voltage	230/460 & 230/460 V
Speed	1785 & 1785 rpm	Service Factor	1.0 & 1.0
Frame	365T	Enclosure	Drip Proof
Thermal Protection	No Protection	Efficiency	94.1 & 92.4 %
Ambient Temperature	40 °C	Frequency	60 & 60 Hz
Current	187/93.5 & 250/125 A	Power Factor	80
Duty	120/80 Starts/Hour	Insulation Class	F
Design Code	INV	KVA Code	F
Drive End Bearing Size	313	Opp Drive End Bearing Size	311
UL	Recognized	CSA	Y
CE	Y	IP Code	22
Number of Speeds	1		

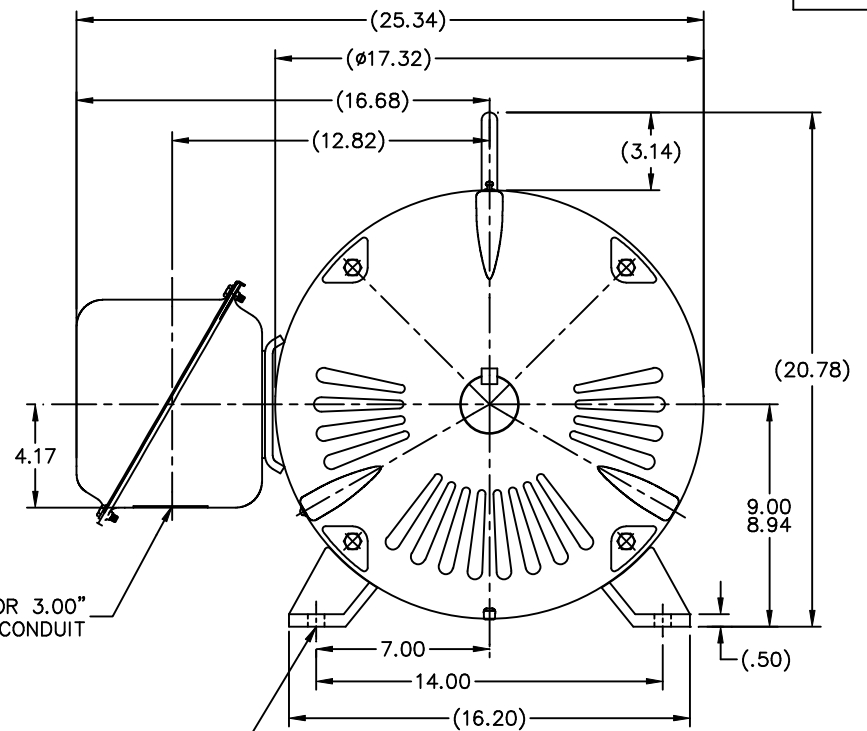
Technical Specifications

Electrical Type	Squirrel Cage Induction Run	Starting Method	Wye Start Delta Run
Poles	4	Rotation	Reversible
Resistance Main	.082 Ohms	Mounting	Rigid Base
Motor Orientation	Horizontal	Drive End Bearing	Ball
Opp Drive End Bearing	Ball	Frame Material	Rolled Steel
Shaft Type	T	Overall Length	29.40 in
Frame Length	16.48 in	Shaft Diameter	2.375 in
Shaft Extension	5.88 in	Assembly/Box Mounting	F1/F2 CAPABLE
Connection Drawing	A-EE7308AA-LN	Outline Drawing	XH2D1SS1-1648



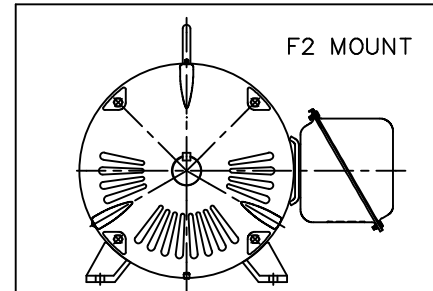
.62x.62x4.25 KEY

2.375
2.374



HOLE FOR 3.00" CONDUIT

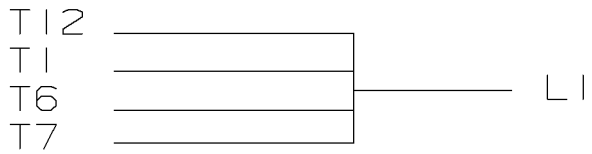
Ø.68 DRILL THRU
364 - 2 HOLES EACH SIDE
365 - 4 HOLES EACH SIDE



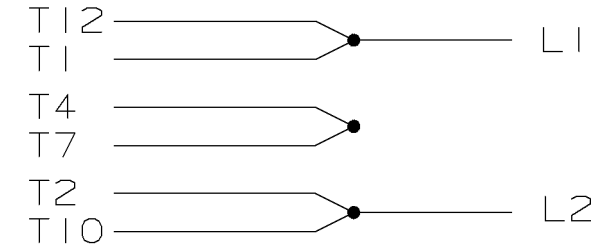
NOTES:
1. NAMEPLATES TO BE READ FROM CONDUIT BOX SIDE OF MOTOR.

DASH	FRAME	C	B	2F	2FF	2FFF	BS
1548	364T	28.40	14.61	11.25	11.25	11.25	11.02
1648	365T	29.40	15.61	12.25	11.25	11.25	12.02

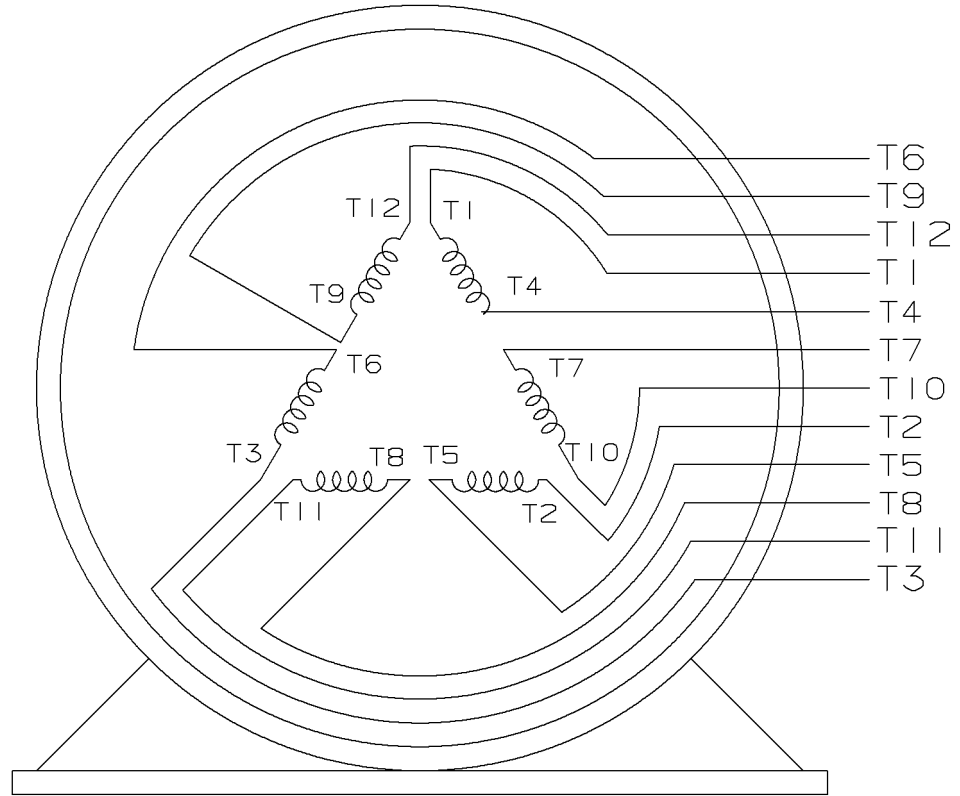
		TOLERANCES UNLESS SPECIFIED		Lincoln MOTOR		DRAWN TJB 08-07-2001	
		DEC.	INCHES			CHK	DRS 09-04-2001
		.X	±.1			APPD	HNH 09-04-2001
2	ADDED DASH 1548, REVISED PART NAME; U.E.I. WAS U.E. CN34267	.XX	±.03	TITLE OUTLINE NEMA MOTORS 360T FRAME OPD UEI		SCALE	1=5
1	NEW DRAWING MU37565	.XXX	±.005			REF	
NO.	REVISION	BY & DATE	CHK	ANG	FINISH	FMF	PREV
THIS DRAWING IN DESIGN AND DETAIL IS OUR PROPERTY AND MUST NOT BE USED EXCEPT IN CONNECTION WITH OUR WORK ALL RIGHTS OF DESIGN AND INVENTION ARE RESERVED THIS IS AN ELECTRONICALLY GENERATED DOCUMENT - DO NOT SCALE THIS PRINT		RFP 09-04-2001	±7'30"	CAD FILE xh2d1ss1		SIZE	DRAWING NO. PAGE 1 OF 1 REV.
		DIST BY				B	XH2D1SS1 2



LOW VOLTAGE



HIGH VOLTAGE



VIEW OF TERMINAL END

					✓ UNLESS OTHERWISE SPECIFIED DIMENSIONS ARE IN INCHES TOL. ON XX±.02 XXX±.005 XXXX±.0005 ANGLES± 7'30"				
2	08-09-1999	RE-ISSUE, ADDED '-' TO PART NUMBER	BLR		MAX. SURFACE ROUGHNESS UNLESS OTHERWISE NOTED		DRAWN BY TRB 07-16-1999		
1	06-18-1999	NEW DRAWING	TRB	FINISH		CHKD BY ML 06-18-1999			
				MATERIAL		APPD BY GK 06-18-1999			
REV	DATE	CHANGE	NAME	PART NAME 3 PHASE CONNECTION DIAGRAM 2/1 DELTA - 12 LEADS			DRWG NO A- EE7308AA-LN		

PURCHASED

CADD FILE NO.

EE7308AALN

ERROR: undefined
OFFENDING COMMAND: Pscrip

STACK:

Data Sheet

Date: 2/1/2018

LM28914



Data @ **460 V**

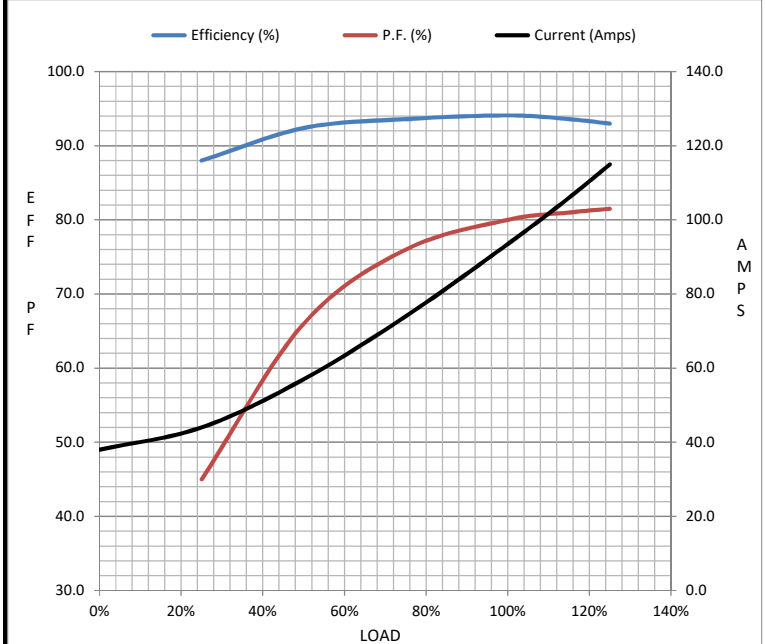
Motor Load Data

Load	0%	25%	50%	75%	100%	115%	125%	LR
Current (Amps)	38.0	44.0	57.0	74.0	93.5	106	115	542
Torque (ft-lb)	0.00	55.0	110	165	221	254	277	410
RPM	1800	1798	1795	1790	1785	1.782	1780	0
Efficiency (%)		88.0	92.4	93.6	94.1	93.6	93.0	
P.F. (%)	10.0	45.0	66.0	76.0	80.0	81.0	81.5	35.0

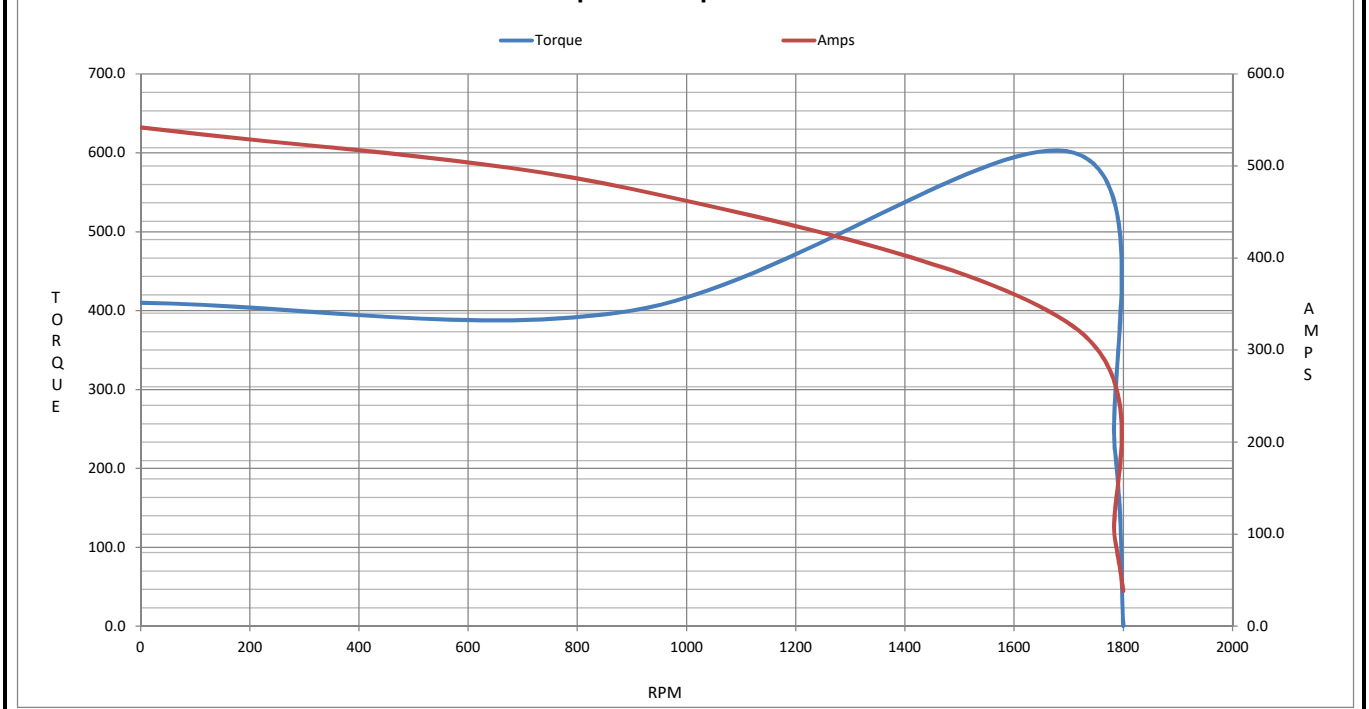
Motor Speed Data

	LR	Pull-Up	BD	Rated	Idle
Speed (RPM)	0	900	1710	1785	1800
Current (Amps)	542	475	325	93.5	38.0
Torque (ft-lb)	410	400	600	221	0.00

Information Block				
HP	75.0			
Sync. RPM	1800			
Frame	365			
Enclosure	DP			
Construction	TDR			
Voltage	230/460#230/460 V			
Frequency	60 Hz			
Design	B			
LR Code letter	G			
Service Factor	1.15			
Temp Rise @ FL	70 °C			
Duty	60 MIN			
Ambient	40 °C			
Elevation	1,000 feet			
Rotor/Shaft wk ²	0.00 Lb-Ft ²			
Ref Wdg	C3654001 R1			
Sound Pressure @ 1M	76 dBA			
VFD Rating	NONE			
Outline Dwg	XH2D1SS1-1648			
Conn. Diag	A-EE7308AA-LN			
Additional Specifications:				
0				
0				
EQUIV CKT (OHMS / PHASE)				
R1	R2	X1	X2	Xm
0.0650	0.0280	0.2500	0.3720	6.5270



Speed - Torque Curve



EC Declaration of Conformity

The undersigned representing
the manufacturer:

Regal Beloit America
100 East Randolph St.
Wausau, WI 54401

and the authorized representative
established within the Community:

Marathon Electric UK
6F Thistleton Road Ind. Estate
Market Overton
Oakham, Rutland LE15 7PP UK

are committed to providing customers with products that comply with applicable regulations and international protocols to which they are subject, including the requirements of the European Parliament Directive on the Harmonization of the laws relating to electrical equipment designed for use within certain voltage limits (2014/35/EU).

Regal Beloit America declares that the following product(s), to which this declaration relates, are in conformity with the relevant sections of the EC standards listed below.

This statement supersedes any statements previously issued pertaining to the product(s) listed below and is subject to change without notice.

Model No : LM28914

(Model No. may contain prefix and/or suffix characters)

Catalog No : LM28914

Rework No : N/A

Directives :

Low Voltage Directive 2014/35/EU

Harmonized Standards Used :

EN 60034-1: 2010 (IEC 60034-1: 2010)

EN 60034-5: 2001/A1:2007 (IEC 60034-5: 2000/A1:2006)

Authorized Representative:



Michael A. Logsdon
Vice President, Technology

Authorized Representative in the Community:



Julian Clark
Marketing Engineer

Created on 09/01/2022

CE 22