

PRODUCT INFORMATION PACKET



Model No: LM30093

Catalog No: LM30093

Elevator Duty Motor, 15 & 20 HP, 3 Ph, 60 & 60 Hz, 200 & 200 V, 3600 & 3600 RPM, 215T Frame, DP



Regal and Leeson are trademarks of Regal Rexnord Corporation or one of its affiliated companies.

©2023 Regal Rexnord Corporation, All Rights Reserved. MC017097E





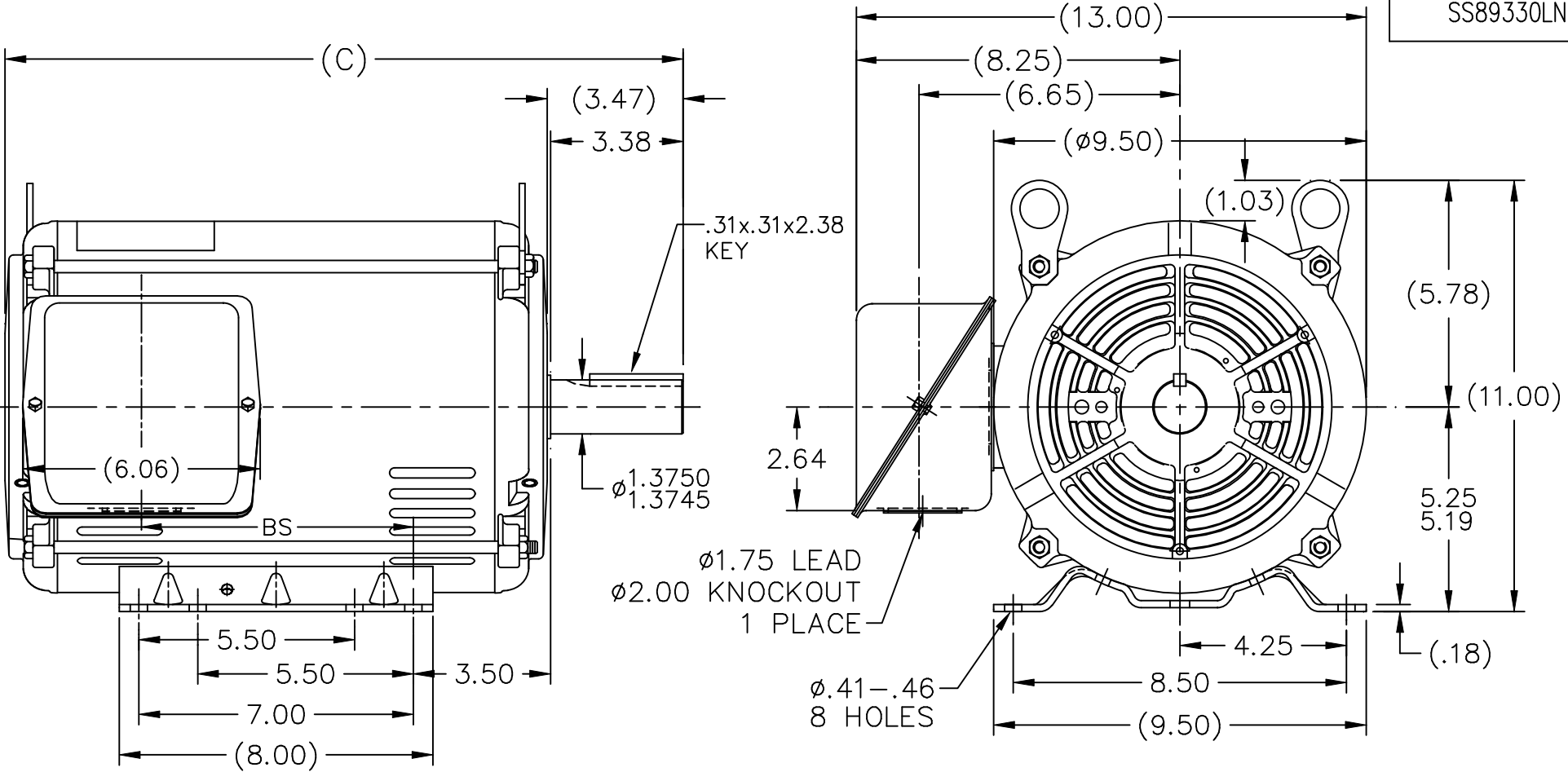
Nameplate Specifications

Phase	3	Output HP	15 & 20 Hp
Output KW	11.2 & 14.9 kW	Voltage	200 & 200 V
Speed	3510 & 3475 rpm	Service Factor	1.0 & 1.0
Frame	215T	Enclosure	Drip Proof
Thermal Protection	No Protection	Efficiency	90.2 & 88.5 %
Ambient Temperature	40 °C	Frequency	60 & 60 Hz
Current	39 & 53 A	Power Factor	91
Duty	120/80 Starts/Hour	Insulation Class	F
Design Code	INV	KVA Code	G
Drive End Bearing Size	6307	Opp Drive End Bearing Size	6206
UL	Recognized	CSA	Y
CE	Y	IP Code	22
Number of Speeds	1		

Technical Specifications

Electrical Type	Squirrel Cage Induction Run	Starting Method	Wye Start Delta Run
Poles	2	Rotation	Reversible
Resistance Main	0 Ohms	Mounting	Rigid Base
Motor Orientation	Horizontal	Drive End Bearing	Ball
Opp Drive End Bearing	Ball	Frame Material	Rolled Steel
Shaft Type	T	Overall Length	18.54 in
Frame Length	12.40 in	Shaft Diameter	1.375 in
Shaft Extension	3.38 in	Assembly/Box Mounting	F1 ONLY
Outline Drawing	SS89330LN-1240	Connection Drawing	EE7340

SS89330LN



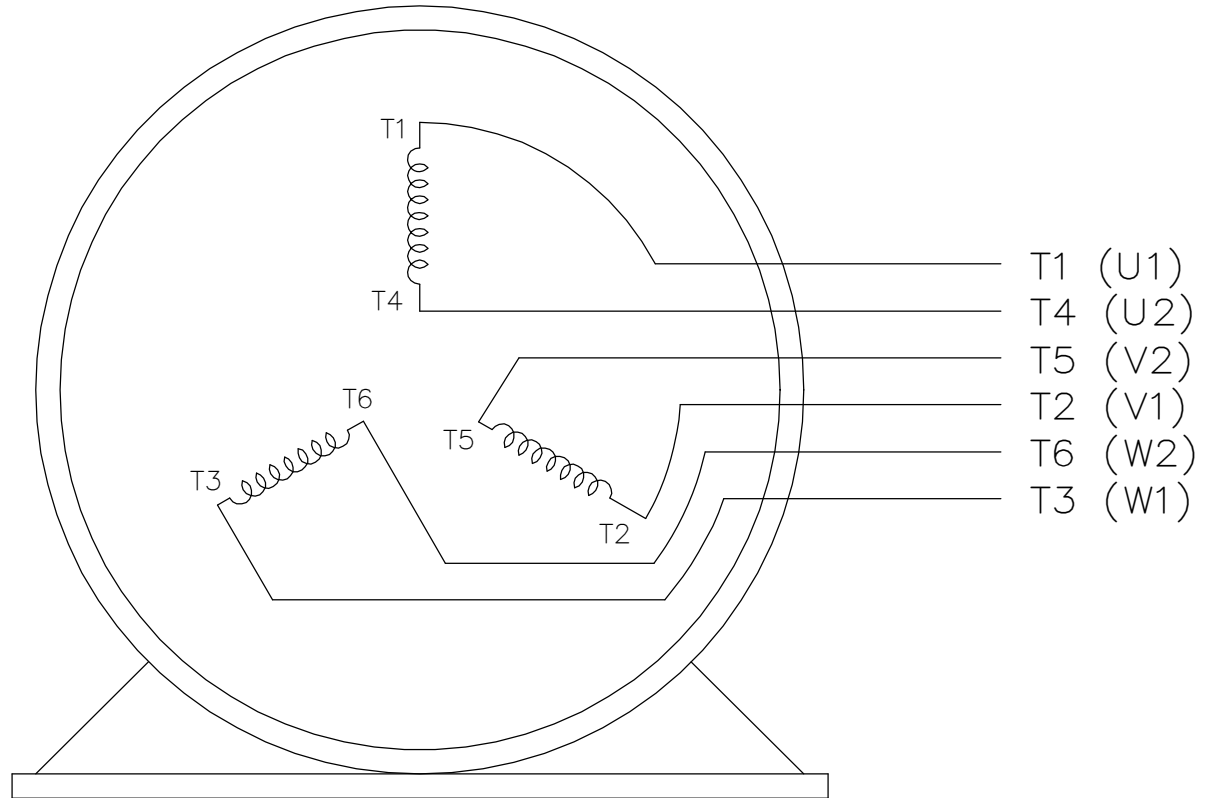
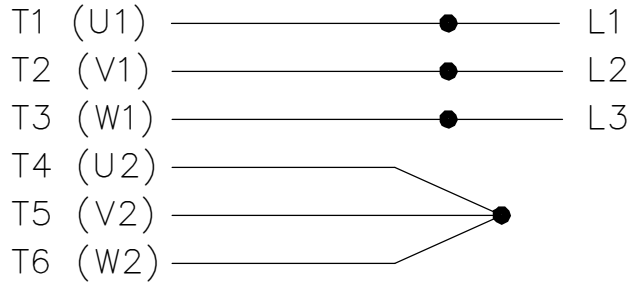
DASH	FR.	C	BS	MOUNTING
965	213T	15.79	5.43	
1115	213/15T	17.29	6.93	
1240	213/15T	18.54	8.18	F1 ONLY

- NOTES:
1. NAMEPLATE TO BE READ FROM C'BOX SIDE OF MOTOR.
 2. BOX CAN BE MOUNTED IN 90° STEPS.
 3. BOX WILL BE AT OPPOSITE SIDES IN F2 MOUNTING.
 4. BOX CAN BE MOUNTED ON OPPOSITE SIDE BY REMOVING BRACKETS AND TURNING FRAME 180°. (EXCEPT AS NOTED.)

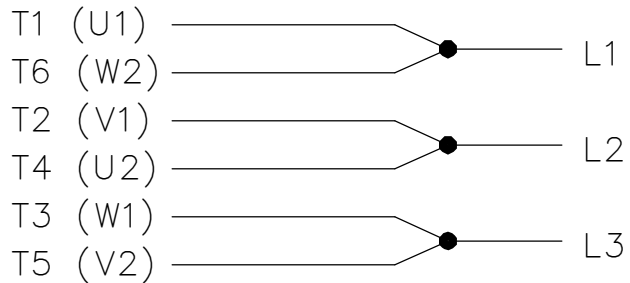
				TOLERANCES UNLESS SPECIFIED			DRAWN RJW 08-07-2006				
				DEC.	INCHES		CHK ML 08-07-2006				
				.X	±.1		APPD DR 08-08-2006				
				.XX	±.03		SCALE 1=4				
				.XXX	±.005		REF				
				.XXXX	±.0005	MAT'L.					
				ANG	±7'30"	FINISH					
NO.	REVISION			BY & DATE		PREV					
THIS DRAWING IN DESIGN AND DETAIL IS OUR PROPERTY AND MUST NOT BE USED EXCEPT IN CONNECTION WITH OUR WORK ALL RIGHTS OF DESIGN AND INVENTION ARE RESERVED THIS IS AN ELECTRONICALLY GENERATED DOCUMENT - DO NOT SCALE THIS PRINT				RFP	08-08-2006	CAD FILE	SS89330LN	SIZE	DRAWING NO.	PAGE 1 OF 1	REV.
				DIST	LB	A	SS89330LN				

THREE PHASE
WYE START DELTA RUN

START




RUN



VIEW OF TERMINAL END

NOTE:
IEC LEAD MARKINGS ARE NOTED
IN PARANTHESES

DRAWING REVISION F		REVISION BY RTT		REV DATE/© DATE 05-29-2019		TOLERANCES (EXCEPT AS NOTED):		DRAWN BY LZ		 Regal Beloit America, Inc.					
ECO ECO-0167538		APPROVED BY JWA		DATE 05-29-2019		DEC. .X ±0.1 [±3] .XX ±0.02 [±0.5] .XXX ±0.005 [±0.13] .XXXX ±0.0005 [±0.013]		DATE 01-06-1994							
ECO DESCRIPTION UPDATED TITLE BLOCK						REMOVE BURRS & BREAK SHARP EDGES: .003/.015 [.08/.38] X 45° CORNER FILLETS: R.02 [.5] MACHINED SURFACES: 200/ 5.1 INCH √ mm √		APPROVED BY GK		DESCRIPTION CONNECTION DIAGRAM 3<MOD-DIAM> - WYE START DELTA RUN					
COPYRIGHT (PER REVISION DATE) REGAL BELOIT AMERICA, INC. ALL RIGHTS RESERVED. PROPRIETARY AND CONFIDENTIAL INFORMATION - THIS DOCUMENT IS THE PROPERTY OF REGAL BELOIT AMERICA, INC. ("OWNER") AND CONTAINS OWNER'S PROPRIETARY INFORMATION. ANY PERSON, CORPORATION OR OTHER FIRM RECEIVING IT IS DEEMED, BY RECEIVING IT, TO AGREE THAT IT, AND/OR ANY PART OF IT, SHALL NOT BE DISCLOSED TO ANY PERSON, CORPORATION OR OTHER ENTITY, DUPLICATED, AND/OR USED, EXCEPT AS EXPRESSLY APPROVED IN WRITING IN ADVANCE BY OWNER. THIS DOCUMENT SHALL BE RETURNED TO OWNER UPON REQUEST. IT MAY BE SUBJECT TO CERTAIN RESTRICTIONS UNDER APPLICABLE EXPORT CONTROL LAWS AND REGULATIONS.						mm DIMENSIONS IN [BRACKETS] ARE FOR REFERENCE ONLY		DATE 01-18-1994				MATERIAL		PROCESS/FINISH	
														REFERENCE	

Data Sheet

Date: 1/30/2018

LM30093



Data @ **200 V**

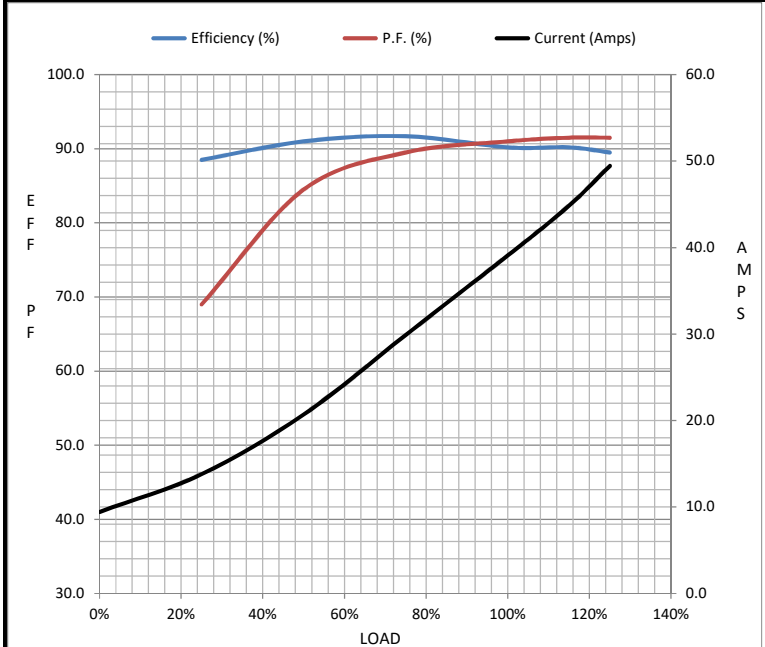
Motor Load Data

Load	0%	25%	50%	75%	100%	115%	125%	LR
Current (Amps)	9.4	13.8	20.7	29.9	39.1	44.9	49.5	267
Torque (ft-lb)	0.00	5.5	11.0	16.7	22.5	26.0	28.5	34.5
RPM	3600	3580	3560	3535	3510	3,495	3485	0
Efficiency (%)		88.5	91.0	91.7	90.2	90.2	89.5	
P.F. (%)	9.0	69.0	84.5	89.5	91.0	91.5	91.5	42.0

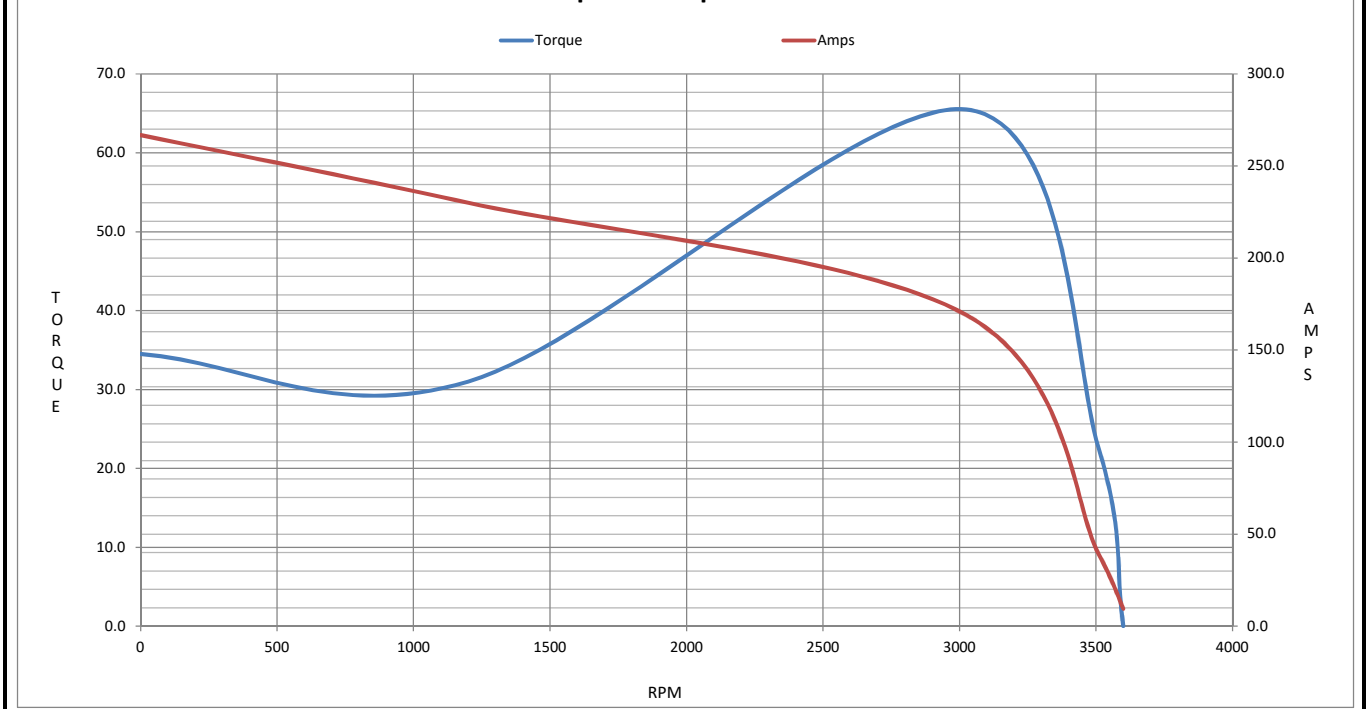
Motor Speed Data

	LR	Pull-Up	BD	Rated	Idle
Speed (RPM)	0	1200	3025	3510	3600
Current (Amps)	267	230	169	39.1	9.4
Torque (ft-lb)	34.5	31.0	65.5	22.5	0.00

Information Block				
HP	15.0			
Sync. RPM	3600			
Frame	215			
Enclosure	DP			
Construction	TDW			
Voltage	200#200 V			
Frequency	60 Hz			
Design	A			
LR Code letter	G			
Service Factor	1.15			
Temp Rise @ FL	35 °C			
Duty	60 MIN			
Ambient	40 °C			
Elevation	1,000 feet			
Rotor/Shaft wk ²	0.60 Lb-Ft ²			
Ref Wdg	K2152149 R5			
Sound Pressure @ 1M	75 dBA			
VFD Rating	NONE			
Outline Dwg	A-SS89330LN-1240			
Conn. Diag	A-EE7340-LN			
Additional Specifications:				
0				
0				
EQUIV CKT (OHMS / PHASE)				
R1	R2	X1	X2	Xm
0.0000	0.0000	0.0000	0.0000	0.0000



Speed - Torque Curve



EC Declaration of Conformity

The undersigned representing
the manufacturer:

Regal Beloit America
100 East Randolph St.
Wausau, WI 54401

and the authorized representative
established within the Community:

Marathon Electric UK
6F Thistleton Road Ind. Estate
Market Overton
Oakham, Rutland LE15 7PP UK

are committed to providing customers with products that comply with applicable regulations and international protocols to which they are subject, including the requirements of the European Parliament Directive on the Harmonization of the laws relating to electrical equipment designed for use within certain voltage limits (2014/35/EU).

Regal Beloit America declares that the following product(s), to which this declaration relates, are in conformity with the relevant sections of the EC standards listed below.

This statement supersedes any statements previously issued pertaining to the product(s) listed below and is subject to change without notice.

Model No : LM30093

(Model No. may contain prefix and/or suffix characters)

Catalog No : LM30093

Rework No : N/A

Directives :

Low Voltage Directive 2014/35/EU

Harmonized Standards Used :

EN 60034-1: 2010 (IEC 60034-1: 2010)

EN 60034-5: 2001/A1:2007 (IEC 60034-5: 2000/A1:2006)

Authorized Representative:



Michael A. Logsdon
Vice President, Technology

Authorized Representative in the Community:



Julian Clark
Marketing Engineer

Created on 09/01/2022

CE 22